

Product datasheet for **RC215616**

ZnT1 (SLC30A1) (NM_021194) Human Tagged ORF Clone

Product data:

Product Type:	Expression Plasmids
Product Name:	ZnT1 (SLC30A1) (NM_021194) Human Tagged ORF Clone
Tag:	Myc-DDK
Symbol:	ZnT1
Synonyms:	ZNT1; ZRC1
Mammalian Cell Selection:	Neomycin
Vector:	pCMV6-Entry (PS100001)
E. coli Selection:	Kanamycin (25 ug/mL)



[View online »](#)

ORF Nucleotide Sequence:

>RC215616 representing NM_021194
 Red=Cloning site Blue=ORF Green=Tags(s)

TTTTGTAATACGACTCACTATAGGGCGGCCGGGAATTCGTCGACTGGATCCGGTACCGAGGAGATCTGCC
 GCC**CGCATCGCC**

ATGGGGTGTGGGGTCGGAACCGGGCCGGCTGCTGTGCATGCTGGCGTGACCTTCATGTTTCATGGTGC
 TGGAGGTGGTGGTGGAGCCGGGTGACCTCGTCGCTGGCGATGCTCTCCGACTCCTTCCACATGCTGTGGGA
 CGTGCTGGCGCTGGTGGTGGCGCTGGTGGCCGAGCGCTTCGCCCGCGGACCCACGCCACCCAGAAGAAC
 ACGTTCGGCTGGATCCGAGCCGAGGTAATGGGGCTCTGGTGAACGCCATCTTCTGACTGGCCTCTGTT
 TCGCCATCTGCTGGAGGCCATCGAGCGCTTCATCGAGCCGACGAGATGCAGCAGCCGCTGGTGGTCTCT
 TGGGGTCGGCGTGGCCGGGCTGCTGGTCAACGTGCTGGGGCTCTGCCTCTCCACCATCACAGCGGCTTC
 AGCCAGGACTCCGGCCACGGCCACTCGCACGGGGTACGGCCACGGCCACGGCTCCCCAAGGGGCTC
 GCGTTAAGAGCACCCGCCCGGGAGCAGCGACATCAACGTGGCCCGGGGAGCAGGGTCCCAGCCAGGA
 GGAGACCAACACCCTGGTGGCCAATACCAGCAACTCCAACGGGCTGAAATTGGACCCCGAGACCCAGAA
 AACCCAGAAAGTGGTATACAGTGAAGTACAAGTGAATGAAATCTTGTGAGAGAACCTGACCATATGG
 AACTGGAAGAAGTAGGGCTGGCAACTTAACATGCGTGGAGTTTTTCTGCATGCTCTGGAGATGCCTT
 GGGTTCAGTGATTGTAGTAGTAAATGCCTTAGTCTTTACTTTTCTTGGAAAGGTTGTTCTGAAGGGGAT
 TTTTGTGTGAATCCATGTTTCCCTGACCCTGCAAAGCATTGTAGAAATAATTAATAGTACTCATGCAT
 CAGTTTATGAGGCTGGTCTTGTGGTGTCTATATTTAGATCCAACCTCTTGTGTGTAATGGTTTGTAT
 ACTTCTTTACACAACCTATCCATTACTTAAGGAATCTGCTCTTATTCTTCAAACTGTTCTTAAACAA
 ATTGATATCAGAAATTTGATAAAAAGAATTCGAAATGTTGAAGGAGTTGAGGAAGTTCATGAATTACATG
 TTTGGCAACTTGGTGAAGCAGAATCATTGCCACTGCTCACATAAAATGTGAAGATCCAACATCATACAT
 GGAGGTGGCTAAAACCATTAAAGACGTTTTTTCATAATCACGGAATTCACGCTACTACCATTACGCTGAA
 TTTGCTAGTGTAGGCTCTAAATCAAGTGTAGTCCGTGTGAACCTGCCTGCAGAACCCAGTGTGCTTTGA
 AGCAATGTTGTGGGACTACCACAAGCCCTTCTGAAAGGATGCAGAAAAGACCCAGCAGTTAGCAT
 TTCTTGTTTAGAACTTAGTAACAATCTAGAGAAGAAGCCAGGAGGACTAAAGCTGAAAACATCCCTGCT
 GTTGTGATAGAGATTA AAAACATGCCAAACAAACACCTGAATCATCTTTG

ACGCGTACGCGGCCGCTCGAGCAGAAACTCATCTCAGAAGAGGATCTGGCAGCAAATGATATCCTGGATT
 ACAAGGATGACGACGATAAGGTTTAA

Protein Sequence:

>RC215616 representing NM_021194
 Red=Cloning site Green=Tags(s)

MGCWGRNRGRLLCMLALTFMFMVLEVVVSRVTSSLAMLSDSFHMLSDVLALVVALVAERFARRTHATQKN
 TFGWIRAEVMGALVNAIFLTGLCFAILLEAIERFIEPHEMQQPLVVLGVVAGLLVNVLLGLCLFHHHSGF
 SQDSGHGSHGGHGHGHLPGKPRVKSTRPGSSDINVAPGEQGPQEETNTLVANTSNSNGLKLDPADPE
 NPRSGDTEVQVNGNLVREPDHMELEEDRAGQLNMRGVFLHVLGDALGSVIVVNVNLFYFSWKGCSEGD
 FCVNPCFPDPCKAFVEIINSTHASVYEAGPCWVLYLDPTLCVVMVCILLYTTPLLKESALILLQTPVKQ
 IDIRNLIKELRNVEGVVEVHELHVWQLAGSRIIATAHIKCEDPTSYMEVAKTIKDVFNHGIHATTIQPE
 FASVSGKSSVPCELACRTQCALKQCCGTLQPAPSGKDAEKTPAVSI SLEL SNNLEKKPRRTKAENIPA
 VVIEIKNMPNKQPESL

TRTRPLEQKLISEEDLAANDILDYKDDDDKV

Chromatograms:

https://cdn.origene.com/chromatograms/mk6670_g06.zip

Restriction Sites:

Sgfl-Mlul

Cloning Scheme:

ACCN: NM_021194

ORF Size: 1521 bp

OTI Disclaimer: The molecular sequence of this clone aligns with the gene accession number as a point of reference only. However, individual transcript sequences of the same gene can differ through naturally occurring variations (e.g. polymorphisms), each with its own valid existence. This clone is substantially in agreement with the reference, but a complete review of all prevailing variants is recommended prior to use. [More info](#)

OTI Annotation: This clone was engineered to express the complete ORF with an expression tag. Expression varies depending on the nature of the gene.

Components: The ORF clone is ion-exchange column purified and shipped in a 2D barcoded Matrix tube containing 10ug of transfection-ready, dried plasmid DNA (reconstitute with 100 ul of water).

Reconstitution Method:

1. Centrifuge at 5,000xg for 5min.
2. Carefully open the tube and add 100ul of sterile water to dissolve the DNA.
3. Close the tube and incubate for 10 minutes at room temperature.
4. Briefly vortex the tube and then do a quick spin (less than 5000xg) to concentrate the liquid at the bottom.
5. Store the suspended plasmid at -20°C. The DNA is stable for at least one year from date of shipping when stored at -20°C.

RefSeq: [NM_021194.3](#)
RefSeq Size: 2034 bp

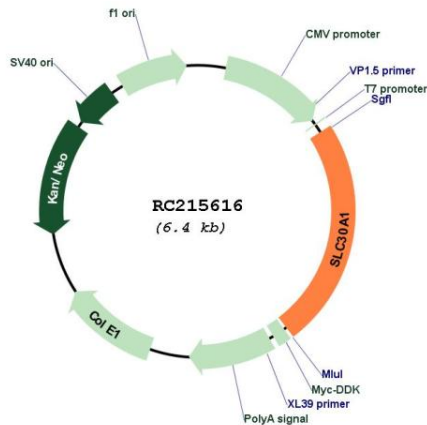
RefSeq ORF: 1524 bp

Locus ID: 7779

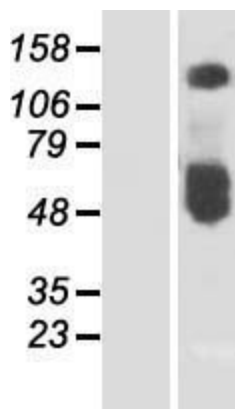
UniProt ID: [Q9Y6M5](#)
Cytogenetics: 1q32.3

Domains: Cation_efflux
 Protein Families: Transmembrane
 MW: 55.1 kDa
 Gene Summary: May be involved in zinc transport out of the cell.[UniProtKB/Swiss-Prot Function]

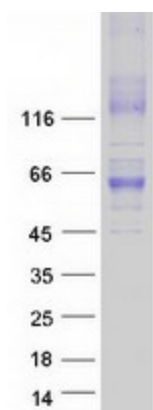
Product images:



Circular map for RC215616



Western blot validation of overexpression lysate (Cat# [LY412033]) using anti-DDK antibody (Cat# [TA50011-100]). Left: Cell lysates from untransfected HEK293T cells; Right: Cell lysates from HEK293T cells transfected with RC215616 using transfection reagent MegaTran 2.0 (Cat# [TT210002]).



Coomassie blue staining of purified SLC30A1 protein (Cat# [TP315616]). The protein was produced from HEK293T cells transfected with SLC30A1 cDNA clone (Cat# RC215616) using MegaTran 2.0 (Cat# [TT210002]).