

Product datasheet for **RC215612**

AMZ1 (NM_133463) Human Tagged ORF Clone

Product data:

Product Type:	Expression Plasmids
Product Name:	AMZ1 (NM_133463) Human Tagged ORF Clone
Tag:	Myc-DDK
Symbol:	AMZ1
Mammalian Cell Selection:	Neomycin
Vector:	pCMV6-Entry (PS100001)
E. coli Selection:	Kanamycin (25 ug/mL)



[View online »](#)

ORF Nucleotide Sequence:

>RC215612 representing NM_133463
 Red=Cloning site Blue=ORF Green=Tags(s)

TTTTGTAATACGACTCACTATAGGGCGGCCGGAATTCGTCGACTGGATCCGGTACCGAGGAGATCTGCC
 GCC**CGGATCGCC**

ATGCTGCAGTGTAGACCCGCACAGGAGTTCAGCTTCGGGCCCCGGCCTTGAAGGACGCTCTGGTCTCCA
 CTGACGCAGCCCTGCAGCAGCTGTATGTGCCCTTCTCCCCTGCCAGCGGCTTTCCTGGCCGAGGC
 CTAACAACCCGAGAGGAGCTTCTTGCACCCTGCTCATCCGCACGGGCTTCGACTGGCTCCTGAGCCGA
 CCCGAGGCTCCCGAGGACTTCCAGACCTTCCACGCCTCCCTGCAGCACCGGAAGCCCCGCCTGGCTCGGA
 AGCACATCTACCTACAGCCGATAGACCTGAGCGAGGAGCCGGTGGGAAGCTCCCTGCTGCACCAGCTGTG
 CAGCTGCACAGAGGCTTCTTCTGGGCTGCGCGTCAAGTGCCTGCCGTCGGTGGCAGCCCGCTCCATC
 CGCTGCTCCTCGCGGCCAGCCGGGACTCTGACAGGCTCCAGCTCCACACAGACGGCATCTGTCTTCT
 TGAAGAACAACAAGCCAGGGGACGCGCTGTGTGTCTGGGCTCACACTGTCTGACTGTACCCCATGA
 GGCTGGAGCTTACCTTACGCAAGTCTTCCAGGGCACGAAGTGGGCTCTGCAGCTTCCGCCGTTT
 TCAGGGGAATTCGGAAGTCGGGGCCCAGCGCCCTGATCTGGCCCTGGTAGAGGAGCAGCAGACGGCC
 CCGAGGCCCCCTGCAGGACAGGGGCTGGGCCCTGTGCTTCAGTGCCTGGGGATGGTTCAGTGTGCAA
 GGTACGTGCCACGAGCTCTGCCACCTTCTGGGCTGGGAACTGCCGCTGGCTCCGCTGCCTATGCAG
 GGTGCGCTCAGCTGGACGAGGCCCTGCGGCGGCCCTGGACCTGTGCCATCTGCCTGAGGAAGCTGC
 AGCATGTCTGGGTTTACGGCTCATCGAGAGGTACCAGAGACTCTACACCTGGACTCAGGCGGTGGTGGG
 GACGTGGCCAGCCAGGAGGCGGGGAGCCGTAGTGTGGGAGGACACCCGCTGCCAGCGCCGACTCG
 GGCATGTCTGTGAGAGTACTCGGAGCCCGGCACCAAGTGTGTGGAGCCCTCACCCCTGATGCCGGGA
 GTCACACCTTCGCTCAGGGCCAGAGGAAGGGCTGAGTACCTGGCAGCCTCAGAGGCTCCGCTGCCACC
 TGGGGCCCTGCGGAGGCCATCAAGGAGCATGAACGGTGGCTGGCCATGTGCATCCAGGCCCTGCAGCGG
 GAAGTGGCAGAGGAGCCTGGTGCAGGTGGACAGAGCCGTGGACGCCCTCGACCCTGGGAGATGTTCA
 CGGGCCAGCTCCCGGCCACCAGGACAGCCACCAGCAGCAGGGACAGCGTGGGCTGCGCAAGGTGCT
 GGGGGACAAGTTCTCCTCCTGAGGAGGAAGCTGAGTGCCGAAAACCTGCCAGAGCAGAGTCGGCCCCC
 CGTCCCTGGGATGGGGAAGAGAGT

ACGCGTACGCGGCCGCTCGAGCAGAAACTCATCTCAGAAGAGGATCTGGCAGCAAATGATATCTGGATT
 ACAAGGATGACGACGATAAGGTTTAA

Protein Sequence:

>RC215612 representing NM_133463
 Red=Cloning site Green=Tags(s)

MLQCRPAQEF SFGPRALKDALVSTDAALQQLYVSASFSPAERLFLAEAYNPQRTL FCTLLIRTGFDWLLSR
 PEAPEDFQTFHASLQHRKPRLARKHIYLPIDLSEEPVGSLLHLQCSCTEAFLLGLRVKCLPSVAAASI
 RCSSRPSRDSRLQLHTDGILSFLKNNKPGDALCVLGLTLDL YPHEAWSFTFSKFLPGHEVGVCSFARF
 SGEFPKSGPSAPDLALVEAAADGPEAPLQDRGWALCF SALGMVQCCKVTCHLCHLLGLGNCRWLRLMQ
 GALSLDEALRRPLDLCPICLRKLQHVLFRLIERYQRLYTWTQAVVGTWPSQEAGEPSVWEDTPPASADS
 GMCCESDSEPGTSVSEPLTPDAGSHTFASGP EEGLSYLAASEAPLPPGGPAEAIKEHERWLAMCIQALQR
 EVAEEDLVQVDRAVDALDRWEMFTGQLPATRQDPPSSRDSVGLRKLKVLGDKFSSLRRLKSARKLARAESAP
 RPWDGEES

TRTRPLEQKLI SEEDLAANDILDYKDDDDKV

Chromatograms:

https://cdn.origene.com/chromatograms/mg3958_g01.zip

Restriction Sites:

Sgfl-MluI

Cloning Scheme:


ACCN: NM_133463

ORF Size: 1494 bp

OTI Disclaimer: The molecular sequence of this clone aligns with the gene accession number as a point of reference only. However, individual transcript sequences of the same gene can differ through naturally occurring variations (e.g. polymorphisms), each with its own valid existence. This clone is substantially in agreement with the reference, but a complete review of all prevailing variants is recommended prior to use. [More info](#)

OTI Annotation: This clone was engineered to express the complete ORF with an expression tag. Expression varies depending on the nature of the gene.

Components: The ORF clone is ion-exchange column purified and shipped in a 2D barcoded Matrix tube containing 10ug of transfection-ready, dried plasmid DNA (reconstitute with 100 ul of water).

Reconstitution Method:

1. Centrifuge at 5,000xg for 5min.
2. Carefully open the tube and add 100ul of sterile water to dissolve the DNA.
3. Close the tube and incubate for 10 minutes at room temperature.
4. Briefly vortex the tube and then do a quick spin (less than 5000xg) to concentrate the liquid at the bottom.
5. Store the suspended plasmid at -20°C. The DNA is stable for at least one year from date of shipping when stored at -20°C.

RefSeq: [NM_133463.1](#), [NP_597720.1](#)

RefSeq Size: 4415 bp

RefSeq ORF: 1497 bp

Locus ID: 155185

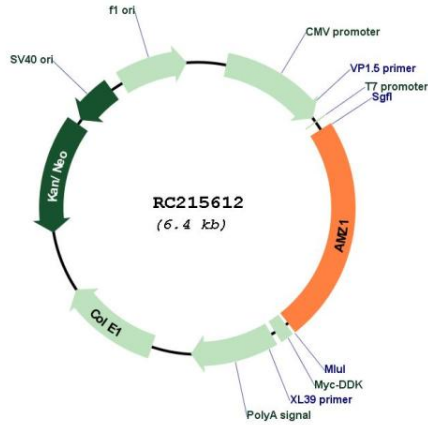
UniProt ID: [Q400G9](#)

Cytogenetics: 7p22.3

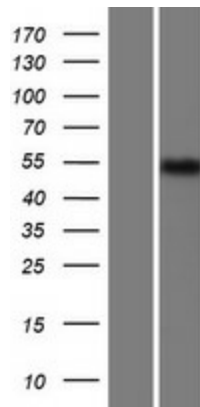
MW: 54.7 kDa

Gene Summary: Zinc metalloprotease. Exhibits aminopeptidase activity against neurogranin in vitro. Does not hydrolyze angiotensin-2.[UniProtKB/Swiss-Prot Function]

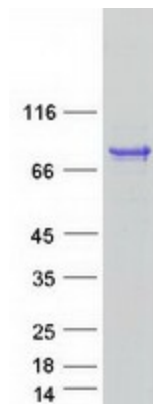
Product images:



Circular map for RC215612



Western blot validation of overexpression lysate (Cat# [LY408800]) using anti-DDK antibody (Cat# [TA50011-100]). Left: Cell lysates from untransfected HEK293T cells; Right: Cell lysates from HEK293T cells transfected with RC215612 using transfection reagent MegaTran 2.0 (Cat# [TT210002]).



Coomassie blue staining of purified AMZ1 protein (Cat# [TP315612]). The protein was produced from HEK293T cells transfected with AMZ1 cDNA clone (Cat# RC215612) using MegaTran 2.0 (Cat# [TT210002]).