

Product datasheet for **RC215611**

VPS26 (VPS26A) (NM_001035260) Human Tagged ORF Clone

Product data:

Product Type:	Expression Plasmids
Product Name:	VPS26 (VPS26A) (NM_001035260) Human Tagged ORF Clone
Tag:	Myc-DDK
Symbol:	VPS26
Synonyms:	HB58; Hbeta58; PEP8A; VPS26
Mammalian Cell Selection:	Neomycin
Vector:	pCMV6-Entry (PS100001)
E. coli Selection:	Kanamycin (25 ug/mL)
ORF Nucleotide Sequence:	>RC215611 representing NM_001035260 Red=Cloning site Blue=ORF Green=Tags(s)

TTTTGTAATACGACTCACTATAGGGCGGCCGGAATTCGTCGACTGGATCCGGTACCGAGGAGATCTGCCGCC**CGATCGCC**

ATGAGTTTTCTTGGAGGCTTTTTGGTCCAATTTGTGAGATCGATATTGTTCTTAATGATGGGAAACCA
GGAAAATGGCAGAAATGAAAAGTGAAGATGGCAAAGTAGAAAAACTATCTCTTCTATGACGGAGAATC
CGTTTCAGGAAAGGTAACCTAGCCTTTAAGCAACCTGGAAGAGGCTAGAACACCAAGGAATTAGAATT
GAATTTGTAGTCAAATGAACTTTTCAATGACAAGAGTAATACTCATGAATTTGTAACCTAGTGAAG
AACTAGCCTTACCTGGAGAACTGACTCAGAGCAGAAGTTATGATTTTGAATTTATGCAAGTTGAAAAGCC
ATATGAATCTTACATCGGTGCCAATGTCCGCTTGAGGTATTTTCTTAAAGTGACAATAGTGAGAAGACTG
ACAGATTTGGTAAAAGAGTATGATCTTATTGTTACCAGCTTGCCACCTATCCTGATGTTAACTCTA
TTAAGATGGAAGTGGCATTGAAGATTGTCTACATATAGAATTTGAATATAATAAATCAAAGTATCATT
AAAGGATGTGATTGTTGGAAAAATTTACTTCTTATTAGTAAGAATAAAAAACAACATATGGAGTTACAG
CTGATCAAAAAGAGATCACAGGAATTGGACCCAGTACCACAACAGAAACAGAAACAATCGCCAAATATG
AAATAATGGATGGTGCACCAGTAAAAGGAGATAATTTTATGGAGAAAAGCTCC

ACGCGTACGCGGCCGCTCGAGCAGAACTCATCTCAGAAGAGGATCTGGCAGCAAATGATATCCTGGATT
ACAAGGATGACGACGATAAGGTTTAA



[View online »](#)

Protein Sequence: >RC215611 representing NM_001035260
Red=Cloning site Green=Tags(s)

MSFLGGFFGPICEIDIVLNDGETRKAEMKTEDGKVEKHLYFYDGESVSGKVNLAFAKQPGKRLEHQGIRI
 EFVQGIELFNDKSNTHFVNLVKELALPGELTQSRSYDFEFMQVEKPYESYIGANVRLRYFLKVTIVRRL
 TDLVKEYDLIVHQLATYPDVNNSIKMEVGIEDCLHIEFEYNKSKYHLKDVIVGKIYFLLVRIKIQHMLQ
 LIKKEITGIGPSTTTTETETIAKYEIMDGAPVKGDNFMKSS

TRTRPLEQKLISEEDLAANDILDYKDDDDKV

Chromatograms: https://cdn.origene.com/chromatograms/ja1529_a10.zip

Restriction Sites: SgfI-MluI

Cloning Scheme:

Cloning sites used for ORF Shuttling:



* The last codon before the Stop codon of the ORF

ACCN: NM_001035260

ORF Size: 753 bp

OTI Disclaimer: The molecular sequence of this clone aligns with the gene accession number as a point of reference only. However, individual transcript sequences of the same gene can differ through naturally occurring variations (e.g. polymorphisms), each with its own valid existence. This clone is substantially in agreement with the reference, but a complete review of all prevailing variants is recommended prior to use. [More info](#)

OTI Annotation: This clone was engineered to express the complete ORF with an expression tag. Expression varies depending on the nature of the gene.

Components: The ORF clone is ion-exchange column purified and shipped in a 2D barcoded Matrix tube containing 10ug of transfection-ready, dried plasmid DNA (reconstitute with 100 ul of water).

Reconstitution Method:

1. Centrifuge at 5,000xg for 5min.
2. Carefully open the tube and add 100ul of sterile water to dissolve the DNA.
3. Close the tube and incubate for 10 minutes at room temperature.
4. Briefly vortex the tube and then do a quick spin (less than 5000xg) to concentrate the liquid at the bottom.
5. Store the suspended plasmid at -20°C. The DNA is stable for at least one year from date of shipping when stored at -20°C.

RefSeq: [NM_001035260.2](#), [NP_001030337.1](#)

RefSeq Size: 2564 bp

RefSeq ORF: 756 bp

Locus ID: 9559

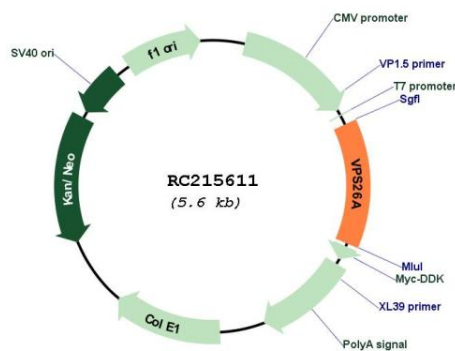
UniProt ID: [O75436](#)

Cytogenetics: 10q22.1

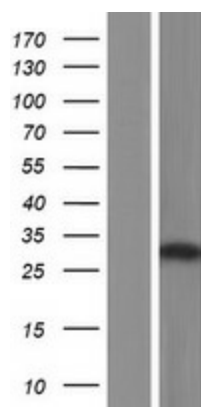
MW: 28.8 kDa

Gene Summary: This gene belongs to a group of vacuolar protein sorting (VPS) genes. The encoded protein is a component of a large multimeric complex, termed the retromer complex, involved in retrograde transport of proteins from endosomes to the trans-Golgi network. The close structural similarity between the yeast and human proteins that make up this complex suggests a similarity in function. Expression studies in yeast and mammalian cells indicate that this protein interacts directly with VPS35, which serves as the core of the retromer complex. Alternative splicing results in multiple transcript variants encoding different isoforms. [provided by RefSeq, Jul 2008]

Product images:



Circular map for RC215611



Western blot validation of overexpression lysate (Cat# [LY422131]) using anti-DDK antibody (Cat# [TA50011-100]). Left: Cell lysates from untransfected HEK293T cells; Right: Cell lysates from HEK293T cells transfected with RC215611 using transfection reagent MegaTran 2.0 (Cat# [TT210002]).