

Product datasheet for RC215610

RUSC2 (NM_014806) Human Tagged ORF Clone

Product data:

Product Type:	Expression Plasmids
Product Name:	RUSC2 (NM_014806) Human Tagged ORF Clone
Tag:	Myc-DDK
Symbol:	RUSC2
Synonyms:	Iporin; MRT61
Mammalian Cell Selection:	Neomycin
Vector:	pCMV6-Entry (PS100001)
E. coli Selection:	Kanamycin (25 ug/mL)
ORF Nucleotide Sequence:	>RC215610 representing NM_014806 Red=Cloning site Blue=ORF Green=Tags(s)

TTTTGTAATACGACTCACTATAGGGCGGCCGGAATTCGTCGACTGGATCCGGTACCGAGGAGATCTGCC
GCC**CGATCGCC**

ATGGATAGTCCCCAAAGCTGACTGGAGAGACCCTCATCGTTCATCACATCCCCCTGGTGCCTGCCAAG
TCCAGACAGGCAGTGTGTGGAGGGCAGGTGGAGGTGGTGGGAGCACAAAGACCTAATCCCTTCTGCC
ACCTGAGCTGGGCATACCCAGCCGATCAAGACCTAGGACAAGCTGACTCCCTGCTATTCAGCAGCCTG
CACTCTGTCCAGGAGAACTGCACGGTCTATAGACAGCACCAAGAGTAGGAGTCGGGATGGAAGAGGCC
CTGGAGCCCCAAACGACACAACCCCTTCTTGCTGCAGGAGGGTGTGGGTGAGCCAGGACTTGGTGA
GTATGATGACAGCATTGGTGACAGTGCCACCCAGCAGTCCCTCCACCTGCATGGCACTGGCCAGCCAA
TTTCATCTATCCTCTTTCCAGCTGCCACCATCTGGCCCCAGAGTGGCAGGCCATGGGGGACAACACGCA
GTCCGGCTGGAGTGGTGGAAAGGGCAGGAACAGGAGCCAGTGATGACCTTGGATACTCAGCAGTGCCG
CAGCCACTGTGCCGGCCAGAGCTGGAAGCAGAGACTATGGAGCTGGATGAGTGTGGGGACCTGGTGGG
AGTGGCAGTGGGGTGGAGCCAGCGATACCTCTGGCTTTCTTTGACCAGGAATGGAAGCTCAGTTCAG
ATGAATCCCCAAGGAACCTGGATGCTCCGGCTCAGGGGACCAGCACTGCCGCTGCAGTAGCACATCCAG
TCAGTCCGAGGCAGCTGACCAGTCCATGGGCTATGTGAGCGACTCCTCCTGCAACAGTTCAGATGGTGTG
CTGGTCACCTTCAGCACCTCTACAACAAGATGCATGGCACCCCGTGCCAATCTCAACTGCCCCAC
AGTCTGCAGCGACTTTCCTTCTGCAGCCACTCAGACCCTGGCGCTTCTATCTGGATCTGCAGCCCTC
CCCATTGAGTCTAAGATGTCTTATGAGTCCCATCACCCCTGAAAGTGGAGGAAGGAAGGGGCTATGGT
TGCCCTCATGCCTCTTCTCCTGAGCTTGTGCCAACTGCAACTCTACCGCCACACTGTGAGCCGTGCC
CAGCAGTGGCTGACCTCACAGCTGCTTCCAAAGCCAGGCCGCTTGTGTGGCCACACAAAATACTA
TAAACTTGTACCTGTGACCTATCTTCCCAATCATCCCCAAGCCCTGCTGGCTCTTCCATCACTAGCTGC
TCTGAGGAACACACCAAGATAAGTCCCCACCAGGCCCTGGCCAGACCCAGGCCCCAGCCAGCCCTCTG
AGTATTACCTATCCAGAAGCCAGAAGTCCAGCCAGGGAACAAGAAGCAGTGAGTTCCTCCACCCAAGC
AGCAGCTGCTGTGGGCCCACTGTGCTTGGAGGACAAGTATACGAATACTTACCCCCAACCTCAGC



[View online >](#)

ACTGGACGTCAGCGCTCCCGCAGCTATGATCGCAGCCTGCAGCGCAGCCCTCCTGTCCGCTGGGCTCGC
TGAACGTATGTTGAGTTGCCAGTGCCTTGAGTGAGGGCCCTGCAGCCATGGCCGGGCTGGCTCCCC
ACCCAGGAGGGTACCTCCTTTGCCGAGCTGGCCAAGGGCCGGAAGAAAAGTGGAGGCTCTGGCTCGCC
CCACTTCGTGTGAGTGTGGGGACTCCTCCAGGAGTTCTACCCATCCAAGAAGCCAGCAAGATCGGG
GGGCCCCACTGGATGAGGGCACTTGCTGTAGCCATAGCCTGCCACCCATGCCTTTGGGGCCAGGCATGGA
CCTACTGGCCCCAGACCAAGTCCACCTGGTCCACCCAGGTCTGTCAGGGACCCCACTCCAGTGAGAT
CCTCCTGTGGCCTCAGAGCTACTGGGCAAGCCCCCTGGCTCAGCTGATGGATCCAGGGCTGCTCTCC
CAGGGAGCCAGCCAACAGCCATACCCAGAGGGATGCAAGAGCTAGAGCTGACGGGGTGGCACCAGAG
CCGACCAGTCCTTCGCTACAGCAAGGAACAGAGGCCAACCACTGCCATCCAGCCCTTCGTGTTCCAG
CACCATTCCCCAAGCAGCTGGCCAAGGCCGGGCCCTCCACAGCCTTTCCAGCTCTACAGCCTCTCAG
GCTGCAGCGTACACAGCAGCCTGCCCCACTGGCTGCCCTGCTGCTCAAGTCTCAGTCCAGCTCCCTC
AGGGGAACCGCAGGCATCCACTCCCGAGCCACTGGCAGAGGTGCCAGGAAAGCTGGGTCTGAGCCAGAG
ACCTCTCGGCCATCGCCCTGGGCACTACTCCCCATCCGGAGTGTGGCCCTTTGGGCCAGCACTG
ACTTCTGCCTCACTTCGTGCTCCCCTCCCCAGAGCAGCCACAGCCACAGAAAGCTGCCCCATG
GAGCCACTCCTGTCTTCTGCTGTCGGCTGCCACCTCCAGCAGCCGAGAAGGAGGATCAGAAGATA
CTGACCTTGACTGAGTACCGGCTCCATGGAACAGGAAGCTTGCCGCTCTGGGCTCCTGGCGATCTGGCC
TCAGCCGAGCAGAGAGCCTGGCCCGGGAGGTGGTGAGGGCAGCATGGCCACCAGGCCAGTAATGCCAA
CCACCTATCCCCTCAAGCCCTCAAGTGGCGGGAATACAGGAGGAAGAACCCTAGGGCCACCTGGTTTG
TCAGGGAGCCTAGACCGAAGATCACAAGAAGCTCGGCTGGCCCGAAGAAACCCTATCTTTGAGTTCCTG
GCTCCCTCAGTGTGCCAGCCATCTGAAGTCCGGCTGAATGGCCAAGCAGTGAAGCCGTTACCACTGAC
CTGCCCTGACTTCCAGGACCCCTTTCTTGACGGAGAAGCCTCCAGTGAAGTGTGCTGCTCCAGAT
GGCAGCTCAGAGGCCATTTCCATTGACCTGCTTCAGAAAAAGGGCTGGTAAAAGCTGTTAACATCGCTG
TGGACCTATTGTGGCTATTTTGGCAAGCCGGGATCCCGGGTGAAGGCAAGCTGGAAACAGTTC
TGTGAGCCCAATGTGGGCCACCTGGTTCTGAAGTACTTGTGCCCTGCCGTCGGCCGCTGCTGGAGGAT
GGGCTCAAGCCCTTTGACTGGACGTCATCATCGGGCAGCGTAAGAATGCCATGGAGTGTGGTTGAGG
CTTCCACACAGCTAGGCCATCCACCAAGTCTGCATGGCCTCTACAACAAAGTCAAGCAATTCACAGA
GCTCACCAGTCATACCATGCGCTTCAACGCCTTCACTCGGCCTGCTCAACATCCGGTCCCTGGAGTTC
TGGTTTAAACACCTCTATAACCACGAAGACATCATCCAGACCCACTACCAGCCCTGGGGTTCCTGAGTG
CAGCTCATAACCGTGTGCCGGCCTTTGAAGAGCTGCTGCTGCTACAGCCCTGGCCCTGCTGCC
CTTCAGCCTCGACTTGTGTTCCAGCACCAGGCTGCTGCAAGTGGGCAGCAGCAGCGGCAGCACAAGGAA
CTGCTGCGGGTGTCCAGGACCTGCTGCTGCTGCCACTCCACGCTGCAGCTGGCCCGGGCCGGGGCC
AGGAGGGCCCTGGAGACGTGGACAGGGCAGCCAAAGGGGAGCGGGTGAAGGGTGTGGGTGCCTCAGAAGG
TGGAGAAGAGGAAGGAAGAAGAGGAGACAGAAGAGGTGGCAGAGGCAGCCGGGGGCTCAGGGCGTGCC
AGGTGGGCCCAGGTGGGCAGGCCGGCTGGTGGTACCAGCTCATGCAGAGCTCCAGGTCTACATCGATG
GCTCCATTGAGGGTTCAGGTTCCCTCGTGGTAGCAGCAACAGCAGCAGCGAGAAAAAGAAAGGGGAGG
AGGTGGGGGACCTCCCAGGCTCCACCACCCCGAGAGGGAGTAGTGGAGGGGGCTGAGGCCTGCCCTGCC
TCTGAGGAGGCCCTGGGCCGGAAAGGGGCTGGCCCTTCTGGATGGGAGCCCCCTGACTCTGTGCTGG
CCGAGCTGAGGGCAGTCCGGAGAGGGAAGGGCCCGCTGCCTCGCAGCAGAAAAAGAGGAGGGCCCTC
AGGCCTTACCTGGAGGCATCAAGTGGGGACACCTTTTGGCTCCCGAAAAGCCAGCGGAGGGCCCGG
CCACAAAATAGGCTCCCCCGACTGGCTGAGCCTGGACAAGTCCATGTTCCAAGTGGCGCAGACAG
TGGGTTCCCGCCGGGAGCCAGAGCCAAAGGAGAGCCTGCAGGAGCCACTCCCCAGCCCTGCCCTCCAG
TCCTCCGTGTGAGGTGCAGGCACTGTGCCACCCTGGCCACCGGCCCTGGACAGCTGAGCTTCCACAAA
GGAGACATCCTACGAGTGTGGGGCAGCTGGAGGAGACTGGCTGCGCTGCAGCCGTGGCCCGACTCTG
GCCTGGTGCCCTGGCTACGTGACATTGACCCCAACTCCAAGTCCAACCCTGGAAGCAGCCAAAAAC

ACGCGTACGCGGCCGCTCGAGCAGAAACTCATCTCAGAAGAGGATCTGGCAGCAATGATATCCTGGATT
ACAAGGATGACGACGATAAGGTTTAA

Protein Sequence: >RC215610 representing NM_014806
 Red=Cloning site Green=Tags(s)

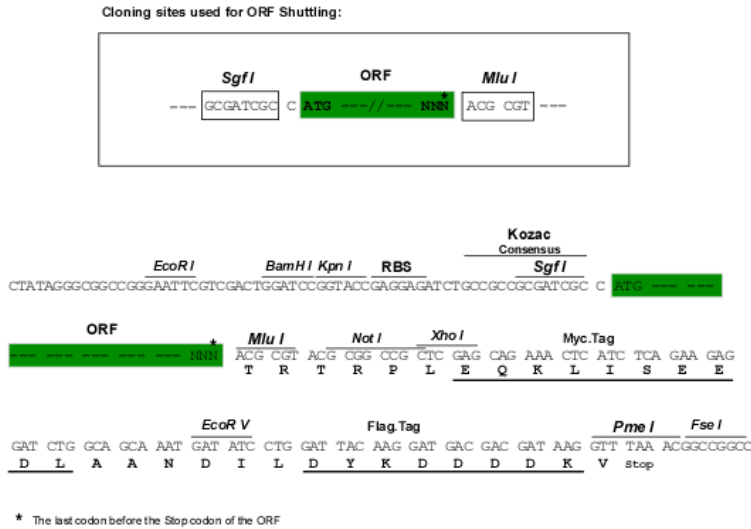
MDSPPKL TGETLIVHHIPLVHCQVPDRQCCGAGGGGGSTRPNPFCPELGITQPDQDLGQADSLFSSL
 HSAPGGTARSIDSTKSRSDRGRPGAPKRHNPFLLQEVGEPGLGDLYDDSI GDSATQQSFHLHGTGQPN
 FHLSSFQLPPSGPRVGRPWGTTTRSRAGVVEGEQEPVMTLDTQQCGTSHCCRPELEAETMELDECGGPGG
 SGGGGASDTSGFSFDQEWKLSSESPRNP GCSGSDQHCRCSSTSSQSEAADQSMGYVSDSCNSSDGV
 LVTFSTLYNKMHGTPRANLNSAPQSCSDSSFCSHSDPGAFYLDLQPSPFESKMSYESHHPESSGGREGGYG
 CPHASSPELDANCNSYRPHCEPCPAVADLTACFQSQARLVVATQNYKLVTCDLSSQSSPSPAGSSITSC
 SEEHTKISPPPGPDPGPSQPSEYYLFQKPEVQPEEQEAVSSSTQAAAAVGPTVLEGEVYVNTSPPNLS
 TGRQRSRSYDRSLQRSPVRLGSLERMLSCPVRLSEGPAAMAGPSPRRVTSFAELAKGRKKTGGSGSP
 PLRVSVGDSSQEFSPIQEAQQDRGAPLDEGTCCSHSLPPMPLGPGMDLLGPDSPPWSTQVCQGPSSSEM
 PPAGLRATGQGPLAQLMDPGPALPGSPANSHTQRDARARADGGGTE SRPVLRYSKERPTLPIQPFVFQ
 HFFPKQLAKARALHLSQLYSLSGCSRTQQAPLAAPAAQVSVAPSGEPQASTPRATGRGARKAGSEPE
 TSRPSPLGSYSPIRSVGPFPGPSTDSSASTSCSPPEQPTATESLPPWVSHSCPSAVRPATSQQPQKEDQKI
 LTLTEYRLHGTGSLPPLGSWRSGLSRAESLARGGEGSMATRPSNANHLSPQALKWREYRRKNPLGPPGL
 SGLDRRSQEARLARRNPIFEFPGSLSAASHLNCRLNGQAVKPLPLTCPDFQDPFSLTEKPPAEFCLSPD
 GSSEAISIDLLQKKGLVKAVNIAVDLIVAHFGTSRDPGVKAKLGNSSVSPNVGHLVLYKLCPAVRVLED
 GLKAFVLDVIGQRKNMPWSVVEASTQLGPSTKVLHGLYNKVSQFPELTSHTMRFNALGLLNIRSLF
 WFNHLYNHEDI IQTHYQWGFLSAHTVCPGLFEELLLLLLQPLALLPFLDLLFQHRLLSGQQQRQHK
 LLRVSQDLLLLSAHSTLQLARARGQEGPDVDRAAQGERVKGVGASEGEEEEEEEEETEEVAEAGGSGRA
 RWARGGQAGWYQLMQSSQVYIDGSI EGSRFPRGSSNSNSEKKKGAGGGGPPQAPPPREGVVEGAACPA
 SEEALGRERGWPFWMGSPD SVLAELRRSREGEPAASPAENE EGASEPSPGGIKWHLFGSRKAQREAR
 PTNRLPSDWLSLDKSMFQLVAQT VGSRRPEPEKESLQEPHSPALPSSPPCEVQALCHHLATGPGQLSFHK
 GDILRVLGRAGDWLRC SRGPD SGLVPLAYVTLTPTSPPTGSSQN

TRTRPLEQKLISEEDLAANDILDYKDDDDKV

Chromatograms: https://cdn.origene.com/chromatograms/mk8028_e07.zip

Restriction Sites: SgfI-MluI

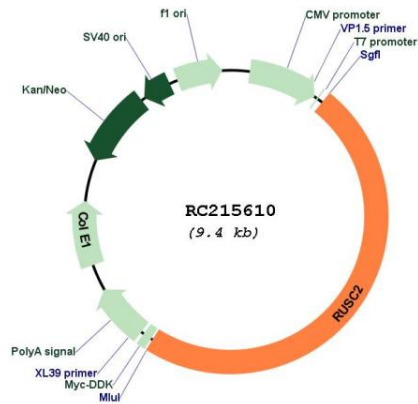
Cloning Scheme:



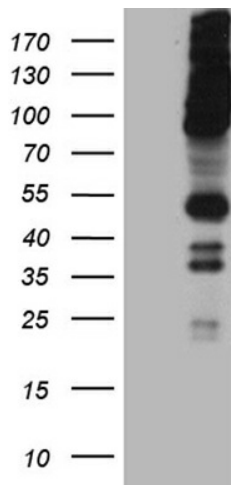
ACCN: NM_014806

ORF Size:	4548 bp
OTI Disclaimer:	The molecular sequence of this clone aligns with the gene accession number as a point of reference only. However, individual transcript sequences of the same gene can differ through naturally occurring variations (e.g. polymorphisms), each with its own valid existence. This clone is substantially in agreement with the reference, but a complete review of all prevailing variants is recommended prior to use. More info
OTI Annotation:	This clone was engineered to express the complete ORF with an expression tag. Expression varies depending on the nature of the gene.
Components:	The ORF clone is ion-exchange column purified and shipped in a 2D barcoded Matrix tube containing 10ug of transfection-ready, dried plasmid DNA (reconstitute with 100 ul of water).
Reconstitution Method:	<ol style="list-style-type: none"> 1. Centrifuge at 5,000xg for 5min. 2. Carefully open the tube and add 100ul of sterile water to dissolve the DNA. 3. Close the tube and incubate for 10 minutes at room temperature. 4. Briefly vortex the tube and then do a quick spin (less than 5000xg) to concentrate the liquid at the bottom. 5. Store the suspended plasmid at -20°C. The DNA is stable for at least one year from date of shipping when stored at -20°C.
RefSeq:	NM_014806.4
RefSeq Size:	5199 bp
RefSeq ORF:	4551 bp
Locus ID:	9853
UniProt ID:	Q8N2Y8
Cytogenetics:	9p13.3
MW:	161 kDa
Gene Summary:	This gene encodes a RUN and SH3 domain containing protein that interacts with Rab1b and Rab1-binding protein GM130. Alternatively spliced transcript variants have been observed for this gene. [provided by RefSeq, Jun 2012]

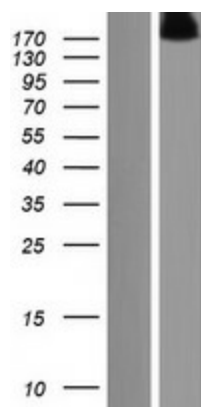
Product images:



Circular map for RC215610



HEK293T cells were transfected with the pCMV6-ENTRY control (Cat# [PS100001], Left lane) or pCMV6-ENTRY RUSC2 (Cat# RC215610, Right lane) cDNA for 48 hrs and lysed. Equivalent amounts of cell lysates (5 ug per lane) were separated by SDS-PAGE and immunoblotted with anti-RUSC2 (Cat# [TA811460])(1:2000). Positive lysates [LY415015] (100ug) and [LC415015] (20ug) can be purchased separately from OriGene.



Western blot validation of overexpression lysate (Cat# [LY415015]) using anti-DDK antibody (Cat# [TA50011-100]). Left: Cell lysates from untransfected HEK293T cells; Right: Cell lysates from HEK293T cells transfected with RC215610 using transfection reagent MegaTran 2.0 (Cat# [TT210002]).