

Product datasheet for RC215607

LETM2 (NM_144652) Human Tagged ORF Clone

Product data:

Product Type:	Expression Plasmids
Product Name:	LETM2 (NM_144652) Human Tagged ORF Clone
Tag:	Myc-DDK
Symbol:	LETM2
Synonyms:	SLC55A2
Mammalian Cell Selection:	Neomycin
Vector:	pCMV6-Entry (PS100001)
E. coli Selection:	Kanamycin (25 ug/mL)
ORF Nucleotide Sequence:	>RC215607 representing NM_144652 Red=Cloning site Blue=ORF Green=Tags(s)

TTTTGTAATACGACTCACTATAGGGCGGCCGGAATTCGTCGACTGGATCCGGTACCGAGGAGATCTGCC
GCC**CGATCGCC**

ATGAAGAACTATGAGAGCAAGAAGTACTCGGATCCTAGTCAGCCAGGCAATACAGTACTTCACCCAGGAA
CTAGACTAATACAAAAGCTACACACATCCACTTGGCTGCAAGAAGTTCCTGGCAAACCTCAGCTGGA
GCAAGCCACAAAACATCCACAGGTGACAAGCCCTCAGGCCACAAAAGAACTGGCATGGAGATTAAGAA
GGCAAACAATCTTATAGACAAAAATCATGGATGAACTAAAATATTATTACAATGGATTCTACTTACTTT
GGATTGACGCCAAAGTTGCTGCCAGAATGGTTGGAGGCTGTTGCATGGACAGGTCTGACCAGACGAGA
GAGACGAAGGGAAGAAAACAGAAAAGAAAATGGCTGTAAAGTTGGAAGTAGCAAAATTTCTTCAAGAA
ACCATGACAGAAATGGCAAGGAGGAACAGAGCCAAAGATGGGCGATGCCTCTACACAGCTCTCATCTACG
TGAAGCAGGTCCAGACAGGCCACAAGCCCAGCACAAAAGGAGATAGTTTCGCTTCTCCTCAAACTATTTGAGGA
CCAGCTGGCCCTGGAACACTTAGATCGCCCTCAGCTGGTTGCCCTTTGCAAAGTCTGGAATTCAGACA
TTTGAACCAACAACCTGCTCCGCTTTCAGCTCCTGATGAACTGAAGTCTATAAAAGCAGATGATGAAA
TAATTGCCAAGGAAGGGGTGACAGCATTGAGTGTATCAGAACTACAGGCTGCCTGATGGGCCCGAGGGAT
GAGTCACTGGTCTCACGGAGGAACAACCTGCGACAACAGCTCACGGAGTGGCAGGACCTCCACCTGAAG
GAGAAGTCCCTCCTTCCCTTTTGTCTCCCGCACCTTCTACCTGATAGATGTAAGCCCAAGCCCA
TTGAGATACCACTCAGTGGGAGGCTCCAAGACTGATATTCTTGTGGAATTACCTACTTTCACTGAATC
TAAAGAGAACATGGTGGATCTTGCACTCAACTGAAGGGAACAAAGGATGAAGACTTTATACAGCCGCCA
CCAGTTACATCATACCCATAACACCATCAACACCTATTTCACTAACAAAGGACCCATCACTTCTCTG
AAGAACCTACACTCCAGGCCAAATCACAAATGACGGCCAGAACAGCAAGGCTAGTTCAAAGGAGCA

ACGCGTACGCGGCCGCTCGAGCAGAACTCATCTCAGAAGAGGATCTGGCAGCAATGATATCCTGGATT
ACAAGGATGACGACGATAAGGTTTAA



[View online »](#)

- Reconstitution Method:**
1. Centrifuge at 5,000xg for 5min.
 2. Carefully open the tube and add 100ul of sterile water to dissolve the DNA.
 3. Close the tube and incubate for 10 minutes at room temperature.
 4. Briefly vortex the tube and then do a quick spin (less than 5000xg) to concentrate the liquid at the bottom.
 5. Store the suspended plasmid at -20°C. The DNA is stable for at least one year from date of shipping when stored at -20°C.

RefSeq: [NM_144652.3](#)

RefSeq Size: 1631 bp

RefSeq ORF: 1191 bp

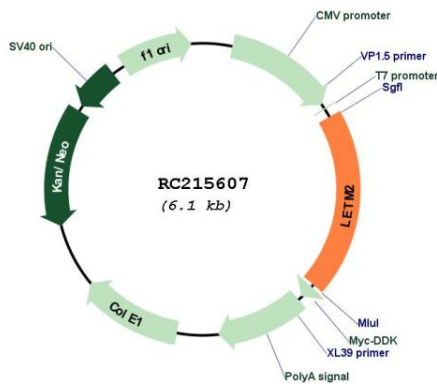
Locus ID: 137994

UniProt ID: [Q2VYF4](#)

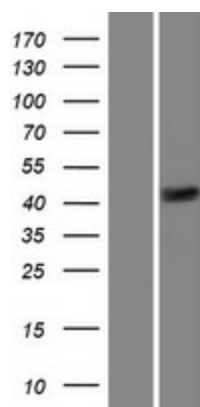
Cytogenetics: 8p11.23

MW: 44.7 kDa

Product images:



Circular map for RC215607



Western blot validation of overexpression lysate (Cat# [LY408193]) using anti-DDK antibody (Cat# [TA50011-100]). Left: Cell lysates from untransfected HEK293T cells; Right: Cell lysates from HEK293T cells transfected with RC215607 using transfection reagent MegaTran 2.0 (Cat# [TT210002]).