

## Product datasheet for **RC215602**

### **BTBD11 (NM\_001017523) Human Tagged ORF Clone**

#### **Product data:**

Product Type:	Expression Plasmids
Product Name:	BTBD11 (NM_001017523) Human Tagged ORF Clone
Tag:	Myc-DDK
Symbol:	BTBD11
Synonyms:	ABTB2B
Mammalian Cell Selection:	Neomycin
Vector:	pCMV6-Entry (PS100001)
E. coli Selection:	Kanamycin (25 ug/mL)



[View online »](#)

ORF Nucleotide  
Sequence:

>RC215602 representing NM\_001017523  
Red=Cloning site Blue=ORF Green=Tags(s)

TTTTGTAATACGACTCACTATAGGGCGGCCGGAATTCGTCGACTGGATCCGGTACCGAGGAGATCTGCC  
GCC**CGCATCGCC**

ATGAGGAAACTGAGGCCAAGGATTCCAGAGAGCCTGCCCGGGTACCAGGTGCGGTCCGGATGTCTCC  
AAAGGCTCTCCCACTACTCTGGAATTACAGAGCCCTTCTCGTGTGCCCGCTGATGGAGTGGATCCG  
GGTGGCCGTGGCGCACGCCGCCACCGCCGAGCTTCTCCATGGACAGCGACGACTCCGCCAGGCGGCC  
CGGCTGTCTGCCCGCGTGGACTGCGAGCCGCCAGCTCAGGGCCGACGACTGCTTTTGTGCATCTC  
GAAAGCTGGATGCGGTGGCCATCGAAGCCAAGTTAAGCAGGACCTGGGTTTCCGGATGTGAACTGTGG  
ACGAACAGACCTGGTGAAGCAGGCAGTGTCTCTGCTGGGGCCGATGGGATCAACACCATGAGCGAACAG  
GGCATGACTCCCCTGATGTATGCCTGCTCCGTGGGACGAGGCGATGGTTCAGATGCTGCTGGATGCCG  
GAGCTGACCTGAATGTGGAGTTGTCACTACTCCTATAAATATCCATCCGTCCACCCCGAGACCCGCCA  
TTGGACGGCTCTGACTTTTGTGTGTGGACATATTCCTGTAGTTCAGCTCCTCCTGGATGCTGGG  
GCCAAGGTGGAAGGCTCAGTGGAGCATGGCGAGGAGAAGTACTCGAAACACCCCTCCAGCTGGCAGCTG  
CTGTAGGAAATTTGAGCTGGTTAGTTTGTGTTGGAGCGTGGTCCCGATCCCCTGATAGGAACCATGTA  
CAGGAATGGAATTTCTACAACCCCCAGGGTATGAACTCTTTCAGCCAGGCTGCAGCCACGGACAC  
AGGAATGTGTTCCGCAAAGTCTCGCCAGCCAGAGAAGGAGAAGAGTATATCCTGTCCCTGGAGGAGA  
TTCTGGCCGAGGGGACTGACCTGGCGGAGACAGCCCGCCCTTGTGCGCCAGCCGCAACAGCAAGGC  
CAAAGTGAAGGCTGAGGGAGGCCATGTATCACAGCGCTGAGCATGGTACGTGGATGTCACAATTGAT  
ATCAGGAGCATAGGCGTCCCGTGGACTCTGCACACGTGGCTGGAGTCTTGGCGATCGCCTCCAGCAGC  
ACCGCAGGCCTCTCATCCAGTGTGTTAAAGGAGTTAAGACCATTACAGGAGGAGGAATACACGGAGGA  
GCTCGTTACCCAAGGCTGCCCTGATGTTTGAATCCTGAAAGCGAGCAAGAATGAAGTATCAGCCAG  
CAGCTGTGCGTCACTTACACACTGCTACGGCCCTACCCCATCCCAAGCTCACAGAAATCAAACGGA  
AACAGACCTCGCGCTTGGATCCTCATTTTCTTAACAATAAAGAAATGTCTGATGTTACATTTCTGGTAGA  
AGGAAGACCATTTATGCTCACAAAGTGTGTTATTTACAGCCTCTCAAGGTTCAAAGCACTCCTCTCC  
AGCAAGCCGACAAATGATGGCACCTGCATAGAGATTGGTTATGTGAAATACTCCATCTTTCAGCTGGTTA  
TGCAGTATCTCTACTATGGTGGCCAGAGTCACTGCTCATTAAAAACAATGAGATCATGGAGCTTCTGTC  
TGCTGCTAAGTTTTTCCAGCTGGAGCTTTCAGCGACACTGTGAGATTATCTGTGCGAAAAGCATCAAT  
ACCGACAAGTGTGGATATTTACAACCATGCCAAGTTTCTTGGAGTACAGAGCTCTCAGCATATTGCG  
AAGGCTACTTTCTCAAAAACATGATGGTCTCATTGAAAACGAAGCATTCAAGCAGCTCCTGTATGACAA  
AAATGGTGAAGGGACCGCCAGGATGTGCTCCAGGACTTACAGAGGACGTTGGCCATCAGAATTCAGTCC  
ATCCACTGTGCTCTTCCAAAGTTCCGTGTA

**ACGCGT**ACGCGGCCGCTCGAGCAGAACTCATCTCAGAAGAGGATCTGGCAGCAAATGATATCCTGGATT  
ACAAGGATGACGACGATAAGGTTTAA



**Reconstitution Method:**

1. Centrifuge at 5,000xg for 5min.
2. Carefully open the tube and add 100ul of sterile water to dissolve the DNA.
3. Close the tube and incubate for 10 minutes at room temperature.
4. Briefly vortex the tube and then do a quick spin (less than 5000xg) to concentrate the liquid at the bottom.
5. Store the suspended plasmid at -20°C. The DNA is stable for at least one year from date of shipping when stored at -20°C.

**RefSeq:** [NM\\_001017523.2](#)

**RefSeq Size:** 3900 bp

**RefSeq ORF:** 1926 bp

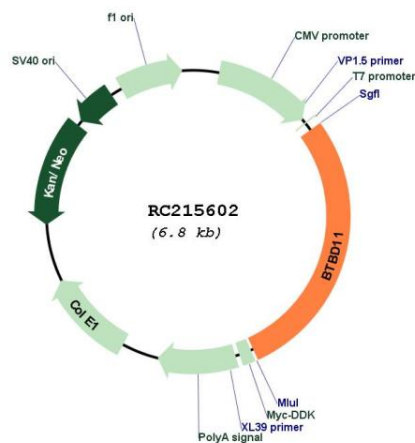
**Locus ID:** 121551

**UniProt ID:** [A6QL63](#)

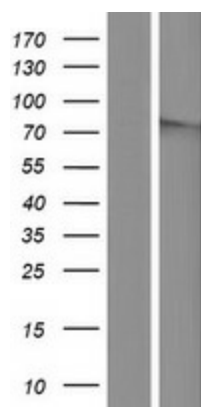
**Cytogenetics:** 12q23.3

**MW:** 71.7 kDa

### Product images:



Circular map for RC215602



Western blot validation of overexpression lysate (Cat# [LY422738]) using anti-DDK antibody (Cat# [TA50011-100]). Left: Cell lysates from untransfected HEK293T cells; Right: Cell lysates from HEK293T cells transfected with RC215602 using transfection reagent MegaTran 2.0 (Cat# [TT210002]).