

Product datasheet for **RC215601L4V**

MUPCDH (CDHR5) (NM_021924) Human Tagged ORF Clone Lentiviral Particle

Product data:

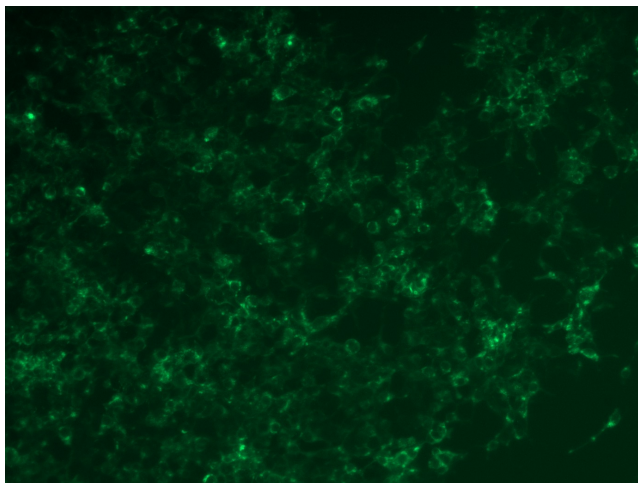
Product Type:	Lentiviral Particles
Product Name:	MUPCDH (CDHR5) (NM_021924) Human Tagged ORF Clone Lentiviral Particle
Symbol:	MUPCDH
Synonyms:	MLPCDH; MU-PCDH; MUCDHL; MUPCDH
Mammalian Cell Selection:	Puromycin
Vector:	pLenti-C-mGFP-P2A-Puro (PS100093)
Tag:	mGFP
ACCN:	NM_021924
ORF Size:	2535 bp
ORF Nucleotide Sequence:	The ORF insert of this clone is exactly the same as(RC215601).
OTI Disclaimer:	The molecular sequence of this clone aligns with the gene accession number as a point of reference only. However, individual transcript sequences of the same gene can differ through naturally occurring variations (e.g. polymorphisms), each with its own valid existence. This clone is substantially in agreement with the reference, but a complete review of all prevailing variants is recommended prior to use. More info
OTI Annotation:	This clone was engineered to express the complete ORF with an expression tag. Expression varies depending on the nature of the gene.
RefSeq:	NM_021924.2 , NP_068743.1
RefSeq Size:	2973 bp
RefSeq ORF:	2538 bp
Locus ID:	53841
UniProt ID:	Q9HBB8
Cytogenetics:	11p15.5
Protein Families:	Transmembrane
MW:	88 kDa



[View online »](#)

Gene Summary:

This gene is a novel mucin-like gene that is a member of the cadherin superfamily. While encoding nonpolymorphic tandem repeats rich in proline, serine and threonine similar to mucin proteins, the gene also contains sequence encoding calcium-binding motifs found in all cadherins. The role of the hybrid extracellular region and the specific function of this protein have not yet been determined. Alternatively spliced transcript variants encoding different isoforms have been described. [provided by RefSeq, Jan 2010]

Product images:

[RC215601L4] was used to prepare Lentiviral particles using [TR30037] packaging kit. HEK293T cells were transduced with RC215601L4V particle to overexpress human CDHR5-mGFP fusion protein.