

## Product datasheet for **RC215601**

### **MUPCDH (CDHR5) (NM\_021924) Human Tagged ORF Clone**

#### **Product data:**

Product Type:	Expression Plasmids
Product Name:	MUPCDH (CDHR5) (NM_021924) Human Tagged ORF Clone
Tag:	Myc-DDK
Symbol:	MUPCDH
Synonyms:	MLPCDH; MU-PCDH; MUCDHL; MUPCDH
Mammalian Cell Selection:	Neomycin
Vector:	pCMV6-Entry (PS100001)
E. coli Selection:	Kanamycin (25 ug/mL)



[View online »](#)

ORF Nucleotide  
Sequence:

>RC215601 representing NM\_021924  
 Red=Cloning site Blue=ORF Green=Tags(s)

TTTTGTAATACGACTCACTATAGGGCGGCCGGGAATTCGTCGACTGGATCCGGTACCGAGGAGATCTGCC  
 GCC**CGGATCGCC**

ATGGGGTCTTGGGCCCTGCTGTGGCCTCCCTGCTGTTACCGGGCTGCTCGTCCGACCCCGGGGACCA  
 TGGCCCAGGCCAGTACTGCTCTGTGAACAAGGACATCTTTGAAGTAGAGGAGAACAACAATGTCACCGA  
 GCCGCTGGTGGACATCCACGTCCCGGAGGGCCAGGAGGTGACCCTCGGAGCCTTGTCCACCCCTTTGCA  
 TTTTCGGATCCAGGGAAACCAGCTGTTTCTCAACGTGACTCCTGATTACGAGGAGAAGTCACTGCTTGAGG  
 CTCAGCTGCTGTGTGAGAGCGGAGGCACATTGGTGACCCAGCTAAGGGTGTTCGTGTGCTGCTGGACGT  
 CAATGACAATGCCCCGAATCCCTTTAAGACCAAGGAGATAAGGGTGGAGGAGACACGAAAGTGAAC  
 TCCACCGTCATCCCGAGACGCAACTGCAGGCTGAGGACCGGACAAGGACGACATTCTGTTCTACACCC  
 TCCAGGAAATGACAGCAGGTGCCAGTACTTCTCCCTGGTGAGTGTAAACCGTCCCGCCTGAGGCT  
 GGACCGGCCCTGGACTTCTACGAGCGGCCGAACATGACCTTCTGGCTGCTGGTGGGGGACTCCGGGG  
 GAGAATGTGGAACCCAGCCACACTGCCACCGCCACACTAGTGCTGAACGTGGTCCCGCCGACCTGCCGC  
 CCCCCTGGTTCTGCCCTGCACCTTCTCAGATGGCTACGTCTGCATTCAAGCTCAGTACCACGGGGCTGT  
 CCCCACGGGGCACATACTGCCATCTCCCTCGTCTGCGTCCCGGACCCATCTACGCTGAGGACGGAGAC  
 CGCGGCATCAACCAGCCCATCTACAGCATCTTAGGGGAAACGTGAATGGTACATTCATCATCCACC  
 CAGACTCGGGCAACCTCACCGTGGCCAGGAGTGTCCCGAGCCCATGACCTTCTTCTGCTGGTGAAGGG  
 CCAACAGGCCGACCTTGGCCGCTACTCAGTGACCCAGGTACCGTGGAGGCTGTGGCTGCCGCCGGGAGC  
 CCGCCCGCTTCCCCAGAGCCTGTATCGTGGCACCGTGGCGCTGGCGTGGAGCGGGCTTGTGGTCA  
 AGGATGCAGTGCCCTTCTCAGCCTTGAGGATCCAGGCTCAGGACCCGGAGTTCTCGGACCTCAACT  
 GGCCATCACATATCGAATTACCAACCACTCACACTTCCGGATGGAGGGAGAGTTGTGCTGACCACCACC  
 ACACTGGCACAGGCGGGAGCCTTCTACGACAGGTTGAGGCCACAACACGGTGACCTCTGGCACCGCAA  
 CCACAGTCATTGAGATACAAGTTTCCGAACAGGAGCCCCCTCCACAGATGTCCCCCATCCCCAGAGGC  
 TGGAGGAACAACGGCCCTGGACCAGCACCACTTCCGAGGTCCCGAGACCCCTGAGCCCTCCAGGGA  
 CCCTCCACGACAGCTCTGGGGAGGCACAGGCCCTCATCCACCTCTGGCACAACCTGAGGGCCACCAA  
 CCTCGTCCACACCCGGGGGTCCCGGGTGCAGAAAACAGCACCTCCACCAACCAGCCACTCCCGGTGG  
 GGACACAGCACAGACCCAAAGCCAGGAACCTCTCAGCCGATGCCCCCGGTGTGGGAACCAGCACCTCC  
 CACCAACCAGCCACACCCAGTGGGGGCACAGTACAGACCCAGAGCCAGGAACCTCTCAGCCGATGCCCC  
 CAGTATGGGAACCAGCACCTCCACCAACCAGCCACACCCGGTGGGGGCACAGCACAGACCCAGAGGC  
 AGGAACCTCTCAGCCGATGCCCCCGGTATGGGAACCAGCACCTCCACCAACCAACCACACCCGGTGGG  
 GGCACAGCACAGACCCAGAGCCAGGAACCTCTCAGCCGATGCCCTCAGCAAGAGCACCCCATCTTCAG  
 GTGGCGGCCCTCGGAGGACAAGCGCTTCTCGGTGGTGGATATGGCGGCCCTGGGCGGGGTGCTGGGTGC  
 GCTGCTGCTGCTGGCTCTCTTGGCCTCGCCGCTCTTGTCCACAAGCACTATGGCCCCGGCTCAAGTGC  
 TGCTCTGGCAAAGCTCCGGAGCCCCAGCCCCAAGGCTTTGACAACCAGGCGTTCTCCCTGACCACAAGG  
 CCAACTGGGCGCCGTCCCGAGCCACGCACGCCCAAGCCCGGAGGACCCGATGCCCGCAGAGCC  
 CGCACCGCGGTGAGGTCCATCTGACCAAGGAGCGGCCAGAGGGCGGTACAAGGCTGTCTGGTTTG  
 GCGAGGACATCGGGACGGAGGCAGACGTGGTCTTCTAACGCGCCACCTGGACGTGGATGGCGCCAG  
 TGACTCCGGCAGCGCGATGAGGGCAGGGCGCGGGGAGGGGTGGGGTCCCTACGATGCCCGCGTGGT  
 GATGACTCCTACATC

**ACGCGT**ACGCGGCCGCTCGAGCAGAACTCATCTCAGAAGAGGATCTGGCAGCAAATGATATCCTGGATT  
 ACAAGGATGACGACGATAAGGTTTAA

Protein Sequence: >RC215601 representing NM\_021924  
 Red=Cloning site Green=Tags(s)

MGSWALLWPELLFTGLLVRPPGTMAQAQYCSVNKDI FEVEENTNVTEPLVDIHVPEGQEVTLGALSTPFA  
 FRIQGNQLFLNVPDYEEKSLLEAQLLCQSGGLVTLQRLVFSVLDVNDNAPEFPFKTKEIRVEEDTKVN  
 STVIPETQLQAEDRDKDDILFYTLQEMTAGASDYFSLVSVNRPALRLDRPLDFYERPNMTFWLLVRDTPG  
 ENVESHTATATLVLNVVPADLRPPWFLPCTFSDGYVCIQAQYHGAVPTGHILPSPLVLRPGPIYAEDGD  
 RGINQPIIYSIFRGNVNGTFIIHPDGNLTVARSVSPMPTFLLLKVGQQADLARYSVTQVTVEAVAAGS  
 PPRFPQSLYRGTVARGAGAGVVVKDAAAPSQPLRIQAQDPEFSDLNSAITYRITNHSFRMEGEVLLTTT  
 TLAQAGAFYAEVEAHNTVTS GTATTVIEIQVSEQEPPSTDVPPSPEAGGTTGPWTSTTSEVPRPPEPSQG  
 PSTSSGGGTGPHPPSGTTLRPPTSSTPGGSPAENSTSHQPATPGGDTAQTTPKPGTSQPMPPGVGTSTS  
 HQPATPSGGTVQTPEPGTSQPMPPSMGTSTSHQPATPGGGTAQTPEAGTSQPMPPGMGTSTSHQPTTPGG  
 GTAQTPEPGTSQPMPLSKSTPSSGGPSEDKRF SVVDMAALGGVLGALLLLALLGLAVLVHKHYGPRLLK  
 CSGKAPEPQPQGFNDQAF LPDHKNWAPVSPTHDPKPAEAPMPAEPAPPGPASPGGAPEPPAAAARAGGS  
 PTAVRSILTKERRPEGGYKAVWFGEDIGTEADVVLNAPTLDVDGASDSGSGDEGEGAGRGGGYPDAPGG  
 DDSYI

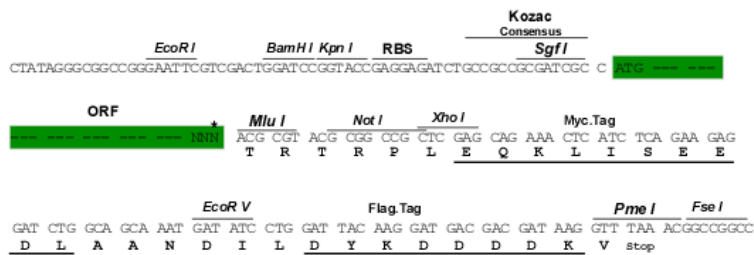
TRTRPLEQKLISEEDLAANDILDYKDDDDKV

Chromatograms: [https://cdn.origene.com/chromatograms/mk8010\\_f09.zip](https://cdn.origene.com/chromatograms/mk8010_f09.zip)

Restriction Sites: SgfI-MluI

Cloning Scheme:

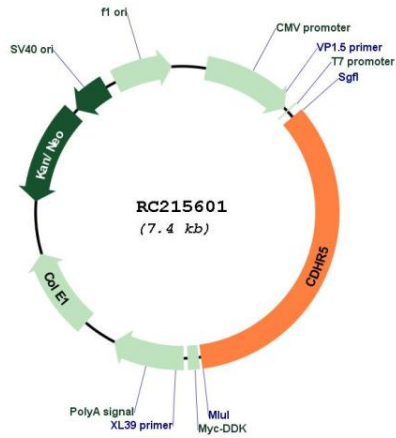
Cloning sites used for ORF Shuttling:



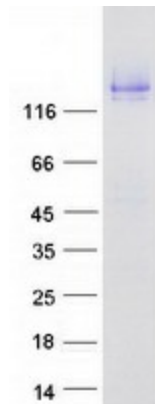
\* The last codon before the Stop codon of the ORF

<b>ACCN:</b>	NM_021924
<b>ORF Size:</b>	2535 bp
<b>OTI Disclaimer:</b>	The molecular sequence of this clone aligns with the gene accession number as a point of reference only. However, individual transcript sequences of the same gene can differ through naturally occurring variations (e.g. polymorphisms), each with its own valid existence. This clone is substantially in agreement with the reference, but a complete review of all prevailing variants is recommended prior to use. <a href="#">More info</a>
<b>OTI Annotation:</b>	This clone was engineered to express the complete ORF with an expression tag. Expression varies depending on the nature of the gene.
<b>Components:</b>	The ORF clone is ion-exchange column purified and shipped in a 2D barcoded Matrix tube containing 10ug of transfection-ready, dried plasmid DNA (reconstitute with 100 ul of water).
<b>Reconstitution Method:</b>	<ol style="list-style-type: none"><li>1. Centrifuge at 5,000xg for 5min.</li><li>2. Carefully open the tube and add 100ul of sterile water to dissolve the DNA.</li><li>3. Close the tube and incubate for 10 minutes at room temperature.</li><li>4. Briefly vortex the tube and then do a quick spin (less than 5000xg) to concentrate the liquid at the bottom.</li><li>5. Store the suspended plasmid at -20°C. The DNA is stable for at least one year from date of shipping when stored at -20°C.</li></ol>
<b>RefSeq:</b>	<a href="#">NM_021924.2</a> , <a href="#">NP_068743.1</a>
<b>RefSeq Size:</b>	2973 bp
<b>RefSeq ORF:</b>	2538 bp
<b>Locus ID:</b>	53841
<b>UniProt ID:</b>	<a href="#">Q9HBB8</a>
<b>Cytogenetics:</b>	11p15.5
<b>Protein Families:</b>	Transmembrane
<b>MW:</b>	88 kDa
<b>Gene Summary:</b>	This gene is a novel mucin-like gene that is a member of the cadherin superfamily. While encoding nonpolymorphic tandem repeats rich in proline, serine and threonine similar to mucin proteins, the gene also contains sequence encoding calcium-binding motifs found in all cadherins. The role of the hybrid extracellular region and the specific function of this protein have not yet been determined. Alternatively spliced transcript variants encoding different isoforms have been described. [provided by RefSeq, Jan 2010]

Product images:



Circular map for RC215601



Coomassie blue staining of purified CDHR5 protein (Cat# [TP315601]). The protein was produced from HEK293T cells transfected with CDHR5 cDNA clone (Cat# RC215601) using MegaTran 2.0 (Cat# [TT210002]).