

## Product datasheet for **RC215590**

### **MAGEB16 (NM\_001099921) Human Tagged ORF Clone**

#### Product data:

Product Type:	Expression Plasmids
Product Name:	MAGEB16 (NM_001099921) Human Tagged ORF Clone
Tag:	Myc-DDK
Symbol:	MAGEB16
Mammalian Cell Selection:	Neomycin
Vector:	pCMV6-Entry (PS100001)
E. coli Selection:	Kanamycin (25 ug/mL)
ORF Nucleotide Sequence:	>RC215590 representing NM_001099921 Red=Cloning site Blue=ORF Green=Tags(s)

TTTTGTAATACGACTCACTATAGGGCGGCCGGAATTCGTCGACTGGATCCGGTACCGAGGAGATCTGCC  
GCC**CGATCGCC**

ATGTCTCAGGATCAGGAGAGTCCACGATGCACACATGATCAGCACCTTCAGACCTTCAGTGAGACCCAGA  
GCCTGGAGGTTGCACAGGTCTCCAAGGCTCTGGAGAAGACCTCCTCCTCCTCCCATCCTCTAGTGCC  
TGGCAAAGTGAAGGAAGCTCCTGCTGCTAAGGCAGAGAGTCTCTTGAGGTTCTCAGAGTTTCTGCTCC  
TCTTCCATTGCCGTCACAACCACCTCATCAAGTGAATCTGATGAGGCTTCAGCAATCAAGAAGAGGAAG  
ATAGTCCAAGCTCCTCAGAGGATACATCAGACCCAGGAATGTGCCCGCAGATGCTCTCGACGAAAGT  
GGCTTTTTTGGTGAATTCATGCTGCACAAGTGTGATGAAAAAGCCAATAACAAGGCAGATATGTTG  
AAGATTATCATCAAAGATGATGAGAGCCACTTCTCTGAGATCCTCCTGAGAGCTTCTGAGCACCTAGAGA  
TGATATTTGGCCTTGATGTGGTGGAGGTGGACCCACCACCCATTGCTATGGCCTTTCATCAAAGTGGG  
CCTCACCTATGATGGGATGCTGAGTGGTAAAAGGTGTGCCAAGACTGGCCTCCTGATAATTGCTCTG  
GGTGTGATCTTCATGAAGGGCAACCGTCCACTGAAGAGGAAGTCTGGGAAGTGTGAATTTGACGGGAG  
TATATTCTGGGAAGAAGCACTTCATCTTTGGAGAGCCAGAATGCTCATCACAAAGATTTTGTGAAGGA  
GAAGTACCTGGAGTACCAGCAGGTGGCCAACAGTATCCTGCACGATATGAATTCCTGTGGGCCCCAAGA  
GCCAAAGCTGAAACCAGCAAGATGAAAGTCTGGAGTTTGTGGCCAAAGTTCATGGGTCTTACCCACATT  
CTTCCCATCTCAGTATGCGGAAGCTCTGAAAGAGGAAGAAGAGAGAGCTAGAGCCAGAATT

**ACGCGT**ACGCGGCCGCTCGAGCAGAAACTCATCTCAGAAGAGGATCTGGCAGCAAATGATATCCTGGATT  
ACAAGGATGACGACGATAAGGTTTAA



[View online »](#)

**Protein Sequence:** >RC215590 representing NM\_001099921  
Red=Cloning site Green=Tags(s)

```
MSQDQESPRCTHDQHLQTFSETQSLEVAQVSKALEKTLSSSHPLVPGKLKEAPAAKAESPLEVPQSFCS
SSIAVTTTSSSEDEASSNQEEEDSPSSSEDTSDPRNVPADALDQKVAFLVNFMLHKCQMKKPITKADML
KIIIKDDESHFSEILLRASEHLEMIFGLDVVEVDPTTHCYGLFIKLGITYDGMLSGEEKVPKTGLLIIVL
GVIFMKGNRATEEEVWEVLNLTGVYSGKKHFIFGEPRLITKDFVKEKYLEYQQVANSDPARYEFLWGPR
AKAETSKMKVLEFVAKVHGSYPHSFPSQYAEALKEEERARARI
```

TRTRPLEQKLISEEDLAANDILDYKDDDDKV

**Chromatograms:** [https://cdn.origene.com/chromatograms/mk8028\\_f12.zip](https://cdn.origene.com/chromatograms/mk8028_f12.zip)

**Restriction Sites:** Sgfl-MluI

**Cloning Scheme:**

Cloning sites used for ORF Shuttling:



\* The last codon before the Stop codon of the ORF

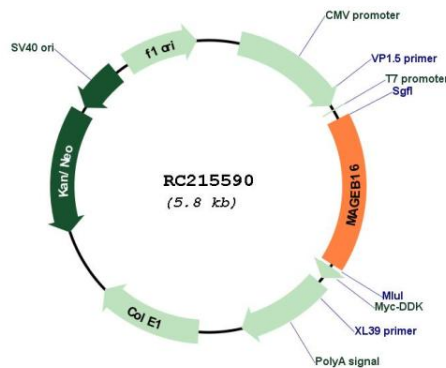
**ACCN:** NM\_001099921

**ORF Size:** 972 bp

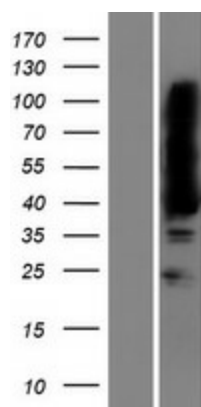
**OTI Disclaimer:** Due to the inherent nature of this plasmid, standard methods to replicate additional amounts of DNA in E. coli are highly likely to result in mutations and/or rearrangements. Therefore, OriGene does not guarantee the capability to replicate this plasmid DNA. Additional amounts of DNA can be purchased from OriGene with batch-specific, full-sequence verification at a reduced cost. Please contact our customer care team at [custsupport@origene.com](mailto:custsupport@origene.com) or by calling 301.340.3188 option 3 for pricing and delivery.

The molecular sequence of this clone aligns with the gene accession number as a point of reference only. However, individual transcript sequences of the same gene can differ through naturally occurring variations (e.g. polymorphisms), each with its own valid existence. This clone is substantially in agreement with the reference, but a complete review of all prevailing variants is recommended prior to use. [More info](#)

<b>OTI Annotation:</b>	This clone was engineered to express the complete ORF with an expression tag. Expression varies depending on the nature of the gene.
<b>Components:</b>	The ORF clone is ion-exchange column purified and shipped in a 2D barcoded Matrix tube containing 10ug of transfection-ready, dried plasmid DNA (reconstitute with 100 ul of water).
<b>Reconstitution Method:</b>	<ol style="list-style-type: none"> <li>1. Centrifuge at 5,000xg for 5min.</li> <li>2. Carefully open the tube and add 100ul of sterile water to dissolve the DNA.</li> <li>3. Close the tube and incubate for 10 minutes at room temperature.</li> <li>4. Briefly vortex the tube and then do a quick spin (less than 5000xg) to concentrate the liquid at the bottom.</li> <li>5. Store the suspended plasmid at -20°C. The DNA is stable for at least one year from date of shipping when stored at -20°C.</li> </ol>
<b>RefSeq:</b>	<u>NM_001099921.2</u>
<b>RefSeq Size:</b>	1818 bp
<b>RefSeq ORF:</b>	975 bp
<b>Locus ID:</b>	139604
<b>UniProt ID:</b>	<u>A2A368</u>
<b>Cytogenetics:</b>	Xp21.1
<b>MW:</b>	36 kDa

**Product images:**


Circular map for RC215590



Western blot validation of overexpression lysate (Cat# [LY420212]) using anti-DDK antibody (Cat# [TA50011-100]). Left: Cell lysates from untransfected HEK293T cells; Right: Cell lysates from HEK293T cells transfected with RC215590 using transfection reagent MegaTran 2.0 (Cat# [TT210002]).