

## Product datasheet for RC215589

### MPIG6B (NM\_138274) Human Tagged ORF Clone

#### Product data:

**Product Type:** Expression Plasmids  
**Product Name:** MPIG6B (NM\_138274) Human Tagged ORF Clone  
**Tag:** Myc-DDK  
**Symbol:** MPIG6B  
**Synonyms:** C6orf25; G6b; G6b-B; NG31; THAMY  
**Mammalian Cell Selection:** Neomycin  
**Vector:** pCMV6-Entry (PS100001)  
**E. coli Selection:** Kanamycin (25 ug/mL)  
**ORF Nucleotide Sequence:** >RC215589 representing NM\_138274  
 Red=Cloning site Blue=ORF Green=Tags(s)

TTTTGTAATACGACTCACTATAGGGCGCCGGGAATTCGTCGACTGGATCCGGTACCGAGGAGATCTGCC  
 GCC**CGATCGCC**

ATGGCTGTGTTTCTGCAGCTGCTACCGCTGCTGCTCTCGAGGGCCCAAGGGAACCCTGGGGCTTCTCTGG  
 ACGGCCGCCCTGGGGACCGGGTGAATCTCTCTCGGGAGGAGTCTCTCATCCCATCCGCTGGGTCTGGGC  
 ACCCAGCTTCCCGCCTGCAAGGGCCTGTCAAAGGACCGCGACCGATCCTGTGGCCTCTTCGAGCGGG  
 ACCCCACCGTGCCTCCCTCCAGCCTTTCGTCGGCCGCTACGCTCCCTGGACTCTGGTATCCGGCGGC  
 TGGAGCTCCTCTTGAAGCGGGGAGACTCGGGCACTTTTTTCTGCAAGGGCCGCCACGAGGACGAGAGCCG  
 TACAGTGTTCACGTGCTGGGGACAGGACCTATTGCAAGGCCCCCGGGCTACCCATGCTCTGTCCCCC  
 CCACATAGCTCCACTTGTGAAAACCGAGCCCCAGAGGCCAGTAAAGGAGGAAGAGCCCAAGATCCAGGG  
 GACCTGGACCAGGAACCGAGCCTGCTCTATGCGGATCTGGACCATCTAGCCCTCAGCAGGCCCGCCGGC  
 TGTCCACAGCGGACCCTGC

**ACGCGT**ACGCGGCCGCTCGAGCAGAACTCATCTCAGAAGAGGATCTGGCAGCAATGATATCCTGGATT  
 ACAAGGATGACGACGATAAGGTTTAA

**Protein Sequence:** >RC215589 representing NM\_138274  
 Red=Cloning site Green=Tags(s)

MAVFLQLLPLLLSRAQGNPGASLDGRPGDRVNLSCGGVSHPIRWVWAPSFACKGLSKGRRPILWASSSG  
 TPTVPPLQPFVGRRLRSLDSGIRRELELLSAGDSGTFCKGRHEDESRTLHLVLDRTYCKAPGPHALSP  
 PHSSTCENRAPEASKGGRAQDSRGPGPTEPALCGSGPSSPQQAPPAVHSGPC

**TRTRPLEQKLISEEDLAANDILDYKDDDDKV**



[View online »](#)

Chromatograms: [https://cdn.origene.com/chromatograms/ja1455\\_g09.zip](https://cdn.origene.com/chromatograms/ja1455_g09.zip)

Restriction Sites: SgfI-MluI

Cloning Scheme:



ACCN: NM\_138274

ORF Size: 579 bp

OTI Disclaimer: The molecular sequence of this clone aligns with the gene accession number as a point of reference only. However, individual transcript sequences of the same gene can differ through naturally occurring variations (e.g. polymorphisms), each with its own valid existence. This clone is substantially in agreement with the reference, but a complete review of all prevailing variants is recommended prior to use. [More info](#)

OTI Annotation: This clone was engineered to express the complete ORF with an expression tag. Expression varies depending on the nature of the gene.

Components: The ORF clone is ion-exchange column purified and shipped in a 2D barcoded Matrix tube containing 10ug of transfection-ready, dried plasmid DNA (reconstitute with 100 ul of water).

Reconstitution Method:

1. Centrifuge at 5,000xg for 5min.
2. Carefully open the tube and add 100ul of sterile water to dissolve the DNA.
3. Close the tube and incubate for 10 minutes at room temperature.
4. Briefly vortex the tube and then do a quick spin (less than 5000xg) to concentrate the liquid at the bottom.
5. Store the suspended plasmid at -20°C. The DNA is stable for at least one year from date of shipping when stored at -20°C.

RefSeq: [NM\\_138274.1](#), [NP\\_612118.1](#)

RefSeq Size: 613 bp

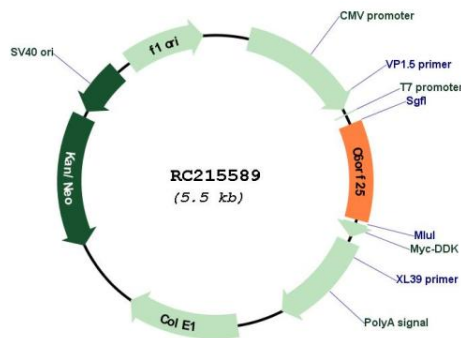
RefSeq ORF: 582 bp

Locus ID: 80739

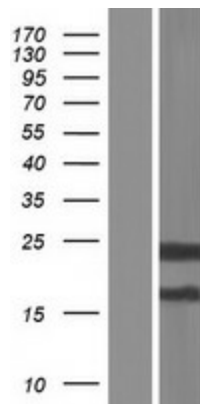
**UniProt ID:** [O95866](#)  
**Cytogenetics:** 6p21.33  
**Protein Families:** Druggable Genome, Transmembrane  
**MW:** 18.3 kDa

**Gene Summary:** This gene is a member of the immunoglobulin (Ig) superfamily and is located in the major histocompatibility complex (MHC) class III region. The protein encoded by this gene is a glycosylated, plasma membrane-bound cell surface receptor, but soluble isoforms encoded by some transcript variants have been found in the endoplasmic reticulum and Golgi before being secreted. Multiple transcript variants encoding different isoforms have been found for this gene. [provided by RefSeq, Jul 2008]

### Product images:



Circular map for RC215589



Western blot validation of overexpression lysate (Cat# [LY408735]) using anti-DDK antibody (Cat# [TA50011-100]). Left: Cell lysates from untransfected HEK293T cells; Right: Cell lysates from HEK293T cells transfected with RC215589 using transfection reagent MegaTran 2.0 (Cat# [TT210002]).