

## Product datasheet for **RC215587**

### AFAP (AFAP1) (NM\_198595) Human Tagged ORF Clone

#### Product data:

Product Type:	Expression Plasmids
Product Name:	AFAP (AFAP1) (NM_198595) Human Tagged ORF Clone
Tag:	Myc-DDK
Symbol:	AFAP
Synonyms:	AFAP; AFAP-110; AFAP110
Mammalian Cell Selection:	Neomycin
Vector:	pCMV6-Entry (PS100001)
E. coli Selection:	Kanamycin (25 ug/mL)



[View online »](#)

**ORF Nucleotide  
Sequence:**

>RC215587 ORF sequence  
 Red=Cloning site Blue=ORF Green=Tags(s)

TTTTGTAATACGACTCACTATAGGGCGGCCGGGAATTCGTCGACTGGATCCGGTACCGAGGAGATCTGCC  
 GCC**GCGATCGCC**

ATGGAAGAGTTAATAGTTGAACTTCGTCTTTTCTTGAACCTCCTGGACCATGAATATCTAACCTCAACTG  
 TCAGGGAGAAAAAGGCAGTGATAACCAACATTCTGCTAAGAATACAGTCATCCAAAGTTTTGATGTGAA  
 GGACCATGCTCAGAAGCAGGAGACCGCTAACAGCCTGCCAGCCCTCCTCAGATGCCCTGCCGGAGATC  
 CCTCAGCCCTGGCTGCCTCCTGACAGTGGGCTCCACCATTGCCAACATCCTCCCTCCAGAAGTTATT  
 ATGAGGAAGCTGTGCCACTGAGCCCGAAAAGCTCCGGAATACATCACATCAAATTATGATTCCGATGC  
 GATGAGCAGCTTTATGAGTCGTATGATGAAGAGGAGGAGGATGGGAAGGGGAAGAAAACCCGGCACCAG  
 TGGCCCTCCGAGGAGGCCTCCATGGACCTGGTCAAGGACGCCAAAATCTGCGCTTCCTGCTGCGGAAGA  
 AGCGGTTCCGCCAGTGGACCAAGTTGCTCTGCGTCATCAAAGACACCAAACCTGCTGTGCTATAAAAGTTC  
 CAAGGACCAGCAGCCTCAGATGGAAGTCCACTCCAAGGCTGTAACATTACGTACATCCCGAAAGACAGC  
 AAAAAGAAGAAGCACGAGCTGAAGATTACTCAGCAGGGCACGGACCCGCTTGTTCGCGCTCCAGAGCA  
 AGGAACAGGCCGAGCAGTGGCTGAAGGTGATCAAAGAAGCCTACAGTGGTTGTAGTGGCCCCGTGGATTC  
 AGAGTGTCTCTCCACCAAGCTCCCGGTGCACAAGGCAGAAGTGGAGAAGAACTGTCTTCAGAGAGA  
 CCCAGCTCAGATGGGGAGGGTGTGTGGAAAATGGAATTACCACATGTAATGGAAAGGAGCAAGTGAAGA  
 GGAAGAAAAGTTCCAAATCAGAGGCCAAGGGCACTGTGTGAAAGTCACTGGGAAAAAATCACCAAGAT  
 CATCAGTCTGGGAAAGAAAAGCCGTCCACAGACGAGCAGACCTCCTCAGCTGAGGAAGATGTTCCACCC  
 TGCGGCTATCTGAACGTGCTCTCCAACAGCCGCTGGCGAGAGCGCTGGTGGCAGTGAAGATAACAAGC  
 TCATTTTCCACAAGGACAGGACCGACTGAAGACCCATATTGTGTCTATTCGCTCCGTGGCTGCGAGGT  
 GATCCCGGGTTTGGATTGTAACATCCTCTGACGTTCCGGCTGCTGCGCAACGGCCAGGAGTTGCAGTA  
 TTGGAGGCATCTTCTTGAAGACATGGGCAGGTGGATTGGGATTTTACTCGCAGAGACGGGATCGTCCA  
 CAGACCCGGAGGCTCTGCACTATGACTACATTGATGTGGAGATGTCTGCAAGTGTCACTCAGACAGCCAA  
 ACAGACCTTCTGTTTCATGAACAGGCGTGTATATCTGCTAACCCATATCTAGGGGGCACCTCCAACGGC  
 TATGCCACCCAGCGGGACGGCACTTCAATATGACGATGTCCCGTGCATCAACGGCTCGCTCAAGGGTA  
 AAAAGCCCCCGTGGCGTCTAATGGGGTACAGGAAAAGGGAAGACTCTGAGCAGTCAGCCAAAGAAAGC  
 GGATCCCGCGGCTGTGTGAAAAGGACGGGTTCGAATGCTGCCAGTACAAGTATGGCAAGAACCGGGTA  
 GAAGCAGATGCCAAGCGGCTACAGACCAAGAGGAGGAGCTGCTGAAGAGGAAAGAGGCCCTGCGGAATA  
 GGCTGGCCAGCTCCGCAAGGAAAGAAAAGACCTTCGAGCGGCTATTGAAGTGAACGCCGCGCAGGAAGCC  
 GCAGGCGATCCTGGAGGAGAAGCTGAAGCAGCTGGAGGAGGAGTGCCGGCAGAAGGAGGCCGAGCGTGT  
 AGCCTGGAGCTGGAGCTGACGGAGGTCAAGGAGAGCCTGAAGAAAGCGCTGGCGGGCGGAGTCACCTGG  
 GGCTGGCCATCGAGCCCAAGTCAGGGACATCGAGTCCACAGTCTCCAGTGTTCGGCACCCGACCTGGA  
 AAACCTCGCCATCTCAGCTGTGACACCAGTGACACCGAGGGCCCGTCCCGGTGAACAGCGCGGCCGTC  
 TTGAAGAAGAGCCAGGCTGCCCGGGCAGCTCCCCTGCCGAGGGCATGTGCTGCGGAAGGCCAAGGAAT  
 GGAATTGAAGAACGGGACC

**ACGCGT**ACGCGGCGCTCGAGCAGAACTCATCTCAGAAGAGGATCTGGCAGCAAATGATATCCTGGATT  
 ACAAGGATGACGACGATAAGGTTTAA

**Protein Sequence:** >RC215587 protein sequence  
Red=Cloning site Green=Tags(s)

```
MEELIVELRFLLELLDHEYLTVREKKAVITNILLRIQSSKGFVDKHAQKQETANSLPAPPQMPLEI
PQPWLPPDSGPPPLPTSSLPEGYEEAVPLSPGKAPEYITSNYDSAMSSSYEYDEEEEDGKGGKTRHQ
WPSEEASMDLVKDAKICAFLLRKRFGQWTKLLCVIKDKLLCYKSSKDQQPMELPLQGCNITYIPKDS
KKKKHELKITQQGTDPLVLAVQSKEQAEQWLKVIKEAYSGSGPVDSECP PPPSPVHKALEKLSER
PSSDGEVVENGIITTCNGKEQVKKRKSSEAKGTVSKVTGKKITKIIISLGKKKPTDEQTSAAEDVPT
CGYLNVLNSRWREWRVKNKLI FHKDRD LKTHIVSIPLRGCEVIPGLDCKHPLTFRLLRNQEVAV
LEASSSEDMGRWIGILL AETGSSTDPEALHYDIDVEMSASVIQTAKQTF CFMNRVVISANPYLGGTSNG
YAHPSGTALHYDDVPCINGSLGKGGKPPVANSNGVTGKGKTLSSQPKKADPAAVVKRTGSNAAQYKGNRV
EADAKRLQTKKEELLKRKEALNRLAQLRKERKDLRAAIEVNAGRKPQAILEELKQLEEECRQKEAERV
SLELEL TEVKESLKKALAGVTLGLAIEPKSGTSSPQSPVFRHRTLENSPISSCDTSDEGPPVNSAAV
LKKSQAAPGSSPCRGHVLRKAKEWELKNGT
```

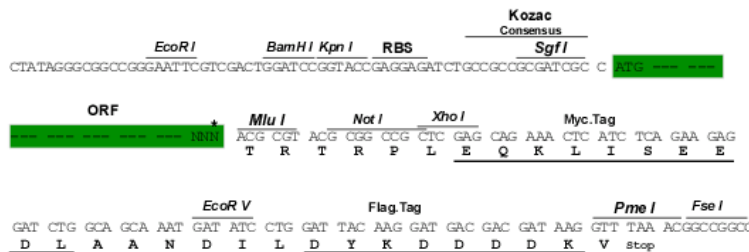
TRTRPLEQKLISEEDLAANDILDYKDDDDKV

**Chromatograms:** [https://cdn.origene.com/chromatograms/mk6518\\_f06.zip](https://cdn.origene.com/chromatograms/mk6518_f06.zip)

**Restriction Sites:** SgfI-MluI

**Cloning Scheme:**

Cloning sites used for ORF Shuttling:



\* The last codon before the Stop codon of the ORF

**ACCN:** NM\_198595

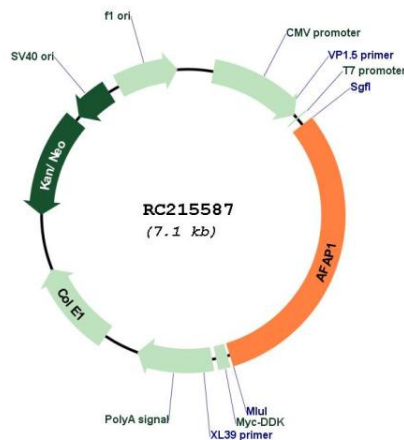
**ORF Size:** 2190 bp

**OTI Disclaimer:** The molecular sequence of this clone aligns with the gene accession number as a point of reference only. However, individual transcript sequences of the same gene can differ through naturally occurring variations (e.g. polymorphisms), each with its own valid existence. This clone is substantially in agreement with the reference, but a complete review of all prevailing variants is recommended prior to use. [More info](#)

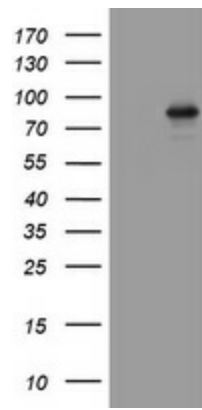
**OTI Annotation:** This clone was engineered to express the complete ORF with an expression tag. Expression varies depending on the nature of the gene.

<b>Components:</b>	The ORF clone is ion-exchange column purified and shipped in a 2D barcoded Matrix tube containing 10ug of transfection-ready, dried plasmid DNA (reconstitute with 100 ul of water).
<b>Reconstitution Method:</b>	<ol style="list-style-type: none"> <li>1. Centrifuge at 5,000xg for 5min.</li> <li>2. Carefully open the tube and add 100ul of sterile water to dissolve the DNA.</li> <li>3. Close the tube and incubate for 10 minutes at room temperature.</li> <li>4. Briefly vortex the tube and then do a quick spin (less than 5000xg) to concentrate the liquid at the bottom.</li> <li>5. Store the suspended plasmid at -20°C. The DNA is stable for at least one year from date of shipping when stored at -20°C.</li> </ol>
<b>RefSeq:</b>	<u><a href="#">NM_198595.2</a></u> , <u><a href="#">NP_940997.1</a></u>
<b>RefSeq Size:</b>	7534 bp
<b>RefSeq ORF:</b>	2193 bp
<b>Locus ID:</b>	60312
<b>UniProt ID:</b>	<u><a href="#">Q8N556</a></u>
<b>Cytogenetics:</b>	4p16.1
<b>MW:</b>	80.7 kDa
<b>Gene Summary:</b>	The protein encoded by this gene is a Src binding partner. It may represent a potential modulator of actin filament integrity in response to cellular signals, and may function as an adaptor protein by linking Src family members and/or other signaling proteins to actin filaments. Multiple transcript variants encoding different isoforms have been found for this gene. [provided by RefSeq, Aug 2008]

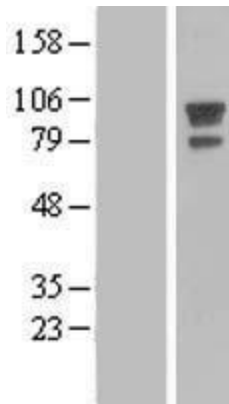
### Product images:



Circular map for RC215587



HEK293T cells were transfected with the pCMV6-ENTRY control (Cat# [PS100001], Left lane) or pCMV6-ENTRY AFAP1 (Cat# RC215587, Right lane) cDNA for 48 hrs and lysed. Equivalent amounts of cell lysates (5 ug per lane) were separated by SDS-PAGE and immunoblotted with anti-AFAP1 (Cat# [TA802329]). Positive lysates [LY404799] (100ug) and [LC404799] (20ug) can be purchased separately from OriGene.



Western blot validation of overexpression lysate (Cat# [LY404799]) using anti-DDK antibody (Cat# [TA50011-100]). Left: Cell lysates from untransfected HEK293T cells; Right: Cell lysates from HEK293T cells transfected with RC215587 using transfection reagent MegaTran 2.0 (Cat# [TT210002]).