

## Product datasheet for **RC215586**

### LINS (LINS1) (NM\_001040616) Human Tagged ORF Clone

#### Product data:

Product Type:	Expression Plasmids
Product Name:	LINS (LINS1) (NM_001040616) Human Tagged ORF Clone
Tag:	Myc-DDK
Symbol:	LINS
Synonyms:	LINS; MRT27; WINS1
Mammalian Cell Selection:	Neomycin
Vector:	pCMV6-Entry (PS100001)
E. coli Selection:	Kanamycin (25 ug/mL)



[View online »](#)

**ORF Nucleotide Sequence:**

>RC215586 representing NM\_001040616  
 Red=Cloning site Blue=ORF Green=Tags(s)

TTTTGTAATACGACTCACTATAGGGCGGCCGGGAATTCGTGACTGGATCCGGTACCGAGGAGATCTGCC  
 GCC**CGGATCGCC**

ATGAAAGTTTTCTGTGAAGTTTTAGAAGAGTTATACAAGAAGGTACTTCTTGAGCCACACTTGAAAATG  
 ACAGCCATGATTACATCTTTTATCTCAACCCAGCAGTTTCAGATCAAGATTGTTCTACAGCCACCTCCTT  
 AGAATGGGCAAACACCTGTGGTATCCAGGGCAGGCATCAGCCATCTCTGTTGGTGTGGCTCCCATTGCT  
 GTAGCACCTGTGTGTTTGAAGACCAACTCTCAGATGAGCGGTTCCAGAGAAGTAATGCTCCTTCAGTTAA  
 CAGTGATCAAAGTGATGACAACCCGGATATTGTCTGTCAAACCCGAGTTCATGCAAAGGAGCAGTACAG  
 AGATGTAATTAATTTCTCTTAGAATCAGCCAAAGTCGATTCTAAATTAATCTGCATGTTCCAAAATTCAG  
 GATAAATTGTTATCTCACATGGCTGCACAGTGCCTTGCATTGCTTCTATATTTCCAATTGAGAGAAAAGA  
 TAACCTTAAGTAATTCCTGGATTGCTTTTTGCCAGAAAAATCTTCTGAATACTCTGAGAGTAATAAAGC  
 AATATACTGCCTCTGGACTCTTACAGCAATAATAAAGAAATCTTTAAAGATTCATGTTACAGAAAACA  
 GAAATTCATAAGCAGTTCCTGACTCATTTTCGACACCATTTTTGAAGTGTGTTACAATTCCTTATTCTCTC  
 AGCATTTTTGAAAAGTCCCGGATACTTCTAAAATAGTAAACATCCTGATGTGTTTCTGGATTTGCTTGA  
 GCTTCTCATCGCCTCCAGAATCCACCTGAAGTTACATTTCACTTGCCAGAGGATTTATTTTTGAAACCA  
 TCTTGATGCTAGAAAGTATTACCTGGCCTATTCAGGCTTTTGTAAAAGGAAGGTCATCATATTCCTCA  
 AAAAGTGCCTTCTGTAAAAGTGGGTGAAGACCTCTGCGTGGATCTGTGCCTGCCTTAATGCCGCCAGA  
 CCATCATGTAGCGGTGGACATGCTGGCTTTAGCTAATGCTGTTTTGCAAGCTGTGAATTCGGGGTGTG  
 AAGACACTGTCTGTTTATGAAAAACATTCCTTTTTGGAGGTGATGAAGTCAACCTGAATGTGAACCTTA  
 TCACTAGTCCAGATCATGTGATCCTTAGAGCAGCAAGCTTAGTTATAATGAAATCCTTAGAAATCAAGTT  
 TCAAAATTATTCTTCAGCAAGTGAATGAAAGTTGACTTACAGAGGTTTCATGTCTGAGTTACTGACCTTC  
 TTAAGCCTCATCTTCAGCCCTCTCTGCAATTACACAATCCGTGCAAATGGCTGTCTCGGGTTTTATAG  
 AACAGACGATGACATGCTGGAGGCTGCCAAGGCATCACTGGGCATCTACTTAACACTGACCAGAGGATG  
 TGAAGCCACTGAAAGCTTGACTCAGGGAAAAGAAATGTGGGACCATCACACACATGAAAATGGCTATAAT  
 CCTCACTGATTTTTCTTGTCTTCTTGAATAATAGGATTTGATTCCACAGTCTTCTTGACTTTTTGA  
 TTTTCATCAGAAACCTGTTTTCTGAATATTTGTTAGATATTTAAATTAAGTACTGAAAAGGACTGGGATAA  
 TTTTTTACCATTGCAATAACTTTGATGCAACTGAATCTAAATATGACATAAGTATTTGGCTGTGTC  
 CCCTCACTTGCCAAGACCAAAGCTCCAACCAACAATACCCATCGTTTGAAGTCTCCTCATAGTCACA  
 GAGATGTGTGCTCGGCACTCCTGGGCTCCGATGCTCCCTCTGAACCACTGAAAGCTGTGATGTCCAA  
 GGGGGCTCACACCATGTGTGCTTCTAGTCTGTCTCCCCCGGGCCTCTCAAAGTCTGGTAGATTACGAC  
 AGCTCTGACGATTCTGACGTGGAATCCACAGAGCAGTGTAGCTAACAGTAAACAGACATCTTTACACC  
 AGCAAGCAACTAAGGAGATTCAGGATGCAGCTGGGACAAGCAGGGATAAAAAAGAATTTAGCCTTGAGCC  
 TCCATCAAGGCCTCTGGTTCTGAAAGAATTTGATACTGCCTTCTCCTTTGATTGTGAAGTAGCCCCAAAT  
 GATGTCGTCTCTGAAGTGGGAATTTTTACAGAATAGTAAATGCTTCCAGGAACATAAGATGCCATCT  
 GCCGTTTGCAAAAGAAAAATCTTTCCCATATAATCCAAGTCACTTTTGAAGTGTGTTAAATACATAGA  
 GGTGATAAGTAATAAAACTATGAACACTTTG

**ACGCGT**ACGCGGCCGCTCGAGCAGAAACTCATCTCAGAAGAGGATCTGGCAGCAAATGATATCCTGGATT  
 ACAAGGATGACGACGATAAGGTTTAA

**Protein Sequence:** >RC215586 representing NM\_001040616  
 Red=Cloning site Green=Tags(s)

MKVFCEVLEELYKKVLLGATLENDSDHYIFYLNPVAVSDQDCSTATSLEWANTCGIQGRHQPI SVGVAPIA  
 VAPVCLKTNSQMSGSRVEMLLQLTVIKVMTRILSVKTEFHAKEQYRDVIKILLES AKVDSKLCMFQNS  
 DKLLSHMAAQLALLLYFQLREKITLSNSWIAFCQKNLSEYSESNKAIYCLWTLTAIIKEIFKDCSQKT  
 EILKQFLTHFDTIFEVFNLSLFSQHFENCRDTSKIVNILMCFDLLELLIASRIHLKLHFTCQRILFLKP  
 SCMLEVITWPIQAFVKRKVIIFLKKCLLCKVGEDLCRGSVPALMPPDHHVAVDMLALANAVLQAVNSGLL  
 KTL SVYEKHSFFGGDEVQPECELITSPDHVILRAASLVIMKSLEIKFQNYSSASEMKVDLQRFMSELLTF  
 LKPHLQPSLQLHNPCKWLSRVFIEQDDMLEAAKASLGIYLTTRGCEATESLTQKEMWDHHTHENGYN  
 PHCIFLFFLNIGFDSTVLLDFLISSETCFLEYFVRYLKLLQKWDNFFTCNNFDATESKYDISICGCV  
 PSLVQDQSSNQTIPHRLTAPHSHRDVCAHRSWASDAPSEPLKAVMSKGAHTMCASSLSSPRASQSLVDYD  
 SSDDSDVESTEQCLANSKQTSLHQATKEIQDAAGTSRDKKEFSLEPPSRPLVLKEFDTAFSFDCEVAPN  
 DVVSEVGIFYRIVKCFQELQDAICRLQKKNLFPYNPTALLKLLKYIEVISNKTMTNL

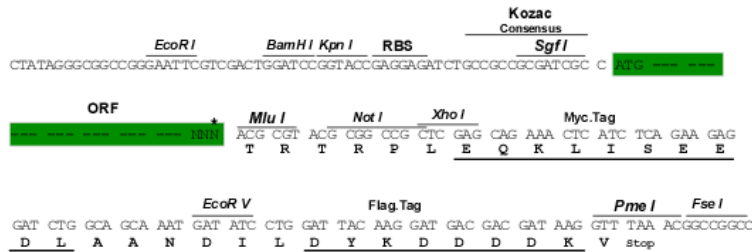
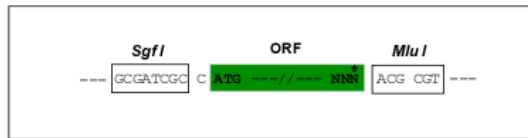
TRTRPLEQKLI SEEDLAANDILDYKDDDDKV

**Chromatograms:** [https://cdn.origene.com/chromatograms/mk8102\\_e05.zip](https://cdn.origene.com/chromatograms/mk8102_e05.zip)

**Restriction Sites:** Sgfl-MluI

**Cloning Scheme:**

Cloning sites used for ORF Shuttling:



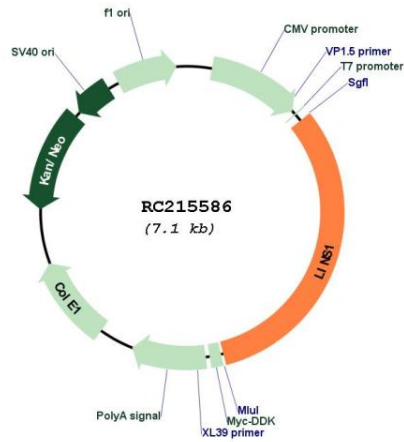
\* The last codon before the Stop codon of the ORF

**ACCN:** NM\_001040616

**ORF Size:** 2271 bp

<b>OTI Disclaimer:</b>	<p>Due to the inherent nature of this plasmid, standard methods to replicate additional amounts of DNA in E. coli are highly likely to result in mutations and/or rearrangements. Therefore, OriGene does not guarantee the capability to replicate this plasmid DNA. Additional amounts of DNA can be purchased from OriGene with batch-specific, full-sequence verification at a reduced cost. Please contact our customer care team at <a href="mailto:custsupport@origene.com">custsupport@origene.com</a> or by calling 301.340.3188 option 3 for pricing and delivery.</p> <p>The molecular sequence of this clone aligns with the gene accession number as a point of reference only. However, individual transcript sequences of the same gene can differ through naturally occurring variations (e.g. polymorphisms), each with its own valid existence. This clone is substantially in agreement with the reference, but a complete review of all prevailing variants is recommended prior to use. <a href="#">More info</a></p>
<b>OTI Annotation:</b>	<p>This clone was engineered to express the complete ORF with an expression tag. Expression varies depending on the nature of the gene.</p>
<b>Components:</b>	<p>The ORF clone is ion-exchange column purified and shipped in a 2D barcoded Matrix tube containing 10ug of transfection-ready, dried plasmid DNA (reconstitute with 100 ul of water).</p>
<b>Reconstitution Method:</b>	<ol style="list-style-type: none"><li>1. Centrifuge at 5,000xg for 5min.</li><li>2. Carefully open the tube and add 100ul of sterile water to dissolve the DNA.</li><li>3. Close the tube and incubate for 10 minutes at room temperature.</li><li>4. Briefly vortex the tube and then do a quick spin (less than 5000xg) to concentrate the liquid at the bottom.</li><li>5. Store the suspended plasmid at -20°C. The DNA is stable for at least one year from date of shipping when stored at -20°C.</li></ol>
<b>RefSeq:</b>	<p><a href="#">NM_001040616.2</a>, <a href="#">NP_001035706.1</a></p>
<b>RefSeq Size:</b>	<p>2512 bp</p>
<b>RefSeq ORF:</b>	<p>2274 bp</p>
<b>Locus ID:</b>	<p>55180</p>
<b>UniProt ID:</b>	<p><a href="#">Q8NG48</a></p>
<b>Cytogenetics:</b>	<p>15q26.3</p>
<b>MW:</b>	<p>85.9 kDa</p>
<b>Gene Summary:</b>	<p>The Drosophila segment polarity gene <i>lin</i> encodes a protein, lines, which plays important roles in development of the epidermis and hindgut. This gene encodes a protein containing a lines-like domain. This gene is located on chromosome 15 and clustered with the gene encoding ankyrin repeat and SOCS box-containing protein 7. Alternative splicing results in multiple transcript variants. [provided by RefSeq, Jun 2017]</p>

Product images:



Circular map for RC215586