

## Product datasheet for RC215584

### GFOD1 (NM\_018988) Human Tagged ORF Clone

#### Product data:

Product Type:	Expression Plasmids
Product Name:	GFOD1 (NM_018988) Human Tagged ORF Clone
Tag:	Myc-DDK
Symbol:	GFOD1
Synonyms:	ADG-90; C6orf114
Mammalian Cell Selection:	Neomycin
Vector:	pCMV6-Entry (PS100001)
E. coli Selection:	Kanamycin (25 ug/mL)
ORF Nucleotide Sequence:	>RC215584 representing NM_018988 Red=Cloning site Blue=ORF Green=Tags(s)

TTTTGTAATACGACTCACTATAGGGCGGCCGGAATTCGTCGACTGGATCCGGTACCGAGGAGATCTGCC  
GCC**CGATCGCC**

ATGCTTCCCGGGTGGCGTGTTTCGGCACCAGCCTCACGGCCCGTGTCATCATCCCCTGCTGAAAGACG  
AGGGCTTCGCGGTGAAGGCGCTGTGGGGCCGCACGCAGGAAGAAGCGGAGGAGCTGGCCAAGGAGATGAG  
TGTCCTTCTACTAGCCGATTGATGAGGTGCTGTCATCAGGACGTGGACTTGGTGTGCATTAAC  
CTGCCCGCCCTCACCAGACAGATCGCTGTCAAACCCTAGGCATCGGCAAGAAGTCATCTGCGACC  
GCACGGCCACGCCGCTGGACGCTTCCGCATGACCTCGGCCGCCACTACTACCCAAGTCATGAGCAT  
CATGGGCAACGTGCTGCGCTTCTGCGGCTTTCGTGCGCATGAAGCAGCTGATCGAGGAGGGCTACGTG  
GGCGAGCCGCTGGTGTGTGAGGTGCAGGTGCACGGCGGCAGCCTGCTGGGCAAGAAGTAACTGGAGCT  
GCGACGACTTGATGGGCGGCGGGCCTGCACTCCGTGGGCACCTACATCATCGACTGCTCACCTTCT  
CACCGGCCAAAAGGCCGTCAAGGTCCACGGGTGCTCAAGACCTTCGTGAAGCAGACTGACCACATCAAG  
GGCATCCGACAGATCACCAGCGATGACTTCTGCACCTCCAGATGGTGTGGAGGGCGGGTGTGCTGCA  
CCGTACCCTCAACTCAACGTGCCCGGCGAGTTCAAGCAGGATGCTACTGTGGTGGGCTCAGCCGGGG  
CCTGCTGGCCGTGGCACCGACCTGTACGGCAGCGCAACAGCGCCCCGGAGCAGGAGCTGCTGGTGCAG  
GACGCCACGCCGGTGAACAACCTCCCTGCTCCGGAGAAGGCCTTCAGCGACATCCCCTCGCCCTACCTGC  
CGGCACCATCAAGATGATGCAGGCGGTGCGCCAGGCCTTCCAGGACCAGGACGACCGGCCACGTGGGA  
TGGGCGGCCCTCACCATGGCCGCCACCTTCGACGACTGCCTGTATGCCTTGTGCGTGGTGGACACCATC  
AAGAGGTCAGCCAGACGGGCGAGTGGCAGAACATTGCCATCATGACCGAGGAGCCGGAGCTGAGCCCCG  
CCTACCTGATCAGCGAGGCCATGCGCCGACGAGGATGTCCCTCTACTGT

**ACGGT**ACGGGCCGCTCGAGCAGAACTCATCTCAGAAGAGGATCTGGCAGCAATGATATCCTGGATT  
ACAAGGATGACGACGATAAGGTTTAA



[View online >](#)

Protein Sequence: >RC215584 representing NM\_018988  
 Red=Cloning site Green=Tags(s)

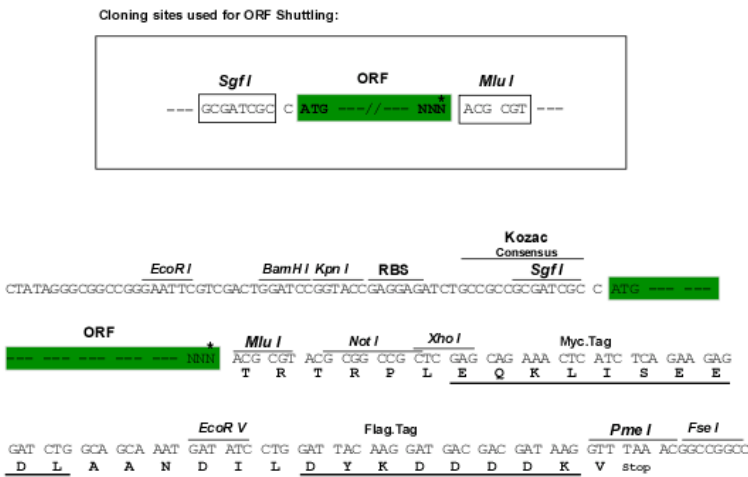
MLPGVGVFGTSL TARVIIPLLKDEGF AVKALWGRTQEEAEELAKEMSVPFYTSRIDEVLLHQDVLVCIN  
 LPPPLTRQIAVKTLGIGKNVICDRATATPLDAFRMTSAAHYYPKLMSIMGNVLRFLPAFVRMKQLIEEGYV  
 GEPLVCEVQVHGGSLGKKNWNSCDDLGGGGHLHSVGTIYIDL TFLTGQKAVKVHGLLKFVKQTDHIK  
 GIRQITSDDFC TFMVLEGGVCCTVTLNFNVPGEFKQDVTVVGSAGRLLAVGTDLYGQRNSAPEQELLVQ  
 DATPVSNSLLPEKAFSDIPSPYL RGTIKMMQAVRQAFQDQDRRTWDGRPLTMAATFDDCLYALCVVDTI  
 KRSSQTGEWQNIAIMTEPELSPAYLISEAMRRSRMSLYC

TRTRPLEQKLISEEDLAANDILDYKDDDDKV

Chromatograms: [https://cdn.origene.com/chromatograms/mk6161\\_d05.zip](https://cdn.origene.com/chromatograms/mk6161_d05.zip)

Restriction Sites: SgfI-MluI

Cloning Scheme:



\* The last codon before the Stop codon of the ORF

ACCN: NM\_018988

ORF Size: 1170 bp

OTI Disclaimer: The molecular sequence of this clone aligns with the gene accession number as a point of reference only. However, individual transcript sequences of the same gene can differ through naturally occurring variations (e.g. polymorphisms), each with its own valid existence. This clone is substantially in agreement with the reference, but a complete review of all prevailing variants is recommended prior to use. [More info](#)

OTI Annotation: This clone was engineered to express the complete ORF with an expression tag. Expression varies depending on the nature of the gene.

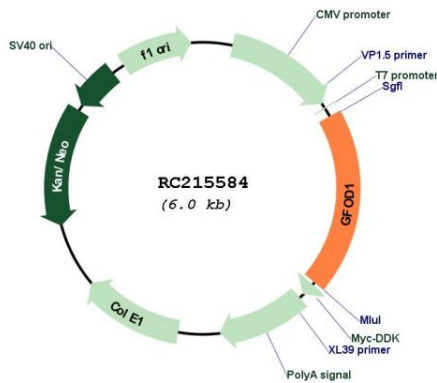
Components: The ORF clone is ion-exchange column purified and shipped in a 2D barcoded Matrix tube containing 10ug of transfection-ready, dried plasmid DNA (reconstitute with 100 ul of water).

**Reconstitution Method:**

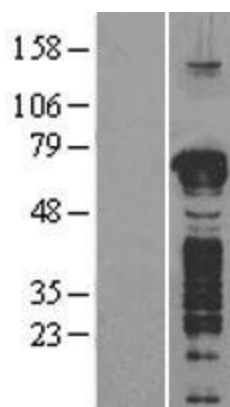
1. Centrifuge at 5,000xg for 5min.
2. Carefully open the tube and add 100ul of sterile water to dissolve the DNA.
3. Close the tube and incubate for 10 minutes at room temperature.
4. Briefly vortex the tube and then do a quick spin (less than 5000xg) to concentrate the liquid at the bottom.
5. Store the suspended plasmid at -20°C. The DNA is stable for at least one year from date of shipping when stored at -20°C.

**RefSeq:** [NM\\_018988.4](#)  
**RefSeq Size:** 3033 bp  
**RefSeq ORF:** 1173 bp  
**Locus ID:** 54438  
**UniProt ID:** [Q9NXC2](#)  
**Cytogenetics:** 6p23  
**Domains:** GFO\_IDH\_MocA, GFO\_IDH\_MocA\_C  
**MW:** 43 kDa

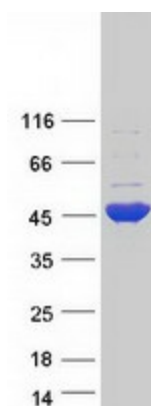
**Product images:**



Circular map for RC215584



Western blot validation of overexpression lysate (Cat# [LY402719]) using anti-DDK antibody (Cat# [TA50011-100]). Left: Cell lysates from untransfected HEK293T cells; Right: Cell lysates from HEK293T cells transfected with RC215584 using transfection reagent MegaTran 2.0 (Cat# [TT210002]).



Coomassie blue staining of purified GFOD1 protein (Cat# [TP315584]). The protein was produced from HEK293T cells transfected with GFOD1 cDNA clone (Cat# RC215584) using MegaTran 2.0 (Cat# [TT210002]).