

## Product datasheet for RC215583

### NUP210L (NM\_207308) Human Tagged ORF Clone

#### Product data:

Product Type:	Expression Plasmids
Product Name:	NUP210L (NM_207308) Human Tagged ORF Clone
Tag:	Myc-DDK
Symbol:	NUP210L
Mammalian Cell Selection:	Neomycin
Vector:	pCMV6-Entry (PS100001)
E. coli Selection:	Kanamycin (25 ug/mL)
ORF Nucleotide Sequence:	>RC215583 representing NM_207308 Red=Cloning site Blue=ORF Green=Tags(s)

TTTTGTAATACGACTCACTATAGGGCGGCCGGAATTCGTCGACTGGATCCGGTACCGAGGAGATCTGCC  
GCC**CGATCGCC**

ATGACTGGCTGTCCGGCGTCATCAAGACGCCGAGGCTTCGGGCTCTTTTTCTTCTTGCCTACACCGCC  
TCCTGTTGTTGTTTCTGGTTTTGCGTGGGACCTGGCCAAACAACTTAACGTGCCACAGGTGTTGCTACC  
CTTCGGCCGAGAGCCAGGCCGGGTGCCTTTCCTGCTGGAGGCCAGCGGGGCTGTACACTTGGCATTCC  
ACCCATCATGATGCAGTTACTGTTGAGCCTTTATGAAAAATGGCACCTGTGTTCCAAAAAGCTGTAC  
TCATTGCTGAATCTACGCAACCGATACGCCTCAGCAGTATTATTCTTGCAGAAAATAGTGACCA  
TGAGCTACGCTGTGATGTTAAGGTTGATGTGATAAACAGCATTGAAATTGTATCTCGGGCCCGGAACTT  
TATGTAGATGATTCGCCACTGGAAGTATGAGTGGGCGATTGGATGCTGAAGGAAATACTTTTGTAGT  
TGGCAGGGATGATGTTTGTAGTGGAGCATTGCCAGGACAACGAGTCAGCAAGAGAAGAACTGTCTAGCAA  
AATTAGGATTCTTAAATACTCCGAAGCAGAATATGCTCCCCAATATATAGCTGAGATGGAAAAAGAG  
GAGAAACAAGGAGATGTGATTTTGTGCTGGGATTAGAAGTGGTGTGCTGTTGTTAAAAGTTCGAATTC  
ATGAACCATTCTATAAGAAAGTGGCAGCAGCCTTAATACGTCTGCTTGTGTTGGAGAATATATTTCTTAT  
ACCATCCCATGATATTTTCTCTTAGTAGGAACATATATTAATAACCAAGTTGCAAAAATGGTTCAAGGG  
AGAGTGACAGAGGTGAAATTTCCCTGGAACATTATATACTGGAATTGCAAGACCATAGAGTTGCACTTA  
ACGGGTCTCATTCTGAGAAAGTGGCTATACTGGATGACAAAACAGCCATGGTGACTGCCTACAACCTGGG  
CCAGACTAATCTTGTCTTTGTCCATAAAAATGTTTCATATGCGATCTGTGTCTGGACTCCCAAATGCACC  
ATATATGTTGTAGAGCCTGGATTTTGTAGTTTCACTGTCCAACCTGGAACCGATGGAGTCTAGAGGTGG  
GACAGGTATATGTCATTACAGTAGAGCTTTGATAAAAAGCAGCACAAGGTCTATATTTTCAGATAATCT  
CAGGATTACATACGACTTTCCTAAGGAGTACTTTGAAGAGCAACTAACTACCGTGAATGGATCTTACCAT  
ATAGTAAAAGCCCTGAAAGATGGTGTGTGGTAATAAATGCATCCCTGACCTCCATCATTACCAGAATA  
AAGATATTCAGCCTATAAAAATTTCTAATCAAACACCAACAAGAAGTGAAGATTTATTTCCCATCATGCT  
TACACCCAAATTTCTGGCATTTCCTCATCCTATGGGAATGTTATATCGTTATAAAGTACAGGTAGAG  
GGTGGCAGTGGCAACTTACCTGGACTTCTAATGAAACAGTGGTCATAGTAAACCACGAAAGGAGTGG  
TGACTGCAGGTCAGGTCAGGGGAATAGTACTGTTTTGGCCCGAGATGTACAAAATCCCTTTTCGATATGG



[View online >](#)

AGAAATTAAGATACATGTCTGAAACTGAACAAAATGGAAGTGTACCATTTTCATGCTGATGTGGAGATT  
GGCCAGATTATAGAAATACCCATTGCAATGTATCACATAAATAAAGAGACCAAAGAAGCCATGGCATTCA  
CAGACTGCTCTCATTTATCCTTGGATCTGAACATGGATAAACAAGGAGTCTTTACTCTTCTCAAAGAAGG  
TATTCAAAGACCTGGACCAATGCATTGTTCCAGTACACATATCGCAGCTAAATCTTTGGCCATACTCTG  
GTAACAGTAAGTGTGAATGAATGTGACAAGTACTTGGAGAGCAGTGTACATTTGCTGCTTATGAACCCC  
TAAAGGCTTTAAATCCTGTGGAAGTGGCATTGGTGACATGGCAGTCTGTGAAGGAAATGGTATTTGAAGG  
GGTCCCTCGTCCATGGATCTTGGAGCCCTCCCGATTTTTTTTTGGAATTGAATGCGGAGAAGACAGAGAAG  
ATTGGAATAGCACAAAGTGTGGCTGCCATCTAAGAGAAAACAGAACCAGTACATCTACCGGATCCAATGCC  
TGGATTTAGGGGAACAAGTTCTCACATTCGAAATTGGAATCATCCAGGTGCTCTGAACCCTAGTCCAGC  
TGTAGAGGTTTTGCAGGTTTCGTTTCATTTGTGCCACCCTGCCAGTATGTCAGTAACTCCAGTATACAAG  
GTGCCAGCTGGTCCCAGCCATGCTCTGCCACAGCACAAACAAATGGCTGATTCTGTATCAAGACTGA  
GGGACACAGTCTGGAAGTACAGTGTGATCAACATAGGAGAAAGTTTGATAATTTCACTTCACTAAT  
GCTAGAATGGAATCCTCCAATGAAACACTAGCCATTTCAAGATTATAAATCAGTGGAAATGGTAGCA  
AAAGATGATGGCAGTGGCAGACCCGGTACATGGTATCAGATCCTTAAAGTACATCAGATAAAAGGGA  
CTGACTGATTGGAGTCAATTTTGTGGCTATTAGAGAAAAGCCAAAAGAAATTTCCAATTGCC  
CAGATCTGTAGATGTGGAAGTGCCTCGGTAGATGATGAACTGTAGTGCCTGAGAAATGCCACCATCTAT  
AACCACCCTGATGTAAGGAAACATTTAGCCTTGTGGAAGGATCTGGTATTTTTTGTAGTCAACAGCAGTG  
AGCAGGGTGTGTCAACATCACTTACATGGAAGCAGAAAGCTCTGTTGAGTTAGTTCCATTACATCCTGG  
ATTTTTACCTTGGAGGCTATGATCTTTGTTGGCTTCTTGGTCCAGCAACAGCCACCTCAGGGTG  
TCAGACATAACAAGAGCTGGAGCTTATCTGATTGATAAGGTTGAAATAGACAAAAGTGTGTTAGTGACTG  
TGAGGGTCTTGGCTCTTCCAAACGCCATTCCAAAATAAATACTTCAGAAACATGGAAGTCAAAGTCA  
GTTGGCTTCTGCCATTGTCACCTGACACCAATGGAGCAACAGGACGAATACTCTGAAAATATATCTT  
CGAGTACCACATTTGGCAAAACACACTTGTGGCTATTGCCAAGGACAAGATGGGAGAAAATACACAT  
CAACTCCTCGGCACATTGAAGTGTTCCTCCATTAGACTTCTTCCAGAGAAAATGACACTGATTCCAAT  
GAATATGATGCAGTAATGTCTGAAGGTGGCCCCAGCCCAATCCATCGTTCACTTCTCCATCAGTAAT  
CAGACCGTGGCTGTTGTTAATAGGAGGGGGCAAGTTACAGGGAAGATTGTTGGCAGAGTGTGGTTCATG  
GCACCATCCAGACAGTAATGAAGATACTGGCAAAGTCAATGTTTCTCAGGATGAAGTACAGATTGA  
AGTTGTTAGCTAAGGGCTGTTAGGATCCTTGCAGCTGCAACTCGGCTCATCACAGCTACCAAGTGCCA  
GTTTATGTCATGGGAGTAACAGTACCCAGACCCCTTCTCCTCAGCAATGCTAATCCTGGGCTCACAT  
TCCACTGGTCTATGAGCAAAAGGATGTATTGGATCTAGTGCCAGGCATTGAGAGGTTTTCTACAGCT  
CCCAGTAGAGCATAACTTTGCCATGGTTGCCATACAAAAGCAGCAGGCAGGACAGTATCAAGGCTCACT  
GTTCACTGCATGAACAGTTCCTCTGGGCAGTTGAGGGGAATTTGTTGGAAGTCTCTGATGAAGTACAGA  
TCCTGGTGTGTTGAAAAGTCCAAGTCTTCTATCCAGAGTGCCAACCCAGAGCAGATTCTGATGCCTATAAA  
TTCTCAGCTCAAAGTCCATACCAACAGGGAAGGAGCTGCCTTCGTGAGTTCTCGTGTTCAGTGTTC  
CCTAATTCATCCGTCATTGAGGAGGATGGTGAAGGGCTCTGAAAGCTGGTTCATTGCAGGTAAGTCTG  
TATTGGAAGTCACTTCTATAGAACCTTTGGAGTCAACCAAAACACCATAAAGTGGGTCAGGTAAGCACC  
GGTGACATACCTGCGAGTGAAGCAGCAACCAAGCTATACACAGCCCAAGGAAGGACCCTGTCAGCATT  
CCCTTGGGCATGCTCTTACCTTCACTGTTGAGTTTTATAATAGTATCGGAGAGAAAATCCACACACACA  
ATACCCAGCTTTATCTGGCTCTGAACAGAGATGACTTGTGCATATTGGACCAGGGAATAAGAACTATAC  
TTACATGGCCAGGCTGTGAACAGAGGGCTGACACTTGTGGGGCTTTGGGACCGGAGACATCCAGGCATG  
GCAGATTATATTCTGTTGCTGTAGAGCATGCCATTGAGCCAGACACCAAGCTTACCTTTGTTGGAGATA  
TCATCTGTTTCACTACTCACCTTGTGAGCCAGCATGGTGAACCTGGGATATGGATGATTTCTGCCAACAA  
TATTCTACAGACAGACATTGTCAGTGGAGTAGGAGTGGCCAGGAGTCCGGGGACTGCAATGATTTTTCAT  
GACATCCCAGGAGTAGTGAACATATCGAGAGGTGGTGGTCAATGCATCATCAAGATTAATGCTCAGTT  
ATGACCTCAAGACTTATCTACCAATACCCTCAATTCACTGTATTCAAGCTTCTCATCACCAGTGGCAG  
AAATGGTGTCAATCTAAAGGATTCTGTACCCAAACAGGCCTTGGCCATTACAAAAGTACTTCTTCCA  
GCGACCCTCATGTGTGCCATGTACAGTTCAGTAATACTTTGCTAGACATTCCAGCAAGTAAAGTCTTTC  
AGGTCCATTGAGATTTAGTATGGAGAAAGGGTTTATGCTGCATAATCAAGGTTGACCCGAGTACAG  
GGAGCTGTACAGGCCCTCAGTGTGGCTGACACCTCAGTCTATGGTGGGCTACACTGGTCAAGTGAACGT  
AGCAAGAATGGAATGCAACGAATCCTCATTCTTTTCATCCAGCCTTTTATTAACCAAGTACAGAAATGG  
TTCTTAGCCACAAAACAGATATCGGGGAGATAAGAGTACTGGGAGTGGACAGAGTTCTTAGGAAGCTAGA  
GGTCACTCCAGCTCCCAAGTCTAGTGGTTCGCTGGCCATAGCCACTCTCCCTCACTCTGGCTGGCC

ATTTACTCTGTAAGAGTGGTCAACTTCACTTCCTTCCAGCAAATGGCATCACCTGTTTTTCATCAATATTT  
 CCTGTGTACTCACCAGTCAAAGTGAGGCAGTGGTAGTGAGGGCTATGAAAGATAAGTTGGGTGCAGATCA  
 CTGTGAAGATTCCGCCATCCTCAAGCGGTTCACTGGCTTTACCAGATCTGCTCTTGACCTCTTTGCA  
 GTGCTGGCATCAACAGCTTCCATCTTCTAGCATACAATGCCTTCTTAACAAGATACAAACAGTTCCAG  
 TTGTGTATGTACCAACTTAGGAACACCACAGCCAGGTTTTTTAACTCCACAAGTTCTCCCCTCACTT  
 CATGAGTCTAACACCTCCATTGGCCCAAAGTCGGCTGCAACATTGGTTATGGAGTATAAGGCAC

ACGCGTACGCGGCCGCTCGAGCAGAACTCATCTCAGAAGAGGATCTGGCAGCAAATGATATCCTGGATT  
 ACAAGGATGACGACGATAAGGTTTAA

**Protein Sequence:**

>RC215583 representing NM\_207308  
 Red=Cloning site Green=Tags(s)

MTGCPASSRRRGFGLFFFLRLHRLLLLFLVLRGLANKLNVPQVLLPFGREPGRVPFLLEAQRGCYTWHS  
 THHDAVTVEPLYENGLCSQKAVLIAESTQPIRLSSIIILAREIVTDHELRCQVQVINSIEIVSRAREL  
 YVDDSPLELMVRALDAEGNTFSSLAGMMFEWSIAQDNESAREELSSKIRILKYSEAEYAPPIIYAEMEKE  
 EKQGDVILVSGIRTGAADVVKVRIHEPFYKVAALIRLLVLENIFLIPSHDIYLLVGTIYKYQVAKMVQG  
 RVTEVKFPLEHYILELQDHRVALNGSHSEKVAIILDDKTAMVTASQLGQTNL VVHKNVHMRSVSGLPNCT  
 IYVVEPGFLGFTVQPGNRWSLEVGQVYVITVDVFDKSSTKVYISDNLRTIYDFPKEYFEEQLTTVNGSYH  
 IVKALDKGVVINASLTSIIYQNKDIQPIKFLIKHQQEVKIYFPIMLTPKFLAFPHHPMGLYRYKQVE  
 GSGNFTWTSNETVVIITTKGVVTAGQVRGNSTVLARDVQNPFRYGEIKIHVCLKNKMELLPFHADVEI  
 GQIEIPIAMYHINKETKEAMAFDCHLSLDLNMMDKQGVFTLLKEGIQRPGPMHCSSTHIAAKSLGHTL  
 VTVSVNECDKYLESSATFAAYEPLKALNPVEVALVTWQSVKEMVFEQGGPRPWILEPSRFFLELNAEKTEK  
 IGIAQVWLPSCRKQNYIYRIQCLDLGEQVLTFRIGNHPGVLNPSPAVEVLQVRFICAHPASMSVTPVYK  
 VPAGAQCPLPQHKNKWLIPVSRRLRDTVLELAVFDQHRKFDNFSSLMLEWKSSNETLAHFEDYKSVEMVA  
 KDDGSGQTRLHGHIKLVHQIKGTVLIGVNFVGYSEKSPKEISNLPRSDVVELLLVDDVTVPENATIY  
 NHPDVKETFSLVEGSGYFLVNSSEQGVVITYMEAESSVELVPLHPGFFTLLEVYDLCLAFPGATAHLRV  
 SDIQELEDLIDKVEIDKTVLVTVRVLGSSKRPFNKYFRNEMELKLQLASAIVTLTPMEQQDEYSENYIL  
 RATTIGQTTLVAIAKDKMGRKYTSTPRHIEVFPFRLPEKMTLIPMNMVMSEGGPQPSIVHFSISN  
 QTVAVVNRGQVTGKIVGTAVVHGTIQTVNEDTGKVI VFSQDEVQIEVVQLRAVRILAAATRLITATKMP  
 VYVMGVTSTQTPFSFANANPGLTFHWSMSKRDLVLDL VPRHSEVFLQLPVEHNFAMVVHTKAAGRTS  
 IKVT  
 YHCMNSSSGQFEGNLEL SDEVQILVFEKLQLFYPECQPEQILMPINSQLKLHTNREGAAFVSSRVLKCF  
 PNSSVIEEDGEGLLKAGSIAGTAVLEVTSIEPFGVNQTTITGVQVAPVTYLRVSSQPKLYTAQGRTL  
 SAF  
 PLGMSLTFTVQFYNSIGEFHTHTNTQLYLALNRDILLHIGPGNKNYTYMAQAVNRGLTLVGLWDRRH  
 PGM  
 ADYIPVAVEHAIEPDTKLT FVGDIIICFSTHLVSQHGEPGIWMSANNILQTDIVTGVGVARS  
 PGTAMIFH  
 DIPGVVKTREVVVNASSRMLSYDLKTYLTNTLNSTVFKLFIITGRNGVNLKGFCTPNQALAITK  
 VLLP  
 ATLMMLCHVQFSNTLLDIPASKVFQVHSDFSMEKGVYVCIKVRPQSEELLQALSVADTSVYGWATL  
 VSER  
 SKNGMQRILIPFIPAFYINQSELVLSHKQDIGEIRVLGVDRVLRKLEVISSSPVLV VAGHSHS  
 PLTPGLA  
 IYSVRVVNFTSFQMASPVFINISCVLTSQSEAVVVRAMKDKLGADHCEDSAILKRFTGSYQIL  
 LLLTLFA  
 VLASTASIFLAYNAFLNKIQTVPVVVPTLGTQPQGFNSTSSPPHFMSLQPPLAQSQLQHWLWSIRH

TRTRPLEQKLI SEEDLAANDILDYKDDDDKV

**Chromatograms:**

[https://cdn.origene.com/chromatograms/mk8014\\_b07.zip](https://cdn.origene.com/chromatograms/mk8014_b07.zip)

**Restriction Sites:**

Sgfl-MluI

Cloning Scheme:



ACCN: NM\_207308

ORF Size: 5664 bp

OTI Disclaimer: The molecular sequence of this clone aligns with the gene accession number as a point of reference only. However, individual transcript sequences of the same gene can differ through naturally occurring variations (e.g. polymorphisms), each with its own valid existence. This clone is substantially in agreement with the reference, but a complete review of all prevailing variants is recommended prior to use. [More info](#)

OTI Annotation: This clone was engineered to express the complete ORF with an expression tag. Expression varies depending on the nature of the gene.

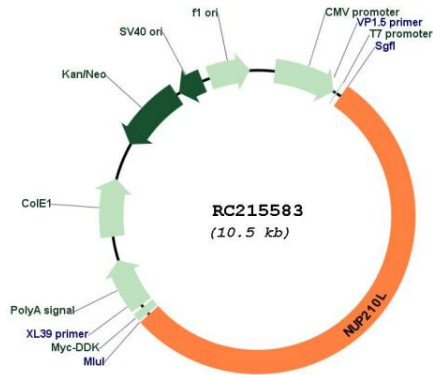
Components: The ORF clone is ion-exchange column purified and shipped in a 2D barcoded Matrix tube containing 10ug of transfection-ready, dried plasmid DNA (reconstitute with 100 ul of water).

- Reconstitution Method:
1. Centrifuge at 5,000xg for 5min.
  2. Carefully open the tube and add 100ul of sterile water to dissolve the DNA.
  3. Close the tube and incubate for 10 minutes at room temperature.
  4. Briefly vortex the tube and then do a quick spin (less than 5000xg) to concentrate the liquid at the bottom.
  5. Store the suspended plasmid at -20°C. The DNA is stable for at least one year from date of shipping when stored at -20°C.

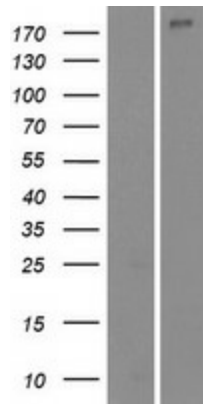
RefSeq: [NM\\_207308.2](#), [NP\\_997191.2](#)

RefSeq Size: 5913 bp  
 RefSeq ORF: 5667 bp  
 Locus ID: 91181  
 UniProt ID: [Q5VU65](#)  
 Cytogenetics: 1q21.3  
 Protein Families: Transmembrane  
 MW: 210.4 kDa

**Product images:**



Circular map for RC215583



Western blot validation of overexpression lysate (Cat# [LY404087]) using anti-DDK antibody (Cat# [TA50011-100]). Left: Cell lysates from untransfected HEK293T cells; Right: Cell lysates from HEK293T cells transfected with RC215583 using transfection reagent MegaTran 2.0 (Cat# [TT210002]).