

## Product datasheet for RC215582

### AMELX (NM\_182680) Human Tagged ORF Clone

#### Product data:

**Product Type:** Expression Plasmids  
**Product Name:** AMELX (NM\_182680) Human Tagged ORF Clone  
**Tag:** Myc-DDK  
**Symbol:** AMELX  
**Synonyms:** AI1E; AIH1; ALGN; AMG; AMGL; AMGX  
**Mammalian Cell Selection:** Neomycin  
**Vector:** pCMV6-Entry (PS100001)  
**E. coli Selection:** Kanamycin (25 ug/mL)  
**ORF Nucleotide Sequence:** >RC215582 representing NM\_182680  
 Red=Cloning site Blue=ORF Green=Tags(s)

TTTTGTAATACGACTCACTATAGGGCGGCCGGAATTCGTCGACTGGATCCGGTACCGAGGAGATCTGCC  
 GCC**CGATCGCC**

ATGGGGACCTGGATTTTATTTGCCTGCCTCCTGGGAGCAGCTTTTGCCATGCCTCTACCACCTCATCCTG  
 GGCACCCTGGTTATATCAACTTCAGCTATGAGAACTCACATTCTCAGGCTATCAATGTTGACAGGACTGC  
 ATTAGTGCTTACCCTTTGAAGTGGTACCAGAGCATAAGGCCACCGTACCCTTCTATGGTTACGAGCCC  
 ATGGGTGGATGGCTGCACCACCAATCATCCCCGTGCTGTCCCAACAGCACCCCCGACTCACACCCTGC  
 AGCCTCATCACCACATCCCAGTGGTCCAGCTCAGCAGCCGTGATCCCCAGCAACCAATGATGCCCGT  
 TCCTGGCCAACACTCCATGACTCCAATCCAACACCACCAGCCAAACCTCCCTCCGCCGCCAGCAGCCC  
 TACCAGCCCCAGCCTGTTTCAGCCACAGCCTCACCAGCCATGCAGCCCCAGCCACCTGTGCACCCCATGC  
 AGCCCCCTGCCGCCACAGCCACCTCTGCCTCCGATGTTCCCATGCAGCCCCTGCCTCCCATGCTTCTCTGA  
 TCTGACTCTGGAAGCTTGCCATCAACAGACAAGACCAAGCGGGAGGAAGTGGAT

**ACGCGT**ACGCGGCCGCTCGAGCAGAACTCATCTCAGAAGAGGATCTGGCAGCAAATGATATCCTGGATT  
 ACAAGGATGACGACGATAAGGTTTAA

**Protein Sequence:** >RC215582 representing NM\_182680  
 Red=Cloning site Green=Tags(s)

MGTWILFACLLGAAFAMPLPPHPGHPGYINFSYENSHSQAINVDRTALVLTPLKQWYSIRPPYPSPYGYEP  
 MGGWLHHQIIPVLSQQHPPTHTLQPHHHIPVVPAQQPVIQQPMPVPGQHSMTPIQHHQPNLPPPAQQP  
 YQFPVQVQPHQPMQPPVHPMQPLPPQPPLPFMPQPLPMLPDLTLEAWPSTDKTKREEVD

**TRTRPLEQKLI**SEEDLAANDILDYKDDDDKV



[View online »](#)



**Reconstitution Method:**

1. Centrifuge at 5,000xg for 5min.
2. Carefully open the tube and add 100ul of sterile water to dissolve the DNA.
3. Close the tube and incubate for 10 minutes at room temperature.
4. Briefly vortex the tube and then do a quick spin (less than 5000xg) to concentrate the liquid at the bottom.
5. Store the suspended plasmid at -20°C. The DNA is stable for at least one year from date of shipping when stored at -20°C.

**Note:** Plasmids are not sterile. For experiments where strict sterility is required, filtration with 0.22um filter is required.

**RefSeq:** [NM\\_182680.1](#), [NP\\_872621.1](#)

**RefSeq Size:** 835 bp

**RefSeq ORF:** 618 bp

**Locus ID:** 265

**UniProt ID:** [Q99217](#)

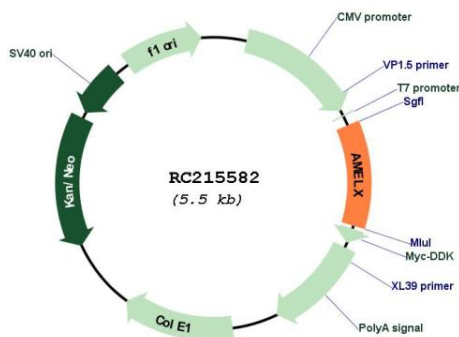
**Cytogenetics:** Xp22.2

**Protein Families:** Druggable Genome, Secreted Protein, Transmembrane

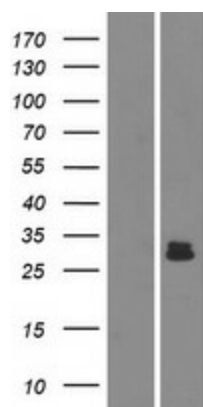
**MW:** 21.4 kDa

**Gene Summary:** This gene encodes a member of the amelogenin family of extracellular matrix proteins. Amelogenins are involved in biomineralization during tooth enamel development. Mutations in this gene cause X-linked amelogenesis imperfecta. Alternative splicing results in multiple transcript variants encoding different isoforms. [provided by RefSeq, Jul 2008]

### Product images:



Circular map for RC215582



Western blot validation of overexpression lysate (Cat# [LY405445]) using anti-DDK antibody (Cat# [TA50011-100]). Left: Cell lysates from untransfected HEK293T cells; Right: Cell lysates from HEK293T cells transfected with RC215582 using transfection reagent MegaTran 2.0 (Cat# [TT210002]).