

Product datasheet for **RC215572**

SLC27A6 (NM_001017372) Human Tagged ORF Clone

Product data:

Product Type:	Expression Plasmids
Product Name:	SLC27A6 (NM_001017372) Human Tagged ORF Clone
Tag:	Myc-DDK
Symbol:	SLC27A6
Synonyms:	ACSVL2; FACVL2; FATP6; VLCS-H1
Mammalian Cell Selection:	Neomycin
Vector:	pCMV6-Entry (PS100001)
E. coli Selection:	Kanamycin (25 ug/mL)



[View online »](#)

ORF Nucleotide Sequence:

>RC215572 ORF sequence
 Red=Cloning site Blue=ORF Green=Tags(s)

TTTTGTAATACGACTCACTATAGGGCGGCCGGAATTCGTCGACTGGATCCGGTACCGAGGAGATCTGCC
 GCC**CGCATCGCC**

ATGCTTCTGTCATGGCTAACAGTTCTAGGGGCTGGAATGGTCGCTCTGCACTTCGTGCAGAACTCCTGT
 TCACCTACTTTTGGGATGACTTCTGGTTCTGTGTTGAAGGTGGTGCTCATTATAATTCGGCTGAAGAAGTA
 CGAAAAGAGAGGGGAGCTGGTACTGTGCTGGATAAATCTTGAGTCATGCCAAAAGACAACCTCGGAAA
 CCTTTCATCATCTATGAGGGAGACATCTACACCTATCAGGATGTAGACAAAAGGAGCAGCAGAGTGGCCC
 ATGTCTTCTGAACCATTCCTCTCTGAAAAGGGGACACGGTGGCTCTGCTGATGAGCAATGAGCCGGA
 CTTGTTACGTTGGTTCGGCCTCGCCAAGCTGGGCTGCGTGGTGGCCTTTCTCAACACCAACATTGCG
 TCCAACCTCCTCGAATTGCATCCGCGCTGTGGGCCAGAGCCCTAGTGGTGGCGCAGATTTGCTTG
 GGACGGTAGAAGAAATCCTTCCAAGCCTCTCAGAAAATATCAGTGTGGGGGATGAAAGATTCTGTTCC
 ACAAGGTGAATTCACCTCAAAGAAAACTGAGCACCTCACCTGATGAGCCCGTCCACGCAGCCACCAT
 GTTGTCTCACTCATCAAGTCTACTTGTCTTTACATTTTTACCTCTGGAACACAGGTCTACCAAAAGCAG
 CTGTGATTAGTCAGCTGCAGTTTTAAGGGTTCTGCTGTCTGTGGGCTTTTGGTTGACTGCTCATGA
 CATTGTTTATATAACCTTCTCTGTATCATAGTTCAGCAGCTATCCTGGGAATTTCTGGATGTGTTGAG
 TTGGGTGCCACTTGTGTGTTAAGAAGAAATTTTCAGCAAGCCAGTTTTGGAGTGACTGCAAGAAGTATG
 ATGTGACTGTGTTTCAGTATATTGGAGAAGTGTGCTACCTTTGCAACAATCTAAGAGAGAAGGAGA
 AAAGGATCATAAGGTGCGTTTGGCAATTGGAATGGCATACGGAGTGATGATGGAGAGAATTTTAGAC
 AGATTTGGAATATAAAGGTGTGTAACCTTTATGCAGCTACCGAATCAAGCATATCTTTCATGAACATA
 CTGGGAGAATTGGAGCAATTGGGAGAACAATTTGTTTTACAACTTCTTCCACTTTTGACTTAATAAA
 GTATGACTTTTCAGAAAGATGAACCCATGAGAAAATGAGCAGGGTTGGTGTATTCATGTGAAAAAGGAGAA
 CCTGGACTTCTATTTCTCGAGTGAATGCAAAAAATCCCTTCTTTGGCTATGCTGGGCCTTATAAGCACA
 CAAAAGACAAATTGCTTTGTGATGTTTTAAGAAGGGAGATGTTACCTTAATACTGGAGACTTAATAGT
 CCAGGATCAGGACAATTTCTTTATTTTGGGACCGTACTGGAGACACTTTCAGATGAAAAGGAGAAAAAT
 GTCGCAACCACTGAGGTTGCTGATGTTATTGGAATGTTGGATTTCATACAGGAAGCAAACGCTATGGTG
 TGGCTATATCAGGTTATGAAGGAAGAGCAGGAATGGCTTCTATTATTTAAAACCAATACATCTTTAGA
 TTTGAAAAAGTTTATGAACAAGTTGTAACTTTCTACCAGCTTATGCTTGCCACGATTTTAAAGATT
 CAGGAAAAAATGGAAGCAACAGGAACATTCAAACCTATTGAAGCATCAGTTGGTGGAGATGGATTTAATC
 CACTGAAAAATTTCTGAACCACTTACTTTCATGGATAACTTAAAAAGTCTTATGTTCTACTGACCAGGGA
 ACTTTATGATCAATAATGTTAGGGGAAATAAACTT

ACGCGTACGCGGCCGCTCGAGCAGAACTCATCTCAGAAGAGGATCTGGCAGCAATGATATCCTGGATT
 ACAAGGATGACGACGATAAGGTTTAA

Protein Sequence:

>RC215572 protein sequence
 Red=Cloning site Green=Tags(s)

MLLSWLTVLGAGMVLHFVQKLLFTYFWDFFVFLKVVLIIRLKKYEKRGELVTVLDFKFLSHAKRQPRK
 PFIIEYEGDIYTYQDVKRSSRVAVHFLNHSSLKKGDTVALLMSNEPDFVHVWFGLAKLGCVVAFLNTNIR
 SNSLLNCIRACGPRALVVGADLLGTVEEILPSLSENI SVWGMKDSVPQGVISLKEKLTSPDEPVPRSHH
 VVSLIKSTCLYIFTSGTTGLPKAAVISQLQVLRGS AVLWAFGCTAHDIVYITLPL YHSSAAILGISGCV
 LGATCVLKKKFSASQFWS DCKKYDVTVFQYIGELCRYLCKQSKREGEKDHKVR LAIGNGIRSDVWREFLD
 RFGNIKVCELYAATESISFMNYTGRIGAIGRTNLFYKLLSTFDLIKDYDFQKDEPMRNEQGWCIHVKKGE
 PGLLISRVAKNPFFGYAGPYKHTKDKLLCDVFKKGDVYLN TGDLIVQDQDNFLYFWDRTGDTFRWKGEN
 VATTEVADVIGMLDFIQEANVYGV AISGYEGRAGMASIILKPNTSLDLEKVVYEQVVTFLPAYACPRFLRI
 QEKMEATGTFKLLKHQLVEDGFNPKISEPL YFMDNLKKS YVLLTREL YDQIMLGEIKL

TRTRPLEQKLISEEDLAANDILDYKDDDDKV

Chromatograms: https://cdn.origene.com/chromatograms/mk6514_e09.zip
 Restriction Sites: SgfI-MluI
 Cloning Scheme:



ACCN: NM_001017372

ORF Size: 1857 bp

OTI Disclaimer: The molecular sequence of this clone aligns with the gene accession number as a point of reference only. However, individual transcript sequences of the same gene can differ through naturally occurring variations (e.g. polymorphisms), each with its own valid existence. This clone is substantially in agreement with the reference, but a complete review of all prevailing variants is recommended prior to use. [More info](#)

OTI Annotation: This clone was engineered to express the complete ORF with an expression tag. Expression varies depending on the nature of the gene.

Components: The ORF clone is ion-exchange column purified and shipped in a 2D barcoded Matrix tube containing 10ug of transfection-ready, dried plasmid DNA (reconstitute with 100 ul of water).

- Reconstitution Method:
1. Centrifuge at 5,000xg for 5min.
 2. Carefully open the tube and add 100ul of sterile water to dissolve the DNA.
 3. Close the tube and incubate for 10 minutes at room temperature.
 4. Briefly vortex the tube and then do a quick spin (less than 5000xg) to concentrate the liquid at the bottom.
 5. Store the suspended plasmid at -20°C. The DNA is stable for at least one year from date of shipping when stored at -20°C.

RefSeq: [NM_001017372.3](#)

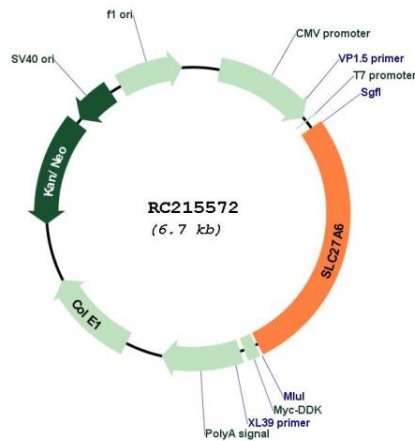
RefSeq Size: 2839 bp

RefSeq ORF: 1860 bp

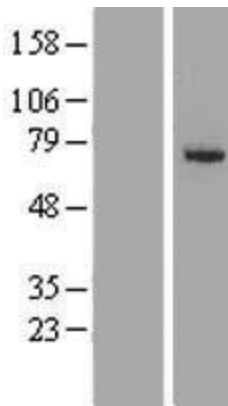
Locus ID: 28965
 UniProt ID: [Q9Y2P4](#)
 Cytogenetics: 5q23.3
 Protein Pathways: PPAR signaling pathway
 MW: 70.1 kDa

Gene Summary: This gene encodes a member of the fatty acid transport protein family (FATP). FATPs are involved in the uptake of long-chain fatty acids and have unique expression patterns. Alternatively spliced transcript variants encoding the same protein have been found for this gene. [provided by RefSeq, Jul 2008]

Product images:



Circular map for RC215572



Western blot validation of overexpression lysate (Cat# [LY422766]) using anti-DDK antibody (Cat# [TA50011-100]). Left: Cell lysates from untransfected HEK293T cells; Right: Cell lysates from HEK293T cells transfected with RC215572 using transfection reagent MegaTran 2.0 (Cat# [TT210002]).