

## Product datasheet for RC215571

### Annexin A13 (ANXA13) (NM\_001003954) Human Tagged ORF Clone

#### Product data:

Product Type:	Expression Plasmids
Product Name:	Annexin A13 (ANXA13) (NM_001003954) Human Tagged ORF Clone
Tag:	Myc-DDK
Symbol:	Annexin A13
Synonyms:	ANX13; ISA
Mammalian Cell Selection:	Neomycin
Vector:	pCMV6-Entry (PS100001)
E. coli Selection:	Kanamycin (25 ug/mL)
ORF Nucleotide Sequence:	>RC215571 representing NM_001003954 Red=Cloning site Blue=ORF Green=Tags(s)

TTTTGTAATACGACTCACTATAGGGCGGCCGGAATTCGTCGACTGGATCCGGTACCGAGGAGATCTGCC  
GCC**CGATCGCC**

ATGGGCAATCGTCATAGCCAGTCGTACACCCTCTCAGAAGGCAGTCAACAGTTGCCTAAAGGGGACTCCC  
AACCCTCGACAGTCGTGCAGCCTCTCAGCCACCCATCACGGAATGGAGAGCCAGAGGCCCCACAGCCTGC  
TAAAGCGAGCAGTCCTCAGGGTTTTGATGTGGATCGAGATGCCAAAAAGCTGAACAAAGCCTGCAAAGGA  
ATGGGGACCAATGAAGCAGCCATCATTGAAATCTTATCGGGCAGGACATCAGATGAGAGGCAACAAATCA  
AGCAAAAGTACAAGGCAACGTACGGCAAGGAGCTGGAGGAAGTACTCAAGAGTGAGCTGAGTGAAACTT  
CGAGAAGACAGCGTTGGCCCTTCTGGACCGTCCCAGCGAGTACGCCGCCGCGCAGCTGCAGAAGGCTATG  
AAGGGTCTGGGCACAGATGAGTCCGTCCTCATTGAGGTCCTGTGCACGAGGACCAATAAGGAAATCATCG  
CCATTAAGAGGGCTACCAAAGGCTATTTGATAGGAGCCTCGAATCAGATGTCAAAGGTGATACAAGTGG  
AAACCTAAAAAATCCTGGTGTCTCTGCTGCAGGCTAATCGCAATGAAGGAGATGACGTGGACAAAGAT  
CTAGCTGGTCAGGATGCCAAGATCTGTATGATGCAGGGGAAGGCCGCTGGGGCACTGATGAGCTTGCGT  
TCAATGAAGTCTGGCCAAGAGGAGCTACAAGCAGTTACGAGCCACCTTTCAAGCCTATCAAATTCAT  
TGGCAAAGACATAGAAGAAGCCATTGAAGAAGAAACATCAGGCCGACTTGCAGAAGGCCTATTTAACTCTC  
GTGAGATGTGCCAGGATTGTGAGGACTATTTTGTGACGCTGTACAAGTCTGTAAGGTTGCCGGGAA  
CCGATGAGGAGACGTTGATTTCGCATAGTCGTGACCAGGGCCGAGGTGGACCTTCAGGGGATCAAAGCAAA  
GTTCCAAGAGAAGTATCAGAAGTCTCTCTGACATGGTTCGCTCAGATACCTCCGGGGACTTCCGGAAA  
CTGCTAGTAGCCCTCTTGAC

**ACGCGT**ACGCGGCCGCTCGAGCAGAAACTCATCTCAGAAGAGGATCTGGCAGCAATGATATCCTGGATT  
ACAAGGATGACGACGATAAGGTTAA



[View online »](#)

**Protein Sequence:** >RC215571 representing NM\_001003954  
Red=Cloning site Green=Tags(s)

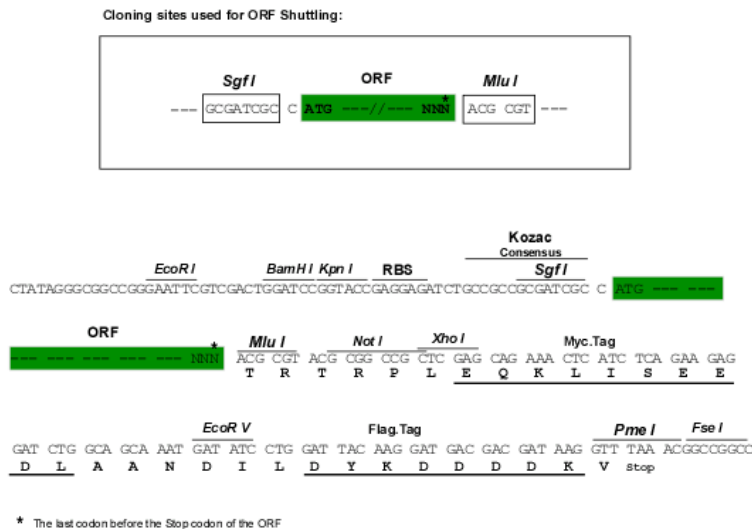
MGNRHSQSYTLSEGSQQLPKGDSQPSTVVQPLSHPSRNGEPEAPQPAKASSPQGFVDVDRDAKLNKACKG  
 MGTNEAAIEIILSGRTSDERQQIKQKYKATYKLEEEVLKSELSGNFETALALLDRPSEYARQLQKAM  
 KGLGTDESVLIEVLCTRTRNKEIIAIKEAYQRLFDRSLESVKGDTSGNLKKILVSLQLQANRNEGDDVDKD  
 LAGQDAKDLYDAGEGRWGTDELAFNEVLAKRSYKQLRATFQAYQILIGKDIEEAIEEETSGLDQKAYLTL  
 VRCAQDCEDYFAERLYKSMKGAGTDEETLIRIVVTRAEVDLQGIKAKFQEKYQKSLSDMVRSDTSGDFRK  
 LLVALLH

TRTRPLEQKLISEEDLAANDILDYKDDDDKV

**Chromatograms:** [https://cdn.origene.com/chromatograms/mk8054\\_b08.zip](https://cdn.origene.com/chromatograms/mk8054_b08.zip)

**Restriction Sites:** SgfI-MluI

**Cloning Scheme:**



**ACCN:** NM\_001003954

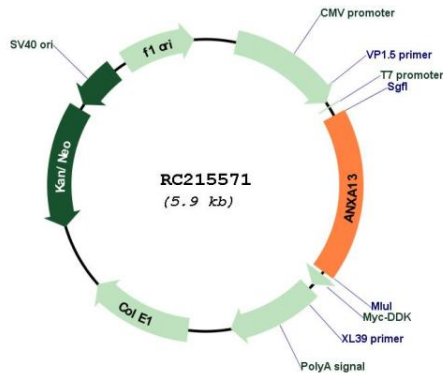
**ORF Size:** 1071 bp

**OTI Disclaimer:** Due to the inherent nature of this plasmid, standard methods to replicate additional amounts of DNA in E. coli are highly likely to result in mutations and/or rearrangements. Therefore, OriGene does not guarantee the capability to replicate this plasmid DNA. Additional amounts of DNA can be purchased from OriGene with batch-specific, full-sequence verification at a reduced cost. Please contact our customer care team at [custsupport@origene.com](mailto:custsupport@origene.com) or by calling 301.340.3188 option 3 for pricing and delivery.

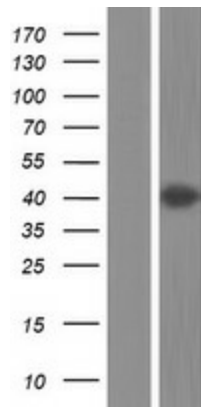
The molecular sequence of this clone aligns with the gene accession number as a point of reference only. However, individual transcript sequences of the same gene can differ through naturally occurring variations (e.g. polymorphisms), each with its own valid existence. This clone is substantially in agreement with the reference, but a complete review of all prevailing variants is recommended prior to use. [More info](#)

<b>OTI Annotation:</b>	This clone was engineered to express the complete ORF with an expression tag. Expression varies depending on the nature of the gene.
<b>Components:</b>	The ORF clone is ion-exchange column purified and shipped in a 2D barcoded Matrix tube containing 10ug of transfection-ready, dried plasmid DNA (reconstitute with 100 ul of water).
<b>Reconstitution Method:</b>	<ol style="list-style-type: none"><li>1. Centrifuge at 5,000xg for 5min.</li><li>2. Carefully open the tube and add 100ul of sterile water to dissolve the DNA.</li><li>3. Close the tube and incubate for 10 minutes at room temperature.</li><li>4. Briefly vortex the tube and then do a quick spin (less than 5000xg) to concentrate the liquid at the bottom.</li><li>5. Store the suspended plasmid at -20°C. The DNA is stable for at least one year from date of shipping when stored at -20°C.</li></ol>
<b>RefSeq:</b>	<a href="#">NM_001003954.3</a>
<b>RefSeq Size:</b>	1609 bp
<b>RefSeq ORF:</b>	1074 bp
<b>Locus ID:</b>	312
<b>UniProt ID:</b>	<a href="#">P27216</a>
<b>Cytogenetics:</b>	8q24.13
<b>MW:</b>	39.6 kDa
<b>Gene Summary:</b>	This gene encodes a member of the annexin family. Members of this calcium-dependent phospholipid-binding protein family play a role in the regulation of cellular growth and in signal transduction pathways. The specific function of this gene has not yet been determined; however, it is associated with the plasma membrane of undifferentiated, proliferating endothelial cells and differentiated villus enterocytes. Alternatively spliced transcript variants encoding different isoforms have been identified. [provided by RefSeq, Jul 2008]

Product images:



Circular map for RC215571



Western blot validation of overexpression lysate (Cat# [LY424045]) using anti-DDK antibody (Cat# [TA50011-100]). Left: Cell lysates from untransfected HEK293T cells; Right: Cell lysates from HEK293T cells transfected with RC215571 using transfection reagent MegaTran 2.0 (Cat# [TT210002]).