

## Product datasheet for **RC215562L3V**

### CD8B (NM\_172213) Human Tagged ORF Clone Lentiviral Particle

#### Product data:

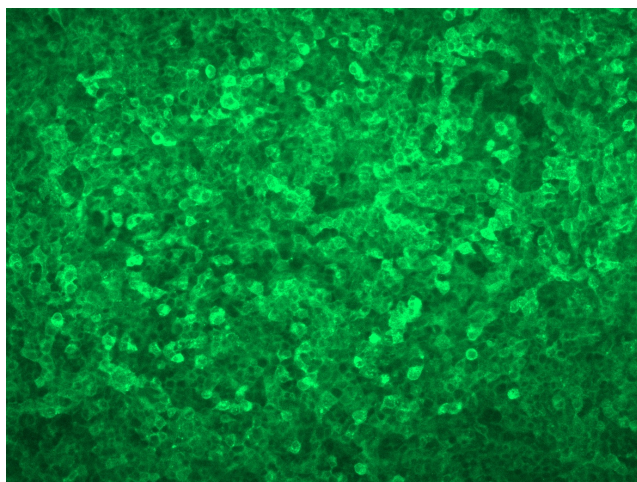
Product Type:	Lentiviral Particles
Product Name:	CD8B (NM_172213) Human Tagged ORF Clone Lentiviral Particle
Symbol:	CD8B
Synonyms:	CD8B1; LEU2; LY3; LYT3; P37
Mammalian Cell Selection:	Puromycin
Vector:	pLenti-C-Myc-DDK-P2A-Puro (PS100092)
Tag:	Myc-DDK
ACCN:	NM_172213
ORF Size:	729 bp
ORF Nucleotide Sequence:	The ORF insert of this clone is exactly the same as(RC215562).
OTI Disclaimer:	The molecular sequence of this clone aligns with the gene accession number as a point of reference only. However, individual transcript sequences of the same gene can differ through naturally occurring variations (e.g. polymorphisms), each with its own valid existence. This clone is substantially in agreement with the reference, but a complete review of all prevailing variants is recommended prior to use. <a href="#">More info</a>
OTI Annotation:	This clone was engineered to express the complete ORF with an expression tag. Expression varies depending on the nature of the gene.
RefSeq:	<a href="#">NM_172213.1</a> , <a href="#">NP_757362.1</a>
RefSeq Size:	1071 bp
RefSeq ORF:	732 bp
Locus ID:	926
UniProt ID:	<a href="#">P10966</a>
Cytogenetics:	2p11.2
Protein Families:	Druggable Genome, Secreted Protein, Transmembrane



[View online »](#)

<b>Protein Pathways:</b>	Antigen processing and presentation, Cell adhesion molecules (CAMs), Hematopoietic cell lineage, Primary immunodeficiency, T cell receptor signaling pathway
<b>MW:</b>	27.2 kDa
<b>Gene Summary:</b>	The CD8 antigen is a cell surface glycoprotein found on most cytotoxic T lymphocytes that mediates efficient cell-cell interactions within the immune system. The CD8 antigen, acting as a coreceptor, and the T-cell receptor on the T lymphocyte recognize antigens displayed by an antigen presenting cell (APC) in the context of class I MHC molecules. The functional coreceptor is either a homodimer composed of two alpha chains, or a heterodimer composed of one alpha and one beta chain. Both alpha and beta chains share significant homology to immunoglobulin variable light chains. This gene encodes the CD8 beta chain isoforms. Multiple alternatively spliced transcript variants encoding distinct membrane associated or secreted isoforms have been described. A pseudogene, also located on chromosome 2, has been identified. [provided by RefSeq, May 2010]

### Product images:



[RC215562L3] was used to prepare Lentiviral particles using [TR30037] packaging kit. HEK293T cells were transduced with RC215562L3V particle to overexpress human CD8B-Myc-DDK fusion protein.