

Product datasheet for **RC215557**

DACT1 (NM_001079520) Human Tagged ORF Clone

Product data:

Product Type:	Expression Plasmids
Product Name:	DACT1 (NM_001079520) Human Tagged ORF Clone
Tag:	Myc-DDK
Symbol:	DACT1
Synonyms:	DAPPER; DAPPER1; DPR1; FRODO; HDPR1; TBS2; THYEX3
Mammalian Cell Selection:	Neomycin
Vector:	pCMV6-Entry (PS100001)
E. coli Selection:	Kanamycin (25 ug/mL)



[View online »](#)

ORF Nucleotide Sequence:

>RC215557 representing NM_001079520
 Red=Cloning site Blue=ORF Green=Tags(s)

TTTTGTAATACGACTCACTATAGGGCGGCCGGGAATTCGTCGACTGGATCCGGTACCGAGGAGATCTGCC
 GCC**CGCATCGCC**

ATGAAGCCGAGTCCGGCCGGGACGGCGAAGGAGCTGGAGCCTCCGGCCCGGCCAGGCGAGCAGCGCA
 CGGCGGAGCCCGAGGGGCGCTGGCGGGAGAAGGGCGAGGCAGACACCGAGCGGCAGCGCACCCGGGAGCG
 GCAGGAGGCCACGCTGGCCGGGCTGGCGGAGCTGGAGTACCTGCGCCAGCGCCAAGAGCTGCTGGTCAGG
 GGCGCCCTGCGCGGGCGCCGGGGTGGCGGAGCCGCTGCGCCCCGCGCTGGGGAGCTACTGGGGGAGGCGG
 CGCAGCGCAGTCGCTGGAGGAGAAGTTCTGGAGGAGAACATCTTGTGCTAAGAAAGCAATTGAAGT
 TTTGAGGCGAAGAGATGCTGGTTTGTGAATCAGTTGCAAGAGCTTGACAAGCAGATAAGTGACCTGAGA
 CTGGATGTAGAAAAGACATCTGAAGAGCACCTGGAGACAGACAGTCGGCCTAGCTCAGGGTTTTATGAGC
 TGAGTGATGGGGTTCAGGATCCCTTTCCAATTCTCTAACTCGGTGTTTCAGTGAGTGTTATCCAGTTG
 TCATTCCAGCACCTGCTTTTGCAGCCCCCTGGAGGCGACCTTGAGTCTCTCAGATGGTTGCCCAAATCT
 GCAGATGTGAATCCCAAGTACCAGTGTGATCTGGTGTCTAAAAACGGGAATGATGTATATCGCTATCCCA
 GTCCACTTCATGCTGTGGCTGTGCAGAGCCCAATGTTTCTCCTTTGTCTGACGGGCAACCCTCTGAGGGA
 AGAGGACAGGCTTGAAACCATGCCAGTGACATTTGCGGTGGATCTGAGCTAGATGCCGTAAAACAGAC
 AGTTCTTACCCTCCCAAGCAGTCTGTGGTCTGCTTCCCATCCTTATCCAGCAAGAAAATGGATGGCT
 ACATTCTGAGCCTGGTCCAGAAAAAACACACCCTGTAAGGACCAACAACCAAGAACCAGCGTGAACGC
 TGACCCACGAAAGGGCTTCTGAGGAACGGGAGCGTTTGTGTGAGAGCCCGGGCGGTGTCTCACAGGGC
 AACAGTGTGAACCTTAAGAATTCGAAACAGGCGTGTCTGCCCTTGCGGGGATACCTTCTCTGAACAATG
 GGACATTTCCCAACCGAAGCAGTGGTCGAAAGAATCAAAGGCCGAACAAGCCGAAAGCAGGGGTGCC
 CCTGCCAGAGGGCTGCCCTCAGGCGCTGCCCTCCGACCTTCAGAGTAAGCACCTGCCAAAAACGGCCAAG
 CCAGCCTCGAAGAACATGCTCGGTGTTCCGCCATTGGGACAGGGGAGTCCCTAAGGAAAAGCGCTCAGC
 TCTCAGGGCCTCTCAAAGAGAGTCTAGCAGAGGCCCTGCCCGCCGAGGAGAACAAGTTGTACA
 GCCCTGAAAAAGATGTACAGAAAAACAGCCTGCAGGGCGTCCCCCGGCCACTCTCCCTGTGTCT
 ACAGCTTTCCCGTGGAAGAGAGGCTGCCTGGATTTCAAGAGCGAGGGCTCTTCCCAAAGCCTGGAGG
 AAGCGCACCTGGTCAAGGCCAGTTTATCCCGGGCAGCAGCCAGTGTGAGGCTCCACCGGGGCCACAG
 GAACATGGGCGTGTGAAGAATCCAGCCTGAAGCACCGGCCAGCCCTCCAGGGGCTGGAGAACGGC
 TTGCCACCGTCAAGGAGAAAACCGGGCCGGGAGCAAGAAGTGTGCTTCCAGATGACTTGGATACAA
 ATAAGAAACTCAAGAAAGCCTCCTCAAGGGGAGGAAGAGTGGGGCGGGCCCGAGGCTGGTGTCCCGG
 CAGGCCCGCGGGCGGGGCCACAGGGCGGGGAGCAGGGCGCATGGCCACGGACGGGAGGGCGGTGGTGGCC
 AAACCTAAGCACAAAGCAACTGACTACCGCGGTGGAAGTCTCGGCCGAGATTTCTACGAAGAGGCC
 TGAGGAGGGCCCGCGCGGTGCGCCGGGAGAATGTGGGGCTGTACCCCGCGCTGTGCCTCTGCCCTACGC
 CAGCCCTACGCCTACGTGGCTAGCGACTCCGAGTACTCGGCCGAGTGGAGTCCCTGTTCCACTCCACC
 GTGGTGGACACCAGTGAAGACGAGCAGAGCAATTACACCACCAACTGCTTCGGGGACAGCGAGTCGAGTG
 TGAGCGAGGGCGAGTTCGTGGGGGAGAGCAACCACCAGCGACTCTGAAGAAAGCGGGGCTTAATTTG
 GTCCCAGTTTGTCCAGACTCTGCCATTCAAACGGTAACGGCCCCAGACCTTACAACCACCCCGCAAAA
 ACCTTTGTCAAAATTAAGGCCTCACATAACCTCAAGAAGAAGATCCTCCGCTTTCGGTCTGGCTCTTTGA
 AACTGATGACGACGGT

ACGCGTACGCGGCCGCTCGAGCAGAAACTCATCTCAGAAGAGGATCTGGCAGCAATGATATCCTGGATT
 ACAAGGATGACGACGATAAGGTTTAA

Protein Sequence: >RC215557 representing NM_001079520
Red=Cloning site Green=Tags(s)

MKPSPAGTAKELEPPAPARGEQRTAEPEGRWREKGEADTERQRTREERQEATLAGLAELEYLRQRQELLVR
GALRGAGGAGAAAPRAGELLGAAQSRLEEKFLEENILLRQQLNCLRRRDAGLLNQLQELDKQISDLR
LDVEKTSEEHLETDSRPSSGFYELSDGASGSLSNSNSVVFSECLSSCHSSTCFCSPLEATLSLSDGCPKS
ADVNPKYQCDLVSKNGNDVYRYPSPHVAVAVQSPMFLCLTGNPLREEDRLGNHASDICGGSELDVKT
SSLPSPSSLWSASHPSSSKMDGYILSLVQKTHPVRTNKPRTSVNADPTKGLLRNGSVCVRAPGGVSQG
NSVNLKNSKQACLPSGGIPSLNNGTFSPPKQWSKESKAEQAESKRVPLEPGCPSGAASDLQSKHLPKTAK
PASQEHARCSAIGTGESPKESAQLSGASPKEPSRGPAPPQENKVVQPLKMSQKNSLQGVPPATPPLLS
TAFPVEERPALDFKSEGSSQSLEEAHLVKAQFIPGQQPSVRLHRGHRNMGVVKNSSLKHRGPALQGLENG
LPTVREKTRAGSKKCRFPDDLDTNKKLKKASSKGRKSGGGPEAGVGRPAGGGHRAGSRAHGHGREAVVA
KPKHKRTDYRRWKSSAEISYEEALRRARRGRRENVGLYPAPVPLPYASPYAYVASDSEYSAECESLFHST
VVDTSEDEQSNTNCFGDSESSVSEGEFVGESTTTSDSEESGGLIWSQFVQTLPIQTVTAPDLHNHPAK
TFVKIKASHNLKKKILFRSGSLKLMTTV

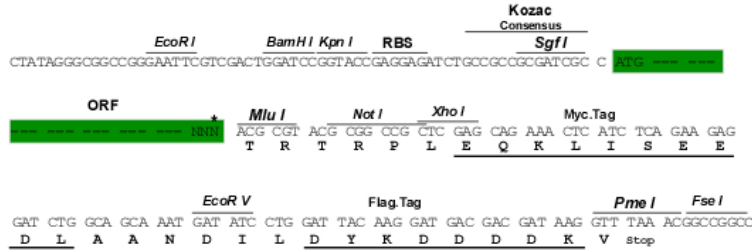
TRTRPLEQKLISEEDLAANDILDYKDDDDKV

Chromatograms: https://cdn.origene.com/chromatograms/mk8101_c02.zip

Restriction Sites: Sgfl-Mlul

Cloning Scheme:

Cloning sites used for ORF Shutting:



* The last codon before the Stop codon of the ORF

ACCN: NM_001079520

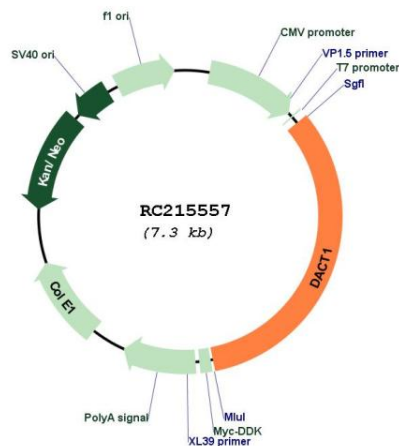
ORF Size: 2397 bp

OTI Disclaimer: Due to the inherent nature of this plasmid, standard methods to replicate additional amounts of DNA in E. coli are highly likely to result in mutations and/or rearrangements. Therefore, OriGene does not guarantee the capability to replicate this plasmid DNA. Additional amounts of DNA can be purchased from OriGene with batch-specific, full-sequence verification at a reduced cost. Please contact our customer care team at custsupport@origene.com or by calling 301.340.3188 option 3 for pricing and delivery.

The molecular sequence of this clone aligns with the gene accession number as a point of reference only. However, individual transcript sequences of the same gene can differ through naturally occurring variations (e.g. polymorphisms), each with its own valid existence. This clone is substantially in agreement with the reference, but a complete review of all prevailing variants is recommended prior to use. [More info](#)

OTI Annotation:	This clone was engineered to express the complete ORF with an expression tag. Expression varies depending on the nature of the gene.
Components:	The ORF clone is ion-exchange column purified and shipped in a 2D barcoded Matrix tube containing 10ug of transfection-ready, dried plasmid DNA (reconstitute with 100 ul of water).
Reconstitution Method:	<ol style="list-style-type: none"> 1. Centrifuge at 5,000xg for 5min. 2. Carefully open the tube and add 100ul of sterile water to dissolve the DNA. 3. Close the tube and incubate for 10 minutes at room temperature. 4. Briefly vortex the tube and then do a quick spin (less than 5000xg) to concentrate the liquid at the bottom. 5. Store the suspended plasmid at -20°C. The DNA is stable for at least one year from date of shipping when stored at -20°C.
RefSeq:	<u>NM_001079520.2</u>
RefSeq Size:	3766 bp
RefSeq ORF:	2400 bp
Locus ID:	51339
UniProt ID:	<u>Q9NYF0</u>
Cytogenetics:	14q23.1
MW:	86.2 kDa
Gene Summary:	The protein encoded by this gene belongs to the dapper family, characterized by the presence of PDZ-binding motif at the C-terminus. It interacts with, and positively regulates dishevelled-mediated signaling pathways during development. Depletion of this mRNA from xenopus embryos resulted in loss of notochord and head structures, and mice lacking this gene died shortly after birth from severe posterior malformations. Alternatively spliced transcript variants have been found for this gene. [provided by RefSeq, Jan 2012]

Product images:



Circular map for RC215557