

Product datasheet for RC215553

CDCP1 (NM_178181) Human Tagged ORF Clone

Product data:

Product Type:	Expression Plasmids
Product Name:	CDCP1 (NM_178181) Human Tagged ORF Clone
Tag:	Myc-DDK
Symbol:	CDCP1
Synonyms:	CD318; SIMA135; TRASK
Mammalian Cell Selection:	Neomycin
Vector:	pCMV6-Entry (PS100001)
E. coli Selection:	Kanamycin (25 ug/mL)
ORF Nucleotide Sequence:	>RC215553 representing NM_178181 Red=Cloning site Blue=ORF Green=Tags(s)

TTTTGTAATACGACTCACTATAGGGCGGCCGGAATTCGTCGACTGGATCCGGTACCGAGGAGATCTGCC
GCC**CGATCGCC**

ATGGCCGGCTGAACTGCGGGTCTCTATCGCACTGCTAGGGTCTGCTGCTGGGTGCGGCGGCCTGC
CGCGCGGGCAGAAGCTTTGAGATTGCTCTGCCACGAGAAGCAACATTACAGTTCTATAAAGCTGGG
GACCCCGACTCTGCTGGCAAACCCTGTTACATCGTCATTTCTAAAAGACATATAACCATGTTGCCATC
AAGTCTGGAGAAAGAATAGTCTTACCTTTAGCTGCCAGAGTCTGAGAATCACTTTGCATAGAGATCC
AGAAAAATATTGACTGTATGTCAGGCCATGTCCTTTGGGGAGGTTGAGCTTCAGCCCTCGACATCGTT
GTTGCCTACCCTCAACAGAACTTTCATCTGGGATGTCAAAGCTCATAAGAGCATCGGTTTAGAGCTCGAG
TTTTCCATCCCTCGCCTGAGGCAGATCGGTCCGGTGAGAGCTGCCAGACGGAGTCACTCACTCCATCA
GCGGCCGAATCGATGCCACCGTGGTCAGGATCGGAACCTTCTGCAGCAATGGCACTGTGTCCCGGATCAA
GATGCAAGAAGGAGTAAAAATGGCCTTACACCTCCCATGGTTCCACCCAGAAAATGTCTCCGGCTTACGC
ATTGCAAACCGCTCATCTATAAACGTCTGTGCATCATCGAGTCTGTGTTTGAGGGTGAAGGCTCAGCAA
CCCTGATGTCTGCCAACTACCCAGAAGGCTTCCCTGAGGATGAGCTCATGACGTGGCAGTTTGTCTGTTCC
TGCACACCTGCGGGCCAGCGTCTCCTTCTCAACTCAACCTCTCAACTGTGAGAGGAAGGAGGAGCGG
GTTGAATACTACATCCCGGGCTCCACCACCAACCCGAGGTGTTCAAGCTGGAGGACAAGCAGCCTGGGA
ACATGGCGGGAACTTCAACCTCTCTGCAAGGCTGTGACCAAGATGCCAAAGTCCAGGGATCCTCCG
GCTGCAGTTCGAAGTTTTGGTCCAACATCCACAAAATGAAAGCAGTGAG

ACGCGTACGCGGCCGCTCGAGCAGAAACTCATCTCAGAAGAGGATCTGGCAGCAATGATATCCTGGATT
ACAAGGATGACGACGATAAGGTTTAA



[View online »](#)

Reconstitution Method:

1. Centrifuge at 5,000xg for 5min.
2. Carefully open the tube and add 100ul of sterile water to dissolve the DNA.
3. Close the tube and incubate for 10 minutes at room temperature.
4. Briefly vortex the tube and then do a quick spin (less than 5000xg) to concentrate the liquid at the bottom.
5. Store the suspended plasmid at -20°C. The DNA is stable for at least one year from date of shipping when stored at -20°C.

RefSeq: [NM_178181.2](#)

RefSeq Size: 1410 bp

RefSeq ORF: 1032 bp

Locus ID: 64866

UniProt ID: [Q9H5V8](#)

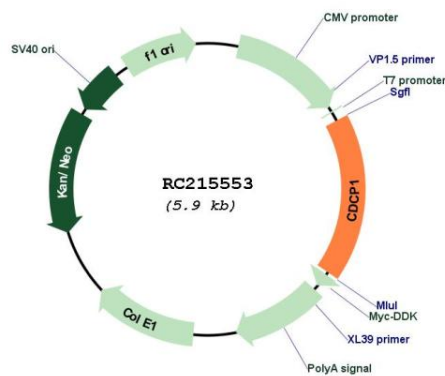
Cytogenetics: 3p21.31

Protein Families: ES Cell Differentiation/IPS, Transmembrane

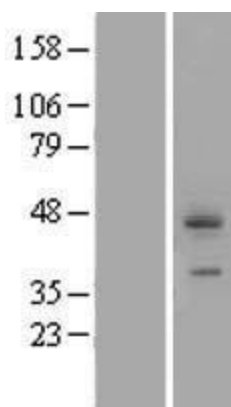
MW: 37.6 kDa

Gene Summary: This gene encodes a transmembrane protein which contains three extracellular CUB domains and acts as a substrate for Src family kinases. The protein plays a role in the tyrosine phosphorylation-dependent regulation of cellular events that are involved in tumor invasion and metastasis. Alternative splicing results in multiple transcript variants of this gene. [provided by RefSeq, May 2013]

Product images:



Circular map for RC215553



Western blot validation of overexpression lysate (Cat# [LY406018]) using anti-DDK antibody (Cat# [TA50011-100]). Left: Cell lysates from untransfected HEK293T cells; Right: Cell lysates from HEK293T cells transfected with RC215553 using transfection reagent MegaTran 2.0 (Cat# [TT210002]).