

Product datasheet for **RC215552**

ASH2L (NM_004674) Human Tagged ORF Clone

Product data:

Product Type:	Expression Plasmids
Product Name:	ASH2L (NM_004674) Human Tagged ORF Clone
Tag:	Myc-DDK
Symbol:	ASH2L
Synonyms:	ASH2; ASH2L1; ASH2L2; Bre2
Mammalian Cell Selection:	Neomycin
Vector:	pCMV6-Entry (PS100001)
E. coli Selection:	Kanamycin (25 ug/mL)



[View online »](#)

ORF Nucleotide Sequence:

>RC215552 representing NM_004674
 Red=Cloning site Blue=ORF Green=Tags(s)

TTTTGTAATACGACTCACTATAGGGCGGCCGGGAATTCGTCGACTGGATCCGGTACCGAGGAGATCTGCC
 GCC**CGCATCGCC**

ATGGCGGGCAGGAGCAGGACCTGGCCAGGAAGCGGGTCCCGGGCTGGCCAGGAGCGGTGCGAAATG
 CAACAGGGGCAGAAGAGGGGAGATGAAGCCGGTGGCAGCGGGAGCAGCCGCTCCTCCTGGAGAGGGAT
 CTCTGCTGCTCCGACAGTTGAGCCAGTTCCGGGAGGCTGAAGCGGGGAGGCAAACCTGGTCGATGTA
 AGCGGTGGCTTGAGACAGAATCATCTAATGGAAGATACACTAGAAGGTGCTGGGGATACATCAGAGG
 TGATGGATACTCAGGCGGGCTCCGTGGATGAAGAGAATGGCCGACAGTTGGGTGAGGTAGAGCTGCAATG
 TGGGATTTGTACAAAATGGTTCACGGCTGACACATTTGGCATAGATACCTCATCTGTCTACCTTCATG
 ACCAACTACAGTTTTTCATTGCAACGTCTGCCATCACAGTGGGAATACCTATTTCTCCGGAAGCAAGCAA
 ACTTGAAGGAAATGTGCCTTAGTGCTTTGGCCAACTGACATGGCAGTCCCGAACACAGGATGAACATCC
 GAAGACAATGTTCTCAAAGATAAGGATATTATACCATTTATTGATAAACTGGGAGTGCATGACAACC
 AGACAGAGACCTGGGAAAATGACTTGGCCAAAATAACATTGTTAAAACAATGAGTAAAGAAAAGAGATGTAT
 TCTTGGTAAAGGAACACCCAGATCCAGGAGTAAAGATCCAGAAGAAGATTACCCCAAATTTGGACTTTT
 GGATCAGGACCTTAGTAACATTGGTCTGCTTATGACAACAAAAACAGAGCAGTGTGTCTACTAGT
 GGGAAATTTAAATGGGGGAATTGCAGCAGGAAGCAGCGAAAAGGACGAGGAGCCAAGCGCAAACAGCAGG
 ATGGAGGGACCACAGGGACCACCAAGAAGGCCCGGAGTGACCCCTTTGTTTTCTGCTCAGCGCCTCCCCC
 TCATGGCTACCCATTGGAACACCCGTTTAAACAAGATGGCTATCGGTATATTCTAGCTGAGCCTGATCCG
 CACGCCCTGACCCCGAGAAGCTGGAACCTTGACTGCTGGCAGGAAAACCTATTCCTGGAGACCTCTACA
 GAGCCTGCTTGTATGAACGGGTTTTGTTAGCCCTACATGATCGAGCTCCCAAGTAAAGATCTCAGATGA
 CCGGCTGACTGTGGTTGGAGAGAAGGGCTACTCTATGGTGAGGGCCTCTCATGGAGTACGGAAGGGTGCC
 TGGTATTTTGAATCACTGTGGATGAGATGCCACCAGATACCGCTGCCAGACTGGTTGGTCCCAGCCCC
 TAGGAAACCTTCAAGCTCCTTTAGGTTATGATAAATTTAGCTATTCTTGGCGGAGCAAAAAGGGAACCAA
 GTTCCACCAGTCCATTGGCAAACACTACTCTTCTGGCTATGGACAGGGAGACGTCTGGGATTTTATATT
 AATCTTCTGAAGACACAGAGACAGCCAAGTATTGCCAGACACATAACAAGATAAGGCTTTGATAAAAT
 TCAAGAGTTATTTGATTTTGAAGAAAAGACTTTGTGGATAAAGCAGAGAAGAGCCTGAAGCAGACTCC
 CCATAGTGAGATAATATTTTAAAAATGGTGTCAATCAAGGTGTGGCTTACAAAGATATTTTGAAGGG
 GTTTACTTCCCAGCCATCTCACTGTACAAGAGCTGCACGGTTTCCATTAACCTTTGGACCATGCTTCAAGT
 ATCCTCCGAAGGATCTCACTTACCGCCCTATGAGTGACATGGGCTGGGGCGCCGTTGGTAGAGCACACCCCT
 GGCTGACGTCTTGTATCAGTGGAGACAGAAGTGGATGGGAGGCGCAGTCCCCCATGGGAACCC

ACGCGTACGCGGCCGCTCGAGCAGAACTCATCTCAGAAGAGGATCTGGCAGCAAATGATATCCTGGATT
 ACAAGGATGACGACGATAAGGTTTAA

Protein Sequence:

>RC215552 representing NM_004674
 Red=Cloning site Green=Tags(s)

MAAAGAGPGQEAGAGPGGAVANATGAEEGEMKPVAAGAAAPPGEGISAAPTVEPSSGEAEGGEANLVDV
 SGGLETESSNGKDTLEGAGDTSEVMDTQAGSVDEENRQLGEVELQCGICTKWFTADTFGIDTSSCLPFM
 TNYSFHCNVCHSGNTYFLRKQANLKEMCLSALANLTWQSRQDEHPKTMFSKDKDIIPFIDKYWECMTT
 RQRPGKMTWPNNIVKTMskerDVFLVKEHPDPGSKDPEEDYPKFGLLDQDL SNIGPAYDNQKQSSAVSTS
 GNLNGGIAAGSSGKGRGAKRKQDGGTTGTTKARSDFL SAQRLPPHGYPLEHPFNKDG YRILAE PDP
 HAPDPEKLELDCWAGKPIPGDLYRACL YERVLLALHDRAPQLKISDDRLTVVGEKGYSMVRASHGVRKGA
 WYFEITVDEMPDPTAARLGWSQPLGNLQAPLGYDKFSYSWRSKGTGFHQSI GKHYSSGYQGQDVLGFYI
 NLPEDTETAKSLPDTYKDKALIKFKSYLYFEEDFV DKAESLQTPHSEIIFYKNGVNGVAYKDFEFG
 VYFPAISLYKSCVTSINFGPCFKYPPKDLTYRPMSDMGWAVVEHTLADVLVHVEVEVDGRRSPWP

TRTRPLEQKLISEEDLAANDILDYKDDDDKV

Chromatograms: https://cdn.origene.com/chromatograms/mk6124_c06.zip

Restriction Sites: SgfI-MluI

Cloning Scheme:



ACCN: NM_004674

ORF Size: 1884 bp

OTI Disclaimer: The molecular sequence of this clone aligns with the gene accession number as a point of reference only. However, individual transcript sequences of the same gene can differ through naturally occurring variations (e.g. polymorphisms), each with its own valid existence. This clone is substantially in agreement with the reference, but a complete review of all prevailing variants is recommended prior to use. [More info](#)

OTI Annotation: This clone was engineered to express the complete ORF with an expression tag. Expression varies depending on the nature of the gene.

Components: The ORF clone is ion-exchange column purified and shipped in a 2D barcoded Matrix tube containing 10ug of transfection-ready, dried plasmid DNA (reconstitute with 100 ul of water).

Reconstitution Method:

1. Centrifuge at 5,000xg for 5min.
2. Carefully open the tube and add 100ul of sterile water to dissolve the DNA.
3. Close the tube and incubate for 10 minutes at room temperature.
4. Briefly vortex the tube and then do a quick spin (less than 5000xg) to concentrate the liquid at the bottom.
5. Store the suspended plasmid at -20°C. The DNA is stable for at least one year from date of shipping when stored at -20°C.

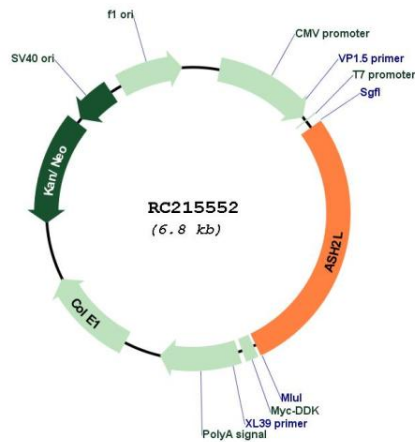
Note: Plasmids are not sterile. For experiments where strict sterility is required, filtration with 0.22um filter is required.

RefSeq: [NM_004674.5](#)

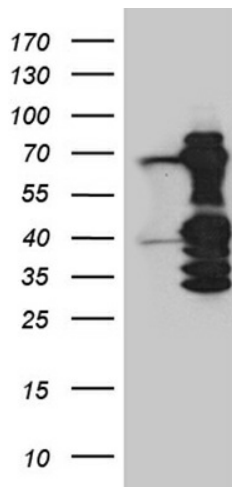
RefSeq Size: 2381 bp

RefSeq ORF:	1887 bp
Locus ID:	9070
UniProt ID:	Q9UBL3
Cytogenetics:	8p11.23
Domains:	SPRY
Protein Families:	Druggable Genome, Transcription Factors
MW:	68.5 kDa
Gene Summary:	Component of the Set1/Ash2 histone methyltransferase (HMT) complex, a complex that specifically methylates 'Lys-4' of histone H3, but not if the neighboring 'Lys-9' residue is already methylated. As part of the MLL1/MLL complex it is involved in methylation and dimethylation at 'Lys-4' of histone H3. May function as a transcriptional regulator. May play a role in hematopoiesis.[UniProtKB/Swiss-Prot Function]

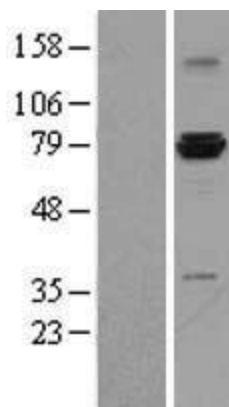
Product images:



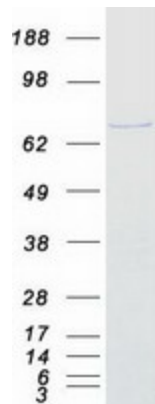
Circular map for RC215552



HEK293T cells were transfected with the pCMV6-ENTRY control (Cat# [PS100001], Left lane) or pCMV6-ENTRY ASH2L (Cat# RC215552, Right lane) cDNA for 48 hrs and lysed. Equivalent amounts of cell lysates (5 ug per lane) were separated by SDS-PAGE and immunoblotted with anti-ASH2L (Cat# [TA810989])(1:2000). Positive lysates [LY401483] (100ug) and [LC401483] (20ug) can be purchased separately from OriGene.



Western blot validation of overexpression lysate (Cat# [LY401483]) using anti-DDK antibody (Cat# [TA50011-100]). Left: Cell lysates from untransfected HEK293T cells; Right: Cell lysates from HEK293T cells transfected with RC215552 using transfection reagent MegaTran 2.0 (Cat# [TT210002]).



Coomassie blue staining of purified ASH2L protein (Cat# [TP315552]). The protein was produced from HEK293T cells transfected with ASH2L cDNA clone (Cat# RC215552) using MegaTran 2.0 (Cat# [TT210002]).