

Product datasheet for RC215551

ZPLD1 (NM_175056) Human Tagged ORF Clone

Product data:

Product Type:	Expression Plasmids
Product Name:	ZPLD1 (NM_175056) Human Tagged ORF Clone
Tag:	Myc-DDK
Symbol:	ZPLD1
Mammalian Cell Selection:	Neomycin
Vector:	pCMV6-Entry (PS100001)
E. coli Selection:	Kanamycin (25 ug/mL)
ORF Nucleotide Sequence:	>RC215551 representing NM_175056 Red=Cloning site Blue=ORF Green=Tags(s)

TTTTGTAATACGACTCACTATAGGGCGGCCGGAATTCGTCGACTGGATCCGGTACCGAGGAGATCTGCC
GCC**CGATCGCC**

ATGATGCTCAGGTTTTCCATGTGCAGGGGAAATGATGAAGTTTTGCAATGGAACAAATATGGTTGCTGC
TGCTTCTAACAAATTAGAGTGCTCCGGGTCTGCTCAGTTC AACGGCTACAACCTGTGATGCCAACCTCCA
CAGTAGATTTCTGCTGAAAGAGACATCAGTGTCTATTGTGGAGTGCAGGCTATTACGATGAAGATTAAT
TTTTGCACGGTACTTTTCTCGGGTTATTCGAAACAGATCTGGCACTGAATGGAAGGCATGGGGACTCCC
TGAGAGGGTTCATCAATAACAACACCTTTCCAGCAGTGGTCATTTTTATCATCAATCTCAGCACCTT
GGAGGGCTGTGGAAACAACCTGGTGGTATCCACAATTCCTGGAGTCAGTGTCTATGGAAATGCAACTTCA
GTGCAAGTAGGAAATATTCAGGATATATTGATACTCCAGACCCACCAACAATCATCAGCTATCTACCTG
GGCTTCTTACAAATTTAGTTGTAGTTATCCATTGGAATACCTGGTTAATAATACCCAGCTTGCTTCGTC
CTCAGCGGCTATTTCTGTGAGAGAGAACAATGGCACATTTGTCAGCACTTTGAACCTGCTCCTTTATAAC
GATTCAACCTACAACCAGCAGTTAATTATCCCCAGTATAGGATTACCTTTGAAAACCAAAGTATTTGCAG
CTGTCCAAGCCACTAATTTGGATGGCAGATGGAATGTTTTAATGGATTATTGCTATACTACCCCATCAGG
AAACCAAATGATGACATTCGATATGATCTTTTCTTAGCTGTGACAAGGACCCTCAGACCACCGTCATT
GAGAATGGCCGAAGCCAGCGGGCCGGTTTTCTTTGAAGTGTTCCGATTTGTGAAACACAAGAATCAGA
AAATGTCCACTGTCTTCTTGCACTGCGTTACCAAGCTCTGCAGAGCAGATGACTGCCCTTCCTTATGCC
GATTTGCAGCCACAGAGAAAGGAGAGATGCTGGGAGGAGACGACTTGGAGCCCCAGAGCTCTTCTGGC
AGCGCGGTGCTCTGCTGGTCCCATCATTACTCGGAGTGATGAGACTCCAACCAACAATTCGCAACTTG
GTTCTCCAAGTATGCCTCCCTTCCAGCTGAACGCCATCACCAGCGCACTGATATCAGGAATGGTCATTCT
GGGAGTTACGAGCTTTTCTTCTTCTGTGCTCACTGGCCCTTCTGCACAGGAAGGGACCCACAAGTTTA
GTGTTGAATGGCATAAGAAACCCAGTCTTTGAC

ACGCGTACGCGGCCGCTCGAGCAGAAACTCATCTCAGAAGAGGATCTGGCAGCAAATGATATCCTGGATT
ACAAGGATGACGACGATAAGGTTTAA



[View online >](#)

Protein Sequence: >RC215551 representing NM_175056
Red=Cloning site Green=Tags(s)

MMLRFSMCRGNDEGFAMEQIWLLLLLTIRVLPGSAQFNGYNCDANLHSRFP AERDISVYCGVQAITMKIN
 FCTVLFSGYSETDLALNGRHRGDSHCRGF INNNTFPAVVIFIINLSTLEGCGNNLVVSTIPGVSAYGNATS
 VQVGNISGYIDTPDPPTIISYLPGLLYKFSCSYPLEYLVNNTQLASSAAISVRENNGTFVSTLNLLLYN
 DSTYNQQLIIPISIGLPLKTKVFAAVQATNLDGRWNVLMDYCYTTPSGNPND DIRYDLFLSCDKDPQTTVI
 ENGRSQRGRFSFEVFRFKVHKNQKMSVFLHCVTKLCRADDCPFLMPICSHRERRDAGRRTTWSPOSSSG
 SAVLSAGPIITRSDPTNNSQLGSPSPMPFQLNAITSALISGMVILGVTSFSLLLCSLALLHRKGPTSL
 VLNGIRNPVFD

TRTRPLEQKLISEEDLAANDILDYKDDDDKV

Chromatograms: https://cdn.origene.com/chromatograms/mk8013_b08.zip

Restriction Sites: SgfI-MluI

Cloning Scheme:



ACCN: NM_175056

ORF Size: 1293 bp

OTI Disclaimer: The molecular sequence of this clone aligns with the gene accession number as a point of reference only. However, individual transcript sequences of the same gene can differ through naturally occurring variations (e.g. polymorphisms), each with its own valid existence. This clone is substantially in agreement with the reference, but a complete review of all prevailing variants is recommended prior to use. [More info](#)

OTI Annotation: This clone was engineered to express the complete ORF with an expression tag. Expression varies depending on the nature of the gene.

Components: The ORF clone is ion-exchange column purified and shipped in a 2D barcoded Matrix tube containing 10ug of transfection-ready, dried plasmid DNA (reconstitute with 100 ul of water).

Reconstitution Method:

1. Centrifuge at 5,000xg for 5min.
2. Carefully open the tube and add 100ul of sterile water to dissolve the DNA.
3. Close the tube and incubate for 10 minutes at room temperature.
4. Briefly vortex the tube and then do a quick spin (less than 5000xg) to concentrate the liquid at the bottom.
5. Store the suspended plasmid at -20°C. The DNA is stable for at least one year from date of shipping when stored at -20°C.

RefSeq: [NM_175056.2](#)

RefSeq Size: 3639 bp

RefSeq ORF: 1296 bp

Locus ID: 131368

UniProt ID: [Q8TCW7](#)

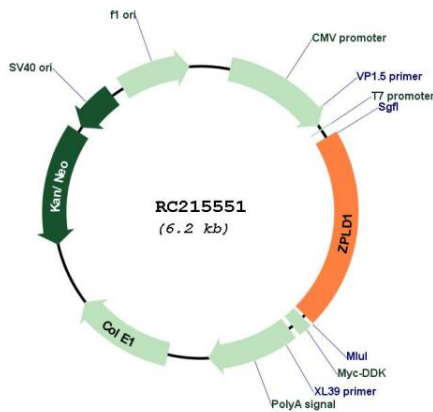
Cytogenetics: 3q12.3

Protein Families: Transmembrane

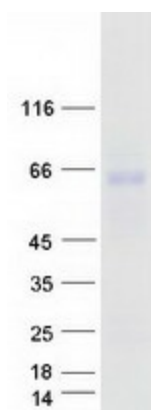
MW: 47.2 kDa

Gene Summary: Glycoprotein which is a component of the gelatinous extracellular matrix in the cupulae of the vestibular organ.[UniProtKB/Swiss-Prot Function]

Product images:



Circular map for RC215551



Coomassie blue staining of purified ZPLD1 protein (Cat# [TP315551]). The protein was produced from HEK293T cells transfected with ZPLD1 cDNA clone (Cat# RC215551) using MegaTran 2.0 (Cat# [TT210002]).