

## Product datasheet for **RC215540**

### ZNF80 (NM\_007136) Human Tagged ORF Clone

#### Product data:

Product Type:	Expression Plasmids
Product Name:	ZNF80 (NM_007136) Human Tagged ORF Clone
Tag:	Myc-DDK
Symbol:	ZNF80
Synonyms:	pT17
Mammalian Cell Selection:	Neomycin
Vector:	pCMV6-Entry (PS100001)
E. coli Selection:	Kanamycin (25 ug/mL)
ORF Nucleotide Sequence:	>RC215540 ORF sequence Red=Cloning site Blue=ORF Green=Tags(s)

TTTTGTAATACGACTCACTATAGGGCGCCGGGAATTCGTCGACTGGATCCGGTACCGAGGAGATCTGCC  
GCC**CGATCGCC**

ATGAGCCCTAAACGCGATGGGTTGGGGACAGGTGATGGTCTGCACTCACAGGTTTTACAGGAGCAGGTCT  
CCACAGGAGACAATCTCCATGAATGTGACTCCCAGGGACCAAGTAAAGACACTTTGGTTCGTGAGGGGAA  
GACCTACAAATGCAAGGAATGTGGGAGCGTGTAAACAAAACAGCCTCCTTGTTCGACATCAGCAGATT  
CACACTGGGGTGAAGCCTTATGAATGCCAGGAGTGTGAAAAGCCTTTCCTGAAAAGGTCGACTTCGTTT  
GACCCATGAGGATTCACACAGGGGAGAAGCCCTGTAAGTGCCTGGAGTGCAGGAAAGTCTTCAACCGCAG  
GTCGCACCTCCTGTGCTACCGCCAGATTCACACTGGAGAGAAGCCCTATGAGTGCAGCGAGTGTGAAAAG  
ACCTTCAGCTATCACTCTGTCTTCATCCAGCATCGTGTGACCCCACTGGAGAAAACTCTTTGGGTGCA  
AAGAATGTGAAAAACCTTTTACTACAACCTCTTCTTAACCCGGCACATGAAGATTCACTGGAGAGAA  
GCCCTGCAAGTGCAGTGTGAGTGCAGGAAAGACCTTACCTACCGCTCTGTTTTCTCCGACATAGTATGACC  
CACACTGCAGGAAAGCCCTACGAGTGCAAAGAATGTGGAAAGGTTTTTACTACAGCTATTCCTCACTC  
GACATAAAGGAGTCACACTGGAGAGAAACCTTATGAGTGCCTTGAACATAGAAAGGACTTTGGCTACCA  
CTCTGCTTTTGCCCAACAGAGTAAGATCCACTCTGGAGGAAAAACCTT

**ACGCGT**ACGCGGCCGCTCGAGCAGAAACTCATCTCAGAAGAGGATCTGGCAGCAAATGATATCCTGGATT  
ACAAGGATGACGACGATAAGGTTTAA



[View online »](#)

**Protein Sequence:** >RC215540 protein sequence  
Red=Cloning site Green=Tags(s)

MSPKRDGLGTGDGLHSQVLQEQVSTGDNLHECDSQGPSKDTLVREGKTYKCKECSVFNKNSLLVRHQI  
 HTGVKPYECQECGKAFPEKVDVFRPMRIHTGEKPCCKVECGKVFNRSHLLCYRQIHTGEKPYECSECGK  
 TFSYHSVFIQHRVTHTGEKLFGCKECCGKTFYYNSSLTRHMKIHTGEKPCCKSECGKTFYRSVFFRHSMT  
 HTAGKPYECKECCGKGFYYSSYLTRHTRSHTGEKPYECLHRKDFGYHSFAAQQSKIHSGGKNL

TRTRPLEQKLISEEDLAANDILDYKDDDDKV

**Chromatograms:** [https://cdn.origene.com/chromatograms/mk6440\\_f11.zip](https://cdn.origene.com/chromatograms/mk6440_f11.zip)

**Restriction Sites:** SgfI-MluI

**Cloning Scheme:**

Cloning sites used for ORF Shuttling:



\* The last codon before the Stop codon of the ORF

**ACCN:** NM\_007136

**ORF Size:** 819 bp

**OTI Disclaimer:** The molecular sequence of this clone aligns with the gene accession number as a point of reference only. However, individual transcript sequences of the same gene can differ through naturally occurring variations (e.g. polymorphisms), each with its own valid existence. This clone is substantially in agreement with the reference, but a complete review of all prevailing variants is recommended prior to use. [More info](#)

**OTI Annotation:** This clone was engineered to express the complete ORF with an expression tag. Expression varies depending on the nature of the gene.

**Components:** The ORF clone is ion-exchange column purified and shipped in a 2D barcoded Matrix tube containing 10ug of transfection-ready, dried plasmid DNA (reconstitute with 100 ul of water).

**Reconstitution Method:**

1. Centrifuge at 5,000xg for 5min.
2. Carefully open the tube and add 100ul of sterile water to dissolve the DNA.
3. Close the tube and incubate for 10 minutes at room temperature.
4. Briefly vortex the tube and then do a quick spin (less than 5000xg) to concentrate the liquid at the bottom.
5. Store the suspended plasmid at -20°C. The DNA is stable for at least one year from date of shipping when stored at -20°C.

**RefSeq:** [NM\\_007136.4](#)

**RefSeq Size:** 2957 bp

**RefSeq ORF:** 822 bp

**Locus ID:** 7634

**UniProt ID:** [P51504](#)

**Cytogenetics:** 3q13.31

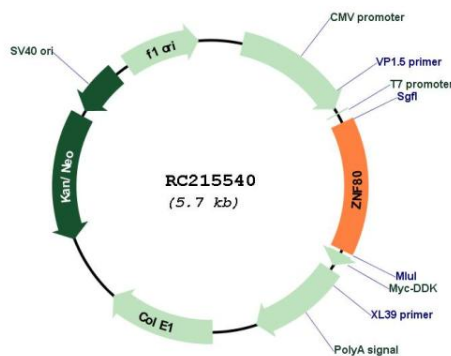
**Domains:** zf-C2H2

**Protein Families:** Transcription Factors

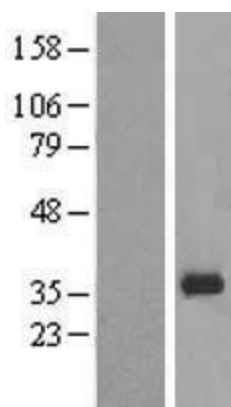
**MW:** 31.2 kDa

**Gene Summary:** May be involved in transcriptional regulation.[UniProtKB/Swiss-Prot Function]

**Product images:**



Circular map for RC215540



Western blot validation of overexpression lysate (Cat# [LY416179]) using anti-DDK antibody (Cat# [TA50011-100]). Left: Cell lysates from untransfected HEK293T cells; Right: Cell lysates from HEK293T cells transfected with RC215540 using transfection reagent MegaTran 2.0 (Cat# [TT210002]).