

## Product datasheet for **RC215527**

### ARSA (NM\_001085426) Human Tagged ORF Clone

#### Product data:

Product Type:	Expression Plasmids
Product Name:	ARSA (NM_001085426) Human Tagged ORF Clone
Tag:	Myc-DDK
Symbol:	ARSA
Synonyms:	ASA; MLD
Mammalian Cell Selection:	Neomycin
Vector:	pCMV6-Entry (PS100001)
E. coli Selection:	Kanamycin (25 ug/mL)



[View online »](#)

**ORF Nucleotide Sequence:**

>RC215527 ORF sequence  
 Red=Cloning site Blue=ORF Green=Tags(s)

TTTTGTAATACGACTCACTATAGGGCGGCCGGAATTCGTCGACTGGATCCGGTACCGAGGAGATCTGCC  
 GCC**GCGATCGCC**

ATGGGGACCGCGGTCCCTCCTCGCCCTGGCTGCTGGCCTGGCCGTTGCCCGTCCGCCAACATCG  
 TGCTGATCTTTGCCGACGACCTCGGCTATGGGGACCTGGGCTGCTATGGGCACCCAGCTTACCACTCC  
 CAACCTGGACCAGCTGGCGGCGGGAGGGTTCGCGTTACAGACTTCTACGTGCCTGTGTCTCTGTGCACA  
 CCCTCTAGGGCCGCCCTCCTGACCGGCCGGCTCCCGTTTCGATGGGCATGTACCCTGGCGTCTGGTGC  
 CCAGCTCCCGGGGGGCCCTGCCCTGGAGGAGGTGACCGTGGCCGAAGTCTGGCTGCCCGAGGCTACCT  
 CACAGGAATGGCCGCAAGTGGCACCTTGGGGTGGGGCTGAGGGGGCTTCTGCCCCCCATCAGGGC  
 TTCATCGATTTCTAGGCATCCCGTACTCCACGACCAGGGCCCTGCCAGAACCTGACCTGCTTCCCGC  
 CGGCCACTCCTTGCACGGTGGCTGTGACCAGGGCCTGGTCCCCATCCACTGTTGGCCAACTGTCCGT  
 GGAGGCGCAGCCCCCTGGCTGCCCGACTAGAGGCCCGTACATGGCTTTCGCCATGACCTCATGGCC  
 GACGCCACGCGCCAGGATCGCCCCCTTCTCCTGTACTATGCCTCTCACCACCCACTACCTCAGTTCA  
 GTGGGCAGAGCTTTCAGAGCGTTCAGGCCGCGGGCCATTTGGGGACTCCCTGATGGAGCTGGATGCAGC  
 TGTGGGACCCCTGATGACAGCCATAGGGGACCTGGGGTCTTGAAGAGACGCTGGTCACTTCACTGCA  
 GACAATGGACCTGAGACCATGCGTATGTCCCGAGGCGGCTGCTCCGGTCTTTCGCGGTGTGGAAAGGGAA  
 CGACCTACGAGGGCGGTGTCGAGAGCCTGCCTTGGCCTTCTGGCCAGGTCAATCGCTCCCGCGTGC  
 CCACGAGCTGGCAGCTCCCTGGACCTGCTGCCTACCTGGCAGCCCTGGCTGGGGCCCCACTGCCAAT  
 GTCACCTGGATGGCTTTCAGCTCAGCCCCCTGCTGCTGGGCACAGGCAAGAGCCCTCGGCAGTCTCT  
 TCTTCTACCCGCTCCTACCCAGAGGCTCTGCCACAGTATACCACTGCAGACCCTGCCTGCCACGCTCCAGCTCTG  
 ACTGCTCATGAGCCCCGCTGCTCTATGACCTGTCCAAGACCCTGGTGAGAACTACAACCTGCTGGGG  
 GTGTGGCCGGGGCCACCCAGAGGTGCTGCAAGCCCTGAAACAGCTTCACTGCTCAAGGCCAGTTAGA  
 CGCAGCTGTGACCTTCGGCCCCAGCCAGGTGGCCCGGGCGAGGACCCCGCCCTGCAGATCTGCTGCAT  
 CCTGGCTGCACCCCCGCCAGCTTGTGCCATTGCCAGATCCCCATGCC

**ACGCGT**ACGCGGCCGCTCGAGCAGAACTCATCTCAGAAGAGGATCTGGCAGCAAATGATATCTGGATT  
 ACAAGGATGACGACGATAAGGTTTAA

**Protein Sequence:**

>RC215527 protein sequence  
 Red=Cloning site Green=Tags(s)

MGAPRSLLLALAAGLAVARPPNIVLIFADDLGYGDLGCGYGHPSSTTPNLDQLAAGLRFDFYVPVSLCT  
 PSRAALLTGRLPVRMGMYPGVLVPSSRGLPLEEVTVAEVLAAARGYLTMAGKWHLGVGPEGAFLPPHQG  
 FHRFLGIPYSHDQGPCQNLTCTFPATPCDGGCDQGLVPIPLLANLSVEAQPPWLPGLARYMAFAHDLMA  
 DAQRQDRPFLLYYASHHYPQFSGQSFASRGRPFGLSMLDAAVGTLMTAIGDLGLEETLVIFTA  
 DNGPETMRMSRGGCSLLRRCGKTTYEGGVREPALAFWPWHIAPGVTHELASSDLLPTLALAGAPLPN  
 VTLDGFDLSPLLLGTGKSPRQSLFFYPSYPDEVRGVFAVRSKYKAHFFTQGSAHSDTTADPACHSSSL  
 TAHEPPLLYDLKDPGENYNLLGGVAGATPEVLQALKQLLKAQLDAAVTFGPSQVARGEDPALQICCH  
 PGCTPRPACCHCPDPA

**TR**TRPLEQKLISEEDLAANDILDYKDDDDKV

**Chromatograms:**

[https://cdn.origene.com/chromatograms/mk6247\\_d09.zip](https://cdn.origene.com/chromatograms/mk6247_d09.zip)

**Restriction Sites:**

Sgfl-Mlul

**Cloning Scheme:**


**ACCN:** NM\_001085426

**ORF Size:** 1521 bp

**OTI Disclaimer:** The molecular sequence of this clone aligns with the gene accession number as a point of reference only. However, individual transcript sequences of the same gene can differ through naturally occurring variations (e.g. polymorphisms), each with its own valid existence. This clone is substantially in agreement with the reference, but a complete review of all prevailing variants is recommended prior to use. [More info](#)

**OTI Annotation:** This clone was engineered to express the complete ORF with an expression tag. Expression varies depending on the nature of the gene.

**Components:** The ORF clone is ion-exchange column purified and shipped in a 2D barcoded Matrix tube containing 10ug of transfection-ready, dried plasmid DNA (reconstitute with 100 ul of water).

**Reconstitution Method:**

1. Centrifuge at 5,000xg for 5min.
2. Carefully open the tube and add 100ul of sterile water to dissolve the DNA.
3. Close the tube and incubate for 10 minutes at room temperature.
4. Briefly vortex the tube and then do a quick spin (less than 5000xg) to concentrate the liquid at the bottom.
5. Store the suspended plasmid at -20°C. The DNA is stable for at least one year from date of shipping when stored at -20°C.

**RefSeq:** [NM\\_001085426.3](#)

**RefSeq Size:** 4172 bp

**RefSeq ORF:** 1530 bp

**Locus ID:** 410

**UniProt ID:** [P15289](#)

**Cytogenetics:** 22q13.33

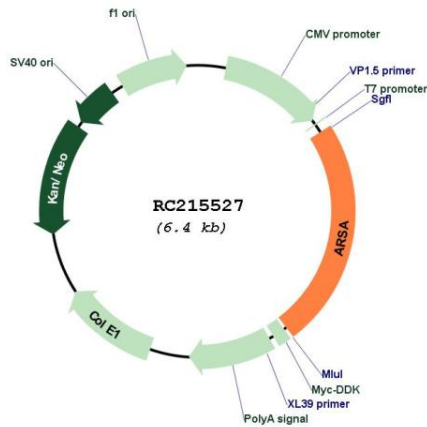
**Protein Families:** Druggable Genome

**Protein Pathways:** Lysosome, Sphingolipid metabolism

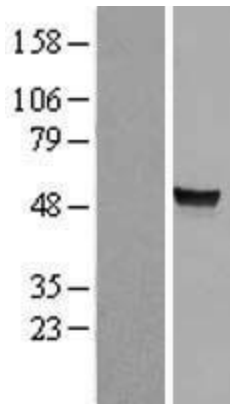
**MW:** 53.6 kDa

**Gene Summary:** The protein encoded by this gene hydrolyzes cerebroside sulfate to cerebroside and sulfate. Defects in this gene lead to metachromatic leucodystrophy (MLD), a progressive demyelination disease which results in a variety of neurological symptoms and ultimately death. Alternatively spliced transcript variants have been described for this gene. [provided by RefSeq, Dec 2010]

**Product images:**



Circular map for RC215527



Western blot validation of overexpression lysate (Cat# [LY421294]) using anti-DDK antibody (Cat# [TA50011-100]). Left: Cell lysates from untransfected HEK293T cells; Right: Cell lysates from HEK293T cells transfected with RC215527 using transfection reagent MegaTran 2.0 (Cat# [TT210002]).