

Product datasheet for **RC215525**

HYAL1 (NM_007312) Human Tagged ORF Clone

Product data:

| | |
|---------------------------|--|
| Product Type: | Expression Plasmids |
| Product Name: | HYAL1 (NM_007312) Human Tagged ORF Clone |
| Tag: | Myc-DDK |
| Symbol: | HYAL1 |
| Synonyms: | HYAL-1; LUCA1; MGC45987; NAT6 |
| Mammalian Cell Selection: | Neomycin |
| Vector: | pCMV6-Entry (PS100001) |
| E. coli Selection: | Kanamycin (25 ug/mL) |



[View online »](#)

ORF Nucleotide Sequence:

>RC215525 representing NM_007312
 Red=Cloning site Blue=ORF Green=Tags(s)

TTTTGTAATACGACTCACTATAGGGCGGCCGGGAATTCGTCGACTGGATCCGGTACCGAGGAGATCTGCC
 GCC**CGCATCGCC**

ATGGCAGCCACCTGCTTCCCATCTGCGCCTCTTCTGACCTTACTCGATATGGCCCAAGGCTTTAGGG
 GCCCTTGCTACCCAACCGGCCCTTACCACCGTCTGGAATGCAAACACCCAGTGGTGCCTGGAGAGGCA
 CGGTGTGGACGTGGATGTCAGTGTCTTCGATGTGGTAGCCAACCCAGGGCAGACCTTCCGCGCCCTGAC
 ATGACAATTTTCTATAGCTCCCAGCTGGGCACCTACCCCTACTACACGCCCACTGGGAGCCTGTGTTTG
 GTGGTCTGCCCAAGAATGCCAGCCTGATTGCCACCTGGCCCGCACATTCAGGACATCTGGTGCCTAT
 ACCTGCTCCTGACTTCTCAGGGCTGGCAGTCATCGACTGGGAGGCATGGCGCCACGCTGGGCCTTCAAC
 TGGGACACCAAGGACATTTACCGCAGCGCTCACGGGCACTGGTACAGGCACAGCACCCCTGATTGGCCAG
 CTCCTCAGGTGGAGGCAGTAGCCAGGACAGTCCAGGGAGCTGCACGGGCCTGGATGGCAGGCACCCCT
 CCAGCTGGGGCGGGCACTGCGTCTCGCGCCTCTGGGGTCTTATGGCTTCCCTGACTGCTACAACATAT
 GACTTTCTAAGCCCAACTACACCGGCCAGTGCCCATCAGGCATCCGTGCCCAAAATGACCAGCTAGGGT
 GGCTGTGGGGCCAGAGCCGTGCCCTCTATCCCAGCATCTACATGCCCGCAGTGTGGAGGGCACAGGGAA
 GTCACAGATGTATGTGCAACACCGTGTGGCCGAGGCATTCGTGTGGCTGTGGTGTGACCCCAAT
 CTGCCGTGCTGCCCTATGTCCAGATCTTCTATGACACGACAAACCCTTCTGCCCTGGATGAGCTGG
 AGCACAGCCTGGGGGAGAGTGGCGCCAGGGGGCAGCTGGAGTGGTGTCTGGGTGAGCTGGGAAAATAC
 AAGAACCAAGGAATCATGTCCAGCCATCAAGGAGTATATGGACTACTGGGGCCCTTCTATCTGAAC
 GTGACCAAGTGGGGCCCTTCTCTGAGTCAAGCCCTGTGCTCCGGCCATGGCCGCTGTGTCCGCCACCA
 GCCACCCAAAGCCCTCCTCCTTAAACCCTGCCAGTTTCTCCATCCAGCTCACGCCTGGTGGTGGGCC
 CCTGAGCCTGCGGGGTGCCCTCTCACTTGAAGATCAGGCACAGATGGCTGTGGAGTTCAAATGTCGATGC
 TACCCTGGCTGGCAGGCACCGTGGTGTGAGCGGAAGAGCATGTGG

ACGCGTACGCGGCCGCTCGAGCAGAAACTCATCTCAGAAGAGGATCTGGCAGCAATGATATCCTGGATT
 ACAAGGATGACGACGATAAGGTTTAA

Protein Sequence:

>RC215525 representing NM_007312
 Red=Cloning site Green=Tags(s)

MAAHLIPICALFLTLDMAQGFRLPLNRPFTTWNANTQWCLERHGVDVSVFDVAVANPGQTFRGPD
 MTIFYSSQLGTYPYTPTGEPVFGGLPQNASLIAHLARTFQDILAAIPAPDFSGLAVIDWEAWRPRWAFN
 WDTKDIYRQRSRALVQAQHPDWPAPQVEAVAQDQFQGAARAWMAGTLQLGRALRPRGLWGFYGFPCYNY
 DFLSPNYTGQCPSGIRAQNDQLGWLWQSRALYPSIYMPAVLEGTGKSQMYVQHRVAEAFRVAVAAGDPN
 LPVLPYVQIFYDTTNHFLPLDELEHSLGESAAQGAAGVVLWVSWENTRTRKESCQAIKEYMDTTLGPFILN
 VTSGALLCSQALCSGHGRCVRRTSHPKALLLLNPAFSIQLTPGGPLSLRGALSLEDQAQMAVEFKCRC
 YPGWQAPWCERKSMW

TRTRPLEQKLISEEDLAANDILDYKDDDDKV

Chromatograms:

https://cdn.origene.com/chromatograms/mk6046_a02.zip

Restriction Sites:

Sgfl-Mlul

Cloning Scheme:


ACCN: NM_007312

ORF Size: 1305 bp

OTI Disclaimer: The molecular sequence of this clone aligns with the gene accession number as a point of reference only. However, individual transcript sequences of the same gene can differ through naturally occurring variations (e.g. polymorphisms), each with its own valid existence. This clone is substantially in agreement with the reference, but a complete review of all prevailing variants is recommended prior to use. [More info](#)

OTI Annotation: This clone was engineered to express the complete ORF with an expression tag. Expression varies depending on the nature of the gene.

Components: The ORF clone is ion-exchange column purified and shipped in a 2D barcoded Matrix tube containing 10ug of transfection-ready, dried plasmid DNA (reconstitute with 100 ul of water).

Reconstitution Method:

1. Centrifuge at 5,000xg for 5min.
2. Carefully open the tube and add 100ul of sterile water to dissolve the DNA.
3. Close the tube and incubate for 10 minutes at room temperature.
4. Briefly vortex the tube and then do a quick spin (less than 5000xg) to concentrate the liquid at the bottom.
5. Store the suspended plasmid at -20°C. The DNA is stable for at least one year from date of shipping when stored at -20°C.

RefSeq: [NM_007312.3](#), [NP_009296.1](#)

RefSeq Size: 2518 bp

RefSeq ORF: 1307 bp

Locus ID: 3373

Cytogenetics: 3p21.31

Domains: Glyco_hydro_56

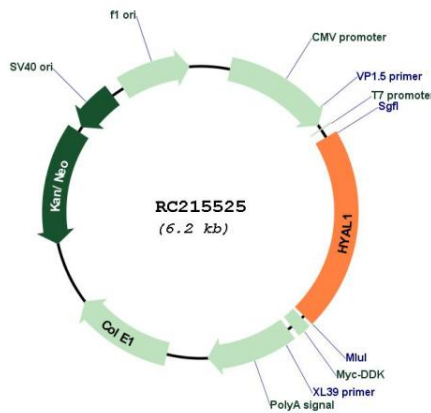
Protein Families: Secreted Protein

Protein Pathways: Glycosaminoglycan degradation, Lysosome, Metabolic pathways

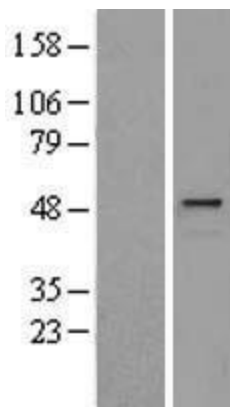
MW: 48.2 kDa

Gene Summary: This gene encodes a lysosomal hyaluronidase. Hyaluronidases intracellularly degrade hyaluronan, one of the major glycosaminoglycans of the extracellular matrix. Hyaluronan is thought to be involved in cell proliferation, migration and differentiation. This enzyme is active at an acidic pH and is the major hyaluronidase in plasma. Mutations in this gene are associated with mucopolysaccharidosis type IX, or hyaluronidase deficiency. The gene is one of several related genes in a region of chromosome 3p21.3 associated with tumor suppression. Multiple transcript variants encoding different isoforms have been found for this gene. [provided by RefSeq, Jul 2008]

Product images:



Circular map for RC215525



Western blot validation of overexpression lysate (Cat# [LY402131]) using anti-DDK antibody (Cat# [TA50011-100]). Left: Cell lysates from untransfected HEK293T cells; Right: Cell lysates from HEK293T cells transfected with RC215525 using transfection reagent MegaTran 2.0 (Cat# [TT210002]).



Coomassie blue staining of purified HYAL1 protein (Cat# [TP315525]). The protein was produced from HEK293T cells transfected with HYAL1 cDNA clone (Cat# RC215525) using MegaTran 2.0 (Cat# [TT210002]).