

## Product datasheet for RC215521

### CREM (NM\_182771) Human Tagged ORF Clone

#### Product data:

Product Type:	Expression Plasmids
Product Name:	CREM (NM_182771) Human Tagged ORF Clone
Tag:	Myc-DDK
Symbol:	CREM
Synonyms:	CREM-2; hCREM-2; ICER
Mammalian Cell Selection:	Neomycin
Vector:	pCMV6-Entry (PS100001)
E. coli Selection:	Kanamycin (25 ug/mL)
ORF Nucleotide Sequence:	>RC215521 representing NM_182771 Red=Cloning site Blue=ORF Green=Tags(s)

TTTTGTAATACGACTCACTATAGGGCGGCCGGAATTCGTCGACTGGATCCGGTACCGAGGAGATCTGCC  
GCC**CGATCGCC**

ATGTGGTGGCATCAGCATAATCTATGTTTCAGGCGTCCTATAGAAGAGGATTATTCTTCAGGGGATGTGG  
AAGAAAAGGTAGCAGCAATTGCAGAGACAGATGAATCTGCAGAATCAGAAGGTGAATTGATTCTCATAA  
ACGTAGAGAAATCCTTTACGAAGACCCTTTATAGGAAAATACTGAATGAAGTGTCTCTGATGTGCCT  
GGTGTCCCAAGATTGAAGAAGAGAGATCAGAGGAAGAAGGAACACCACCTAGTATTGCTACCATGGCAG  
TACCAACTAGCATATATCAGACTAGCACGGGCAATACATTGCTATAGCCCAAGGTGGAACAATCCAGAT  
TTCTAACCAGGATCTGATGGTGTTCAGGGACTGCAGGCATTAACAATGACAAATTCAGGAGCTCCTCCA  
CCAGGTGCTACAATTGTACAGTACGCAGACAATCAGCTGATGGCACACAGCAGTTCTTTGTCCCAGGCA  
GCCAGGTGTGTTCAAGCTGCCACTGGTGACATGCCAATTACCAGATCCGAGCTCCTACTGCTGCTTT  
GCCACAGGGAGTGGTGTGGCTGCATCGCCGGAAGTTTGACAGTCCCCAGCAGCTGGCAGAAGAAGCA  
ACACGCAAACGAGAGCTGAGGCTAATGAAAAACAGGGAAGCTGCCAAAGAATGTCGACGTCGAAAGAAAG  
AATATGTAATAATGTCTGGAGAGCCGAGTTGCAGTGCTGGAAGTCCAGAACAAGAAGCTTATAGAGGAACT  
TGAACCTTGAAGACATTTGTTCTCCAAAACAGATTAC

**ACGCGT**ACGCGGCCGCTCGAGCAGAAACTCATCTCAGAAGAGGATCTGGCAGCAAATGATATCCTGGATT  
ACAAGGATGACGACGATAAGGTTTAA



[View online »](#)

**Protein Sequence:** >RC215521 representing NM\_182771  
Red=Cloning site Green=Tags(s)

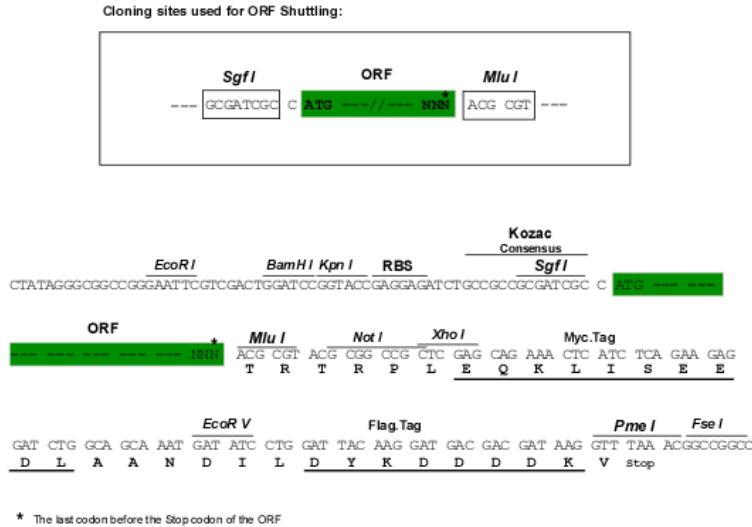
MWWHQHNLCFRRPIEEDYSSGDVEEKVAAIAETDESAESEGVIDSHKRREILSRRPSYRKILNELSSDVP  
 GVPKIEEERSEEEGTPPSIATMAVPTSIYQTSTGQYIAIAQGGTIQISNPGSDGVQGLQALMTNSGAPP  
 PGATIVQYAAQSADGTQQFFVPGSQVVVQAATGDMPTYQIRAPTAALPQGVVMAASPGLHSPQQLAEEA  
 TRKRELRLMKNREAAKECRRRKEYVKCLESRVAVLEVQNKKLEELETLDKIDICSPKTDY

TRTRPLEQKLISEEDLAANDILDYKDDDDKV

**Chromatograms:** [https://cdn.origene.com/chromatograms/mk6097\\_h02.zip](https://cdn.origene.com/chromatograms/mk6097_h02.zip)

**Restriction Sites:** SgfI-MluI

**Cloning Scheme:**



**ACCN:** NM\_182771

**ORF Size:** 810 bp

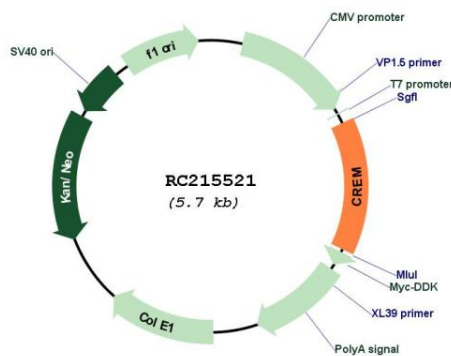
**OTI Disclaimer:** The molecular sequence of this clone aligns with the gene accession number as a point of reference only. However, individual transcript sequences of the same gene can differ through naturally occurring variations (e.g. polymorphisms), each with its own valid existence. This clone is substantially in agreement with the reference, but a complete review of all prevailing variants is recommended prior to use. [More info](#)

**OTI Annotation:** This clone was engineered to express the complete ORF with an expression tag. Expression varies depending on the nature of the gene.

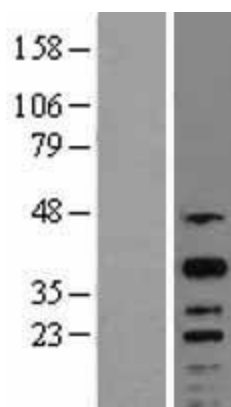
**Components:** The ORF clone is ion-exchange column purified and shipped in a 2D barcoded Matrix tube containing 10ug of transfection-ready, dried plasmid DNA (reconstitute with 100 ul of water).

<b>Reconstitution Method:</b>	<ol style="list-style-type: none"> <li>1. Centrifuge at 5,000xg for 5min.</li> <li>2. Carefully open the tube and add 100ul of sterile water to dissolve the DNA.</li> <li>3. Close the tube and incubate for 10 minutes at room temperature.</li> <li>4. Briefly vortex the tube and then do a quick spin (less than 5000xg) to concentrate the liquid at the bottom.</li> <li>5. Store the suspended plasmid at -20°C. The DNA is stable for at least one year from date of shipping when stored at -20°C.</li> </ol>
<b>RefSeq:</b>	<u>NM_182771.2</u>
<b>RefSeq Size:</b>	2160 bp
<b>RefSeq ORF:</b>	813 bp
<b>Locus ID:</b>	1390
<b>UniProt ID:</b>	<u>Q03060</u>
<b>Cytogenetics:</b>	10p11.21
<b>Protein Families:</b>	Druggable Genome, Transcription Factors
<b>MW:</b>	29.5 kDa
<b>Gene Summary:</b>	<p>This gene encodes a bZIP transcription factor that binds to the cAMP responsive element found in many viral and cellular promoters. It is an important component of cAMP-mediated signal transduction during the spermatogenetic cycle, as well as other complex processes. Alternative promoter and translation initiation site usage allows this gene to exert spatial and temporal specificity to cAMP responsiveness. Multiple alternatively spliced transcript variants encoding several different isoforms have been found for this gene, with some of them functioning as activators and some as repressors of transcription. [provided by RefSeq, Jul 2008]</p>

## Product images:



Circular map for RC215521



Western blot validation of overexpression lysate (Cat# [LY403644]) using anti-DDK antibody (Cat# [TA50011-100]). Left: Cell lysates from untransfected HEK293T cells; Right: Cell lysates from HEK293T cells transfected with RC215521 using transfection reagent MegaTran 2.0 (Cat# [TT210002]).