

## Product datasheet for RC215518

### AAGAB (NM\_024666) Human Tagged ORF Clone

#### Product data:

Product Type:	Expression Plasmids
Product Name:	AAGAB (NM_024666) Human Tagged ORF Clone
Tag:	Myc-DDK
Symbol:	AAGAB
Synonyms:	KPPP1; p34; PPKP1; PPKP1A
Mammalian Cell Selection:	Neomycin
Vector:	pCMV6-Entry (PS100001)
E. coli Selection:	Kanamycin (25 ug/mL)
ORF Nucleotide Sequence:	>RC215518 representing NM_024666 Red=Cloning site Blue=ORF Green=Tags(s)

TTTTGTAATACGACTCACTATAGGGCGCCGGGAATTCGTCGACTGGATCCGGTACCGAGGAGATCTGCC  
GCC**CGATCGCC**

ATGGCTGCTGGCGTACCCTGTGCGTTAGTCACCAGCTGCTCCTCCGTCTTCTCAGGAGACCAGCTGGTCC  
AACATATCCTTGGAACAGAAGATCTTATTGTGGAAGTGACTTCCAATGATGCTGTGAGATTTTATCCCTG  
GACCATGATAATAAATACTATTCAGCAGACATCAATCTATGTGTGGTGCCAAACAAATTTCTTGTACT  
GCAGAGATTGCAGAATCTGTCCAAGCATTGTGGTTTACTTTGACAGCACACAAAAATCGGGCCTTGATA  
GTGTCTCCTCATGGCTTCCACTGGCAAAAGCATGGTTACCTGAGGTGATGATCTTGGTCTGCGATAGAGT  
GTCTGAAGATGGTATAAACCGACAAAAAGCTCAAGAATGGTGATCAAACATGGCTTTGAATTGGTAGAA  
CTTAGTCCAGAGGAGTTGCCGTGAGGAGGATGATGACTTCCAGAATCTACAGGAGTAAAGCGAATTGTCC  
AAGCCCTGAATGCCAATGTGTGGTCCAATGTAGTGATGAAGAATGATAGGAACCAAGGCTTTAGCCTTCT  
CAACTCATTGACTGGAACAAACCATAGCATTGGGTGAGCAGATCCCTGTCACCCAGAGCAACCCATTG  
CCAGCAGCAGATAGTACTGAATCCCTCTCTGATCATCGGGGTGGTGCATCTAACACAACAGATGCCCAGG  
TTGATAGCATTGTGGATCCCATGTTAGATCTGGATATTCAAGAATTAGCCAGTCTTACCACTGGAGGAGG  
AGATGTGGAGAATTTTGAAGACTCTTTCAAAGTTAAAGGAAATGAAAGACAAGGCTGCGACGCTTCT  
CATGAGCAAAGAAAAGTGATGCAGAAAAGGTGGCCAAAGCATTCTGGATGGCAATCGGGGGAGACAGAG  
ATGAAATTGAAGGCCTTTCATCTGATGAAGAGCAC

**ACGCGT**ACGCGGCCGCTCGAGCAGAAACTCATCTCAGAAGAGGATCTGGCAGCAAATGATATCCTGGATT  
ACAAGGATGACGACGATAAGGTTTAA



[View online »](#)

**Protein Sequence:** >RC215518 representing NM\_024666  
Red=Cloning site Green=Tags(s)

MAAGVPCALVTS CSSVFSGDQLVQHILGTEDLIVEVTSNDVRFYPWTIDNKYYSADINLCVVPNKFLVT  
 AEIAESVQAFVVYFDSTQKSGLDVSSWLPLAKAWLPEVMILVCDRVSE DGINRQKAQEWC IKHGFELVE  
 LSPEELPEEDDDFFPESTGVKRI VQALNANVWSNVVMKNDNRNQGFSLLNSLTGTNHSIGSADPCHPEQPHL  
 PAADSTESLS DHRGGASNTTDAQVDSIVDPLMLDLDIQELASLTGGGDVENFERLFSKLEMKDKAATLP  
 HEQRKVHAEKVAKAFWMAIGGDRDEIEGLSSDEEH

TRTRPLEQKLISEEDLAANDILDYKDDDDKV

**Chromatograms:** [https://cdn.origene.com/chromatograms/ja1529\\_f07.zip](https://cdn.origene.com/chromatograms/ja1529_f07.zip)

**Restriction Sites:** SgfI-MluI

**Cloning Scheme:**



**ACCN:** NM\_024666

**ORF Size:** 945 bp

**OTI Disclaimer:** The molecular sequence of this clone aligns with the gene accession number as a point of reference only. However, individual transcript sequences of the same gene can differ through naturally occurring variations (e.g. polymorphisms), each with its own valid existence. This clone is substantially in agreement with the reference, but a complete review of all prevailing variants is recommended prior to use. [More info](#)

**OTI Annotation:** This clone was engineered to express the complete ORF with an expression tag. Expression varies depending on the nature of the gene.

**Components:** The ORF clone is ion-exchange column purified and shipped in a 2D barcoded Matrix tube containing 10ug of transfection-ready, dried plasmid DNA (reconstitute with 100 ul of water).

**Reconstitution Method:**

1. Centrifuge at 5,000xg for 5min.
2. Carefully open the tube and add 100ul of sterile water to dissolve the DNA.
3. Close the tube and incubate for 10 minutes at room temperature.
4. Briefly vortex the tube and then do a quick spin (less than 5000xg) to concentrate the liquid at the bottom.
5. Store the suspended plasmid at -20°C. The DNA is stable for at least one year from date of shipping when stored at -20°C.

**RefSeq:** [NM\\_024666.5](#)

**RefSeq Size:** 2774 bp

**RefSeq ORF:** 948 bp

**Locus ID:** 79719

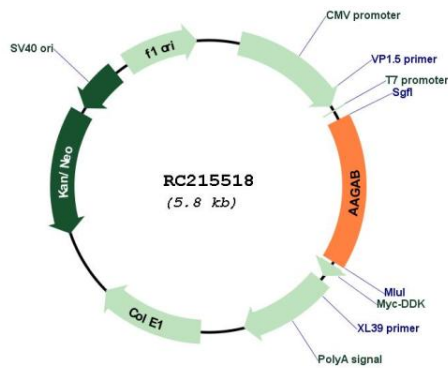
**UniProt ID:** [Q6PD74](#)

**Cytogenetics:** 15q23

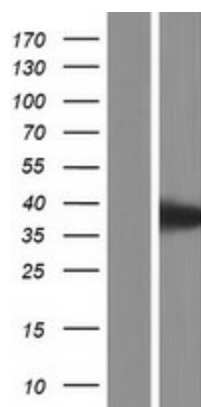
**MW:** 34.4 kDa

**Gene Summary:** The protein encoded by this gene interacts with the gamma-adaptin and alpha-adaptin subunits of complexes involved in clathrin-coated vesicle trafficking. Mutations in this gene are associated with type I punctate palmoplantar keratoderma. Alternatively spliced transcript variants have been found for this gene. [provided by RefSeq, Dec 2012]

### Product images:



Circular map for RC215518



Western blot validation of overexpression lysate (Cat# [LY411182]) using anti-DDK antibody (Cat# [TA50011-100]). Left: Cell lysates from untransfected HEK293T cells; Right: Cell lysates from HEK293T cells transfected with RC215518 using transfection reagent MegaTran 2.0 (Cat# [TT210002]).