

Product datasheet for RC215514

TRPM3 (NM_024971) Human Tagged ORF Clone

Product data:

Product Type:	Expression Plasmids
Product Name:	TRPM3 (NM_024971) Human Tagged ORF Clone
Tag:	Myc-DDK
Symbol:	TRPM3
Synonyms:	GON-2; LTRPC3; MLSN2
Mammalian Cell Selection:	Neomycin
Vector:	pCMV6-Entry (PS100001)
E. coli Selection:	Kanamycin (25 ug/mL)
ORF Nucleotide Sequence:	>RC215514 representing NM_024971 Red=Cloning site Blue=ORF Green=Tags(s)

TTTTGTAATACGACTCACTATAGGGCGGCCGGAATTCGTCGACTGGATCCGGTACCGAGGAGATCTGCC
GCC**CGATCGCC**

ATGTATGTGCGAGTATCTTTTGATACAAAACCTGATCTCCTTTACACCTGATGACCAAGGAATGGCAGT
TGGAGCTTCCCAAGCTTCTCATCTGTCCATGGGGCCGCAGAACTTTGAACTCCAGCCAAAACCTCAA
GCAAGTCTTTGGAAAGGGCTCATCAAAGCAGCAATGACAACCTGGAGCGTGGATATTCAGTGGAGGGTT
AACACAGGTGTTATTCGTCATGTTGGCGATGCCTTGAAGGATCATGCCTTAAGTCTCGAGGAAAGATAT
GCACCATAGGTATTGCCCTGGGAATTGTGGAAAACAGGAGGACCTCATTGGAAGAGATGTTGTCCG
GCCATACAGACCATGTCCAATCCCATGAGCAAGCTCACTGTTCTCAACAGCATGCATCCCACTTCATT
CTGGCTGACAACGGGACCACTGGAAAATATGGAGCAGAGGTGAAACTTCGAAGACAACCTGAAAAGCATA
TTTCACTCCAGAAGATAAACACAAGAATCGGTCAAGGTGTTTCTGTGGTGGCACTCATAGTGAAGGAGG
ACCCAATGTGATCTCGATTGTTTGGAGTACCTTCGAGACACCCCTCCCGTGCCAGTGGTGTCTGTGAT
GGGAGTGGACGGGCATCGGACATCCTGGCCTTTGGGCATAAACTCAGAAGAAGCGGACTGATAAATG
AATCTTTGAGGGACAGCTGTTGGTGACTATACAGAAGACTTTCACATACACTCGAACCAAGCTCAGCA
TCTGTTTCATCCTCATGGAGTGCATGAAGAAGAAGGAATTGATTACGGTATTTTCGGATGGGATCAGAA
GGACACCAGGACATTGATTTGGCTATCCTGACAGCTTTACTCAAAGGAGCCAATGCCTCGGCCCCAGACC
AACTGAGCTTAGCTTTAGCCTGGAACAGAGTCGACATCGCTCGCAGCCAGATCTTTATTTACGGGCAACA
GTGGCCGGTGGGATCTCTGGAGCAAGCCATGTTGGATGCCTTAGTTCTGGACAGAGTGGATTTTGTGAAA
TTACTCATAGAGAATGGAGTAAGCATGCACCGTTTTCTCACCATCTCCAGACTAGAGGAATTGTACAATA
CGAGACATGGGCCCTCAAATACATTGTACCACTTGGTCAGGGATGTCAAAAAGCGAGAGTATCCAGGTTT
CGGTTGGATCTATTTAAGGGGAACCTGCCCCAGACTACAGAATCAGCCTGATTGACATCGGCCTGGT
ATCGAGTACCTGATGGGCGGGCTTATCGCTGCAACTACACGCGCAAGCGCTTCCGGACCTCTACCACA
ACCTCTTCGGCCCAAGAGGCCAAAGCCTTGAAGTCTGGGAATGGAGGATGATATCCCTTGAGGCG
AGGAAGAAGACAACCAAGAAACGTGAAGAAGAGGTGGACATTGACTTGGATGATCCTGAGATCAACCAC



[View online >](#)

TTCCCTTCCCTTCCATGAGCTCATGGTGTGGGCTGTTCTCATGAAGCGGCAGAAGATGGCCCTGTTCT
TCTGGCAGCACGGTGAGGAGGCCATGGCCAAGGCCCTGGTGGCCTGCAAGCTCTGCAAAGCCATGGCTCA
TGAGGCCCTCTGAGAACGACATGGTTGACGACATTTCCAGGAGCTGAATCACAATTCAGAGACTTTGGC
CAGCTGGCTGTGGAGCTCCTGGACCAGTCTACAAGCAGGACGAACAGCTGGCCATGAAACTGCTGACGT
ATGAGCTGAAGAACTGGAGCAACGCCACGTGCCTGCAGCTTGGCGTGGCTGCCAAACACCCGACTTCAT
CGCGCACACGTGCAGCCAGATGCTGCTACCCGACATGTGGATGGCCGGCTCCGCATCGCAAGAACTCA
GGCCTCAAGTAATTCTGGGAATCTACTTCTCCTTCAATTCTCAGCTTGGAGTTCAAGAACAAGACG
ACATGCCCTATATGTCTCAGGCCAGGAAATCCACCTCCAAGAGAAGGAGGCAGAAGAACCAGAGAAGCC
CACAAAGGAAAAAGAGGAAGAGGACATGGAGCTCACAGCAATGTTGGGACGAAACAACGGGGAGTCTCC
AGGAAGAAGGATGAAGAGGAAGTTCAGAGCAAGCACCGTTAATCCCCCTCGGCAGAAAAATCTATGAAT
TCTACAATGCACCCATCGTGAAGTTCTGGTTCTACACACTGGCGTATATCGGATACCTGATGCTCTTCAA
CTATATCGTGTTAGTGAAGATGGAACGCTGGCCGTCCACCCAGGAATGGATCGTAATCTCCTATATTTTC
ACCCTGGGAATAGAAAAGATGAGAGAGATTCTGATGTCAGAGCCAGGGAAGTTGTACAGAAAGTGAAGG
TATGGCTGCAGGAGTACTGGAATGTCACGGACCTCATCGCCATCCTTCTGTTTTCTGTCGGAATGATCCT
TCGTCTCCAAGACCAGCCCTTCAGGAGTGACGGGAGGGTCACTACTGCGTGAACATCATTTACTGGTAT
ATCCGTCTCCTAGACATCTTCGGCGTGAACAAGTATTTGGGCCCGTATGTAATGATGATTGGAAAAATGA
TGATAGACATGATGTAATTTGTCATCATTATGCTGGTGGTTCTGATGAGCTTTGGGGTCGCCAGGCAAGC
CATCCTTTTTCCCAATGAGGAGCCATCATGAAACTGGCCAAGAACATCTTCTACATGCCCTATTGGATG
ATTTATGGGGAAGTGTTCGGGACCAGATAGACCCTCCCTGTGGACAGAAATGAGACCCGAGAGGATGGTA
AAATAATCCAGCTGCCTCCCTGCAAGACAGGAGCTTGGATCGTGCCGGCCATCATGGCCTGCTACCTCTT
AGTGGCAAACATCTTGTGGTCAACCTCCTCATTGCTGTCTTTAAACAATACATTTTTGAAGTAAATCG
ATATCCAACCAAGTCTGGAAGTTTCAGAGGTATCAGCTCATCATGACTTCCATGAAAGGCCAGTTCTGC
CCCCACCACTGATCATCTTCAGCCACATGACCATGATATTCAGCACCTGTGCTGCCGATGGAGAAACA
CGAGAGCGACCCGGATGAAAGGGACTACGGCCTGAAACTCTTATAACCGATGATGAGCTCAAGAAAGTA
CATGACTTTGAAGAGCAATGCATAGAAGAATACTTCAGAGAAAAGGATGATCGGTTCAACTCATCTAATG
ATGAGAGGATACGGGTGACTTCAGAAAGGGTGGAGAACATGTCTATGCGGCTGGAGGAAGTCAACGAGAG
AGAGCACTCCAAGAAGGCTTCACTCCAGACCGTGGACATCCGGCTGGCGCAGCTGGAAGACCTTATCGGG
CGCATGGCCACGGCCCTGGAGCGCTGACAGGTCTGGAGCGGGCCGAGTCCAACAAAATCCGCTCGAGGA
CCTCGTCAAGTGCACGGACGCCGCTACATTGTCGTCAGAGCAGCTTCAACAGCCAGGAAGGGAACAC
CTTCAAGCTCCAAGAGAGTATAGACCCTGCAGGTGAGGAGACCATGTCCCAACTTCTCCAACCTTAATG
CCCCGATGCGAAGCCATTCTTTCTATTCRGTCATATGAAAGACAAAGTGGTATAGAAAAGTTGGAAA
GTATTTTTAAAGAAAGTCCCTGAGCCTACACCGGGCTACTAGTCCCACTCTGTAGCAAAAAGAACCCAA
AGCTCCTGCAGCCCTGCCAACCTTGGCCATTGTTCTGATTCCAGAAGACCATCATCGTGTATAGAC
ATCTATGTCTCTGCTATGGATGAGCTCCACTGTGATATAGACCCTCTGGACAATTCGGTGAACATCCTTG
GGCTAGGCGAGCCAAGCTTTTCAACTCCAGTACCTTCCACAGCCCTTCAAGTAGTGCCTATGCAACACT
TGCACCCACAGACAGACCTCCAAGCCGGAGCATTGATTTTGGAGACATCACCTCCATGGACACTAGATCT
TTTTCTCAGACTACACCACCTCCAGAATGCCAAAACCCCTGGGACTCAGAGCCTCCGATGTACCACA
CCATTGAGCGTTCCAAAAGTAGCCGCTACCTAGCCACCACACCTTTCTTCTAGAAGAGGCTCCCATTGT
GAAATCTCATAGCTTTATGTTTTCCCTCAAGGAGCTATTATGCCAACTTTGGGGTGCCTGTAAAAACA
GCAGAATACACAAGTATTACAGACTGTATTGACACAAGGTGTGCAATGCCCTCAAGCAATTGCGGACA
GAGCTGCCTTCCCTGGAGGTCTTGGAGACAAAGTGGAGGACTTAACCTGCTGCCATCCAGAGCGAGAAGC
AGAAGTGAAGTACCCAGCTCTGACAGTGAAGGAGAAATGAGGCCAAAGGCCGAGACCCATTGCAATA
TCCTCCCAGGAGGGTGAATACTCAGAGAGAACCCTGTCCAACAACATCACTGTTCCCAAGATAGAGCGCG
CCAACAGTACTCGGCAGAGGAGCAAGTGCGCCATATGCACACACCAGGAAGAGCTTCTCCATCAGTGA
CAAACCTGACAGGCGGAAACACAGCAAGCCTGCAAAAATCCCTTCCAGAGAAGCAAGTCTCCAAGCCG
GAGGGCCGAGGGACAGCCTGTCCATGAGGAGACTGTCCAGAACATCGGCTTTCAAAGCTTTGAAAGCA
AGCACAAC

ACGCGTACGCGGCCGCTCGAGCAGAAACTCATCTCAGAAGAGGATCTGGCAGCAAATGATATCCTGGATT
ACAAGGATGACGACGATAAGGTTTAA

Protein Sequence: >RC215514 representing NM_024971
 Red=Cloning site Green=Tags(s)

MYVRVSDTKPDLHLMTKEWQLELPKLLISVHGGLQNFELQPKLKQVFGKGLIKAAMTTGAWIFTGGV
 NTGVIHVGDALDHDASKSRGICTIGIAPWGIENQEDLIGRDVVRPYQTMSPMSKLTVLNSMHSFI
 LADNGTTGKYGAEVKLRRLQLEKHSIQKINTRIGQGVVVALIVEGGPNVISIVLEYLRDTPPVVVVCD
 GSGRASDILAFGHKYSEEGGLINESLRDQLLVTIQKFTTYTRTQAQHLFIILMECKKKELITVFRMGSE
 GHQDIDLAILTALLKGANASAPDQLSLALAWNRVDIARSQFIYQQWPVGSLEQAMLDALVLDREVDFVK
 LLIEVSMHRFLTISRLEELYNRHGPSNTLYHLVRDVKREYPGFGWIYFKGNLPPDYRISLIDIGLV
 IEYLMGGAYRCNYTRKFRFLYHNLFGPKRPKALKLLGMEDDIPLRRGRKTTKKREEEVDIDLDPEINH
 FPFPFHELMVWAVLMKRQKMAFFWQHGEEMAKALVACKLCKAMAHEASENDMVDDISQELNHNSRDFG
 QLAVELLDQSYKQDEQLAMKLLTYELKNWSNATCLQAVAAKHRDFAHTCSQMLLDMWMLRMRKNS
 GLKVLIGILLPPSILSLEFKNKDDMPYMSQAQEIHLQEKEAEEPEKPTKEKEEEMELTAMLGRNNGESS
 RKKDEEEVQSKHRLIPLGRKIYEFYNAPIVKFWFYTLAYIGYLMFNVIYLVKMERWPSTQEWIVISYIF
 TLGIEKREILMSEPGKLLQKVKVWLQYWNVTDLIAILLFSVGMILRLQDQPFSDGRVIYCVNIIYWY
 IRLLDIFGVNKYLGPIVMMIGKMMIDMMYFVIIMLVVLSFGVARQAIFPNEEPSWKLAKNIFMPYWM
 IYGEVFAQDIPPCGQNETREDGKIIQLPPCKTGAWIVPAIMACYLLVANILLVNLIIAVFNNTFFEVKS
 ISNQVWKFQRYQLIMTFHERPVLPPPLIIFSHMTMIFQHLCCRWRKHESDPDERDYGLKLFITDDELKVV
 HDFEEQCIEEYFREKDDRFNSSNDERIRVTSERVENMSMRLEEVENEREHSMKASLQTVDIRLAQLEDLIG
 RMATALERLTGLERAESNKIRSRTSSDCTAAAYIVRQSSFNSEQGNTFKLQESIDPAGEETMSPTPTLM
 PRMRSHSFYXVNMKDKGGIEKLESIFKERSLSHRATSSHVAKEPKAPAAPANTLAIVPDSRRPSSCID
 IYVSAMDELHCDIDPLDNSVNIILGLGEPFSFSTPVPSTAPSSAYATLAPTDRPPSRSIDFEDITSMDTRS
 FSSDYTHLPECQNPWDSEPPMYHTIERSKSSRYLATTPLLEEAPIVKSHSFMFSPSRSYANFGVVPVKT
 AEYTSITDCIDTRCVNAPQAIADRAAFPGLGDKVEDLTCCHPEREAELSHPSSEENEAKGRRATIAI
 SSQEGDNSERTLSNNITVPKIERANSYSAEEPSAPYAHTRKFSISDKLDRQRNTASLQNPFRSKSSKP
 EGRGDSLMSRRLSRTSAFQSFESKHN

TRTRPLEQKLISEEDLAANDILDYKDDDDKV

Chromatograms: https://cdn.origene.com/chromatograms/mg4931_e02.zip

Restriction Sites: SgfI-MluI

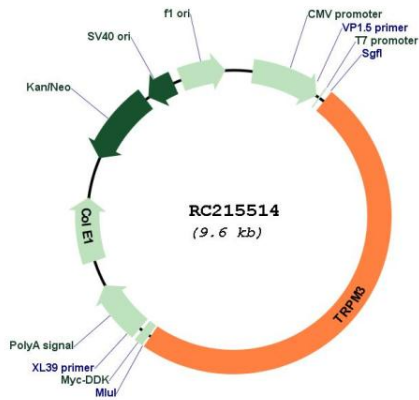
Cloning Scheme:



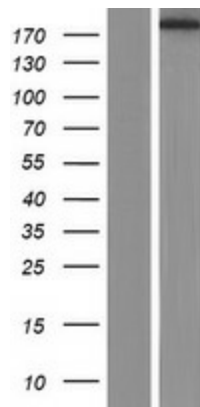
ACCN: NM_024971

ORF Size:	4698 bp
OTI Disclaimer:	The molecular sequence of this clone aligns with the gene accession number as a point of reference only. However, individual transcript sequences of the same gene can differ through naturally occurring variations (e.g. polymorphisms), each with its own valid existence. This clone is substantially in agreement with the reference, but a complete review of all prevailing variants is recommended prior to use. More info
OTI Annotation:	This clone was engineered to express the complete ORF with an expression tag. Expression varies depending on the nature of the gene.
Components:	The ORF clone is ion-exchange column purified and shipped in a 2D barcoded Matrix tube containing 10ug of transfection-ready, dried plasmid DNA (reconstitute with 100 ul of water).
Reconstitution Method:	<ol style="list-style-type: none">1. Centrifuge at 5,000xg for 5min.2. Carefully open the tube and add 100ul of sterile water to dissolve the DNA.3. Close the tube and incubate for 10 minutes at room temperature.4. Briefly vortex the tube and then do a quick spin (less than 5000xg) to concentrate the liquid at the bottom.5. Store the suspended plasmid at -20°C. The DNA is stable for at least one year from date of shipping when stored at -20°C.
RefSeq:	NM_024971.6
RefSeq Size:	5977 bp
RefSeq ORF:	4701 bp
Locus ID:	80036
Cytogenetics:	9q21.12-q21.13
Protein Families:	Druggable Genome, Ion Channels: Transient receptor potential, Transmembrane
MW:	178.7 kDa
Gene Summary:	The product of this gene belongs to the family of transient receptor potential (TRP) channels. TRP channels are cation-selective channels important for cellular calcium signaling and homeostasis. The protein encoded by this gene mediates calcium entry, and this entry is potentiated by calcium store depletion. Alternatively spliced transcript variants encoding different isoforms have been identified. [provided by RefSeq, Jul 2008]

Product images:



Circular map for RC215514



Western blot validation of overexpression lysate (Cat# [LY410938]) using anti-DDK antibody (Cat# [TA50011-100]). Left: Cell lysates from untransfected HEK293T cells; Right: Cell lysates from HEK293T cells transfected with RC215514 using transfection reagent MegaTran 2.0 (Cat# [TT210002]).