

Product datasheet for **RC215504**

ARL5A (NM_012097) Human Tagged ORF Clone

Product data:

Product Type: Expression Plasmids
Product Name: ARL5A (NM_012097) Human Tagged ORF Clone
Tag: Myc-DDK
Symbol: ARL5A
Synonyms: ARFLP5; ARL5
Mammalian Cell Selection: Neomycin
Vector: pCMV6-Entry (PS100001)
E. coli Selection: Kanamycin (25 ug/mL)
ORF Nucleotide Sequence: >RC215504 ORF sequence
Red=Cloning site Blue=ORF Green=Tags(s)

TTTTGTAATACGACTCACTATAGGGCGGCCGGAATTCGTCGACTGGATCCGGTACCGAGGAGATCTGCC
GCC**CGATCGCC**

ATGGGAATTCTTCTCACTAGAATATGGAGACTGTTCAATCACCAGGAGCACAAAGTTATCATTGTTGGGC
TGGATAATGCAGGGAAAACCTACCATTCTTTACCAATTTTCTATGAATGAAGTTGTACATACATCTCCTAC
AATAGGAAGTAAATGTAGAAGAGATAGTGATTAATAATACACGTTTCTAATGTGGGATATTGGTGGCCAA
GAATCTCTTCGTTCTTCTGGAACCTTACTATACTAACACAGAGTTTGAATAGTTGTTGTGGACAGTA
CAGACAGAGAGAGATTTCTGTAAGTAGAGAAGAACTCTATAAAATGTTAGCGCATGAGGACCTAAGAAA
AGCTGGATTGCTGATTTTGTCTAATAAACAAGATGTTAAAGAATGCATGACTGTAGCAGAAATCTCCAG
TTTTTGAAGCTAACTTCTATTAAGATCACCAGTGGCATATCCAGGCATGCTGTGCTCTAACTGGCGAGG
GATTGTGCCAAGGACTTGAATGGATGATGTCACGACTTAAGATTAGA

ACGCGTACGCGGCCGCTCGAGCAGAACTCATCTCAGAAGAGGATCTGGCAGCAAATGATATCCTGGATT
ACAAGGATGACGACGATAAGGTTTAA

Protein Sequence: >RC215504 protein sequence
Red=Cloning site Green=Tags(s)

MGILFTRIWRFLFNHQEHKVIIVGLDNAGKTTILYQFSMNEVVHTSPTIGSNVEEIVINNTRFLMWDIGGQ
ESLRSSWNTYYNTEFVIVVVDSTDRERISVTREELYKMLAHEDLRKAGLLIFANKQDVKECMTVAEISQ
FLKLTSIKDHQWHIQACCALTGEGLCQGLEWMSRLKIR

TRTRPLEQKLISEEDLAANDILDYKDDDDKV

Chromatograms: https://cdn.origene.com/chromatograms/mk6300_d07.zip



[View online »](#)

Restriction Sites: SgfI-MluI

Cloning Scheme:



ACCN: NM_012097

ORF Size: 537 bp

OTI Disclaimer: The molecular sequence of this clone aligns with the gene accession number as a point of reference only. However, individual transcript sequences of the same gene can differ through naturally occurring variations (e.g. polymorphisms), each with its own valid existence. This clone is substantially in agreement with the reference, but a complete review of all prevailing variants is recommended prior to use. [More info](#)

OTI Annotation: This clone was engineered to express the complete ORF with an expression tag. Expression varies depending on the nature of the gene.

Components: The ORF clone is ion-exchange column purified and shipped in a 2D barcoded Matrix tube containing 10ug of transfection-ready, dried plasmid DNA (reconstitute with 100 ul of water).

Reconstitution Method:

1. Centrifuge at 5,000xg for 5min.
2. Carefully open the tube and add 100ul of sterile water to dissolve the DNA.
3. Close the tube and incubate for 10 minutes at room temperature.
4. Briefly vortex the tube and then do a quick spin (less than 5000xg) to concentrate the liquid at the bottom.
5. Store the suspended plasmid at -20°C. The DNA is stable for at least one year from date of shipping when stored at -20°C.

RefSeq: [NM_012097.4](#)

RefSeq Size: 3169 bp

RefSeq ORF: 540 bp

Locus ID: 26225

UniProt ID: [Q9Y689](#)

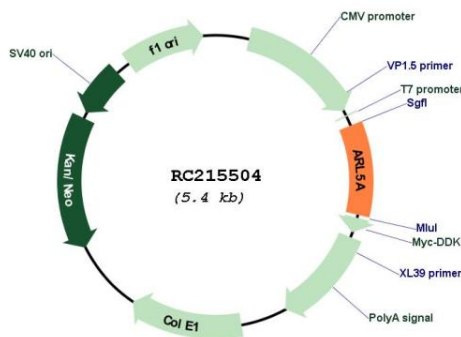
Cytogenetics: 2q23.3

Domains: SAR, ARF, arf

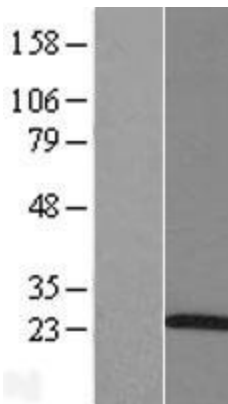
MW: 20.7 kDa

Gene Summary: The protein encoded by this gene belongs to the ARF family of GTP-binding proteins. With its distinctive nuclear/nucleolar localization and interaction with HP1alpha, the protein is developmentally regulated and may play a role(s) in nuclear dynamics and/or signaling cascades during embryonic development. Alternative splicing results in multiple transcript variants encoding different isoforms. This gene has multiple pseudogenes. [provided by RefSeq, Jul 2008]

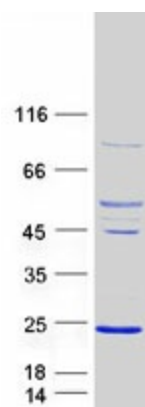
Product images:



Circular map for RC215504



Western blot validation of overexpression lysate (Cat# [LY415981]) using anti-DDK antibody (Cat# [TA50011-100]). Left: Cell lysates from untransfected HEK293T cells; Right: Cell lysates from HEK293T cells transfected with RC215504 using transfection reagent MegaTran 2.0 (Cat# [TT210002]).



Coomassie blue staining of purified ARL5A protein (Cat# [TP315504]). The protein was produced from HEK293T cells transfected with ARL5A cDNA clone (Cat# RC215504) using MegaTran 2.0 (Cat# [TT210002]).