

Product datasheet for **RC215496**

STK23 (SRPK3) (NM_014370) Human Tagged ORF Clone

Product data:

Product Type:	Expression Plasmids
Product Name:	STK23 (SRPK3) (NM_014370) Human Tagged ORF Clone
Tag:	Myc-DDK
Symbol:	STK23
Synonyms:	MSSK-1; MSSK1; STK23
Mammalian Cell Selection:	Neomycin
Vector:	pCMV6-Entry (PS100001)
E. coli Selection:	Kanamycin (25 ug/mL)



[View online »](#)

ORF Nucleotide Sequence:

>RC215496 ORF sequence
 Red=Cloning site Blue=ORF Green=Tags(s)

TTTTGTAATACGACTCACTATAGGGCGGCCGGGAATTCGTCGACTGGATCCGGTACCGAGGAGATCTGCC
 GCC**GCGATCGCC**

ATGAGCGCCAGCACGGGCGGTGGTGGGGACAGCGCGGCAGCGGCGCAGTAGCAGCAGCTCACAGGCC
 CCTGCGGGCCGAGTCTCGGGCTCCGAACTAGCCCTGGCCACACCGGTGCCTCAGATGCTGCAGGGCCT
 TCTGGGCTCCGACGACGAGGAACAGGAAGACCCCAAAGACTACTGCAAGGGCGGCTACCACCCTGTGAAG
 ATCGGCGACGTGTTCAATGGGCGGTACCACGTGGTGCGCAAAGTGGGCTGGGGCCACTTCTCCACCGTCT
 GGCTCTGCTGGGACATCCAGCGCAAGCGCTTTGTGGCCCTCAAAGTGGTGAAGAGTGCAGGGCATTACAC
 GGAGACAGCTGTGGATGAGATCAAGCTCCTGAAATGTGTCCGGGACAGCGACCCCAAGTACCCCAAAAGA
 GAGACCATTGTCCAGCTCATTGATGACTTCAGGATCTCAGGAGTCAATGGAGTCCATGTGTGCATGGTGC
 TGGAGGTGCTGGGCCACCAGCTCCTCAAATGGATCATCAAGTCCAAGTACCAGGGCCTGCCCGTGCCTG
 CGTGAAGAGCATCGTGAGGCAGGTGCTGCACGGCCTGGACTACCTCCACACCAAGTGAAGATCATCCAC
 ACGGACATCAAGCCCAGAACATCTTGCTGTGTGTGGGGACGCTTACATCAGGGCCTGGCTGCCGAGG
 CCACGGAGTGGCAACAGGCAGGGGCGCCGCCCCCTCCCGCTCCATAGTCAGCACTGCCCCCAAGGAGT
 CTTGCAGACCGGTAAGCTGTCCAAAAACAAGAGGAAGAAGATGAGGCGCAAAACGGAAACAGCAGAAGCGG
 CTGCTGGAGGAGCGGCTGCGGGACCTGCAGAGGCTGGAGGCCATGGAGGCTGCCACCCAGGCTGAGGACT
 CTGGCTTGAGACTAGACGGGGCAGCGGCTCCACATCCTTTCAGGCTGTACCCCGGGGGCGCCAGAGC
 AGGTCCCTCCCAGCCTTCTCCTCCCGCCCGGGGGCGGCCGTAGCCTCAGCGGGGCTCACAGACC
 TCAGGCTTCTCCGGTCCCTCTTCTCCTCCTGCTCCTGCTCCATCCTCTCCGGCTCGTCCAATCAGCGAG
 AGACCGGGGCTCCTGTCCGCTAGCACACCATTCGGTGCCTCGAACCTCCTGGTGAACCCCTGGAGCC
 CCAAAATGCAGATAAGATCAAGATCAAGATCGCAGACTGGGCAACGCCTGCTGGGTGCACAAGCACTTC
 ACGGAAGACATCCAGACTCGGCAGTACCGGGCCGTCGAGGTGCTGATCGGCGCCGAATACGGCCCCCGG
 CAGACATCTGGAGCACAGCCTGCATGGCCTTCGAGCTGGCCACTGGTACTACTGTTTCGAGCCGCAATC
 TGGAGAAGACTACAGTCTGATGAGGACCACATCGCTCACATAGTGGAGCTTCTGGGGGACATCCCCCA
 GCCTTCGCCCTCTCAGGCCGCTATTCCCGGAGTTCTTCAACCGGAGAGGAGAGCTGCGGCACATCCACA
 ATCTCAAGCACTGGGCTGTACGAGGTACTCATGAAAAGTACGAGTGGCCCTAGAGCAGGCCACACA
 GTTCAGCGCCTTCTGCTGCCATGATGGAGTACATCCCCGAAAAGCGGGCCAGTGCCGCTGACTGCCTC
 CAGCACCCCTGGCTCAACCC

ACGCGTACGCGGGCCGCTCGAGCAGAAACTCATCTCAGAAGAGGATCTGGCAGCAAATGATATCCTGGATT
 ACAAGGATGACGACGATAAGGTTTAA

Protein Sequence:

>RC215496 protein sequence
 Red=Cloning site Green=Tags(s)

MSASTGGGDSGGSGSSSSQASCGPESSELALATPVPQMLQGLLGSDDDEEQEDPKDYCKGGYHPVK
 IGDVFNTRYHVVRKLGWGHFSTVWLCWDIQRKRFVALKVVKSAHYTETAVDEIKLLKVRSDPSDPKR
 ETIVQLIDDFRISGVNNGVHVMVLEVLGHQLLKWIIKSNYQGLPVPVKSIVRQVLHGLDYLHTKCKIIH
 TDIKPENILLCVGDAYIRRLAAEATEWQQAGAPPSRSIVSTAPQEVLTGKLSKNKRKMRKRKQQR
 LLEERLRLQRLEAMEAATQAEDSGLRLDGGSGTSSSGCHPGGARAGSPASSPAPGGGRSLSAGSQT
 SGFSGSLFSPASCILSGSSNQRETGLLSPSTPFGASNLLVNPLEPQNADKIKIKIADLGNACWVHKHF
 TEDIQTRQYRAVEVLIGAEYGPADIWSTACMAFELATGDYLFEPHSGEDYSRDEDHIAHIVELLGDIPP
 AFALSGRYSREFFNRRGELRHIHNLKHWGLYEVLMEKYEWPLEQATQFSAFLLPMMEYIPEKRASAADCL
 QHPWLN

TRTRPLEQKLISEEDLAANDILDYKDDDDKV

Chromatograms:

https://cdn.origene.com/chromatograms/mk6604_b07.zip

Restriction Sites:

Sgfl-Mlul

Cloning Scheme:


ACCN: NM_014370

ORF Size: 1701 bp

OTI Disclaimer: The molecular sequence of this clone aligns with the gene accession number as a point of reference only. However, individual transcript sequences of the same gene can differ through naturally occurring variations (e.g. polymorphisms), each with its own valid existence. This clone is substantially in agreement with the reference, but a complete review of all prevailing variants is recommended prior to use. [More info](#)

OTI Annotation: This clone was engineered to express the complete ORF with an expression tag. Expression varies depending on the nature of the gene.

Components: The ORF clone is ion-exchange column purified and shipped in a 2D barcoded Matrix tube containing 10ug of transfection-ready, dried plasmid DNA (reconstitute with 100 ul of water).

- Reconstitution Method:**
1. Centrifuge at 5,000xg for 5min.
 2. Carefully open the tube and add 100ul of sterile water to dissolve the DNA.
 3. Close the tube and incubate for 10 minutes at room temperature.
 4. Briefly vortex the tube and then do a quick spin (less than 5000xg) to concentrate the liquid at the bottom.
 5. Store the suspended plasmid at -20°C. The DNA is stable for at least one year from date of shipping when stored at -20°C.

RefSeq: [NM_014370.2](#), [NP_055185.2](#)

RefSeq Size: 2014 bp

RefSeq ORF: 1704 bp

Locus ID: 26576

UniProt ID: [Q9UPE1](#)

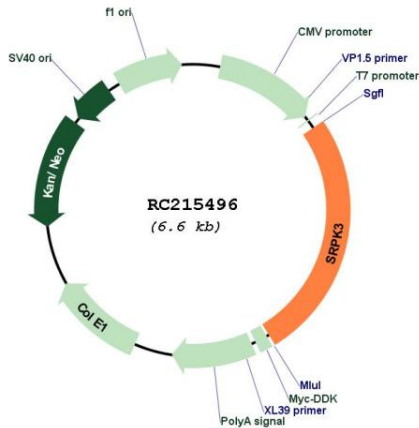
Cytogenetics: Xq28

Protein Families: Druggable Genome, Protein Kinase

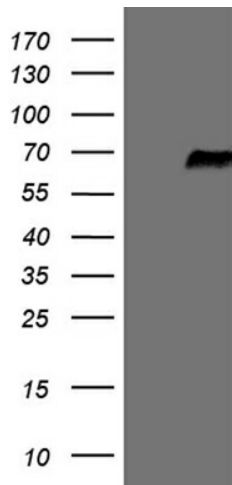
MW: 62 kDa

Gene Summary: This gene encodes a protein kinase similar to a protein kinase which is specific for the SR (serine/arginine-rich domain) family of splicing factors. A highly similar protein has been shown to play a role in muscle development in mice. Multiple transcript variants encoding different isoforms have been found for this gene. [provided by RefSeq, Dec 2009]

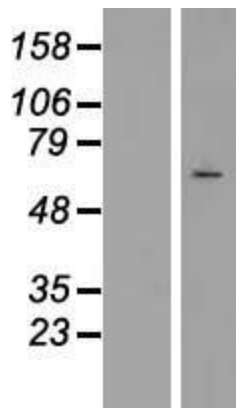
Product images:



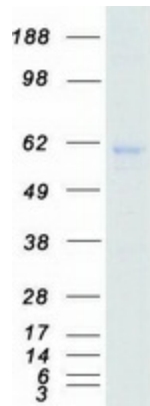
Circular map for RC215496



HEK293T cells were transfected with the pCMV6-ENTRY control (Cat# [PS100001], Left lane) or pCMV6-ENTRY SRPK3 (Cat# RC215496, Right lane) cDNA for 48 hrs and lysed. Equivalent amounts of cell lysates (5 ug per lane) were separated by SDS-PAGE and immunoblotted with anti-SRPK3 (Cat# [TA809462])(1:2000). Positive lysates [LY415334] (100ug) and [LC415334] (20ug) can be purchased separately from OriGene.



Western blot validation of overexpression lysate (Cat# [LY415334]) using anti-DDK antibody (Cat# [TA50011-100]). Left: Cell lysates from untransfected HEK293T cells; Right: Cell lysates from HEK293T cells transfected with RC215496 using transfection reagent MegaTran 2.0 (Cat# [TT210002]).



Coomassie blue staining of purified SRPK3 protein (Cat# [TP315496]). The protein was produced from HEK293T cells transfected with SRPK3 cDNA clone (Cat# RC215496) using MegaTran 2.0 (Cat# [TT210002]).