

Product datasheet for RC215495

AGL (NM_000028) Human Tagged ORF Clone

Product data:

Product Type:	Expression Plasmids
Product Name:	AGL (NM_000028) Human Tagged ORF Clone
Tag:	Myc-DDK
Symbol:	AGL
Synonyms:	GDE
Mammalian Cell Selection:	Neomycin
Vector:	pCMV6-Entry (PS100001)
E. coli Selection:	Kanamycin (25 ug/mL)
ORF Nucleotide Sequence:	>RC215495 representing NM_000028 Red=Cloning site Blue=ORF Green=Tags(s)

TTTTGTAATACGACTCACTATAGGGCGGCCGGAATTCGTCGACTGGATCCGGTACCGAGGAGATCTGCC
GCC**CGATCGCC**

ATGGGACACAGTAAACAGATTCTGAATTTACTTCTGAACGAAATGGAGAACTGGAAAAGACCCTTTCAGACTTGAACAAGGGTATGAGCTACAGTCCGATTAGGCCCACTTACAGGAAAAGCAGTTACCGTGTA
TACAAATTACCCATTTCTGGAGAAACATTTAATAGAGAAAAATCCGTTCTCTGGATTGGGAAAATCCA
ACAGAAAGAGAAGATGATTCTGATAAATCTGAACTTAATCTGCAACAATCTGGTTCATTTAGTATT
ATTTCTTCAAGGAAATGAGAAAAGTGGTGGAGGTTACATAGTTGTGGACCCATTTTACGTGTTGGTGC
TGATAATCATGTGCTACCCTGGACTGTGTTACTTTCAGACATTTTAGCTAAGTGTGGGACCTTTT
GATGAATGGGAAAGCAGACTTAGGGTTGCAAAAAGAAATCAGGCTACAACATGATTCATTTTACCCATTGC
AGACTCTTGGACTATCTAGGTGCTGCTACTCCCTTGCCAAATCAGTTAGAATTAATCCTGACTTTTCAAG
ACCTAATAGAAAGTATACCTGGAATGATGTTGGACAGCTAGTGGAAAAATTAATAAGGAATGGAATGTT
ATTTGTATTACTGATGTTGCTCAATCATACTGCTGCTAATAGTAAATGGATCCAGGAACATCCAGAAAT
GTGCTATAATCTGTGAATCTCCACTTAAACCTGCCTGGGCTTAGACAGAGCACTTTGGCGTTT
CTCCTGTGATGTTGCAGAAGGAAATACAAAGAAAAGGAATACCTGCTTTGATTGAAAATGATCACCAT
ATGAATTCATCCGAAAATAATTTGGGAGGATATTTTCCAAAGCTTAACTCTGGGAATTTTCCAAAG
TAGATGTCAACAAAGCGTTGAGCAATTTAGAAGACTTCTTACACAAGAAAATAGGCGAGTAACCAAGTC
TGATCCAAACCAACACCTTACGATTATTCAAGATCCTGAATACAGACGGTTTGGCTGACTGTAGATATG
AACATTGCACTAACGACTTTCATACCACATGACAAGGGGCCAGCAGCAATTGAAGAATGCTGTAATTTGGT
TTCATAAAGAATGGAGGAATTAATTCAGAGAAGCATCGACTCATTAATCATCAGGAACAGGCAGT
TAATTGCCTTTTGGGAAATGTGTTTTATGAACGACTGGCTGGCCATGGTCCAAAAGTGGACCTGCTACT
AGAAAGCATCCTTTAGTTACCAGGATTTTACTTTCCATTTGAAGAGATAGACTTCTCCATGGAAGAAT
CTATGATTCATCTGCCAAATAAAGCTTGTCTGATGGCACACAATGGATGGGTAAATGGGAGATGATCC
TCTTCAAACCTTCTGTAACCGGTTTCAAGTTTACCTAAGGAGAGAATTTTCTGGGAGACAGT



[View online »](#)

GTAAATTACGCTATGGGAATAAACAGAGGACTGTCCTTATCTCTGGGCACACATGAAAAATACACTG
AAATAACTGCACTTATTTCCAGGGAGTACGTCTTGATAACTGCCACTCAACACCTCTTCACGTAGCTGA
GTACATGTTGGATGCTGCTAGGAATTTGCAACCAATTTATATGTAGTAGCTGAACTGTTACAGGAAGT
GAAGATCTGGACAATGCTTTGTTACTAGACTGGGCATTAGTTCCTTAATAAGAGAGGCAATGAGTGCAT
ATAATAGTCATGAAGAGGGCAGATTAGTTTACCAGATATGGAGGAGAACCTGTTGGATCCTTTGTTACGCC
CTGTTTGGAGCCTTTAAATGCCAGCTATTGCACATGCCCTGTTTATGGATATTACGCATGATAATGAGTGT
CCTATTGTGCATAGATCAGCGTATGATGCTCTTCCAAGTACTACAATTGTTTCTATGGCATGTTGTGCTA
GTGGAAGTACAAGAGGCTATGATGAATTAGTGCCCTCATCAGATTTCAAGTGGTTTCTGAAGAACGGTTTTA
CACTAAGTGAATCCTGAAGCATTGCCCTCAAACACAGGTGAAGTTAATTTCAAAGCGGCATTATTGCA
GCCAGGTGTGCTATCAGTAACTTCATCAGGAGCTTGGAGCCAAGGGTTTTATTACAGGTGTATGTGGATC
AAGTTGATGAAGACATAGTGGCAGTAACAAGACTCACCTAGCATCCATCAGTCTGTTGTGGCTGTATC
TAGAACTGCTTTCAGGAATCCCAAGACTTCATTTTACAGCAAGGAAGTGCCTCAAATGTGCATCCCTGGC
AAAATTGAAGAAGTAGTCTTGAAGCTAGAATTTGAGAGAAACACGAAACCTTATAGGAAGGATGAGA
ATTCATCAATGGAACACCAGATATCACAGTAGAAATAGAGAACATATTCAGCTTAATGAAAGTAAAA
TGTTAAACAAGCTGGAGTTGCCACAAAAGGGCCCAATGAATATATTCAAGAAATAGAATTTGAAAACCTG
TCTCCAGGAAGTGTATTATATTAGAGTTAGTCTTGATCCACATGCACAAGTCCGCTGTTGGAAATCTTC
GAAATCATCTGACACAATTCAGTCCCTCACTTTAAATCTGGCAGCCTAGCTGTTGACAATGCAGATCCAT
ATTAATAATTCCTTTTGCTTCTCTTGCCTCCAGATTAACCTTTGGCTGAGCTAAATCAGATCCTTTACCGA
TGTGAATCAGAAGAAAAGGAAGATGGTGGAGGGTGCTATGACATACCAAACCTGGTCCAGCCCTTAAATATG
CAGGCTTCAAGGTTTAAATGCTGTATTGGCAGAAATAAGACCAAAGAATGACTTGGGGCATCCTTTTTG
TAATAATTTGAGATCTGGAGATTGGATGATTGACTATGTCAGTAAACCGGCTTATTCACGATCAGGAAT
ATTGCTGAAGTTGGTAAATGGTGCAGGCTATGTTCTTACCTGAAGCAGATCCACGTTACCTTATCC
CATGTTACTTTGATGCTATATTAATTTGGTGCATATACCCTCTTCTGGATACAGCATGGAAGCAGATGTC
AAGCTTTGTTTCAAGTGGTTCAACCTTTGTGAAACACCTTTTATTGGGTTCAAGTCAACTGTGGAGTA
GGAAAATTCCTTCCCTGCCAATCTTTTACCTGCCCTAATGGATGTACCTTATAGGTTAAATGAGATCA
CAAAAGAAAAGGAGCAATGTTGTGTTTCTCTAGCTGCAGGCTTACCTCATTTTTCTTCTGGTATTTTCCG
CTGCTGGGAAGGGATACTTTTATTGCACTTAGAGGTACTGCTGATTACTGGACGCTATGTAGAAGCC
AGGAATATTTTTAGCATTGCGGGTACCCTGAGGCATGGTCTCATTCTAATCTACTGGGTGAAGGAA
TTTTATGCCAGATACAATGTCCGGATGCTGTGTGGTGGTGGCTGCAGTGTATCCAGGATTACTGAAAA
GGTTCAAATGGTCTAGACATTTCAAGTGCCAGTTTCCAGAATGTATCCTACAGATGATTCTGCTCCT
TTGCCCTGCTGGCACACTGGATCAGCCATTGTTTGAAGTCATACAGGAAGCAATGCAAAAACACATGCAGG
GCATACAGTTCCGAGAAAAGGAATGCTGGTCCCCAGATAGATCGAAACATGAAGGACGAAGGTTTTAATAT
AACTGCAGGAGTTGATGAAGAAACAGGATTTGTTTATGGAGGAAATCGTTTCAATTGTGGCACATGGATG
GATAAAATGGGAGAAAGTACAGAGCTAGAAAACAGAGGAATCCCAGCCACACCAAGAGATGGGTCTGCTG
TGGAAATGTGGGCTGAGTAAATCTGCTGTTGCTGGTGTGCTGGAAATTCAAAAAAAATATTTTCCC
TTATCATGAAGTCACAGTAAAAAGACATGGAAAGGCTATAAAGGTCTCATATGATGAGTGGAACAGAAAA
ATACAAGACAACCTTTGAAAAGCTATTTTCAATGTTTCCGAAGACCCTTCAAGTTTAAATGAAAAGCATCCAA
ATCTGGTTCACAAACGTGGCATAACAAGATAGTTATGGAGCTTCAAGTCCCTGGTGTGACTATCAGCT
CAGGCCTAATTTTACCATAGCAATGGTTGTGGCCCTGAGCTTTTACTACAGAAAAGCATGGAAGCT
TTGGAGATTGCAGAAAAAAAATGCTTGGTCCCCTTGGCATGAAAACTTATAGATCCAGATGATATGGTTT
ACTGTGGAATTTATGACAATGCATTAGACAATGACAACACTACAATCTTGCTAAAGGTTTCAATTTATACCA
AGGACCTGAGTGGCTGTGGCCTATTGGGTATTTTCTCGTGCAAAAATATATTTTCCAGATTGATGGGC
CCGGAGACTACTGCAAAGACTATAGTTTGGTTAAAAATGTTCTTTCCCGACATTATGTTTCATCTTGAGA
GATCCCCTTGGAAAGGACTTCCAGAAGTACCAATGAGAATGCCAGTACTGTCTTTTCCAGCTGTGAAAC
ACAAGCTGGTCAATTGCTACTATTCTTGGACACTTTTATGATTTA

ACGCGTACGCGGCCGCTCGAGCAGAACTCATCTCAGAAGAGGATCTGGCAGCAATGATATCCTGGATT
ACAAGGATGACGACGATAAGGTTTAA

Protein Sequence: >RC215495 representing NM_000028
 Red=Cloning site Green=Tags(s)

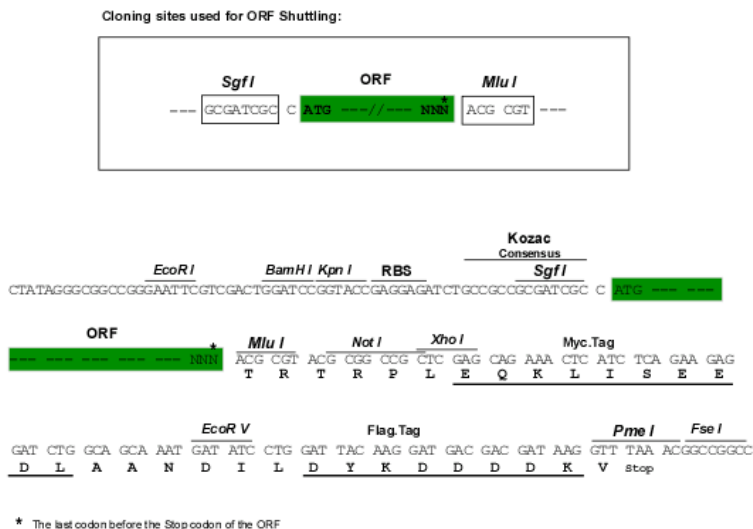
MGHSKQIRILLNEMEKLEKTLFRLEQGYELQFRLGPTLQGKAVTYTNYPPGETFNREKFRSLDWENP
 TEREDDSKYCKLNLQQSGSFQYYFLQGNKSGGGYIVVDPILRVGADNHVLPDVCVTLQTFQFLAKCLGPF
 DEWESRLRVAKESGYNMIHFTPLQTLGLSRSCYSLANQLELNPDFSRPNRKYTWNDVQGQVLEKKEWNV
 ICITDVVYNHTAANSKWIQEHPCEAYNLVNSPHLKPWVLDLDRALWRFSCDVAEGKYKEKGIPALIENDHH
 MNSIRKIIWEDIFPKLKLWEFFQVDVNKAVEQFRRLLTQENRRVTKSDPNQHLTI IQDPEYRRFGCTVDM
 NIALTTFIPHDKGPAAIIECCNWFHHRMEELNSEKHRLINYHQEQAVNCLLGNVFYERLAGHGPKLGPVT
 RKHPLVTRYFTFPFEEIDF SMEESMIHLPNKACFLMAHNGWVMGDDPLRNFAEPGSEVYLRRELICWGDS
 VKLRYGNKPEDCPYLWAHMKKYTEITATYFQGVRLDNCHSTPLHVAEYMLDAARNLQPNLYVVAELFTGS
 EDLDNVFVTRLGISSLIREAMSAYNSHEEGRLVYRYGGEPVGSFVQPCRLRPLMPAIAHALFMDITHDNEC
 PIVHRSAYDALPSTTIVSMACCSGSTRGYDELVPHQISVVSEERFYTKWNPEALPSNTGEVNFQSGIIA
 ARCAISKLHQELGAKGFIQVYVDQVDEDIVAVTRHSPSIHQSVVAVSRTAFRNPKTSFYKSEVPQMCIPG
 KIEEVVLEARTIERNTKPYRKDENSINGTPDITVEIREHIQLNESKIVKQAGVATKGPNEYIQEIEFENL
 SPGSVIIIFRVSLDPHAQVAVGILRNHLTQFSPHFKSGSLAVDNADPILKIPFASLASRLTLAELNQLILYR
 CESEEKEDGGGCYDIPNWSALKYAGLQGLMSVLAEIRPKNDLGHPFCNNLRSGDWMIDYVSNRLISRSGT
 IAEVKGWLQAMFFYLKQIPRYLIPCYFDAILIGAYTTLLDTAWKQMSFVQNGSTFVKHLSLGSVQLCGV
 GKFPSPILPALMDVPYRLNEITKEKEQCCVSLAAGLPHFSSGIFRCWGRDTFIALRGILLITGRYVEA
 RNIIILAFAGTLRHGLIPNLLGEGIYARYNCRDAVWWWLQCIQDYCKMVPNGLDILKCPVSRMPTDSDAP
 LPAGTLDQPLFEVIQEAMQKHMQGIQFRERNAGPQIDRNMKDEGFNITAGVDEETGFVYGGNRFNCGTWM
 DKMGESDRARNRGIPATPRDGSVEIVGLSKSAVRWLEL SSKNIFPYHEVTVKRHGKAIKVSYDEWNRK
 IQDNFEKLFHVSEDPDLNEKHPNLVHKRGIYKDSYGASSPWCDYQLRPNFTIAMVVAPELFTTEKAWKA
 LEIAEKLLGPLGMKTLDPDDMVYCGIYDNDNDNYNLAKGFNYHQGPELWPIGYFLRAKLYFSRLMG
 PETTAKTIVLVKNVLSRHYVHLERSPWKGLPEL TNENAQYCPFSCETAWSIATILETLIDL

TRTRPLEQKLISEEDLAANDILDYKDDDDKV

Chromatograms: https://cdn.origene.com/chromatograms/mg3098_g05.zip

Restriction Sites: SgfI-MluI

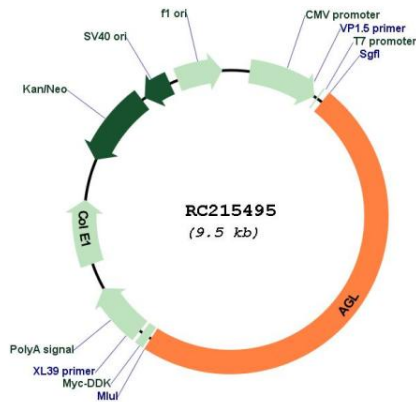
Cloning Scheme:



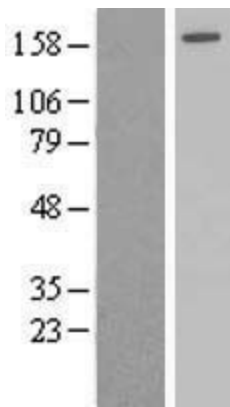
ACCN: NM_000028

ORF Size:	4596 bp
OTI Disclaimer:	The molecular sequence of this clone aligns with the gene accession number as a point of reference only. However, individual transcript sequences of the same gene can differ through naturally occurring variations (e.g. polymorphisms), each with its own valid existence. This clone is substantially in agreement with the reference, but a complete review of all prevailing variants is recommended prior to use. More info
OTI Annotation:	This clone was engineered to express the complete ORF with an expression tag. Expression varies depending on the nature of the gene.
Components:	The ORF clone is ion-exchange column purified and shipped in a 2D barcoded Matrix tube containing 10ug of transfection-ready, dried plasmid DNA (reconstitute with 100 ul of water).
Reconstitution Method:	<ol style="list-style-type: none">1. Centrifuge at 5,000xg for 5min.2. Carefully open the tube and add 100ul of sterile water to dissolve the DNA.3. Close the tube and incubate for 10 minutes at room temperature.4. Briefly vortex the tube and then do a quick spin (less than 5000xg) to concentrate the liquid at the bottom.5. Store the suspended plasmid at -20°C. The DNA is stable for at least one year from date of shipping when stored at -20°C.
RefSeq:	NM_000028.2
RefSeq Size:	7445 bp
RefSeq ORF:	4599 bp
Locus ID:	178
UniProt ID:	P35573
Cytogenetics:	1p21.2
Protein Families:	Druggable Genome
Protein Pathways:	Metabolic pathways, Starch and sucrose metabolism
MW:	174.6 kDa
Gene Summary:	This gene encodes the glycogen debrancher enzyme which is involved in glycogen degradation. This enzyme has two independent catalytic activities which occur at different sites on the protein: a 4-alpha-glucotransferase activity and a amylo-1,6-glucosidase activity. Mutations in this gene are associated with glycogen storage disease although a wide range of enzymatic and clinical variability occurs which may be due to tissue-specific alternative splicing. Alternatively spliced transcripts encoding different isoforms have been described. [provided by RefSeq, Jul 2008]

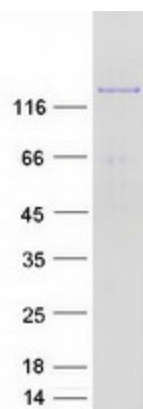
Product images:



Circular map for RC215495



Western blot validation of overexpression lysate (Cat# [LY424972]) using anti-DDK antibody (Cat# [TA50011-100]). Left: Cell lysates from untransfected HEK293T cells; Right: Cell lysates from HEK293T cells transfected with RC215495 using transfection reagent MegaTran 2.0 (Cat# [TT210002]).



Coomassie blue staining of purified AGL protein (Cat# [TP315495]). The protein was produced from HEK293T cells transfected with AGL cDNA clone (Cat# RC215495) using MegaTran 2.0 (Cat# [TT210002]).