

Product datasheet for **RC215492L4V**

TEF1 (TEAD1) (NM_021961) Human Tagged ORF Clone Lentiviral Particle

Product data:

Product Type:	Lentiviral Particles
Product Name:	TEF1 (TEAD1) (NM_021961) Human Tagged ORF Clone Lentiviral Particle
Symbol:	TEF1
Synonyms:	AA; NTEF-1; REF1; TCF-13; TCF13; TEAD-1; TEF-1
Mammalian Cell Selection:	Puromycin
Vector:	pLenti-C-mGFP-P2A-Puro (PS100093)
Tag:	mGFP
ACCN:	NM_021961
ORF Size:	1278 bp
ORF Nucleotide Sequence:	The ORF insert of this clone is exactly the same as(RC215492).
OTI Disclaimer:	The molecular sequence of this clone aligns with the gene accession number as a point of reference only. However, individual transcript sequences of the same gene can differ through naturally occurring variations (e.g. polymorphisms), each with its own valid existence. This clone is substantially in agreement with the reference, but a complete review of all prevailing variants is recommended prior to use. More info
OTI Annotation:	This clone was engineered to express the complete ORF with an expression tag. Expression varies depending on the nature of the gene.
RefSeq:	NM_021961.5
RefSeq Size:	9433 bp
RefSeq ORF:	1281 bp
Locus ID:	7003
UniProt ID:	P28347
Cytogenetics:	11p15.3
Domains:	TEA
Protein Families:	Transcription Factors

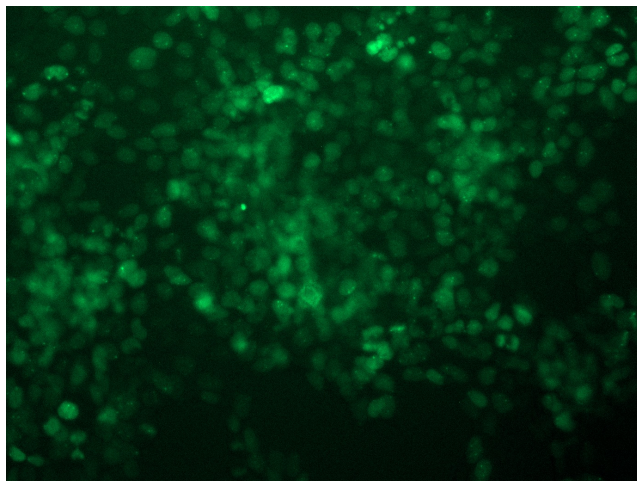


[View online »](#)

MW: 47.9 kDa

Gene Summary: This gene encodes a ubiquitous transcriptional enhancer factor that is a member of the TEA/ATTS domain family. This protein directs the transactivation of a wide variety of genes and, in placental cells, also acts as a transcriptional repressor. Mutations in this gene cause Sveinsson's chorioretinal atrophy. Additional transcript variants have been described but their full-length natures have not been experimentally verified. [provided by RefSeq, May 2010]

Product images:



[RC215492L4] was used to prepare Lentiviral particles using [TR30037] packaging kit. HEK293T cells were transduced with RC215492L4V particle to overexpress human TEAD1-mGFP fusion protein.