

## Product datasheet for **RC215491**

### IL26 (NM\_018402) Human Tagged ORF Clone

#### Product data:

Product Type:	Expression Plasmids
Product Name:	IL26 (NM_018402) Human Tagged ORF Clone
Tag:	Myc-DDK
Symbol:	IL26
Synonyms:	AK155; IL-26
Mammalian Cell Selection:	Neomycin
Vector:	pCMV6-Entry (PS100001)
E. coli Selection:	Kanamycin (25 ug/mL)
ORF Nucleotide Sequence:	>RC215491 ORF sequence Red=Cloning site Blue=ORF Green=Tags(s)

TTTTGTAATACGACTCACTATAGGGCGGCCGGAATTCGTCGACTGGATCCGGTACCGAGGAGATCTGCC  
GCC**CGATCGCC**

ATGCTGGTGAATTCATTTGAGGTGTGGGTGCTGTTAGTCACTCTGTCTCTTGCCATTGCCAAGCACA  
AGCAATCTTCCTTACCAAAAAGTTGTTACCCAAGGGGAACATTGTCCAAGCTGTTGACGCTCTCTATAT  
CAAAGCAGCATGGCTCAAAGCAACGATTCCAGAAGACCGCATAAAAAATATACGATTATTAAGAAAGAAA  
ACAAAAAAGCAGTTTATGAAAACTGTCAATTTCAAGAACAGCTTCTGTCCTTCTCATGGAAGACGTTT  
TTGGTCAACTGCAATTGCAAGGCTGCAAGAAAATACGCTTTGTGGAGGACTTTCATAGCCTTAGGCAGAA  
ATTGAGCCACTGTATTTCTGTGCTTCATCAGCTAGAGAGATGAAATCCATTACCAGGATGAAAAGAATA  
TTTTATAGGATTGAAAACAAAGGAATCTACAAAGCCATCAGTGAAGTGGATATTCTTCTTCTGATTAA  
AAAAATTATTGAAAGCAGTCAG

**ACGCGT**ACGCGGCCGCTCGAGCAGAACTCATCTCAGAAGAGGATCTGGCAGCAAATGATATCCTGGATT  
ACAAGGATGACGACGATAAGGTTTAA

Protein Sequence:	>RC215491 protein sequence Red=Cloning site Green=Tags(s)
-------------------	--

MLVNFILRCGLLLVTLSLAIAKHKQSSFTKSCYPRGTLQAVDALYIKAAWLKATIPEDRIKNIRLLKKK  
TKKQFMKNCQFQEQLLSFFMEDVFGQLQLQGCKKIRFVEDFHSLRQKLSHCISCASSAREMKSITRMKRI  
FYRIGNKGIYKAISELDILLSWIKKLESSQ

**TR**TRPLEQKLISEEDLAANDILDYKDDDDKV

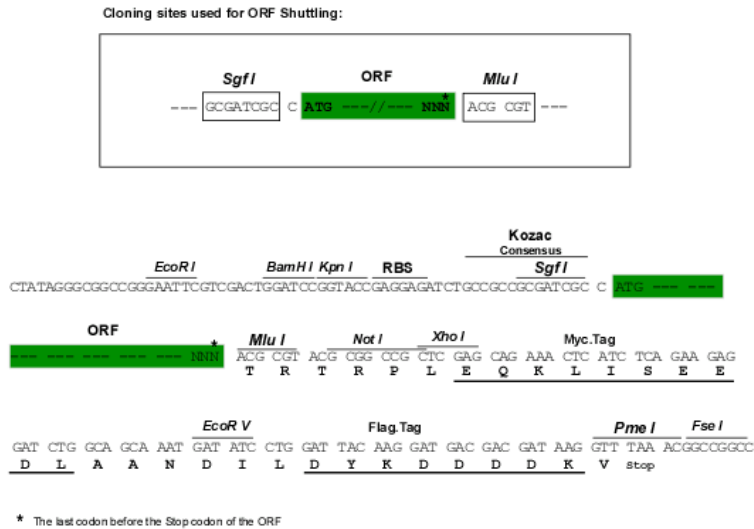
Chromatograms:	<a href="https://cdn.origene.com/chromatograms/mk6455_a05.zip">https://cdn.origene.com/chromatograms/mk6455_a05.zip</a>
----------------	---



[View online »](#)

Restriction Sites: SgfI-MluI

Cloning Scheme:



ACCN: NM\_018402

ORF Size: 513 bp

OTI Disclaimer: The molecular sequence of this clone aligns with the gene accession number as a point of reference only. However, individual transcript sequences of the same gene can differ through naturally occurring variations (e.g. polymorphisms), each with its own valid existence. This clone is substantially in agreement with the reference, but a complete review of all prevailing variants is recommended prior to use. [More info](#)

OTI Annotation: This clone was engineered to express the complete ORF with an expression tag. Expression varies depending on the nature of the gene.

Components: The ORF clone is ion-exchange column purified and shipped in a 2D barcoded Matrix tube containing 10ug of transfection-ready, dried plasmid DNA (reconstitute with 100 ul of water).

Reconstitution Method:

1. Centrifuge at 5,000xg for 5min.
2. Carefully open the tube and add 100ul of sterile water to dissolve the DNA.
3. Close the tube and incubate for 10 minutes at room temperature.
4. Briefly vortex the tube and then do a quick spin (less than 5000xg) to concentrate the liquid at the bottom.
5. Store the suspended plasmid at -20°C. The DNA is stable for at least one year from date of shipping when stored at -20°C.

RefSeq: [NM\\_018402.2](#)

RefSeq Size: 1047 bp

RefSeq ORF: 516 bp

Locus ID: 55801

UniProt ID: [Q9NPH9](#)

**Cytogenetics:** 12q15

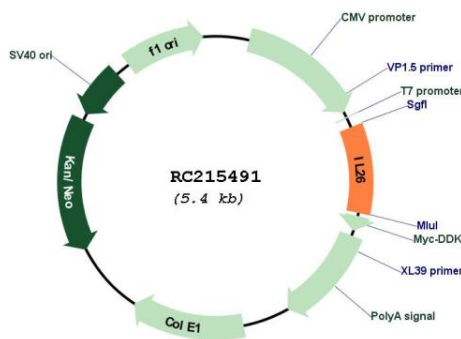
**Protein Families:** Druggable Genome, Secreted Protein

**Protein Pathways:** Cytokine-cytokine receptor interaction, Jak-STAT signaling pathway

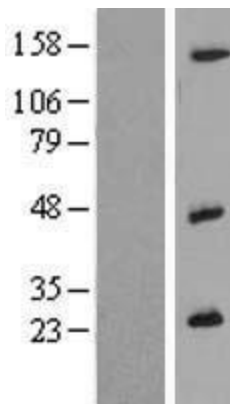
**MW:** 19.8 kDa

**Gene Summary:** This gene was identified by its overexpression specifically in herpesvirus samimiri-transformed T cells. The encoded protein is a member of the IL10 family of cytokines. It is a secreted protein and may function as a homodimer. This protein is thought to contribute to the transformed phenotype of T cells after infection by herpesvirus samimiri. [provided by RefSeq, Jul 2008]

**Product images:**



Circular map for RC215491



Western blot validation of overexpression lysate (Cat# [LY413074]) using anti-DDK antibody (Cat# [TA50011-100]). Left: Cell lysates from untransfected HEK293T cells; Right: Cell lysates from HEK293T cells transfected with RC215491 using transfection reagent MegaTran 2.0 (Cat# [TT210002]).