

Product datasheet for **RC215488L4V**

mtTFA (TFAM) (NM_003201) Human Tagged ORF Clone Lentiviral Particle

Product data:

Product Type:	Lentiviral Particles
Product Name:	mtTFA (TFAM) (NM_003201) Human Tagged ORF Clone Lentiviral Particle
Symbol:	mtTFA
Synonyms:	MTDPS15; MTTF1; MTTFA; TCF6; TCF6L1; TCF6L2; TCF6L3
Mammalian Cell Selection:	Puromycin
Vector:	pLenti-C-mGFP-P2A-Puro (PS100093)
Tag:	mGFP
ACCN:	NM_003201
ORF Size:	738 bp
ORF Nucleotide Sequence:	The ORF insert of this clone is exactly the same as(RC215488).
OTI Disclaimer:	The molecular sequence of this clone aligns with the gene accession number as a point of reference only. However, individual transcript sequences of the same gene can differ through naturally occurring variations (e.g. polymorphisms), each with its own valid existence. This clone is substantially in agreement with the reference, but a complete review of all prevailing variants is recommended prior to use. More info
OTI Annotation:	This clone was engineered to express the complete ORF with an expression tag. Expression varies depending on the nature of the gene.
RefSeq:	NM_003201.1
RefSeq Size:	1936 bp
RefSeq ORF:	741 bp
Locus ID:	7019
UniProt ID:	Q00059
Cytogenetics:	10q21.1
Domains:	HMG
Protein Families:	Druggable Genome, Transcription Factors



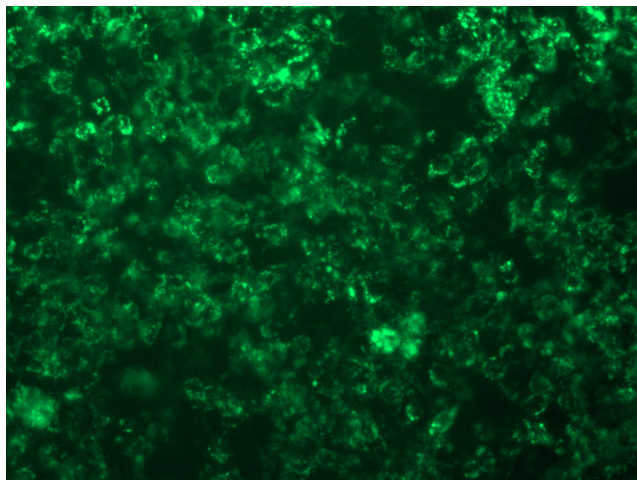
[View online »](#)

Protein Pathways: Huntington's disease

MW: 29.1 kDa

Gene Summary: This gene encodes a key mitochondrial transcription factor containing two high mobility group motifs. The encoded protein also functions in mitochondrial DNA replication and repair. Sequence polymorphisms in this gene are associated with Alzheimer's and Parkinson's diseases. There are pseudogenes for this gene on chromosomes 6, 7, and 11. Alternative splicing results in multiple transcript variants. [provided by RefSeq, Aug 2012]

Product images:



[RC215488L4] was used to prepare Lentiviral particles using [TR30037] packaging kit. HEK293T cells were transduced with RC215488L4V particle to overexpress human TFAM-mGFP fusion protein.