

Product datasheet for RC215486

LAMB4 (NM_007356) Human Tagged ORF Clone

Product data:

Product Type:	Expression Plasmids
Product Name:	LAMB4 (NM_007356) Human Tagged ORF Clone
Tag:	Myc-DDK
Symbol:	LAMB4
Mammalian Cell Selection:	Neomycin
Vector:	pCMV6-Entry (PS100001)
E. coli Selection:	Kanamycin (25 ug/mL)
ORF Nucleotide Sequence:	>RC215486 representing NM_007356 Red=Cloning site Blue=ORF Green=Tags(s)

TTTTGTAATACGACTCACTATAGGGCGGCCGGGAATTCGTCGACTGGATCCGGTACCGAGGAGATCTGCC
GCCCGATCGCC

ATGCAATTTCAACTGACCCTTTTTTGCACCTGGGTGGCTCAGTTACTCAAAGCTCAAGATGACTGCA
ACAGGGGTGCCTGTCATCCCACCACTGGTGATCTCCTGGTGGGCAGGAACACGCAGCTTATGGCTTCTTC
TACCTGTGGGCTGAGCAGAGCCCAGAAATACTGCATCCTCAGTTACCTGGAGGGGAACAAAAATGCTCC
ATCTGTGACTCTAGATTTCCATATGATCCGTATGACCAACCCAACAGCCACACCATTGAGAATGTCAGT
TAAGTTTTGAACACAGACAGAGAAAAGAAATGGTGGCAATCTGAAAATGGTCTTGATCATGTCAGCATCAG
ACTGGACTTAGAGGCATTATTTTCGGTTCAGCCACCTTATCCTGACCTTTAAGACTTTTCGGCCTGCTGCA
ATGTTAGTTGAACGTTCCACAGACTATGGACACAACCTGGAAGTGTTCAAATATTTTGCAAAGACTGTG
CCACTTCTTTCCTAACATCACATCTGGCCAGGCCAGGGAGTGGGAGACATTGTTTGTGACTCCAAATA
CTCGGATATTGAACCTCAACAGGTGGAGAGGTTGTTTTAAAAGTTTTGGATCCCAGTTTTGAAATTGAA
AACCTTATAGCCCTACATCCAAGACCTGTGACATTGACAAACCTGAGGATAAACTTTACCAAGCTCC
ACACCCTTGGGGATGCTTTGCTTGAAGGAGGCCAAAATGATTCCCTTGATAAATACTACTATGCTCTGTA
CGAGATGATTGTTTCGGGGAAGCTGCTTTTGAATGGCCATGCTAGCGAATGTCGCCCTATGCAGAAGATG
CGGGGAGATGTTTTAGCCCTCCTGGAATGGTTCACGGTCAGTGTGTGTGCAGACAATACAGATGGTC
CGAACTGTGAGAGATGCAAGGACTTCTTCCAGGATGCTCCTTGGAGGCCAGCTGCAGACCTCCAGGACAA
CGCTTGCAGATCGTGCAGCTGTAATAGCCACTCCAGCCGCTGTCACCTTTGACATGACTACGTACCTGGCA
AGCGGTGGCCTCAGCGGGGGCGTGTGTGAAGACTGCCAGCACAACACTGAGGGGCAGCACTGCGACCCGCT
GCAGACCCCTCTTCTACAGGGACCCGCTCAAGACCATCTCAGATCCCTACGCGTGCATTCCCTGTGAATG
TGACCCCGATGGGACCATATCTGGTGGCATTGTGTGAGCCACTGATCCTGCCTTAGGGTCTGTGGCC
GGCCAGTGCCCTTTGTAAGAGAACGTGGAAGGAGCCAAATGCGACCAGTGCAAACCAACCACTACGGAC
TAAGCGCCACCGACCCCTGGGCTGCCAGCCCTGCGACTGTAACCCCTTGGGAGTCTGCCATTCTTGAC
CTGTGATGTGGATACAGCCAATGCTTGTGCCTGTCATATGTCACCGGAGCACACTGCCAAGAATGCACT
GTTGGATACTGGGCGCTGGGAAATCATCTCCATGGGTGTTCTCCCTGTGACTGTGATATTGGAGGTGCTT
ATTCTAACGTGTGCTCACCCAAGAATGGCAGTGTGAATGCCGCCACATGTCAGTGGCCGTAGCTGCTC



[View online >](#)

TGAACCAGCCCCTGGCTACTTCTTTGCTCCTTTGAATTTCTATCTCTACGAGGCAGAGGAAGCCACAACA
 CTCCAAGGACTGGCGCCTTTGGGCTCGGAGACGTTTGGCCAGAGTCTGTGTTTACGTTGTTTTAGGAG
 AGCCAGTTCCTGGGAACCCTGTTACATGGACTGGACCTGGATTTGCCAGGGTTCTCCCTGGGGCTGGCTT
 GAGATTTGCTGTCAACAACATCCCTTTCTGTGGACTTACCATTGCCATTCACTATGAAACCCAGTCT
 GCAGCTGACTGGACTGTCCAGATTGTGGTGAACCCCTGGAGGGAGTGAAGTGCATACCCAAGACTC
 TACAGTCAAAGCCTCAGTCTTTTGCCTTACCAGCGGCTACGAGAATCATGCTGCTCCCACACCATCTG
 TTTAGAACCAGATGTACAATATCCATAGATGTCTATTTTTCTCAGCCTTTGCAAGGAGAGTCCCACGCT
 CATTACATGTCCTGGTGGACTCTTGGCCTTATCCCAAATCAATTCATTGGAGAATTTCTGCAGCA
 AGCAGGACTTAGATGAGTATCAGCTTCACAACTGTGTTGAAATTGCCTCAGCAATGGGACCTCAAGTGT
 CCCGGGTGCCTGTGAAAGGCTGATCATCAGCATGTCTGCCAAGCTGCATGATGGGGCTGTGGCCTGCAAG
 TGTCAACCCAGGGCTCAGTCGGATCCAGCTGCAGCCGACTTGGAGGCCAGTGCCAGTGTAAACCTCTTG
 TGGTCGGGCGCTGCTGTGACAGGTGCTCAACTGGAAGCTATGATTTGGGCATCACGGCTGTCAACCATG
 TCACTGCCATCCTCAAGGATCAAAGGACTGTATGTGACCAAGTAACAGGACAGTGCCCTGCCATGGA
 GAGGTGTCTGGCCGCGCTGTGATCGCTGCCTGGCAGGCTACTTTGGATTTCCAGCTGCCACCTTGCC
 CTTGTAATAGGTTTGTGAACTTTGTGATCCTGAGACAGGTCATGCTTCAATTGTGGAGGCTTTACAAC
 TGGCAGAAACTGTGAAAGGTGATTGATGGTACTATGGAATCCTTCTCAGGACAGCCCTGTCGTCTCT
 TGCTGTGTCCAGATGATCCCTCAAGCAATCAGTATTTTGCCATTCTGTTATCAGAATCTGTGGAGCT
 CAGATGTAATCTGCAATTGTCTTCAAGGTTATACGGTACTCAGTGTGGAGAATGCTCTACTGGTTTCTA
 TGGAAATCCAAGAATTTCAAGGACCTTGCCAACCATGTGCCTGCAACAACAACATAGATGTAACCGAT
 CCAGAGTCTGCAGCCGGGTAAACAGGGGAGTGCCTTCGATGTTTGCAACAACACTCAGGGCGCAAACCTGCC
 AGCTCTGCAAACAGGTCATAATGATCAGCCCTCAATCAGACCTGCAGAAGATGCTCCTGCCATGCTTC
 CGGCTGTGAGTCCCATGGAGTGTCCCTTGGTGGGGAGCTTGCCTCTGTGACCTGTCACTGGTGCATGT
 CCTTGTCTGCCGAATGTACAGGCTGGCCTGTGACCTGTGCTGATGGATACTGGAATCTGGTCCCTG
 GCAGAGGATGTCAGTCACTGTGACTGTGACCTTAGGACCTCTCAAAGTAGCCACTGTGACCACTTCAAGG
 CCAGTGTCCGTGTAATAGGTTACGGCGGAAACGTTGCAAGTGTGCAAGGAAATATTATGGTGTAT
 CCACCTGGGCGATGCATTCCATGTGATTGTAACAGGGCAGGTACCCAGAAGCCCTCTGTGATCCAGACA
 CAGGCATGTGCCGCTGCCGGGAGGGTGTGAGCGGCCAGAGATGTGATCGCTGTGCCCGGGGACACAGCCA
 GGAATCCCTACTTGTCTTCAATGTCACTTGTGCTTTGATCAGTGGGACCACACCATTTCTTCCCTCTCC
 AAAGCGGTGCAAGGGTAAATGAGACTGGCTGCTAACATGGAAGATAAAAGAGAGACCCTGCCTGTCTGTG
 AGGCAGACTTCAAAGACCTCAGAGGGAACGTGTCTGAAATAGAAAGGATTTTGAACATCCTGTTTTCCC
 ATCTGGGAAATCTTAAAAGTCAAGGATTATCATGACTCTGTTAGAAGACAAATCATGCAGCTAAATGAA
 CAACTGAAAGCAGTGTATGAATTTCAAGATCTGAAAGATACAATAGAAAGAGCAAAGAATGAAGCAGACC
 TCTTACTTGAAGACCTTCAAGGAAGAAATGATTTGCAATCCAGTGTCTTAAATGCAAGCATTGCGGACTC
 CTCAGAAAACATCAAGAAATATTATCACATATCATCTGCTGAAAAGAAAATTAATGAAACTAGTTCC
 ACCATTAATACCTCTGCAAAATCAAGGAATGACTTACTTACCATCTTAGATACACTAACCTCAAAAGGAA
 ACTTGTCAATGGAAGATTAAGCAGATTAAGATACCAGATATCCAAATATTGAATGAAAAGGTGTGCGG
 AGATCCAGGAAATGTGCCATGTGTGCCCTTGCCCTGTGGCGGTGCTCTCTGCACGGGCGGAAGGGGCAC
 AGGAAGTGTAGGGGTCCCGCTGTACGGCTCCCTGACCCTCTCAACGAATGCCCTCAAAAAGCCAGG
 AAGCAAAATCCATTATTCTGTAATTTGGACAAACAGGTTCTGTTGGTTGAAAAATCAGATCGAAAGTAAAG
 TGAACAGGCAGAAGTCTCCAAAAACAATGCCTTACAGCTGAGGGAAAAACTGGGAAATATAAGAAACCAA
 AGTGACTCTGAAGAAGAAAACATCAATCTTTTATCAAAAAAGTAAAAACTTTTTGTTAGAGGAAAACG
 TGCTCCAGAAGACATCGAGAAGTTGCGAATGGTGTGCTTGACATTACCTACCAATCCATCCAAAAA
 TCTAACCGATGAACTTGTCAAAATACAGAAACATATGCAACTCTGTGAGGATTACAGGACAGATGAAAAC
 AGGTTAAATGAAGAAGCAGATGGAGCCAAAAGCTTTTGGTGAAGGCCAAAGCAGCTGAGAAAGCAGCAA
 ATATTCTATTAATCTTGACAAAACATTGAACCAGTTACAACAAGCTCAAATCACTCAAGGACGGGCAAA
 CTCTACCATTACACAGCTGACTGCAATATAACAAAAATAAAAAGAATGTGCTGCAGGCTGAAAATCAA
 ACCAGGAAATGAAGAGTGTGAGTGTGAGTGTAGCAAAAGCAGGATCAGGGCTGGAGGATGGACTTTCCCTGC
 TGACAGCAAGTTGCAAAGGCATCAAGACCAGCTGTCAATGCGAAAGTTCAAGGCTGAATCTGCCCAACA
 CCAGGCTGGGAGTCTTGAGAAGGAATTTGTTGAGCTGAAAAACAATATGCTATTCTCAACGTAAGACA
 AGCACTACAGGACTAACAAAGGAGACATTAGGAAAAGTTAAACAGCTAAAAGATGCGGCAGAAAAATTTGG
 CTGGAGATACAGAGGCCAAGATAAGAAGAATAACAGATTTAGAAAAGGAAAAATCCAAGATTTGAATCTAAG
 TAGACAAGCAAAAGCTGATCAACTGAGAATATTGGAAGATCAAGTTGTTGCCATTAATAATGAAATGTT

GAACAAGAAAAAATATGCTAGGTGCTATAGC

AGCGGACCGACGCGTACGCGGCCGCTCGAGCAGAAAATCATCTCAGAAGAGGATCTGGCAGCAAATGATATCC
TGGATTACAAGGATGACGACGATAAGGTTAA

Protein Sequence:

>RC215486 representing NM_007356
Red=Cloning site Green=Tags(s)

MQFQLTLFLHLGWL SYSKAQDDCNRGACHPTTGDLLVGRNTQLMASSTCGLSRAQKYCILSYLEGEQKCS
ICDSRFPYDPYDQPNSHTIENVTVSFEPDREKKWWQSENGLDHVSIRLDLEALFRFSHLILTFKTRPAA
MLVERSTDYGHNWKVFKYFAKDCATSFNPITSGQAQGVGDIVCDISKYSDIEPSTGGEVVLKVLDPSEFIE
NPYSPYIQDLVTLNLRINFTKLHTLGDALLGRRQNDSLDKYYALYEMI VRGSCFCNGHASECRPMQKM
RGDVFSPPGMVHGQCVCQHNTDGPNCERCKDFFQDAPWRPAADLQDNACRSCSCNSHSSRCHFDMTTYLA
SGGLSGGVCEDCQHNTGQHCDRCRPLFYRDPLKTI SDPYACIPCECDPDGTISGGICVSHSDPALGVA
GQCLCKENVEGAKCDQCKPNHYGLSATDPLGCQPCDCNPLGSLPFLTCDVDTGQCLCLSYVTGAHCEECT
VGYWGLGNHLHGCSPCDCDIGGAYSNVCSKNGQCECRPHVTGRSCSEPAPGYFFAPLNFYLYEAEAEATT
LQGLAPLGSETFGQSPAVHVVLGEPVPGNPVTTWTGPGFARVLPAGLRFVANNIPFPVDFIAIHETQS
AADWTQIVVNPFGGSEHCIPKTLQSKPQSFALPAATRIMLLPTPICLEPDVQYSIDVYFSQPLQGESHA
HSHVLVDSLGLIPQINSLENFCSKQDLDEYQLHNCVEIASAMGPQVLPGACERLIISMSAKLHDGAVACK
CHPQGSVGS SCSRLGGQCQCKPLVVGRCDCRSTGSYDLGHHGCHPCHPQGSKDTVCDQVTGQCPCHG
EVSGRRCDRCLAGYFGFSPCHPCPCNRF AELCDPETGSCFNCGGFTTGRNCERCIDGYYGNPSSGQPCRP
CLCPDDPSSNQYFAHSCYQNLWSSDVICNCLQGYTGTQCCECSTGFYGNPRI SGAPCQPCACNNIDVTD
PESCSRVTGECLRCLHNTQGANCQLCKPGHYGSALNQT CRRCSCHASGVSPMECPPGGGACLCDPVTGAC
PCLPNVTGLACDRCADGYWNLVPGRGCSQSCDCDPRTSQSSHCDQLTGQCPCKLGYGGKRCSECQENYYGD
PPGRCIPDCNRAGTQKPICDPDTGMCRCREGVSQRCDCRARGHSQEFPTCLQCHLCFDQWDHTISSLS
KAVQGLMRLAANMEDKRETLPVCEADFKDLRGNVSEIERILKHPVFP SGKFLKVKDYHDSVRRQIMQLNE
QLKAVYEFQDLKDTIERAKNEADLLLEDLQEEIDLQSSVLNASIADSENICKKYYHISSSAEKKINETSS
TINTSANTRNDLLTILDLT SKGNLSLERLKQIKIPDIQILNEKVC GDPGNVPCVPLPCGGALCTGRKGH
RKCRPGPGCHGSLTLSTNALQKAQEA KSIIRNLDKQVRLKNQIESISEQAEVSKNNALQLREKLGNI RNQ
SDSEENINLFIKKVKNFLL EENVPPEDIEKVANGVLDIHLPIPSQNL TDELVKIQKHMQLCEDYRTDEN
RLNEEADGAQKLLVKAKAAEKAANILLNLDKTLNQLQQAQITQGRANSTITQLTANITKIKKNVLQAE NQ
TREMKSELELAKQRSGLEDGLSLLQTKLQRHQDHAVNAKVQAES AQHQAGSLEKEFVELKKQYAILQRKT
STTGLTKETLGKVKQLKDAAEKLAGDTEAKIRRIDLERKIQDLNLSRQAKADQLRILEDQVVAIKNEIV
EQEKKYARCYS

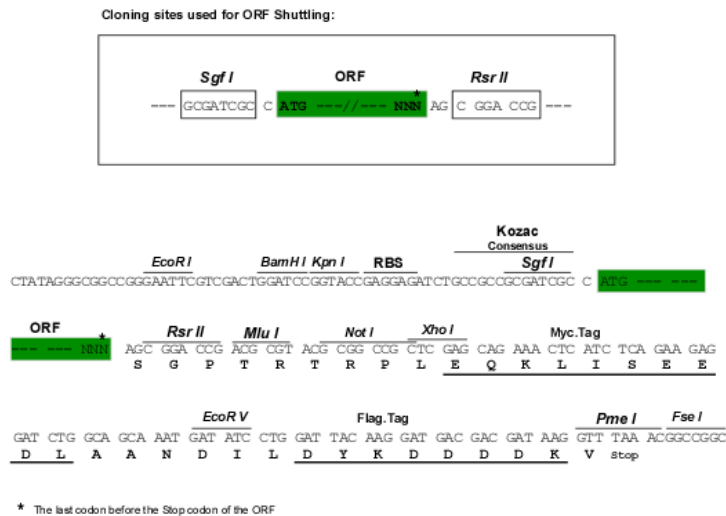
SGPTRRRLEQKLI SEEDLAANDILDYKDDDDK V

Chromatograms:

https://cdn.origene.com/chromatograms/mk8027_b10.zip

Restriction Sites:

Sgfl-RsrII

Cloning Scheme:


ACCN: NM_007356

ORF Size: 5283 bp

OTI Disclaimer: The molecular sequence of this clone aligns with the gene accession number as a point of reference only. However, individual transcript sequences of the same gene can differ through naturally occurring variations (e.g. polymorphisms), each with its own valid existence. This clone is substantially in agreement with the reference, but a complete review of all prevailing variants is recommended prior to use. [More info](#)

OTI Annotation: This clone was engineered to express the complete ORF with an expression tag. Expression varies depending on the nature of the gene.

Components: The ORF clone is ion-exchange column purified and shipped in a 2D barcoded Matrix tube containing 10ug of transfection-ready, dried plasmid DNA (reconstitute with 100 ul of water).

Reconstitution Method:

1. Centrifuge at 5,000xg for 5min.
2. Carefully open the tube and add 100ul of sterile water to dissolve the DNA.
3. Close the tube and incubate for 10 minutes at room temperature.
4. Briefly vortex the tube and then do a quick spin (less than 5000xg) to concentrate the liquid at the bottom.
5. Store the suspended plasmid at -20°C. The DNA is stable for at least one year from date of shipping when stored at -20°C.

RefSeq: [NM_007356.1](#), [NP_031382.1](#)

RefSeq Size: 5874 bp

RefSeq ORF: 5286 bp

Locus ID: 22798

UniProt ID: [A4D0S4](#)

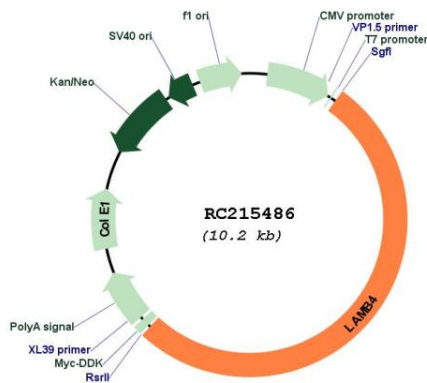
Cytogenetics: 7q31.1

Protein Pathways: ECM-receptor interaction, Focal adhesion, Pathways in cancer, Small cell lung cancer

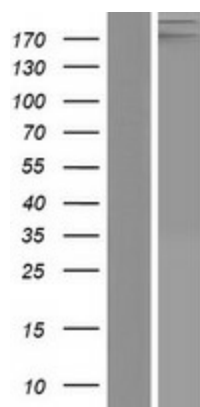
MW: 193.4 kDa

Gene Summary: Binding to cells via a high affinity receptor, laminin is thought to mediate the attachment, migration and organization of cells into tissues during embryonic development by interacting with other extracellular matrix components.[UniProtKB/Swiss-Prot Function]

Product images:



Circular map for RC215486



Western blot validation of overexpression lysate (Cat# [LY415985]) using anti-DDK antibody (Cat# [TA50011-100]). Left: Cell lysates from untransfected HEK293T cells; Right: Cell lysates from HEK293T cells transfected with RC215486 using transfection reagent MegaTran 2.0 (Cat# [TT210002]).