

Product datasheet for **RC215476**

CYP11B2 (NM_000498) Human Tagged ORF Clone

Product data:

Product Type:	Expression Plasmids
Product Name:	CYP11B2 (NM_000498) Human Tagged ORF Clone
Tag:	Myc-DDK
Symbol:	CYP11B2 (CYP11B2)
Synonyms:	ALDOS; CPN2; CYP11B; CYP11BL; CYPXIB2; P-450C18; P450aldo; P450C18
Mammalian Cell Selection:	Neomycin
Vector:	pCMV6-Entry (PS100001)
E. coli Selection:	Kanamycin (25 ug/mL)



[View online »](#)

ORF Nucleotide Sequence:

>RC215476 representing NM_000498
 Red=Cloning site Blue=ORF Green=Tags(s)

TTTTGTAATACGACTCACTATAGGGCGGCCGGAATTCGTCGACTGGATCCGGTACCGAGGAGATCTGCC
 GCC**CGGATCGCC**

ATGGCACTCAGGGCAAAGGCAGAGGTGTGCGTGGCAGCGCCCTGGCTGTCCCTGCAAAGGGCAGGGGCAC
 TGGCACTAGAGCCGCTCGGGCCCTAGGACGGTGTGCGGTTTGAAGCCATGCCCCAGCATCCAGGCAA
 CAGGTGGCTGAGGCTGCTGCAGATCTGGAGGGAGCAGGGTTATGAGCACCTGCACCTGGAGATGCACCA
 ACCTTCCAGGAGCTGGGGCCATTTTCAGGTACAACCTGGGAGGACCACGCATGGTGTGTGTGATGCTGC
 CGGAGGATGTGGAGAAGCTGCAACAGGTGGACAGCCTGCATCCCTGCAGGATGATCTGGAGCCCTGGGT
 GGCCTACAGACAACATCGTGGGCACAAATGTGGCGTGTCTTGTGAATGGGCCTGAATGGCGCTTCAAC
 CGATTGCGGCTGAACCCAGATGTGCTGTCGCCAAGGCCGTGCAGAGTTCCTCCCGATGGTGGATGCAG
 TGGCCAGGGACTTCTCCAGGCCCTGAAGAAGAAGGTGCTGCAGAACGCCGGGGGAGCCTGACCCTGGA
 CGTCCAGCCAGCATCTCCACTACACCATAGAAGCCAGCAACTTAGCTCTTTTTGGAGAGCGGCTGGGC
 CTGGTTGGCCACAGCCCCAGTTCGCCAGCCTGAACTTCCTCCATGCCCTGGAGGTCATGTTCAAATCCA
 CCGTCCAGCTCATGTTTATGCCAGGAGCCTGTCTCGCTGGATCAGCCCCAAGGTGTGGAAGGAGCACTT
 TGAGGCCTGGGACTGCATCTTCCAGTACGGTGACAACGTATCCAGAAAACTACCAGGAACTGGCCTTC
 AACCGCCCTCAACTACACAGGCATCGTGGCGGAGCTCCTGTTGAAGCGGAACTGCTACTAGAAGCCA
 TCAAGGCCAACTATGGAACCTACTGCAGGGAGCGTGGACACGACAGCGTTTCCCTTGCTGATGACGCT
 CTTTGAGCTGGCTCGGAACCCGACGTGCAGCAGATCCTGCGCCAGGAGACCTGGCCGCCGAGCCAGC
 ATCAGTGAACATCCCCAGAAGGCAACCACCGAGCTGCCCTGCTGCGGGCGGCCCTCAAGGAGACCTTGC
 GGCTCTACCCTGTGGGTCTGTTTTGGAGCGAGTGGTGGCTCAGACTTGGTGTCTCAGAATAACACAT
 CCCAGCTGGGACATTGGTACAGTTTTCTCTACTCGCTGGGTGCAATGCCGCTTGTTCGCCAGGCGCT
 GAGCGGTATAATCCCCAGCGCTGGCTAGACATCAGGGGCTCCGGCAGGAACTCCACCACGTGCCCTTGT
 GCTTTGGCATGCGCCAGTGCCTCGGGCGGCGCTGGCAGAGGCAGAGATGCTGCTGCTGCTGCACCACGT
 GCTGAAGCACTTCTGGTGGAGACATAACTCAAGAGGACATAAAGATGGTCTACAGCTTCATATTGAGG
 CCTGGCACGTCCCCCTCTCACTTTCAGAGCGATTAAC

ACGCGTACGCGGCCGCTCGAGCAGAACTCATCTCAGAAGAGGATCTGGCAGCAAATGATATCTGGATT
 ACAAGGATGACGACGATAAGGTTTAA

Protein Sequence:

>RC215476 representing NM_000498
 Red=Cloning site Green=Tags(s)

MALRAKAEVCVAAPWLSLQRRALGTRAARAPRTVLPFEAMPQHPGNRWLRLLQIWREQGYEHLHLEMHQ
 TFQELGPIFRYNLGGPRMVCMLPEDVEKLQQVDSLHPCRMILEPWVAYRQHRGHKCGVFLNNGPEWRFN
 RLRLNPDVLSPKAVQRFLLPMVDAVARDFSQALKKKVLQNARGSLTLDVQPSIFHYTIEASNLALFGERLG
 LVGHSPSSASLNFLEVMFKSTVQLMFMPSLSRWISPKVWKEHFEAWDCIFQYDNCIQKIYQELAF
 NRPQHYTGIVAELLLKAELEIAIKANSMELTAGSVDTTAFPLMLTFLARNPVQVQILRQESLAAAAAS
 ISEHPQKATTEPLLLRAALKETLRLYPVGLFLERVVSSDLVQLQNYHIPAGTLVQVFLYSLGRNAALFPRP
 ERYNPQRWLDIRGSGRNFHVPFVGFGRQCLGRRLAEAEMLLLLHHVVKHFLVETLTQEDIKMVYSFILR
 PGTSPLLTFRAIN

TRTRPLEQKLISEEDLAANDILDYKDDDDKV

Chromatograms:

https://cdn.origene.com/chromatograms/mg2628_f01.zip

Restriction Sites:

SgfI-MluI

Cloning Scheme:

ACCN: NM_000498

ORF Size: 1509 bp

OTI Disclaimer: Due to the inherent nature of this plasmid, standard methods to replicate additional amounts of DNA in E. coli are highly likely to result in mutations and/or rearrangements. Therefore, OriGene does not guarantee the capability to replicate this plasmid DNA. Additional amounts of DNA can be purchased from OriGene with batch-specific, full-sequence verification at a reduced cost. Please contact our customer care team at custsupport@origene.com or by calling 301.340.3188 option 3 for pricing and delivery.

The molecular sequence of this clone aligns with the gene accession number as a point of reference only. However, individual transcript sequences of the same gene can differ through naturally occurring variations (e.g. polymorphisms), each with its own valid existence. This clone is substantially in agreement with the reference, but a complete review of all prevailing variants is recommended prior to use. [More info](#)

OTI Annotation: This clone was engineered to express the complete ORF with an expression tag. Expression varies depending on the nature of the gene.

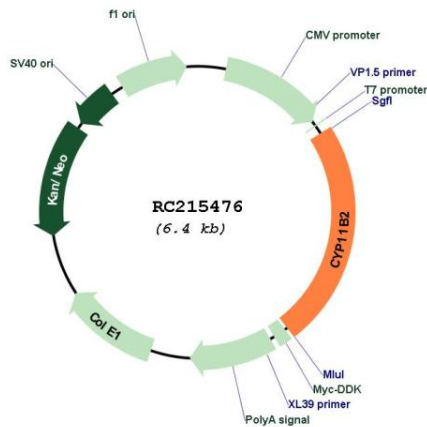
Components: The ORF clone is ion-exchange column purified and shipped in a 2D barcoded Matrix tube containing 10ug of transfection-ready, dried plasmid DNA (reconstitute with 100 ul of water).

- Reconstitution Method:**
1. Centrifuge at 5,000xg for 5min.
 2. Carefully open the tube and add 100ul of sterile water to dissolve the DNA.
 3. Close the tube and incubate for 10 minutes at room temperature.
 4. Briefly vortex the tube and then do a quick spin (less than 5000xg) to concentrate the liquid at the bottom.
 5. Store the suspended plasmid at -20°C. The DNA is stable for at least one year from date of shipping when stored at -20°C.

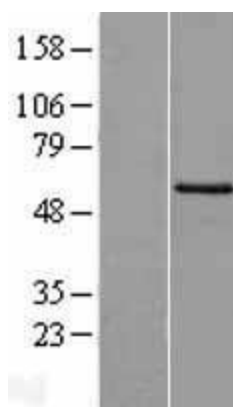
RefSeq: [NM_000498.3](#)
RefSeq Size: 2936 bp
RefSeq ORF: 1512 bp
Locus ID: 1585
UniProt ID: [P19099](#)
Cytogenetics: 8q24.3
Protein Families: Druggable Genome
Protein Pathways: C21-Steroid hormone metabolism, Metabolic pathways
MW: 57.56 kDa

Gene Summary: This gene encodes a member of the cytochrome P450 superfamily of enzymes. The cytochrome P450 proteins are monooxygenases which catalyze many reactions involved in drug metabolism and synthesis of cholesterol, steroids and other lipids. This protein localizes to the mitochondrial inner membrane. The enzyme has steroid 18-hydroxylase activity to synthesize aldosterone and 18-oxocortisol as well as steroid 11 beta-hydroxylase activity. Mutations in this gene cause corticosterone methyl oxidase deficiency. [provided by RefSeq, Jul 2008]

Product images:



Circular map for RC215476



Western blot validation of overexpression lysate (Cat# [LY400169]) using anti-DDK antibody (Cat# [TA50011-100]). Left: Cell lysates from untransfected HEK293T cells; Right: Cell lysates from HEK293T cells transfected with RC215476 using transfection reagent MegaTran 2.0 (Cat# [TT210002]).