

Product datasheet for RC215474

DAPP1 (NM_014395) Human Tagged ORF Clone

Product data:

Product Type:	Expression Plasmids
Product Name:	DAPP1 (NM_014395) Human Tagged ORF Clone
Tag:	Myc-DDK
Symbol:	DAPP1
Synonyms:	BAM32
Mammalian Cell Selection:	Neomycin
Vector:	pCMV6-Entry (PS100001)
E. coli Selection:	Kanamycin (25 ug/mL)
ORF Nucleotide Sequence:	>RC215474 representing NM_014395 Red=Cloning site Blue=ORF Green=Tags(s)

TTTTGTAATACGACTCACTATAGGGCGGCCGGAATTCGTCGACTGGATCCGGTACCGAGGAGATCTGCC
GCC**CGATCGCC**

ATGGGCAGAGCAGAACTTCTAGAAGGGAAGATGAGCACCCAGGATCCCTCAGATCTGTGGAGCAGATCCG
ATGGAGAGGCTGAGCTGCTCCAGGACTTGGGTGGTATCACGGCAACCTCACACGCCATGCTGCTGAAGC
TCTTCTCCTCTCAAATGGATGTGACGGCAGCTACCTTCTGAGGGACAGCAATGAGACCACGGGCTGTAC
TCTCTCTCTGTGAGGGCCAAAGATTCTGTTAAACACTTTCATGTTGAATATACTGGATATTCATTTAAAT
TTGGCTTTAATGAATTCTCATCTTTGAAGATTTTGTCAAGCATTTTGCAAATCAGCCTTTGATTGGAAG
CGAGACAGGCACTCTGATGGTTCTAAAACATCCCTACCCAAGAAAAGTGAAGAACCCTCCATTTATGAA
TCTGTCCGGTTACACAGCAATGCAGACAGGAAGAACAAGATGACCTTGTGCCACAGCACCTTCTC
TGGGCACCAAAGAAGTTACCTCACAAACAGGGAGGCCTGGTCAAGACCTGGAAAAAAGATGGTTTAC
TCTGCACAGGAATGAACTGAAATACTTCAAAGACCAGATGTCACCAGAACCAATTCGGATCCTAGACCTA
ACAGAATGTTTCAGCTGTACAATTCGATTATTCACAAGAAAGGGTAAACTGTTTTTGTGGTATTTCCAT
TCAGGACATTTTATCTCTGTGCAAAGACCGGAGTAGAAGCTGTGAGTGGATCAAGATATTACGCTGGAA
ATTGTCACAAATAAGAAAACAGCTCAACCAAGGGAAGGCACGATCCGATCTCGGTCTCATCTTTAAA

ACGCGTACGCGGCCGCTCGAGCAGAAACTCATCTCAGAAGAGGATCTGGCAGCAAATGATATCCTGGATT
ACAAGGATGACGACGATAAGGTTTAA



[View online »](#)

Protein Sequence: >RC215474 representing NM_014395
Red=Cloning site Green=Tags(s)

MGRAELLEGKMSTQDPSDLWSRSDGEAELLQDLGWYHGNLTRHAAEALLSNGCDGSYLLRDSNETTGLY
 SLSVRAKDSVKHFHVEYTGYSFKFGFNEFSSLKDFVKHFANQPLIGSETGTLMLVKHPYPRKVEEPSIYE
 SVRVHTAMQTGRTEDDL VPTAPSLGTKEGYLTKQGGLVKTWKTRWFTLHRNELKYFKDQMSPEPIRILD
 TECSAVQFDYSQERVNCFCLVFPFRTFYLCAKTGVEADEWIKILRWKLSQIRKQLNQEGTIRSRSFIFK

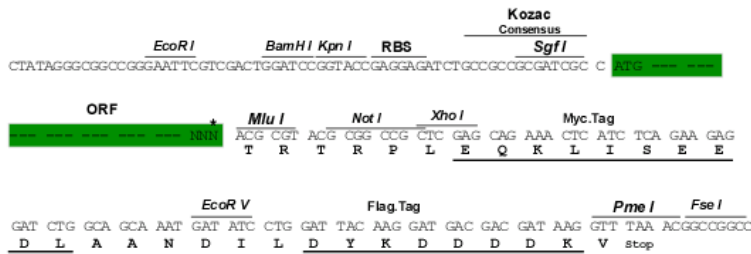
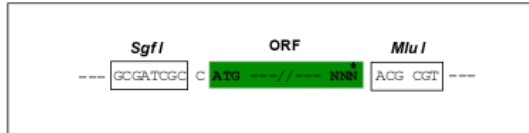
TRTRPLEQKLISEEDLAANDILDYKDDDDKV

Chromatograms: https://cdn.origene.com/chromatograms/mk6044_c04.zip

Restriction Sites: SgfI-MluI

Cloning Scheme:

Cloning sites used for ORF Shuttling:



* The last codon before the Stop codon of the ORF

ACCN: NM_014395

ORF Size: 840 bp

OTI Disclaimer: The molecular sequence of this clone aligns with the gene accession number as a point of reference only. However, individual transcript sequences of the same gene can differ through naturally occurring variations (e.g. polymorphisms), each with its own valid existence. This clone is substantially in agreement with the reference, but a complete review of all prevailing variants is recommended prior to use. [More info](#)

OTI Annotation: This clone was engineered to express the complete ORF with an expression tag. Expression varies depending on the nature of the gene.

Components: The ORF clone is ion-exchange column purified and shipped in a 2D barcoded Matrix tube containing 10ug of transfection-ready, dried plasmid DNA (reconstitute with 100 ul of water).

Reconstitution Method:

1. Centrifuge at 5,000xg for 5min.
2. Carefully open the tube and add 100ul of sterile water to dissolve the DNA.
3. Close the tube and incubate for 10 minutes at room temperature.
4. Briefly vortex the tube and then do a quick spin (less than 5000xg) to concentrate the liquid at the bottom.
5. Store the suspended plasmid at -20°C. The DNA is stable for at least one year from date of shipping when stored at -20°C.

RefSeq: [NM_014395.3](#)

RefSeq Size: 2953 bp

RefSeq ORF: 843 bp

Locus ID: 27071

UniProt ID: [Q9UN19](#)

Cytogenetics: 4q23

Domains: SH2, PH

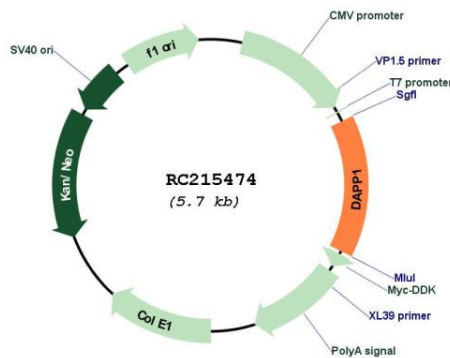
Protein Families: Druggable Genome, Phosphatase

Protein Pathways: B cell receptor signaling pathway

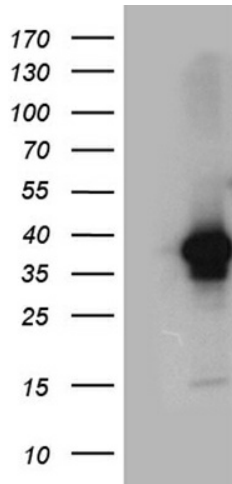
MW: 32.6 kDa

Gene Summary: May act as a B-cell-associated adapter that regulates B-cell antigen receptor (BCR)-signaling downstream of PI3K.[UniProtKB/Swiss-Prot Function]

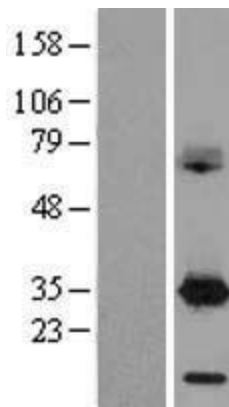
Product images:



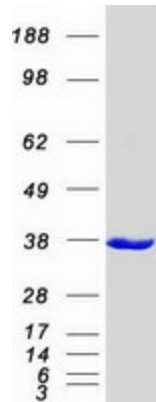
Circular map for RC215474



HEK293T cells were transfected with the pCMV6-ENTRY control (Cat# [PS100001], Left lane) or pCMV6-ENTRY DAPP1 (Cat# RC215474, Right lane) cDNA for 48 hrs and lysed. Equivalent amounts of cell lysates (5 ug per lane) were separated by SDS-PAGE and immunoblotted with anti-DAPP1 (Cat# [TA810236])(1:2000). Positive lysates [LY402326] (100ug) and [LC402326] (20ug) can be purchased separately from OriGene.



Western blot validation of overexpression lysate (Cat# [LY402326]) using anti-DDK antibody (Cat# [TA50011-100]). Left: Cell lysates from untransfected HEK293T cells; Right: Cell lysates from HEK293T cells transfected with RC215474 using transfection reagent MegaTran 2.0 (Cat# [TT210002]).



Coomassie blue staining of purified DAPP1 protein (Cat# [TP315474]). The protein was produced from HEK293T cells transfected with DAPP1 cDNA clone (Cat# RC215474) using MegaTran 2.0 (Cat# [TT210002]).