

Product datasheet for **RC215460**

LARP6 (NM_197958) Human Tagged ORF Clone

Product data:

Product Type:	Expression Plasmids
Product Name:	LARP6 (NM_197958) Human Tagged ORF Clone
Tag:	Myc-DDK
Symbol:	LARP6
Synonyms:	ACHN
Mammalian Cell Selection:	Neomycin
Vector:	pCMV6-Entry (PS100001)
E. coli Selection:	Kanamycin (25 ug/mL)
ORF Nucleotide Sequence:	>RC215460 representing NM_197958 Red=Cloning site Blue=ORF Green=Tags(s)

TTTGTGAATACGACTCACTATAGGGCGGCCGGAATTCGTCGACTGGATCCGGTACCGAGGAGATCTGCC
GCC**CGATCGCC**

ATGGCCAGTCCGGCGGGGAGGCTCGGCCCGGGCCCAAGACGGCGGTGCAGATCCGCGTCGCCATCCAGG
AGGCCGAGGACGTGGACGAGTTGGAGGACGAGGAGGGGGCGGAGACTCGGGGCGCGGGGACCCGGC
CCGGTACCTCAGCCCCGGCTGGGGCAGCGCAGCGAGGAGGCCGAGCCGGGGCACAGGAATAGGAGC
TCGGTGAATTCAAGGACCATGCTTGCTTCGTTTCATTGTATCTTCAGCACCTAGCACAGCACCCAGACA

ACGCGTACGCGGCCGCTCGAGCAGAACTCATCTCAGAAGAGGATCTGGCAGCAAATGATATCCTGGATT
ACAAGGATGACGACGATAAGGTTTAA

Protein Sequence:	>RC215460 representing NM_197958 Red=Cloning site Green=Tags(s)
	MAQSGGEARPGPKTAVQIRVAIQEAEDVDELEDEEEGAETRGAGDPARYLSPGWGSASEEPPSRGHRNRS SVNSRTMLASFIVSSAPSTAPST

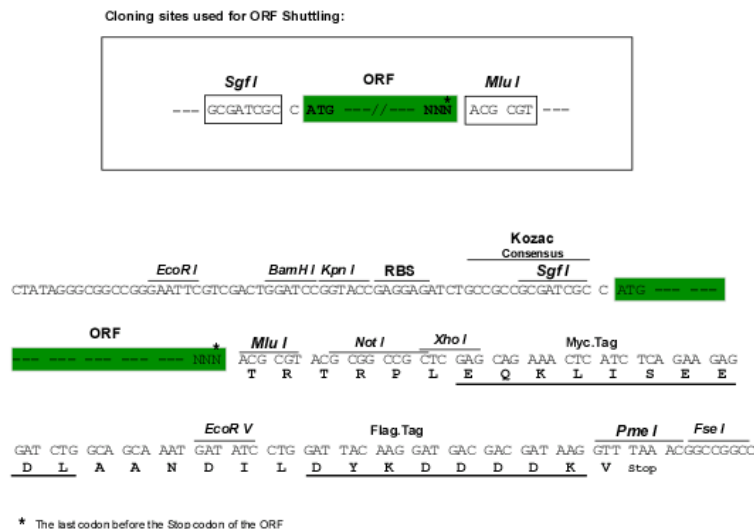
TRTRPLEQKLISEEDLAANDILDYKDDDDKV

Chromatograms: https://cdn.origene.com/chromatograms/mk8027_c04.zip

Restriction Sites: SgfI-MluI



[View online »](#)

Cloning Scheme:


ACCN: NM_197958

ORF Size: 279 bp

OTI Disclaimer: The molecular sequence of this clone aligns with the gene accession number as a point of reference only. However, individual transcript sequences of the same gene can differ through naturally occurring variations (e.g. polymorphisms), each with its own valid existence. This clone is substantially in agreement with the reference, but a complete review of all prevailing variants is recommended prior to use. [More info](#)

OTI Annotation: This clone was engineered to express the complete ORF with an expression tag. Expression varies depending on the nature of the gene.

Components: The ORF clone is ion-exchange column purified and shipped in a 2D barcoded Matrix tube containing 10ug of transfection-ready, dried plasmid DNA (reconstitute with 100 ul of water).

Reconstitution Method:

1. Centrifuge at 5,000xg for 5min.
2. Carefully open the tube and add 100ul of sterile water to dissolve the DNA.
3. Close the tube and incubate for 10 minutes at room temperature.
4. Briefly vortex the tube and then do a quick spin (less than 5000xg) to concentrate the liquid at the bottom.
5. Store the suspended plasmid at -20°C. The DNA is stable for at least one year from date of shipping when stored at -20°C.

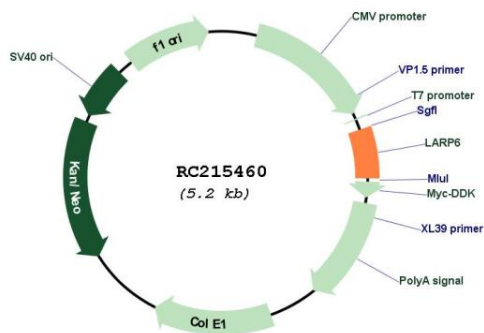
Note: Plasmids are not sterile. For experiments where strict sterility is required, filtration with 0.22um filter is required.

RefSeq: [NM_197958.3](#)

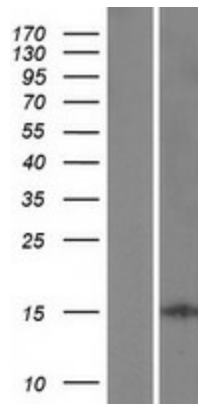
RefSeq Size: 577 bp

RefSeq ORF:	282 bp
Locus ID:	55323
UniProt ID:	<u>Q9BRS8</u>
Cytogenetics:	15q23
MW:	9.6 kDa
Gene Summary:	Regulates the coordinated translation of type I collagen alpha-1 and alpha-2 mRNAs, CO1A1 and CO1A2. Stabilizes mRNAs through high-affinity binding of a stem-loop structure in their 5' UTR. This regulation requires VIM and MYH10 filaments, and the helicase DHX9. [UniProtKB/Swiss-Prot Function]

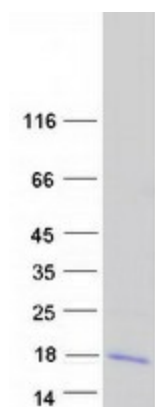
Product images:



Circular map for RC215460



Western blot validation of overexpression lysate (Cat# [LY405156]) using anti-DDK antibody (Cat# [TA50011-100]). Left: Cell lysates from untransfected HEK293T cells; Right: Cell lysates from HEK293T cells transfected with RC215460 using transfection reagent MegaTran 2.0 (Cat# [TT210002]).



Coomassie blue staining of purified LARP6 protein (Cat# [TP315460]). The protein was produced from HEK293T cells transfected with LARP6 cDNA clone (Cat# RC215460) using MegaTran 2.0 (Cat# [TT210002]).