

Product datasheet for **RC215459**

BATF2 (NM_138456) Human Tagged ORF Clone

Product data:

Product Type: Expression Plasmids
 Product Name: BATF2 (NM_138456) Human Tagged ORF Clone
 Tag: Myc-DDK
 Symbol: BATF2
 Synonyms: SARI
 Mammalian Cell Selection: Neomycin
 Vector: pCMV6-Entry (PS100001)
 E. coli Selection: Kanamycin (25 ug/mL)
 ORF Nucleotide Sequence: >RC215459 representing NM_138456
 Red=Cloning site Blue=ORF Green=Tags(s)

TTTTGTAATACGACTCACTATAGGGCGGCCGGAATTCGTCGACTGGATCCGGTACCGAGGAGATCTGCC
 GCC**CGATCGCC**

ATGCACCTCTGTGGGGCAATGGGCTGCTGACCCAGACAGACCCCAAGGAGCAACAAGGCAGCTGAAGA
 AGCAGAAGAACCAGCCAGCCCGCCAGCGAAGCCGGCAGAAGCACACAGACAAGGCAGACGCCCTGCACCA
 GCAGCACGAGTCTCTGAAAAAGACAACCTCGCCCTGCGGAAGGAGATCCAGTCCCTGCAGGCCGAGCTG
 GCGTGGTGGAGCCGACCCTGCACGTGCATGAGCGCTGTGCCCATGGATTGTGCCTCCTGCTCAGCTC
 CAGGGCTCCTGGGCTGCTGGGACCAGGCTGAGGGGCTCCTGGGCCCTGGCCACAGGGACAACATGGCTG
 CCGGGAGCAGCTGGAGCTGTTCCAGACCCCGGGTTCCTGTTACCCAGCTCAGCCGCTCTCTCCAGGTCCA
 CAGCCTCATGATTCTCCAGCCTCCTCCAGTGCCCTGCCCCTACTGTCCCTTGCCCCGCTGTGGTTG
 CTGAACCTCCTGTCCAGCTGTCCCCAGCCCTCTCCTGTTTGCCTCGCACACTGGTTCCAGCCTGCAGGG
 GTCTTCTCTAAGCTCAGTGCCCTCCAGCCAGCCTCACGGCCAAACTGCCCTCCACAGCCCCTCGAG
 CTGGAGCATCCCACAGAGGGAAGCTGGGGTCTCTCCGACAACCCTTCTCTGCCCTGGGGCTTGAC
 GTCTGCAGAGCAGGGAGCACAACCTGCTCTCTCAGCAGCCACTTGGCAAGGGCTGGTTGTGGATCCCAG
 CCCTCACCTCTCTGGCCTTCTCTGCTCTCCTCTGCTCAAGTCCACTTC

ACGCGTACGCGGCCGCTCGAGCAGAAACTCATCTCAGAAGAGGATCTGGCAGCAAATGATATCCTGGATT
 ACAAGGATGACGACGATAAGGTTTAA



[View online »](#)

Protein Sequence: >RC215459 representing NM_138456
Red=Cloning site Green=Tags(s)

MHL CGNGLLTQTDPKQQRQLKKQKNRAAAQRSRQKHTDKADALHQQHESLEKDNLALRKEIQLQAEI
 AWWSRTLHVHERLCPMDCASC SAPGLLG CWDQAEGLLGP GPQGQHGC REQL ELFQTPGSCYPAQPLSPGP
 QPHDPSLLQCPLPSLSLGP AVVAEPPVQLSPSPLLFASHTGSSSLQSSSKLSALQPSLTAQTAPPQPLE
 LEHPTRGKLGSSPDNPSSALGLARLQSRHKPALSAATWQGLVVDPSHPHLLAFPLLSSAQVHF

TRTRPLEQKLISEEDLAANDILDYKDDDDKV

Restriction Sites: SgfI-MluI

Cloning Scheme:

Cloning sites used for ORF Shuttling:



* The last codon before the Stop codon of the ORF

ACCN: NM_138456

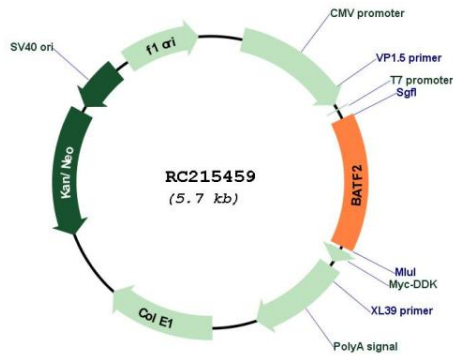
ORF Size: 822 bp

OTI Disclaimer: The molecular sequence of this clone aligns with the gene accession number as a point of reference only. However, individual transcript sequences of the same gene can differ through naturally occurring variations (e.g. polymorphisms), each with its own valid existence. This clone is substantially in agreement with the reference, but a complete review of all prevailing variants is recommended prior to use. [More info](#)

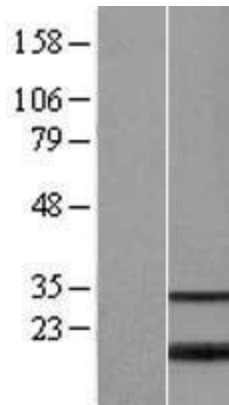
OTI Annotation: This clone was engineered to express the complete ORF with an expression tag. Expression varies depending on the nature of the gene.

Components: The ORF clone is ion-exchange column purified and shipped in a 2D barcoded Matrix tube containing 10ug of transfection-ready, dried plasmid DNA (reconstitute with 100 ul of water).

Reconstitution Method:	<ol style="list-style-type: none">1. Centrifuge at 5,000xg for 5min.2. Carefully open the tube and add 100ul of sterile water to dissolve the DNA.3. Close the tube and incubate for 10 minutes at room temperature.4. Briefly vortex the tube and then do a quick spin (less than 5000xg) to concentrate the liquid at the bottom.5. Store the suspended plasmid at -20°C. The DNA is stable for at least one year from date of shipping when stored at -20°C.
RefSeq:	NM_138456.4
RefSeq Size:	2142 bp
RefSeq ORF:	825 bp
Locus ID:	116071
UniProt ID:	Q8N1L9
Cytogenetics:	11q13.1
Protein Families:	Transcription Factors
MW:	29.2 kDa
Gene Summary:	AP-1 family transcription factor that controls the differentiation of lineage-specific cells in the immune system. Following infection, participates in the differentiation of CD8(+) thymic conventional dendritic cells in the immune system. Acts via the formation of a heterodimer with JUN family proteins that recognizes and binds DNA sequence 5'-TGA[CG]TCA-3' and regulates expression of target genes (By similarity). Selectively suppresses CCN1 transcription and hence blocks the downstream cell proliferation signals produced by CCN1 and inhibits CCN1-induced anchorage-independent growth and invasion in several cancer types, such as breast cancer, malignant glioma and metastatic melanoma. Possibly acts by interfering with AP-1 binding to CCN1 promoter.[UniProtKB/Swiss-Prot Function]

Product images:


Circular map for RC215459



Western blot validation of overexpression lysate (Cat# [LY408606]) using anti-DDK antibody (Cat# [TA50011-100]). Left: Cell lysates from untransfected HEK293T cells; Right: Cell lysates from HEK293T cells transfected with RC215459 using transfection reagent MegaTran 2.0 (Cat# [TT210002]).