

## Product datasheet for **RC215457**

### **ADAM10 (NM\_001110) Human Tagged ORF Clone**

#### **Product data:**

Product Type:	Expression Plasmids
Product Name:	ADAM10 (NM_001110) Human Tagged ORF Clone
Tag:	Myc-DDK
Symbol:	ADAM10
Synonyms:	AD10; AD18; CD156c; CDw156; HsT18717; kuz; MADM; RAK
Mammalian Cell Selection:	Neomycin
Vector:	pCMV6-Entry (PS100001)
E. coli Selection:	Kanamycin (25 ug/mL)



[View online »](#)

**ORF Nucleotide Sequence:**

>RC215457 representing NM\_001110  
 Red=Cloning site Blue=ORF Green=Tags(s)

TTTTGTAATACGACTCACTATAGGGCGGCCGGGAATTCGTCGACTGGATCCGGTACCGAGGAGATCTGCC  
 GCC**CGGATCGCC**

ATGGTGTGCTGAGAGTGTAAATCTGCTCCTCTCCTGGCGCGGGGATGGGAGGTCAGTATGGGAATC  
 CTTTAAATAAATATATCAGACATTATGAAGGATTATCTTACAATGTGGATTCATTACACCAAAAACACCA  
 CGGTGCCAAAAGAGCAGTCTCACATGAAGACCAATTTTTACGTCTAGATTTCCATGCCCATGGAAGACAT  
 TTCAACCTACGAATGAAGAGGGACACTTCCCTTTTCAGTGATGAATTTAAAGTAGAAACATCAAATAAAG  
 TACTTGATTATGATACCTCTCATATTTACTGGACATATTTATGGTGAAGAAGGAGTTTTAGCCATGG  
 GTCTGTTATTGATGGAAGATTTGAAGGATTCATCCAGACTCGTGGTGGCACAATTTATGTTGAGCCAGCA  
 GAGAGATATATTAAGACCGAATCTGCCATTTCACTCTGTCTTTATCATGAAGATGATATTAATATC  
 CCCATAAATACGGTCTCAGGGGGCTGTGCAGATCATTAGTATTTGAAAGAATGAGGAAATACCAGAT  
 GACTGGTGTAGAGGAAGTAACACAGATACCTCAAGAAGAACATGTGCTAATGGTCCAGAATCTCTGAGG  
 AAAAAACGTACAATTCAGCTGAAAAAATACTTGTCTAGCTTTATATTCAGACTGATCATTGTCTTTTA  
 AATATTACGGAACACGAGAAGCTGTGATTGCCAGATATCCAGTCATGTTAAAGCGATTGATACAATTTA  
 CCAGACCACAGACTTCTCCGGAATCCGTAACATCAGTTTCATGGTAAAACGCATAAGAATCAATACAAT  
 GCTGATGAGAAGGACCCTACAAATCCTTTCCGTTTCCAAATATTGGTGTGGAGAAGTTTCTGGAATTGA  
 ATCTGAGCAGAAATCATGATGACTACTGTTTGGCTATGTCTTCACAGACCGAGATTTTGATGATGGCGT  
 ACTTGGTCTGGCTGGGTGGAGCACCTCAGGAAGCTCTGGAGGAATATGTGAAAAAGTAAACTCTAT  
 TCAGATGGTAAGAAGAAGTCTTAAACACTGGAATTTACTGTTCAGAATAATGGTCTCATGTACCTC  
 CCAAAGTCTCTCACATTACTTTTGGCTCAGGAAGTTGGACATAACTTTGGATCCCCACATGATTTGGAAC  
 AGAGTGCACACCAGGAGAATCTAAGAATTTGGGTCAAAAAGAAAATGGCAATTACATCATGTATGCAAGA  
 GCAACATCTGGGGACAACTTAACAACAATAAATTTCTCACTCTGTAGTATTAGAAATATAAGCCAAGTTC  
 TTGAGAAGAAGAGAAAACAACTGTTTTGTTGAATCTGGCCAACCTATTTGTGGAATGGAATGGTAGAACA  
 AGGTGAAGAATGTGATTGTGGCTATAGTGACCAGTGTAAGATGAATGCTGCTTCGATGCAATCAACCA  
 GAGGGAAGAAAATGCAACTGAAACCTGGGAAACAGTGCAAGTCCAAGTCAAGGTCCTTGTGTACAGCAC  
 AGTGTGCATTCAAGTCAAAGTCTGAGAAGTGTGGGATGATTGAGACTGTGCAAGGGAAGGAATATGTAA  
 TGGCTTACAGCTCTCTGCCAGCATCTGACCCTAAACCAAACTTCACAGACTGTAAATAGGCATACACAA  
 GTGTGCATTAATGGCAATGTGCAGGTTCTATCTGTGAGAAATATGGCTTAGAGGAGTGTACGTGTGCCA  
 GTTCTGATGGCAAAGATGATAAAGAATTATGCCATGTATGCTGTATGAAGAAAATGGACCCATCAACTTG  
 TGCCAGTACAGGGTCTGTGCAAGTGGAGTAGGCACTTCAGTGGTGAACCATCACCCCTGCAACCTGGATCC  
 CCTTGAACGATTTTAGAGGTTACTGTGATGTTTTATGCGGTGCAGATTAGTAGATGCTGATGGTCCTC  
 TAGCTAGGCTTAAAAAGCAATTTTAGTCCAGAGCTCTATGAAAACATTGCTGAATGGATTGTGGCTCA  
 TTGGTGGGCAATTAATGTTGGAATGCTCTGATCATGCTAATGGCTGGATTTAATAGATATGCAGT  
 GTTCATACTCAAAGTAGTAATCCAAAGTTGCCTCCTCTAAACCACTTCCAGGCACTTTAAAGAGGAGGA  
 GACCTCCACAGCCATTCAGCAACCCAGCGTCAGCGGCCCCGAGAGAGTTATCAATGGGACACATGAG  
 ACGC

**ACGCGT**ACGCGGCCGCTCGAGCAGAAACTCATCTCAGAAGAGGATCTGGCAGCAAATGATATCCTGGATT  
 ACAAGGATGACGACGATAAGGTTTAA



**OTI Disclaimer:** Due to the inherent nature of this plasmid, standard methods to replicate additional amounts of DNA in E. coli are highly likely to result in mutations and/or rearrangements. Therefore, OriGene does not guarantee the capability to replicate this plasmid DNA. Additional amounts of DNA can be purchased from OriGene with batch-specific, full-sequence verification at a reduced cost. Please contact our customer care team at [custsupport@origene.com](mailto:custsupport@origene.com) or by calling 301.340.3188 option 3 for pricing and delivery.

The molecular sequence of this clone aligns with the gene accession number as a point of reference only. However, individual transcript sequences of the same gene can differ through naturally occurring variations (e.g. polymorphisms), each with its own valid existence. This clone is substantially in agreement with the reference, but a complete review of all prevailing variants is recommended prior to use. [More info](#)

**OTI Annotation:** This clone was engineered to express the complete ORF with an expression tag. Expression varies depending on the nature of the gene.

**Components:** The ORF clone is ion-exchange column purified and shipped in a 2D barcoded Matrix tube containing 10ug of transfection-ready, dried plasmid DNA (reconstitute with 100 ul of water).

**Reconstitution Method:**

1. Centrifuge at 5,000xg for 5min.
2. Carefully open the tube and add 100ul of sterile water to dissolve the DNA.
3. Close the tube and incubate for 10 minutes at room temperature.
4. Briefly vortex the tube and then do a quick spin (less than 5000xg) to concentrate the liquid at the bottom.
5. Store the suspended plasmid at -20°C. The DNA is stable for at least one year from date of shipping when stored at -20°C.

**Note:** Plasmids are not sterile. For experiments where strict sterility is required, filtration with 0.22um filter is required.

**RefSeq:** [NM\\_001110.4](#)

**RefSeq Size:** 3927 bp

**RefSeq ORF:** 2247 bp

**Locus ID:** 102

**UniProt ID:** [O14672](#)

**Cytogenetics:** 15q21.3

**Domains:** Reprolysin, DISIN

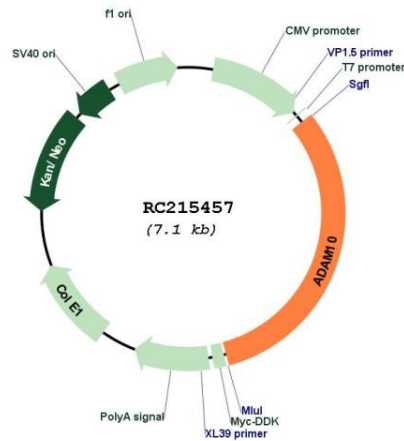
**Protein Families:** Druggable Genome, Protease, Transmembrane

**Protein Pathways:** Alzheimer's disease, Epithelial cell signaling in Helicobacter pylori infection

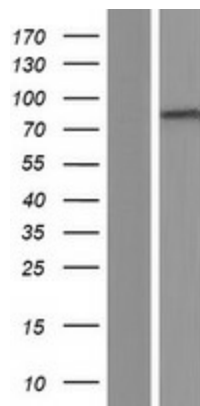
**MW:** 84 kDa

**Gene Summary:**

Members of the ADAM family are cell surface proteins with a unique structure possessing both potential adhesion and protease domains. This gene encodes an ADAM family member that cleaves many proteins including TNF-alpha and E-cadherin. Alternate splicing results in multiple transcript variants encoding different proteins that may undergo similar processing. [provided by RefSeq, Feb 2016]

**Product images:**


Circular map for RC215457



Western blot validation of overexpression lysate (Cat# [LY420127]) using anti-DDK antibody (Cat# [TA50011-100]). Left: Cell lysates from untransfected HEK293T cells; Right: Cell lysates from HEK293T cells transfected with RC215457 using transfection reagent MegaTran 2.0 (Cat# [TT210002]).