

Product datasheet for **RC215451**

TRIM71 (NM_001039111) Human Tagged ORF Clone

Product data:

Product Type:	Expression Plasmids
Product Name:	TRIM71 (NM_001039111) Human Tagged ORF Clone
Tag:	Myc-DDK
Symbol:	TRIM71
Synonyms:	HYDCC1; LIN-41; LIN41
Mammalian Cell Selection:	Neomycin
Vector:	pCMV6-Entry (PS100001)
E. coli Selection:	Kanamycin (25 ug/mL)



[View online »](#)

**ORF Nucleotide
Sequence:**

>RC215451 representing NM_001039111
 Red=Cloning site Blue=ORF Green=Tags(s)

TTTTGTAATACGACTCACTATAGGGCGGCCGGGAATTCGTCGACTGGATCCGGTACCGAGGAGATCTGCC
 GCC**CGGATCGCC**

ATGGCTTCGTTCCCCGAGACCGATTTCAGATCTGCTTGTGTGCAAGGAGATGTGCGGCTCGCCGGCGC
 CGCTCTCCTCCAACCTCGTCCGCGTCGTCTCTCCTCGCAGACGTCCACGTCTGCGGGGGCGCGCGCGG
 GGGCCCTGGGGCGCGCGCGCCGCTACACGTCTGCCCTGCCCTGCACGCCCTTCTGCGCCCTGCCTC
 GAGGCGCACCGGCTGCCGGCGCGGGCGCGCGCGGGAGAGCCGCTCAAGCTGCGCTGCCCGTGT
 GCGACCAGAAAGTAGTGCTAGCCGAGGCGGGGTATGGACGCGTGCCTTCGTCGCCCTTCTGCTTAG
 CAACCTGCTCGACGCGGTGGTGGCCACTGCCGACGAGCCGCCCAAGAACGGGCGCGCGCGCTCCG
 GCGGGAGCGGGGCCACAGCAACCACCGGCACCAGCTACCACGCGCACCCGCGCGCTCCGCTCCG
 CGCGCCACTCCCGAGGCGCCGACGCCCGCGCTTCCGCTCGGCACCCGGCGCCCTGCCGTTT
 CCCGTGCGCGTCTGCTCCGCCCTCTACGGTGCAGCTCGTGGATGAGGGCAACGCAGCTTCTTCG
 CGCTGCCTCGACTGCCAGGAGCACTGTGCGACAACTGCGTCCGAGCGCACCCAGCGGTGCCCTACCA
 AGGACCACTACATCGAGCGCGCCCGCCGGTCCCGGTGCCGACGAGCGCGCAGCAGCTCGGGCTCGG
 GCCGCCCTTCCCGGCCGCCCTTCTCCATCTCTCAGTGTTCGAGCGCCTCGGCTTCTGCCAGCAC
 CACGACGACGAGGTGCTGCACCTGTACTGTGACTTGTCTGTACCCATCTGTCGTGAGTGACAATGG
 GCCGGCATGGGGCCACAGTTCATCTACCTCCAGGAGGCACTGCAGGACTCACGGGCACTACCATCCA
 GCTGCTGGCAGATGCCAGCAGGGACGACAGGCAATCCAGCTGAGCATCGAGCAGGCCAGAGCGTGGCG
 GAACAGGTGGAGATGAAGGCGAAGTTGTGAGTGGAGGTCAAAGCCGTGACGGCGAGGCATAAGAAAG
 CCCTGGAGGAACGCGAGTGTGAGTGTGTGGAAGGTAGAAAAGATCCGCCAGGTGAAAGCCAAGTCTCT
 GTACCTGCAGGTGGAGAAGCTGCGGCAAACTCAACAAGCTTGAGAGCACCATCAGTGCCGTGACGAG
 GTCCTGGAGGAGGTAGAGCGCTAGACATCTACTGGCCGAGACCGGATGCTGGCCAGGTGACGAGAC
 TGAAGACCGTGGGAGCCTCCTGCAGCCCCAGGAAGACGACCGAGTATGTTACACCCCCCGATCAGGC
 ACTGTACCTTGCCATCAAGTCTTTGGCTTTGTTAGCAGCGGGCCTTGGCCCACTCACCAAGGCCACA
 GGCGATGGCCTCAAGCGTCCCTCCAGGGTAAGGTGGCTCCTTACAGTCATTGGTTATGACCAGATG
 GTGAGCCCCGCTCTCAGGAGGCGACCTGATGTCGGCTGGTCTGGGCCCTGATGGCAACCTGTTTGG
 TGCAGAGGTGAGTATCAGCAGAATGGACATACGTGGTGGTACCGACCCAGCTGGAGGTGAGCAC
 CTGGTATCTGTGACTGTGCAACCAGCACATTGAGAACAGCCCTTCAAGGTGGTGGTCAAGTCAGGCC
 GCAGCTACGTGGGCAATGGGCTCCCGGGCTGAGCTTCGGCAGTGAGGGTACAGCGATGGCAAGCTCTG
 CCGCCCTTGGGGTGTGAGTGTAGACAAGGAGGGTACATCATTGTCGCCGACCGCAGCAACAACCGCATC
 CAGGTGTTCAAGCCCTGCGGCGCCTTCCACCACAAATTCGGCACCTGGGCTCCCGGCTGGGCAGTTTCG
 ACCGACCGCCGGCGTGGCTGTGACGCTCACGAGGATCGTGGTGGCTGACAAGGACAATCATCGCAT
 CCAGATCTTACGTTGAGGGCCAGTTCCTCCTCAAGTTTGGTGAAGAAAGCAAGCAAGTGGGCAGTTC
 AACTACCTTGGGATGTGGCGTGAATTCTGAGGGCAAGATCCTGGTCTCAGACACGAGGAACCCGGA
 TCCAGCTGTTGGGCTGATGGTGTCTTCTAAACAAGTATGGCTCGAGGGGCTCTCTGAAGCACTT
 TGACTCCCCACGGGGTGTGGCCTTCAACCATGAGGGCCACTTGGTGGTCACTGACTTCAACAACCCCGG
 CTCTGGTTATTACCCCGACTGCCAGTCGGCAGCTTCTGGGCTCGGAGGGCACAGGCAATGGGCAAT
 TCTGCGCCACAAAGGGTAGCTGTGGACCAGGAAGGGCGCATATTGTGGCGGATTCCAGGAACCATCG
 GGTACAGATGTTTGAATCCAACGGCAGCTTCTGTGCAAGTTTGGTGTCAAGGCAGCGCTTGGGCGAG
 ATGGACCGCCCTTCCGGCATCGCCATCACCCCGACGGAATGATCGTTGTGGTGGACTTTGGCAACAATC
 GAATCCTCGTCTTC

ACGGTACGCGGCGGCTCGAGCAGAACTCATCTCAGAAGAGGATCTGGCAGCAATGATATCTGGATT
 ACAAGGATGACGACGATAAGGTTTAA

Protein Sequence: >RC215451 representing NM_001039111
 Red=Cloning site Green=Tags(s)

MASFPETDFQICLLCKEMCGSPAPLSSNSSASSSSSTSTSSGGGGGGPAAARRLHVLPC LHAF CRPCL
 EAHRLPAAGGGAAGEPLKLRCPVCDQKVLAEAAGMDALPSSAFLLSNLLDAVVATADEPPPKNGRAGAP
 AGAGGHSNHRHHHAHPRASASAPLPQAPQPPAPSRAPGPPAASPSALLLRRPHGCSSCDEGNAASS
 RCLDCQEHLCDNCVRAHQVRVRLTKDHYIERGPPGPGAAAAAQQQLGLGPPFPGPPFSILSVFPERLGFQCQ
 HDDEVLHL YCDTCSVPICRECTMGRHGGHSFIYLQEALQDSRALTIQLLAD AQQGRQAIQLSIEQAQTVA
 EQVEMKAKVVQSEVKAVTARHKKALEERECELLWKVEKIRQVKAKSLYLQVEKLRQNLNKLESTISAVQQ
 VLEEGRALDILLARDRMLAQVQELKTVRSLLQPQEDDRVMFTPPDQALYLAIKSFGFVSSGAFAPLTKAT
 GDGLKRALQGVASFVTIGYDHDGEPRLSGGDLMSAVVLGPDGNLFGAEVSDQQNGTYVVSYPQLEGEH
 LVSVTLCNQHIENSFPKVVVKSGRSYVIGLPLGSLFGSEGSDGKLCRPWGVSVDKEGYIIVADSRNNRI
 QVFKPCGAFHHKFGTLGSRPQFDRPAGVACDASRRIVVADKDNHRIQIFTFEQGFLKFKGEKGTKNQF
 NYPWDVAVNSEGKILVSDTRNHRIQLFGPDGVFLNKYGFEGALWKHFDSPRGVAFNHEGHLVVTDFNNHR
 LLVIHPDCQSARFLGSEGTGNGQFLRPQGVAVDQEGRIIVADSRNHRVQMFESNGSFLCKFGAQGSGFGQ
 MDRPSGIAITPDGMIVVDFGNNRILVF

TRTRPLEQKLISEEDLAANDILDYKDDDDKV

Chromatograms: https://cdn.origene.com/chromatograms/mk8027_d08.zip

Restriction Sites: SgfI-MluI

Cloning Scheme:

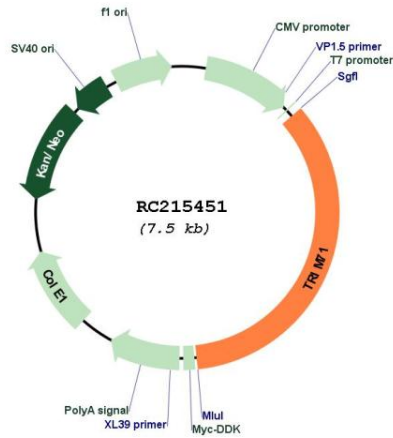
Cloning sites used for ORF Shuttling:



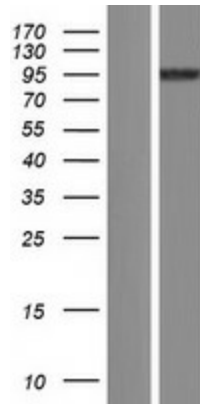
* The last codon before the Stop codon of the ORF

ACCN:	NM_001039111
ORF Size:	2604 bp
OTI Disclaimer:	<p>Due to the inherent nature of this plasmid, standard methods to replicate additional amounts of DNA in E. coli are highly likely to result in mutations and/or rearrangements. Therefore, OriGene does not guarantee the capability to replicate this plasmid DNA. Additional amounts of DNA can be purchased from OriGene with batch-specific, full-sequence verification at a reduced cost. Please contact our customer care team at custsupport@origene.com or by calling 301.340.3188 option 3 for pricing and delivery.</p> <p>The molecular sequence of this clone aligns with the gene accession number as a point of reference only. However, individual transcript sequences of the same gene can differ through naturally occurring variations (e.g. polymorphisms), each with its own valid existence. This clone is substantially in agreement with the reference, but a complete review of all prevailing variants is recommended prior to use. More info</p>
OTI Annotation:	This clone was engineered to express the complete ORF with an expression tag. Expression varies depending on the nature of the gene.
Components:	The ORF clone is ion-exchange column purified and shipped in a 2D barcoded Matrix tube containing 10ug of transfection-ready, dried plasmid DNA (reconstitute with 100 ul of water).
Reconstitution Method:	<ol style="list-style-type: none"> 1. Centrifuge at 5,000xg for 5min. 2. Carefully open the tube and add 100ul of sterile water to dissolve the DNA. 3. Close the tube and incubate for 10 minutes at room temperature. 4. Briefly vortex the tube and then do a quick spin (less than 5000xg) to concentrate the liquid at the bottom. 5. Store the suspended plasmid at -20°C. The DNA is stable for at least one year from date of shipping when stored at -20°C.
RefSeq:	NM_001039111.3
RefSeq Size:	3138 bp
RefSeq ORF:	2607 bp
Locus ID:	131405
UniProt ID:	Q2Q1W2
Cytogenetics:	3p22.3
MW:	93.2 kDa
Gene Summary:	The protein encoded by this gene is an E3 ubiquitin-protein ligase that binds with miRNAs and maintains the growth and upkeep of embryonic stem cells. This gene also is involved in the G1-S phase transition of the cell cycle. [provided by RefSeq, Dec 2015]

Product images:



Circular map for RC215451



Western blot validation of overexpression lysate (Cat# [LY422015]) using anti-DDK antibody (Cat# [TA50011-100]). Left: Cell lysates from untransfected HEK293T cells; Right: Cell lysates from HEK293T cells transfected with RC215451 using transfection reagent MegaTran 2.0 (Cat# [TT210002]).