

## Product datasheet for **RC215450**

### SLCO1A2 (NM\_134431) Human Tagged ORF Clone

#### Product data:

Product Type:	Expression Plasmids
Product Name:	SLCO1A2 (NM_134431) Human Tagged ORF Clone
Tag:	Myc-DDK
Symbol:	SLCO1A2
Synonyms:	OATP; OATP-A; OATP1A2; SLC21A3
Mammalian Cell Selection:	Neomycin
Vector:	pCMV6-Entry (PS100001)
E. coli Selection:	Kanamycin (25 ug/mL)



[View online »](#)

**ORF Nucleotide Sequence:**

>RC215450 representing NM\_134431  
 Red=Cloning site Blue=ORF Green=Tags(s)

TTTTGTAATACGACTCACTATAGGGCGGCCGGGAATTCGTCGACTGGATCCGGTACCGAGGAGATCTGCC  
 GCC**CGCATCGCC**

ATGGGAGAACTGAGAAAAGAATTGAAACCCATAGAATAAGATGTCTTTCAAGTTGAAGATGTTTCTGT  
 TGCAATAACATGTGCATTTGTATCCAAAACACTGTCTGGATCTTATATGAATTCATGCTCACACAAAT  
 AGAGAGACAATCAACATCCCAACATCTCTAGTTGGATCATTAAATGGAAGCTTTGAGATTGGAAATCTT  
 TTGTTGATTATTTGTGAGTTATTTTGAACCAAACACTGCATAGACCTATAATGATTGGCATTGGATGTG  
 TGGTTATGGGCTTAGGCTGTTTCTTAAATCACTACCTCATTTCCTCATGAACCAATATGAATATGAATC  
 TACAGTTTCAGTTTCAGGCAACTGTCTCAAACAGTTTCTTGTGTATGGAAAATGGAACCCAGATTTTA  
 AGACCAACGCAGGATCCATCAGAGTGTACAAAGGAAGTTAAATCATTAAATGTGGGTGTACGCTCTAGTAG  
 GCAATATTGTACGTGGAATGGGTGAAACTCCCATCCTGCCTTTGGGTATTTCTATATAGAAGATTTTGC  
 CAAATTTGAAAATTCCTTTTATATATTGGGCTGTAGAAACAGGAGCTATTATTGGTCTTTGATCGGA  
 CTTTTGTTGGCATTCTGTGCAAAATGTTTATGTTGACACTGGATTTGTGAACACAGATGATCTGATCA  
 TAACTCCCACTGACACTCGTTGGGTGCGTGCATGGTGGTTTGGCTTTCTGATTTGTGCAGGAGTTAACGT  
 GCTCACTGCCATTCCTTTTTCTTTTTGCCCAACACACTTCCAAAGGAAGGACTAGAGACTAATGCTGAC  
 ATCATTAAAAATGAAAATGAAGACAAAACAAAAGAAGAGGTCAAGAAGGAAAAATATGGAATCACTAAAG  
 ATTTTCTACCTTTCATGAAAAGTCTTTCCTGCAATCCAATTTATATGCTTTTCATACTTGTAAAGTGTGAT  
 ACAGTTCAATGCATTCGTTAACATGATCCTTCATGCCTAAATACCTAGAACAGCAATATGGAATATCA  
 TCTTCAGATGCAATCTTCTAATGGGTATTTATAACTTACCTCCAATATGTATTGGATATATAATTGGTG  
 GTTTAATTATGAAGAAGTCAAGATTACTGTCAAACAAGCTGCCACATAGGATGTTGGTTATCCTTACT  
 TGAGTATCTTCTCTATTTTTTATCTTTTTCTCATGACTTGTGAAAATTCCTCAGTTGTTGGAATAAATACC  
 TCTTATGAAGGAATCCACAAGATTTATATGTGAAAATGACATCTTTGCTGATTGCAATGTGGATTGCA  
 ACTGTCCATCTAAAATATGGGATCCTGTGTGTGAAAACAATGGCTTGTCTATCTGTGAGCTTGTCTTGC  
 TGGTTGTGAGACATCCATTGGAACGGGAATAAACATGGTGTTCAAAATTCAGCTGATTCAAACATCA  
 GGAAATTCATCTGCAGTTCTTGGGCTGTGCGACAAAGGACCTGACTGTTCCCTTGATGCTCCAGTACTTCC  
 TAATCTTGTGAGGATGAGCAGTTTCATTTATTCTTTGGCTGCCATACCTGGATATATGGTTCTCTTGAG  
 GTGTATGAAATCTGAAGAGAAGTCCCTTGGTGTGGGATTACATACATTTTGCACAAGAGTATTTGCTGGC  
 ATTCCTGCACCTATATATTTGGCGCTTAAATGGATTCCACATGTTTACACTGGGAACTTTGAAATGTG  
 GTGAGTCAGGGGATGCAGGATATATGATTCCACCACCTTCAGATACATCTACCTCGGATTGCCCGCAGC  
 ACTAAGAGGATCAAGCTTTGTTCCAGCCTTAATCATCTTAATTCTTTTGGGAAGTGTCTACCTGGT  
 GAAAATGCCTCTTCAGGAACAGAGCTTATAGAGACAAAAGTCAAAGGGAAGGAAAATGAGTGCAAAGATA  
 TATACAAAAGTCCACGGTTTTGAAAGATGATGAATTGAAAACAAATG

**ACGCGT**ACGCGGCCGCTCGAGCAGAACTCATCTCAGAAGAGGATCTGGCAGCAATGATATCCTGGATT  
 ACAAGGATGACGACGATAAGGTTTAA



**Reconstitution Method:**

1. Centrifuge at 5,000xg for 5min.
2. Carefully open the tube and add 100ul of sterile water to dissolve the DNA.
3. Close the tube and incubate for 10 minutes at room temperature.
4. Briefly vortex the tube and then do a quick spin (less than 5000xg) to concentrate the liquid at the bottom.
5. Store the suspended plasmid at -20°C. The DNA is stable for at least one year from date of shipping when stored at -20°C.

**RefSeq:** [NM\\_134431.3](#)

**RefSeq Size:** 3389 bp

**RefSeq ORF:** 2013 bp

**Locus ID:** 6579

**UniProt ID:** [P46721](#)

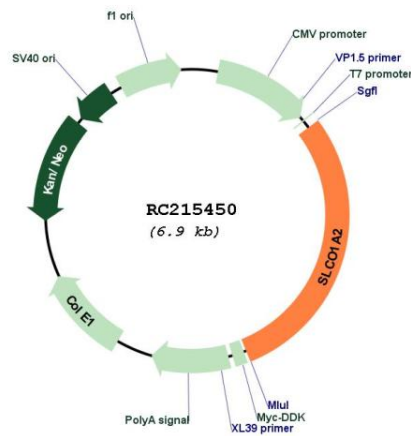
**Cytogenetics:** 12p12.1

**Protein Families:** Transmembrane

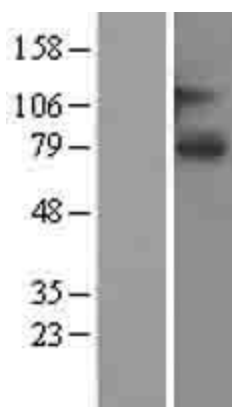
**MW:** 74 kDa

**Gene Summary:** This gene encodes a sodium-independent transporter which mediates cellular uptake of organic ions in the liver. Its substrates include bile acids, bromosulphophthalein, and some steroidal compounds. The protein is a member of the SLC21A family of solute carriers. Alternative splicing of this gene results in multiple transcript variants. [provided by RefSeq, Dec 2008]

### Product images:



Circular map for RC215450



Western blot validation of overexpression lysate (Cat# [LY403345]) using anti-DDK antibody (Cat# [TA50011-100]). Left: Cell lysates from untransfected HEK293T cells; Right: Cell lysates from HEK293T cells transfected with RC215450 using transfection reagent MegaTran 2.0 (Cat# [TT210002]).