

Product datasheet for **RC215444**

KLHDC7A (NM_152375) Human Tagged ORF Clone

Product data:

Product Type:	Expression Plasmids
Product Name:	KLHDC7A (NM_152375) Human Tagged ORF Clone
Tag:	Myc-DDK
Symbol:	KLHDC7A
Mammalian Cell Selection:	Neomycin
Vector:	pCMV6-Entry (PS100001)
E. coli Selection:	Kanamycin (25 ug/mL)



[View online »](#)

ORF Nucleotide
Sequence:

>RC215444 representing NM_152375
Red=Cloning site Blue=ORF Green=Tags(s)

TTTTGTAATACGACTCACTATAGGGCGGCCGGGAATTCGTCGACTGGATCCGGTACCGAGGAGATCTGCC
GCC**CGGATCGCC**

ATGTTCCCCAGAGGAGCAGAGGCCAGGACTGGCATTGGATATGCAGCTGACCGCAAGGTGGTGTCTGT
CAGCCCGCTGCCCTGCTCCTGGTGACTGTGGCCTACAGGCTGTACAAGTCGAGGCCTGCCAGCCAGCG
GTGGGGTGGGAATGGCCAGGCAGAACCCAAAGGAGGAAGCAGAGGGCTCAGGGCAGCCTGTGTACAGGAG
GCTTCTCCTGGGGTGTCTCCTGAGGGGGCCAAGACGTCGGAGGAGCAGCAAGCGGGCTGAAGCACCACAGG
GCTGCAGCTGTGAGAATCCAAGAGGCCCTATGTCCTGGTCACGGGGGCCACTTCCACAGACAGGAAGCC
CCAGAGAAAAGGCTCAGGTGAGGAGCGGGCGGGCAGGGCTCGGACTCTGAGCAGGTGCCTCCTTGTCTGC
CCCAGCCAGGAAACCAGAACAGCTGTTGGCAGTAACCCTGACCCTCCCCATTTCCCCGCTTGGGCAGCG
AACCGAAGAGCTCCCAGCTGGACTCATTGCAGCAGCCGACGGCAGCTGTGCCGGTGGTGAAGCCTTCTCC
ATGGCAGGACAGTAAACCCCGTGAAGCAGTCCAGGACTGGGGCAACTAGAACCTCCCCTGCTCACTACGTG
GCTCCCTTGCAAGGCAGCAGTGACATGAACCAGAGCTGGGTCTTACCCGTGTGATAGGGGTGAGCAGAG
AAGAGGCTGGGGCTCTCGAGGCTGCCTCCGATGTTGACCTGACCTGCATCAGCAGGAGGGCGCCCCAA
CTCCTCTATACCTTCTCATCCATAGCCCGCGTCCGAATGGAGGAGCATTTCATACAGAAGGCGGAGGGG
GTTGAGCCCCGGCTCAAGGGCAAGGTGTACGACTACTATGTGGAATCTACCTCTCAGGCCATCTCCAGG
GCAGGCTGGTCCCAGGACAGCAGCCCTGACTGAGGTTCCATCCCCTAGGCCACCGCCAGGGTCCCTGGG
AACAGGGGCTGCCTCGGGAGGCCAAGCCGGTGACACAAAGGGTGCAGCCGAAAGAGCCGCTCCCCGAG
ACAGGGCCGTGGCCCTCCACCCGAGGCTTCAGCCGGAAGGAGAGCCTTCTGCAGATAGCGGAGAACCAG
AGCTGCAGCTGCAGCCAGATGGCTTCCGGCTCCCGCTCCACCTGCCAGACCCGGGGCCCTGCCTGG
CTTAGGCAGAAGCAGCCGGGAGCCCATGTGCAGCCGGTGGCCGGGACCAATTTCTTCCATATCCCGCTC
ACCCCTGCTTCAGCCCCACAGGTCGCTGGATCTGGGCAATTGCTATGAGGTGCTGACCTTGGCCAAGA
GGCAGAACCTGGAGGCCCTGAAAGAGGCGGCTACAAGGTGATGAGCGAAAACCTGCAGGTGCTGCG
CAGCCCGGACATCTACGGGTGCCTGAGCGGGCAGAGCGGAGCTGATCCTGCAGCGCCGGCTCCGGGGC
CGCCAGTACCTGGTGGTGGCTGACGTGTGCCCCAAGGAAGACTCCGGCGGCTCTGTTGCTATGACGATG
AGCAGGATGTCTGGCGCCGCTGGCTCGCATGCCCCCGAGGCGGTGCCCGGGCTGTGCCATCTGCAG
TCTTTCAATTATCTTTCGTGGTGTCCGGCTGCCAGGGGCCCGGCACCCAGCCCTCCAGCCGCTCTTC
TGCTACAACCCGCTCACGGGATCTGGAGCGAGGTGTGCCCGCTGAACCAGGCCCGCCGACTGCCGGC
TGGTGGCCCTGGACGGGCACCTGTATGCCATCGGCGGAGAGTGTCTGAACCTCGGTGGAGCGTTACGACCC
CCGCTGGACCGCTGGGACTTTGCCCGCCGCTCCCCAGTGACACGTTCCGCCCTGGCGCACACGGCCACG
GTGCGTGGCAAGGAAATCTTCGTACCCGGCGGCTCGCTGCGCTTCTGCTGTTCCGCTTCTCTGCGCAGG
AGCAGCGCTGGTGGGCGGCCCCACCGGGGCAGCAAGGACCGCAGGCCGAGATGGTGGCGGTCAACGG
CTTTCTTACCGCTTTGACCTCAACCGCAGCCTGGGCATCGCCGTGTACCGCTGCAGCGCCAGCACC
CTCTGGTACGAGTGCGCCACGTACCGGACGCCTTACCCGGATGCCTTCCAGTGCAGCGCGTGGTGGACAACC
TCATCTACTGCGTGGGACGCCGGAGCACCCTCTGCTTCTTAGCAGACTCTGTCTACCCAGGTTTGTGCC
CAAGGAGCTGCGGAGTTTCCCGCCCCGAGGGCACCCCTCTGCCACCGTCTGACCTTGGCCACCCCC
GATTTGCCTCAGACCAGGTC

ACGCGTACGCGGCCGCTCGAGCAGAAACTCATCTCAGAAGAGGATCTGGCAGCAAATGATATCCTGGATT
ACAAGGATGACGACGATAAGGTTTAA

Protein Sequence: >RC215444 representing NM_152375
Red=Cloning site Green=Tags(s)

MFPRGAEAQDWHLDMQLTGKVVLSAAALLLVTVAYRLYKSRPAPAQRWGGNGQAEAKEEAEGSGQPAVQE
ASPGVLLRGPRISSKRAEAPQGCSCENPRGPYVLTGATSTDRKPQRKGSGEERGGQSDSEQVPPCC
PSQETRTAVGSNPDPHFPRLGSEPKSSPAGLIAAADGSCAGGEPSPWQDSKPREHPGLGQLEPPHCHYV
APLQGSDDMNQSWVFTRVIGVSREEAGALEAASDVDLTLHQEGAPNSSYTFSSIARVRMEEHFQKAE
VEPRLKGVYDYVVESTSQAIQFQRLAPRTAALTEVPSRPPPGSLGTGAASGGQAGDTKGAERAASPQ
TGPWPSTRGFSRKESELLQIAENPELQLQPDGFRLPAPPCDPGALPGLGRSSREPHVQPVAGTNFFHIPL
TPASAPQVRLDLGNCYEVLTLAKRQNLEALKEAAYKVMSENYLQVLRSPDIYGCLSGAERELILQRRLRG
RQYLVVADVCPKEDSGGLCCYDDEQDVWRPLARMPPEAVSRGCAICSLFNLYFVVSQCQPGHQPSRVF
CYNPLTGIWSEVCPLNQARPHCRLVALDGHLAIGGECLNSVERYDPRDRWDFAPPLPSDTFALAHTAT
VRAKEIFVTGSLRFLFRFSAQEQRWWAGPTGGSKDRTAEMVAVNGFLYRFDLNRSLGIAVYRCSASTR
LWYECATYRTPYDAFQCAVVDNLIYCVGRRSTLCFLADSVSPRFVPKELRSFPAPQGTLLPTVLTPT
DLPQTRV

TRTRPLEQKLISEEDLAANDILDYKDDDDKV

Chromatograms: https://cdn.origene.com/chromatograms/mk8012_e03.zip

Restriction Sites: Sgfl-Mlul

Reconstitution Method:

1. Centrifuge at 5,000xg for 5min.
2. Carefully open the tube and add 100ul of sterile water to dissolve the DNA.
3. Close the tube and incubate for 10 minutes at room temperature.
4. Briefly vortex the tube and then do a quick spin (less than 5000xg) to concentrate the liquid at the bottom.
5. Store the suspended plasmid at -20°C. The DNA is stable for at least one year from date of shipping when stored at -20°C.

RefSeq: [NM_152375.2](#), [NP_689588.2](#)

RefSeq Size: 5070 bp

RefSeq ORF: 2334 bp

Locus ID: 127707

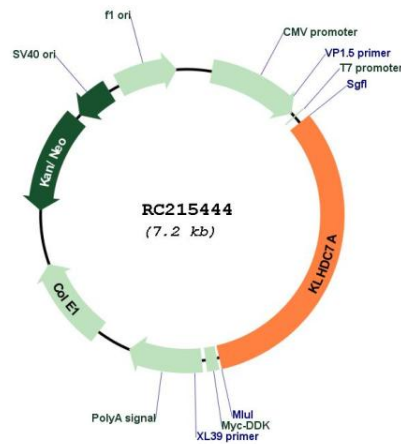
UniProt ID: [Q5VTI3](#)

Cytogenetics: 1p36.13

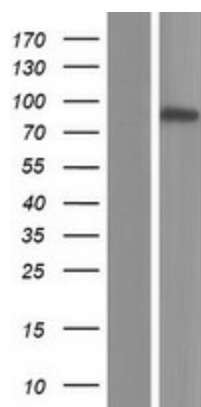
Protein Families: Transmembrane

MW: 84.3 kDa

Product images:



Circular map for RC215444



Western blot validation of overexpression lysate (Cat# [LY407622]) using anti-DDK antibody (Cat# [TA50011-100]). Left: Cell lysates from untransfected HEK293T cells; Right: Cell lysates from HEK293T cells transfected with RC215444 using transfection reagent MegaTran 2.0 (Cat# [TT210002]).