

Product datasheet for RC215438

IMMP2L (NM_032549) Human Tagged ORF Clone

Product data:

Product Type: Expression Plasmids
Product Name: IMMP2L (NM_032549) Human Tagged ORF Clone
Tag: Myc-DDK
Symbol: IMMP2L
Synonyms: IMMP2L-IT1; IMP2; IMP2-LIKE
Mammalian Cell Selection: Neomycin
Vector: pCMV6-Entry (PS100001)
E. coli Selection: Kanamycin (25 ug/mL)
ORF Nucleotide Sequence: >RC215438 representing NM_032549
 Red=Cloning site Blue=ORF Green=Tags(s)

TTTTGTATACGACTCACTATAGGGCGGCCGGAATTCGTCGACTGGATCCGGTACCGAGGAGATCTGCC
 GCCCGCATCGCC

ATGGCACAGTCACAAGGGTGGGTGAAAAGATACATCAAGGCCTTTTGTAAAGGCTTCTTTGTGGCGGTGC
 CTGTGGCAGTGACTTTCTTGGATCGGGTCGCCTGTGTGGCAAGAGTAGAAGGAGCATCGATGCAGCCTTC
 TTTGAATCCTGGGGGAGCCAGTCATCTGATGTGGTGCTTTTGAACCACTGGAAAGTGAGGAATTTTGA
 GTACACCGTGGTGACATTGTATCATTGGTGTCTCTAAAAACCCAGAACAGAAGATCATTAAAGAGAGTGA
 TTGCTCTTGAAGGAGATATTGTGAGAACCATAGGACACAAAAACCGGTATGTCAAAGTCCCCCGTGGTCA
 CATCTGGGTTGAAGGTGATCATCATGGACACAGTTTGTACAGTAATTCTTTTGGGCCGGTTTCCCTAGGA
 CTTCTGCATGCCATGCCACACATATCCTGTGGCCCCAGAGCGCTGGCAGAAATTGGAATCTGTCTTTC
 CTCCAGAGCGCTTACCAGTACAGAGAGAAGAGGAA

ACGCGTACGCGGCCGCTCGAGCAGAACTCATCTCAGAAGAGGATCTGGCAGCAAATGATATCCTGGATT
 ACAAGGATGACGACGATAAGGTTTAA

Protein Sequence: >RC215438 representing NM_032549
 Red=Cloning site Green=Tags(s)
 MAQSQGWVKRYIKAFCKGFFVAVPVAVTFLDRVACVARVEGASMQPSLNPQGSQSSDVLLNHWKVRNFE
 VHRGDIVSLVSPKNPEQKIIKRVIALEGDIVRTIGHKNRYVKVPRGHIWVEGDHGHGSFDSNSFGPVS LG
 LLHAHATHILWPPERWQKLESVLPPERLPVQREEE

TRTRPLEQKLISEEDLAANDILDYKDDDDKV

Chromatograms: https://cdn.origene.com/chromatograms/mk8011_d05.zip


[View online »](#)

Restriction Sites: SgfI-MluI

Cloning Scheme:



ACCN: NM_032549

ORF Size: 525 bp

OTI Disclaimer: Due to the inherent nature of this plasmid, standard methods to replicate additional amounts of DNA in E. coli are highly likely to result in mutations and/or rearrangements. Therefore, OriGene does not guarantee the capability to replicate this plasmid DNA. Additional amounts of DNA can be purchased from OriGene with batch-specific, full-sequence verification at a reduced cost. Please contact our customer care team at custsupport@origene.com or by calling 301.340.3188 option 3 for pricing and delivery.

The molecular sequence of this clone aligns with the gene accession number as a point of reference only. However, individual transcript sequences of the same gene can differ through naturally occurring variations (e.g. polymorphisms), each with its own valid existence. This clone is substantially in agreement with the reference, but a complete review of all prevailing variants is recommended prior to use. [More info](#)

OTI Annotation: This clone was engineered to express the complete ORF with an expression tag. Expression varies depending on the nature of the gene.

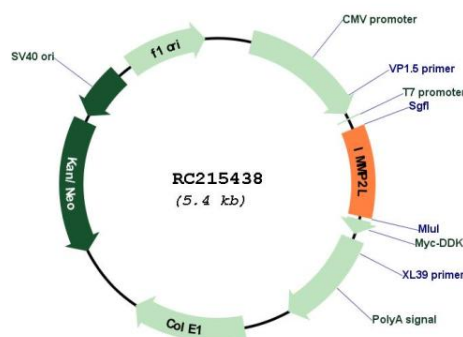
Components: The ORF clone is ion-exchange column purified and shipped in a 2D barcoded Matrix tube containing 10ug of transfection-ready, dried plasmid DNA (reconstitute with 100 ul of water).

Reconstitution Method:

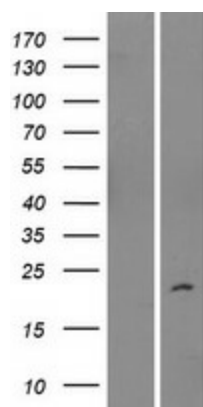
1. Centrifuge at 5,000xg for 5min.
2. Carefully open the tube and add 100ul of sterile water to dissolve the DNA.
3. Close the tube and incubate for 10 minutes at room temperature.
4. Briefly vortex the tube and then do a quick spin (less than 5000xg) to concentrate the liquid at the bottom.
5. Store the suspended plasmid at -20°C. The DNA is stable for at least one year from date of shipping when stored at -20°C.

| | |
|--------------------------|---|
| Note: | Plasmids are not sterile. For experiments where strict sterility is required, filtration with 0.22um filter is required. |
| RefSeq: | NM_032549.4 |
| RefSeq Size: | 1540 bp |
| RefSeq ORF: | 528 bp |
| Locus ID: | 83943 |
| UniProt ID: | Q96T52 |
| Cytogenetics: | 7q31.1 |
| Domains: | Peptidase_S26 |
| Protein Families: | Druggable Genome, Protease |
| MW: | 19.5 kDa |
| Gene Summary: | This gene encodes a protein involved in processing the signal peptide sequences used to direct mitochondrial proteins to the mitochondria. The encoded protein resides in the mitochondria and is one of the necessary proteins for the catalytic activity of the mitochondrial inner membrane peptidase (IMP) complex. Two variants that encode the same protein have been described for this gene. [provided by RefSeq, Sep 2011] |

Product images:



Circular map for RC215438



Western blot validation of overexpression lysate (Cat# [LY410038]) using anti-DDK antibody (Cat# [TA50011-100]). Left: Cell lysates from untransfected HEK293T cells; Right: Cell lysates from HEK293T cells transfected with RC215438 using transfection reagent MegaTran 2.0 (Cat# [TT210002]).