

Product datasheet for RC215436

OR5P3 (NM_153445) Human Tagged ORF Clone

Product data:

Product Type:	Expression Plasmids
Product Name:	OR5P3 (NM_153445) Human Tagged ORF Clone
Tag:	Myc-DDK
Symbol:	OR5P3
Synonyms:	JCG1
Mammalian Cell Selection:	Neomycin
Vector:	pCMV6-Entry (PS100001)
E. coli Selection:	Kanamycin (25 ug/mL)
ORF Nucleotide Sequence:	>RC215436 representing NM_153445 Red=Cloning site Blue=ORF Green=Tags(s)

TTTTGTAATACGACTCACTATAGGGCGGCCGGAATTCGTCGACTGGATCCGGTACCGAGGAGATCTGCC
GCC**CGATCGCC**

ATGGGGACTGAAATGACACCACTGTGGTAGAGTTTACTCTTTTGGGGTTATCCGAGGATACTACAGTTT
GTGCTATTTTATTTCTTGTTTCTAGGAATTTATGTTGTCACCTTAATGGGTAATATCAGCATAATTGT
ATTGATCAGAAGAAGTCATCATCTTCATACACCCATGTACATTTTCTCTGCCATTTGGCCTTTGTAGAC
ATTGGGTACTCCTCATCAGTCACACCTGTCATGCTCATGAGCTTCTAAGGAAAGAAACCTCTCCCTG
TTGCTGGTTGTGGCCAGCTCTGTTCTGTAGTGACGTTTGGTACGGCCGAGTGCTTCTGCTGGCTGC
CATGGCCTATGATCGCTATGTGGCCATCTGCTCACCCCTGCTCTACTCTACCTGCATGTCCCTGGAGTC
TGATCATCTTAGTGGGCATGTCCTACCTGGGTGGATGTGTGAATGCTTGGACATTCATTGGCTGCTTAT
TAAGACTGTCTTCTGTGGGCCAAATAAAGTCAATCACTTTTTCTGTGACTATTCACCACTTTTGAAGCT
TGCTTGTTCATGATTTTACTTTTAAATAATCCAGCTATCTCTTCTGGATCTATCATTGTGGCCACT
GTGTGTGCATAGCCATATCCTACATCTATCCTCATCACCATCCTGAAGATGCACTCCACCAAGGGCC
GCCACAAGGCCTTCTCCACCTGCACCTCCACCTCACTGCAGTCACTCTGTTCTATGGGACCATTACCTT
CATTTATGTGATGCCAAGTCCAGCTACTCAACTGACCAGAACAAGGTGGTGTCTGTGTTCTACACCGTG
GTGATTTCCATGTTGAACCCCTGATCTACAGCCTCAGGAACAAGGAGATTAAGGGGGCTCTGAAGAGAG
AGCTTAGAATAAAAAATATTTTCT

ACGCGTACGCGGCCGCTCGAGCAGAAACTCATCTCAGAAGAGGATCTGGCAGCAAATGATATCCTGGATT
ACAAGGATGACGACGATAAGGTTTAA



[View online »](#)

Protein Sequence: >RC215436 representing NM_153445
Red=Cloning site Green=Tags(s)

MGTGNDTTVVEFTLLGLSEDTTVCAILFLVFLGIYVVTLMGNISIIIVLIRRSHHLHTPMYIFLCHLAFVD
 IGYSSSVTPVMLMSFLRKETSLPVAGCVAQLCSVVTFGTAECFLLAAMAYDRYVAICSPLLYSTCMSPGV
 CIILVGM SYLGGCVNAWTFIGCLLRLSFCGPNKVNHFCDYSPLLKLACSHDFTFEIIPAISSGSIIVAT
 VCVIAISYIYILITILKMHSTKGRHKAFSTCTSHLTAVTLFYGTITFIYVMPKSSYSTDQNKVVSVFYTV
 VIPMLNPLIYSLRNKEIKGALKRELRIKIFS

TRTRPLEQKLISEEDLAANDILDYKDDDDKV

Chromatograms: https://cdn.origene.com/chromatograms/mk6117_e02.zip

Restriction Sites: SgfI-MluI

Cloning Scheme:



ACCN: NM_153445

ORF Size: 933 bp

OTI Disclaimer: The molecular sequence of this clone aligns with the gene accession number as a point of reference only. However, individual transcript sequences of the same gene can differ through naturally occurring variations (e.g. polymorphisms), each with its own valid existence. This clone is substantially in agreement with the reference, but a complete review of all prevailing variants is recommended prior to use. [More info](#)

OTI Annotation: This clone was engineered to express the complete ORF with an expression tag. Expression varies depending on the nature of the gene.

Components: The ORF clone is ion-exchange column purified and shipped in a 2D barcoded Matrix tube containing 10ug of transfection-ready, dried plasmid DNA (reconstitute with 100 ul of water).

Reconstitution Method:

1. Centrifuge at 5,000xg for 5min.
2. Carefully open the tube and add 100ul of sterile water to dissolve the DNA.
3. Close the tube and incubate for 10 minutes at room temperature.
4. Briefly vortex the tube and then do a quick spin (less than 5000xg) to concentrate the liquid at the bottom.
5. Store the suspended plasmid at -20°C. The DNA is stable for at least one year from date of shipping when stored at -20°C.

RefSeq: [NM_153445.1](#), [NP_703146.1](#)

RefSeq Size: 936 bp

RefSeq ORF: 936 bp

Locus ID: 120066

UniProt ID: [Q8WZ94](#)

Cytogenetics: 11p15.4

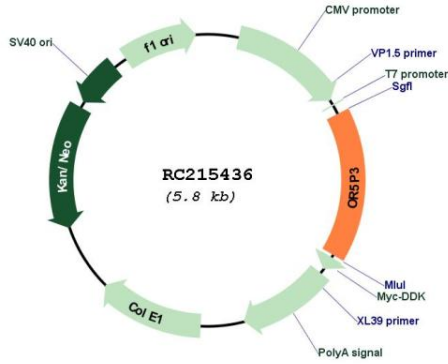
Protein Families: Druggable Genome, Transmembrane

Protein Pathways: Olfactory transduction

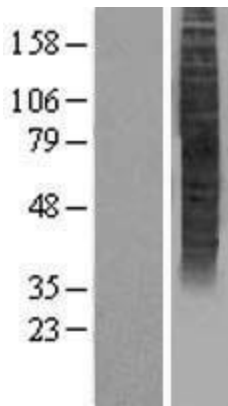
MW: 34.1 kDa

Gene Summary: Olfactory receptors interact with odorant molecules in the nose, to initiate a neuronal response that triggers the perception of a smell. The olfactory receptor proteins are members of a large family of G-protein-coupled receptors (GPCR) arising from single coding-exon genes. Olfactory receptors share a 7-transmembrane domain structure with many neurotransmitter and hormone receptors and are responsible for the recognition and G protein-mediated transduction of odorant signals. The olfactory receptor gene family is the largest in the genome. The nomenclature assigned to the olfactory receptor genes and proteins for this organism is independent of other organisms. [provided by RefSeq, Jul 2008]

Product images:



Circular map for RC215436



Western blot validation of overexpression lysate (Cat# [LY403511]) using anti-DDK antibody (Cat# [TA50011-100]). Left: Cell lysates from untransfected HEK293T cells; Right: Cell lysates from HEK293T cells transfected with RC215436 using transfection reagent MegaTran 2.0 (Cat# [TT210002]).