

Product datasheet for **RC215435**

GAB2 (NM_080491) Human Tagged ORF Clone

Product data:

Product Type:	Expression Plasmids
Product Name:	GAB2 (NM_080491) Human Tagged ORF Clone
Tag:	Myc-DDK
Symbol:	GAB2
Mammalian Cell Selection:	Neomycin
Vector:	pCMV6-Entry (PS100001)
E. coli Selection:	Kanamycin (25 ug/mL)



[View online »](#)

ORF Nucleotide
Sequence:

>RC215435 representing NM_080491
Red=Cloning site Blue=ORF Green=Tags(s)

TTTTGTAATACGACTCACTATAGGGCGGCCGGAATTCGTCGACTGGATCCGGTACCGAGGAGATCTGCC
GCCGCGATCGCC

ATGAGCGGCGGCCGACGTGGTGTGCACCGGCTGGCTGAGGAAATCGCCTCCCAGAAGAAGTTGAGGC
GCTATGCCTGGAAGAAACGCTGGTTTATCCTGCGGAGTGCCGGATGAGCGGTGACCCAGATGTTCTGGA
ATACTACAAGAACGATCACTCCAAGAAGCCTCTGCGGATCATCAACCTGAACTTCTGTGAGCAGGTAGAT
GCAGGCCGTGACCTTTAACAAGAAGGAGCTGCAGGATAGTTTTGTGTTTGACATCAAGACCAGTGAACGCA
CCTTTTACCTGGTGGCTGAGACAGAAGAGGACATGAATAAGTGGTCCAGAGCATCTGCCAGATCTGTGG
CTTCAATCAGGCTGAGGAGAGCACAGACTCCCTGAGAAATGTTTCTCAGCCGGTATGGCCCCGCTCT
TCTCCAGCTGAGCTCAGCAGCTTAGCCAGCACCTTCTCCGAGAGCGCAAGTCTCAGCCCCATCACACT
CCAGCCAGCCAACCTGTTCACGTTTGAACCCCTGTGTCAAACCATGCAGCCCACCTGTCCACCAG
CGCACCTCAGGAGTATCTACTTGCACCAGTGCATAAGCCGAAGAGCAGAAAATGCAAGGAGTGCCAGC
TTCTCTCAGGGCACCCAGAGCCTCTTTTCTCATGAGGAGTGACACAGCTGTACAAAACTTGCCCAGGGCA
ATGGACACTGTGTCAACGGGATCAGTGGTCAAGTCCATGGCTTCTATAGCCTTCCCAAGCCGAGCCGGCA
CAATACAGAATTCAGAGACAGTACCTACGACCTCCCCCGAGCCTGGCCTCCCATGGCCACACCAAGGGC
AGCCTCACAGGCTCCGAGACAGATAATGAGGATGTGTACACCTTCAAGACGCCAGCAACACCCTGTGCA
GGGAGTTTGGGGACCTCCTGGTAGACAATATGGATGTTCCGGCCACCCACTCTCAGCCTACCAGATCCC
TAGGACATTCCTCTGGACAAAAACCACAATGCCATGACAGTGGCCACTCCTGGGACTCAGCCATAGCT
CCCCACCCCGCCCCCAAGCCAAGTCAGGCAGAAACACCTCGATGGGGCAGTCTCAGCAGAGACCCGC
CAATCAGTGAAAAATAGCAGATCTGTGCTGCCACCATCCCAGACGCAACACCCTCCCTGCAATGGACAA
CAGCCGACTTACCGAGCTTCTTCTGTGAGACCTACGAGTACCCACAGCGTGGTGGAGAGAGTGCAGGC
CGGTCTGCTGAATCCATGAGTGTGAGTGGCTCTTTCTGCCAGGAAAATGATTGTGGGCCGATCGG
ACAGCACCAATTCGAAGACAATATGTGCCATGAATCCAGTTCCTCCACCCTGTTGGCCATGGAACG
AGCAGGTGATAATCCCAGAGCGTCTACATCCCAATGAGCCAGGGGCCATCACTTTGACTCACTTGGC
TACCCATCAACAACCCTTCTGTGCACCGAGGCCCCAGCAGAGGAAGTGAATTCAGCCACCCCTGTCA
ACCGCAACCTCAAACCTGATCGGAAAGCAAAGCCAACACCCTTGACCTGAGGAACAACACCGTCATCGA
TGAATCCCCTTCAAGTCACTATACCAAGTCTTGGTCTAGGGCCAACCACACCTTCAACTCCAGCTCC
TCCCAGTACTGCCGCCATCTCCACCCAGAGCATCACCAGCACAGACTCAGGAGACAGCGAAGAGAAT
ATGTCCCTATGCAAAACCCAGTGTCTGCATCTCCCGTTCCAGTGGCACGAAACAGTCTGCCCTAAGAA
GAGCACCGGCAGCGTTGATTATCTGGCCCTGGACTTCCAGCCGAGCTCCCAAGCCCCACCGCAAGCCA
TCTACTTCATCCGTACCTCTGATGAGAAGGTGGACTACGTTTCAGGTGGACAAGGAGAAGACCCAGGCC
TGAGAACACCATGCAGGAGTGGACAGACGTGCGGCAGTCTCGGAGCCTTCAAGGGTGCCAAGCTG

ACGCGTACGCGGCCGCTCGAGCAGAACTCATCTCAGAAGAGGATCTGGCAGCAATGATATCCTGGATT
ACAAGGATGACGACGATAAGGTTTAA

Protein Sequence: >RC215435 representing NM_080491
Red=Cloning site Green=Tags(s)

```
MSGGGDVVCTGWLKSPPEKKLRRYAWKKRWFILRSGRMSGDPDVL EYKNDHSSKPLRIINLNFCEQVD
AGLTFNKELQDSFVFDIKTSERTFYLVAETEEDMNKVVQSICQICGFNQAEESTDLRNVSSAGHGPRS
SPAELSSSSQHLLRERKSSAPSHSSQPTLFTFEPVSNHMQPTLSTAPQEYLYLHQICISRRANARSAS
FSQGTRASFLMRSDTAVQKLAQGNHGCVNGISGQVHGFYSLPKPSRHNTFRDSTYDLPRSLASHGHTKG
SLTGSETDNEDVYTFKTPSNLCREFGDLLVDNMDVPATPLSAYQIPRTFTLDKNHNAMTVATPGDSAIA
PPRPPPKPSQAETPRWGSPPQRPPISENSRVAATIPRNTLPAMDNSRLHRASSCETYEYPQGGESAG
RSAESMSDGVGSFLPGKMIVGRSDSTNSEDNYVPMNPGSSTLLAMERAGDNSQSVYIPMSPGAHHFDSL G
YPSTTLPVHRGSRGSEIQPPPVNRNLKPRKAKPTPLDLRNNTVIDELPKSPIKSWSRANHTFNSSS
SQYCRPISTQSI TSDSGDSEENYVPMQNPVSASPVPSGTNSPAPKKSTGSVDYLALDFQPSSSPHRPK
STSSVTSDEKVDYVQVDKEKTQALQNTMQEWDVRSSEPSKGAKL
```

TRTRPLEQKLISEEDLAANDILDYKDDDDKV

Chromatograms: https://cdn.origene.com/chromatograms/mk6170_f02.zip

Restriction Sites: SgfI-MluI

Cloning Scheme:



ACCN: NM_080491

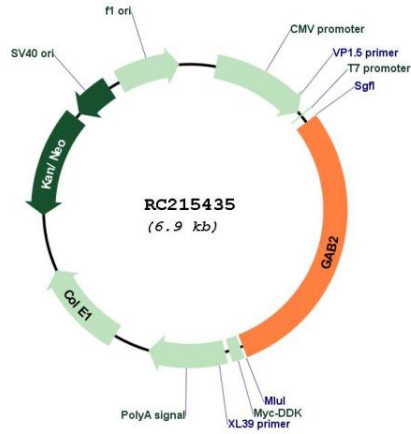
ORF Size: 2028 bp

OTI Disclaimer: The molecular sequence of this clone aligns with the gene accession number as a point of reference only. However, individual transcript sequences of the same gene can differ through naturally occurring variations (e.g. polymorphisms), each with its own valid existence. This clone is substantially in agreement with the reference, but a complete review of all prevailing variants is recommended prior to use. [More info](#)

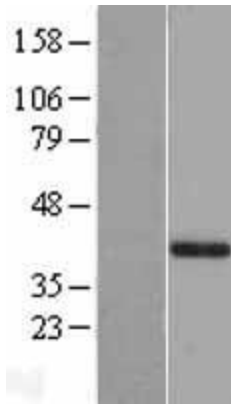
OTI Annotation: This clone was engineered to express the complete ORF with an expression tag. Expression varies depending on the nature of the gene.

Components:	The ORF clone is ion-exchange column purified and shipped in a 2D barcoded Matrix tube containing 10ug of transfection-ready, dried plasmid DNA (reconstitute with 100 ul of water).
Reconstitution Method:	<ol style="list-style-type: none">1. Centrifuge at 5,000xg for 5min.2. Carefully open the tube and add 100ul of sterile water to dissolve the DNA.3. Close the tube and incubate for 10 minutes at room temperature.4. Briefly vortex the tube and then do a quick spin (less than 5000xg) to concentrate the liquid at the bottom.5. Store the suspended plasmid at -20°C. The DNA is stable for at least one year from date of shipping when stored at -20°C.
RefSeq:	NM_080491.3
RefSeq Size:	6007 bp
RefSeq ORF:	2031 bp
Locus ID:	9846
UniProt ID:	Q9UQC2
Cytogenetics:	11q14.1
Protein Families:	Druggable Genome
Protein Pathways:	Chronic myeloid leukemia, Fc epsilon RI signaling pathway, Fc gamma R-mediated phagocytosis
MW:	74.3 kDa
Gene Summary:	This gene is a member of the GRB2-associated binding protein (GAB) gene family. These proteins contain pleckstrin homology (PH) domain, and bind SHP2 tyrosine phosphatase and GRB2 adapter protein. They act as adapters for transmitting various signals in response to stimuli through cytokine and growth factor receptors, and T- and B-cell antigen receptors. The protein encoded by this gene is the principal activator of phosphatidylinositol-3 kinase in response to activation of the high affinity IgE receptor. Two alternatively spliced transcripts encoding different isoforms have been described for this gene. [provided by RefSeq, Nov 2009]

Product images:



Circular map for RC215435



Western blot validation of overexpression lysate (Cat# [LY403310]) using anti-DDK antibody (Cat# [TA50011-100]). Left: Cell lysates from untransfected HEK293T cells; Right: Cell lysates from HEK293T cells transfected with RC215435 using transfection reagent MegaTran 2.0 (Cat# [TT210002]).