

## Product datasheet for **RC215434**

### IRF5 (NM\_001098627) Human Tagged ORF Clone

#### Product data:

Product Type:	Expression Plasmids
Product Name:	IRF5 (NM_001098627) Human Tagged ORF Clone
Tag:	Myc-DDK
Symbol:	IRF5
Synonyms:	SLEB10
Mammalian Cell Selection:	Neomycin
Vector:	pCMV6-Entry (PS100001)
E. coli Selection:	Kanamycin (25 ug/mL)



[View online »](#)

**ORF Nucleotide Sequence:**

>RC215434 representing NM\_001098627  
 Red=Cloning site Blue=ORF Green=Tags(s)

TTTTGTAATACGACTCACTATAGGGCGGCCGGAATTCGTCGACTGGATCCGGTACCGAGGAGATCTGCC  
 GCC**CGCATCGCC**

ATGAACCAGTCCATCCCAGTGGCTCCCACCCACCCCGCGCTGCGGCTGAAGCCCTGGCTGGTGCC  
 AGGTGAACAGCTGCCAGTACCCAGGCTTCAATGGGTCAACGGGAAAAGAAATTATTCTGCATCCCTG  
 GAGGCATGCCACAAGGCATGGTCCCAGCCAGGACGGAGATAACACCATCTTCAAGGCCTGGGCAAGGAG  
 ACAGGGAAATACACCGAAGGCGTGGATGAAGCCGATCCGGCCAAGTGGAAGGCCAACCTGCGCTGTGCC  
 TTAACAAGAGCCGGGACTTCCGCTCATCTACGACGGGCCCGGACATGCCACCTCAGCCCTACAAGAT  
 CTACGAGGTCTGCTCCAATGGCCCTGCTCCACAGACTCCAGCCCTGAGGATTACTCTTTTGGTGCA  
 GGAGAGGAGGAGAAGAAGGAAGAGCTGCAGAGGATGTTGCCAAGCCTGAGCCTCACAGAGGATGTCA  
 AGTGGCCGCCACTCTGCAGCCGCCACTCTGCAGCCGCCGTTGGTGTGGTCCCCTGCTCCAGACCC  
 CAGCCCCCTGGCTCCTCCCCTGGCAACCTGCTGGCTTACGGGAGCTTCTCTCTGAGGTCTGGAGCCT  
 GGGCCCCCTGCCTGCCAGCCTGCCCTGCAGGCGAACAGCTCCTGCCAGACCTGCTGATCAGCCCCACA  
 TGCTGCCTCTGACCGACCTGGAGATCAAGTTTCACTACGGGGGCGGCCACCCCGGGCCCTCACCATCAG  
 CAACCCCATGGCTGCCGGCTCTTCTACAGCCAGCTGGAGGCCACCCAGGAGCAGGTGGAACCTTTCGGC  
 CCCATAAGCCTGGAGCAAGTGCCTTCCCAGCCCTGAGGACATCCCAGTGACAAGCAGCGCTTCTACA  
 CGAACCAGCTGCTGGATGCTTGGACCGCGGGCTCATCTCCAGCTACAGGGCCAGGACCTTTATGCCAT  
 CCGCTGTGTCAAGTGTCTGGAGCGGGCTCATCTCCAGCTACAGGGCCAGGACCTTTATGCCAT  
 ATCCAGCGGGAGGTCAAGACCAAGCTTTTACGCTGGAGCATTTTCTCAATGAGCTCATCTGTTCCAAA  
 AGGGCCAGACCAACACCCACCCTCGAGATCTTCTGCTTTGGGGAAGAATGCCCTGACCGCAA  
 ACCCCGAGAGAAGAAGCTCATTACTGTACAGGTGGTGCCTGTAGCAGCTCGACTGCTGAGATGTTT  
 TCAGGGGAGCTATCTTGGTCAGCTGATAGTATCCGGCTACAGATCTCAAACCCAGACCTCAAAGACCGCA  
 TGGTGGAGCAATTCAAGGAGCTCCATCACATCTGGCAGTCCCAGCAGCGTTGCAGCCTGTGGCCAGGC  
 CCTCCTGGAGCAGGCCTTGGTGTGGCCAGGGCCCTGGCTATGCACCCAGCTGGCATGCAA

**ACGCGT**ACGCGGCCGCTCGAGCAGAAACTCATCTCAGAAGAGGATCTGGCAGCAAATGATATCTGGATT  
 ACAAGGATGACGACGATAAGGTTTAA

**Protein Sequence:**

>RC215434 representing NM\_001098627  
 Red=Cloning site Green=Tags(s)

MNQSI PVAPT PPRRRLK PVLVAQVNSCQYPGLQWVNGEKKLFCIPWRHATRHGPSQDGDNTIFKAWAKE  
 TGKYTEGVDEADPAKWKANLRALNKSDFRLIYDGRDMPQPQYKIYEVCSNGPAPTDSQPPEDYSFGA  
 GEEEEEEELQRMLPSLSLTEDVKWPPTLQPPTLQPPVVLGPPAPDPSPLAPPPGNPAGFRELLSEVLEP  
 GPLPASLPPAGEQLLPDLLISPHMLPLTDLEIKFYRGRPPRALTISNPHGCRIFYSQLEATQEVELFG  
 PISLEQVRFPSPEDIPSDKQRFYTNQLLDVLDRLILQLQGQDLYAIRLCQCKVFWSGPCASAHDSQPNP  
 IQREVKTKLFSLEHFLNELILFQKQNTNPPPFIEFFCFGEWPDPRKPREKKLITVQVVPVAARLLLEMF  
 SGELSWSADSIQLQISNPDLDKRMVEQFKELHHIWSQQRLQPVAQAPPGAGLGVGQGPWPMHPAGMQ

**TR**TRPLEQKLI SEEDLAANDILDYKDDDDKV

**Chromatograms:**

[https://cdn.origene.com/chromatograms/mk6505\\_c10.zip](https://cdn.origene.com/chromatograms/mk6505_c10.zip)

**Restriction Sites:**

Sgfl-Mlul

**Cloning Scheme:**


**ACCN:** NM\_001098627

**ORF Size:** 1464 bp

**OTI Disclaimer:** The molecular sequence of this clone aligns with the gene accession number as a point of reference only. However, individual transcript sequences of the same gene can differ through naturally occurring variations (e.g. polymorphisms), each with its own valid existence. This clone is substantially in agreement with the reference, but a complete review of all prevailing variants is recommended prior to use. [More info](#)

**OTI Annotation:** This clone was engineered to express the complete ORF with an expression tag. Expression varies depending on the nature of the gene.

**Components:** The ORF clone is ion-exchange column purified and shipped in a 2D barcoded Matrix tube containing 10ug of transfection-ready, dried plasmid DNA (reconstitute with 100 ul of water).

**Reconstitution Method:**

1. Centrifuge at 5,000xg for 5min.
2. Carefully open the tube and add 100ul of sterile water to dissolve the DNA.
3. Close the tube and incubate for 10 minutes at room temperature.
4. Briefly vortex the tube and then do a quick spin (less than 5000xg) to concentrate the liquid at the bottom.
5. Store the suspended plasmid at -20°C. The DNA is stable for at least one year from date of shipping when stored at -20°C.

**RefSeq:** [NM\\_001098627.1](#), [NP\\_001092097.1](#)

**RefSeq Size:** 2870 bp

**RefSeq ORF:** 1497 bp

**Locus ID:** 3663

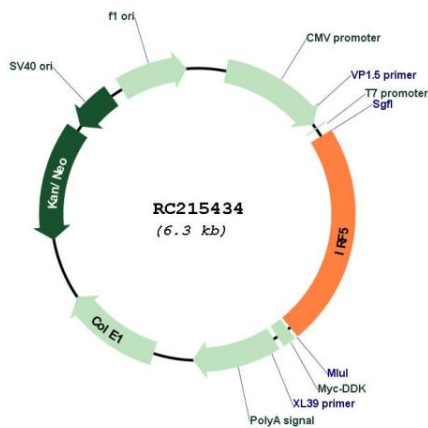
**UniProt ID:** [Q13568](#)

**Cytogenetics:** 7q32.1

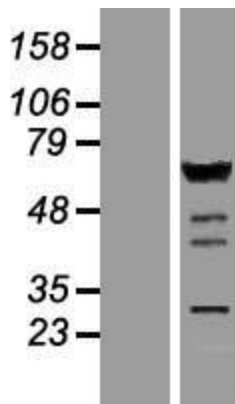
**Protein Families:** Transcription Factors  
**Protein Pathways:** Toll-like receptor signaling pathway  
**MW:** 55.9 kDa

**Gene Summary:** This gene encodes a member of the interferon regulatory factor (IRF) family, a group of transcription factors with diverse roles, including virus-mediated activation of interferon, and modulation of cell growth, differentiation, apoptosis, and immune system activity. Members of the IRF family are characterized by a conserved N-terminal DNA-binding domain containing tryptophan (W) repeats. Alternative promoter use and alternative splicing result in multiple transcript variants, and a 30-nt indel polymorphism (SNP rs60344245) can result in loss of a 10-aa segment. [provided by RefSeq, Dec 2016]

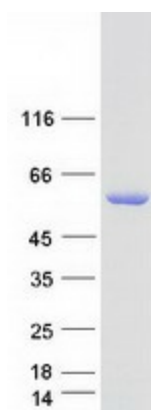
**Product images:**



Circular map for RC215434



Western blot validation of overexpression lysate (Cat# [LY420651]) using anti-DDK antibody (Cat# [TA50011-100]). Left: Cell lysates from untransfected HEK293T cells; Right: Cell lysates from HEK293T cells transfected with [RC216505] using transfection reagent MegaTran 2.0 (Cat# [TT210002]).



Coomassie blue staining of purified IRF5 protein (Cat# [TP315434]). The protein was produced from HEK293T cells transfected with IRF5 cDNA clone (Cat# RC215434) using MegaTran 2.0 (Cat# [TT210002]).