

Product datasheet for **RC215430**

B3GALT5 (NM_006057) Human Tagged ORF Clone

Product data:

Product Type:	Expression Plasmids
Product Name:	B3GALT5 (NM_006057) Human Tagged ORF Clone
Tag:	Myc-DDK
Symbol:	B3GALT5
Synonyms:	3-GalTase 5; B3GalT-V; B3GalTx; B3T5; beta-1; beta-3-Gx-T5; beta3Gal-T5; GLCT5
Mammalian Cell Selection:	Neomycin
Vector:	pCMV6-Entry (PS100001)
E. coli Selection:	Kanamycin (25 ug/mL)
ORF Nucleotide Sequence:	>RC215430 ORF sequence Red=Cloning site Blue=ORF Green=Tags(s)

TTTTGTAATACGACTCACTATAGGGCGGCCGGAATTCGTCGACTGGATCCGGTACCGAGGAGATCTGCC
GCC**CGATCGCC**

ATGGCTTCCCGAAGATGAGATTGATGTATATTTGCCTTCTGGTTCTGGGGGCTCTTTGTTTGTATTTTA
GCATGTACAGTCTAAATCCTTTCAAAGAACAGTCCTTTGTTTACAAGAAAGACGGGAACCTCCTTAAGCT
CCCAGATACAGACTGCAGGCAGACACCTCCCTTCCTCGTCCTGCTGGTGACCTCATCCACAAACAGTTG
GCTGAGCGCATGGCCATCCGGCAGACGTGGGGAAAGAGAGGACGGTGAAGGGAAAGCAGCTGAAGACAT
TCTTCTCCTGGGGACCACCAGCAGTGCAGCGGAAACAAAAGAGGTGGACCAGGAGGCCAGCGACACGG
GGACATTATCCAGAAGGATTTCCCTAGACGTCTATTACAATCTGACCCTGAAGACCATGATGGGCATAGAA
TGGGTCCATCGCTTTTGTCTCAGGCGGCGTTTGTGATGAAAACAGACTCAGACATGTTCAATGTTG
ACTATCTGACTGAACTGCTTCTGAAGAAAAACAGAAACACCAGGTTTTTCACTGGCTTCTTGAACTCAA
TGAGTTTCCCATCAGGCAGCCATTCAGCAAGTGGTTTGTGAGTAAATCTGAATATCCGTGGGACAGGTAC
CCACCATCTGCTCCGGCACCGGCTACGTGTTTCTGGCGACGTGGCGAGTCAGGTGTACAATGTCTCCA
AGAGCGTCCCATACATTAACCTGGAAGACGTGTTTGTGGGGCTCTGCCTCGAAAGGCTGAACATCAGATT
GGAGGAGCTCCACTCCCAGCCGACCTTTTTCCAGGGGGCTTACGCTTCTCCGTATGCCCTTTCAGGAGG
ATCGTGGCCTGCCACTTCATCAAGCCTCGGACTCTTTGGACTACTGGCAGGCTCTAGAGAATCCCGGG
GGGAAGATTGTCCGCTGTC

ACGCGTACGCGGCCGCTCGAGCAGAAACTCATCTCAGAAGAGGATCTGGCAGCAAATGATATCCTGGATT
ACAAGGATGACGACGATAAGGTTTAA



[View online »](#)

Protein Sequence: >RC215430 protein sequence
Red=Cloning site Green=Tags(s)

MAFPKMRLMYICLLVLGALCLYFSMYSLNPFKEQSFVYKKGDNFLKLPDTCRQTPPFLVLLVTSSHKQL
 AERMAIRQTWGKERTVKGKQLKTFLLGTTSSAAETKEVDQESQRHGDI IQKDFLDVYYNLTLKTMGGIE
 WVHRFCPQAAFVMKTDSDMFINVDYLTELLKKNRTRFFTFGLKLNFFPIRQPFKWFVSKSEYPWDY
 PPFCSGTGYVFSGDVASQVYNVSKSVPIYIKLEDVFGVGLCLERLNIRLEELHSQPTFFPGGLRF SVCLFRR
 IVACHFIKPRTLDDYWQALENSRGEDCPPV

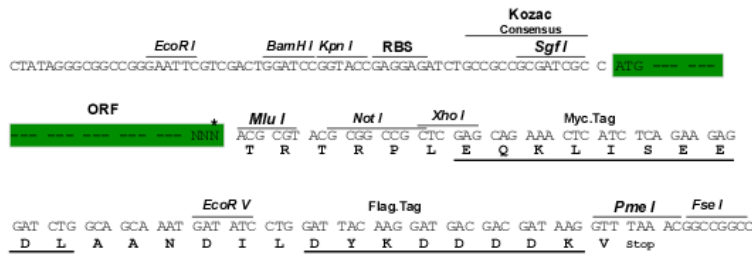
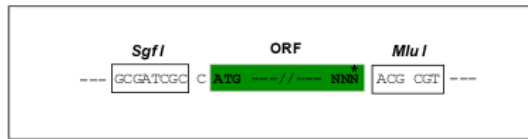
TRTRPLEQKLISEEDLAANDILDYKDDDDKV

Chromatograms: https://cdn.origene.com/chromatograms/mk6372_a01.zip

Restriction Sites: SgfI-MluI

Cloning Scheme:

Cloning sites used for ORF Shuttling:



* The last codon before the Stop codon of the ORF

ACCN: NM_006057

ORF Size: 930 bp

OTI Disclaimer: The molecular sequence of this clone aligns with the gene accession number as a point of reference only. However, individual transcript sequences of the same gene can differ through naturally occurring variations (e.g. polymorphisms), each with its own valid existence. This clone is substantially in agreement with the reference, but a complete review of all prevailing variants is recommended prior to use. [More info](#)

OTI Annotation: This clone was engineered to express the complete ORF with an expression tag. Expression varies depending on the nature of the gene.

Components: The ORF clone is ion-exchange column purified and shipped in a 2D barcoded Matrix tube containing 10ug of transfection-ready, dried plasmid DNA (reconstitute with 100 ul of water).

Reconstitution Method:

1. Centrifuge at 5,000xg for 5min.
2. Carefully open the tube and add 100ul of sterile water to dissolve the DNA.
3. Close the tube and incubate for 10 minutes at room temperature.
4. Briefly vortex the tube and then do a quick spin (less than 5000xg) to concentrate the liquid at the bottom.
5. Store the suspended plasmid at -20°C. The DNA is stable for at least one year from date of shipping when stored at -20°C.

Note: Plasmids are not sterile. For experiments where strict sterility is required, filtration with 0.22um filter is required.

RefSeq: [NM_006057.3](#)

RefSeq Size: 2786 bp

RefSeq ORF: 933 bp

Locus ID: 10317

UniProt ID: [Q9Y2C3](#)

Cytogenetics: 21q22.2

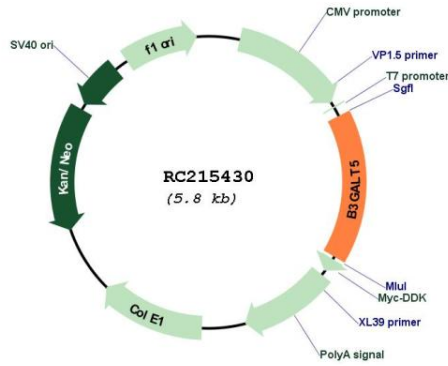
Protein Families: Transmembrane

Protein Pathways: Glycosphingolipid biosynthesis - globo series, Glycosphingolipid biosynthesis - lacto and neolacto series, Metabolic pathways

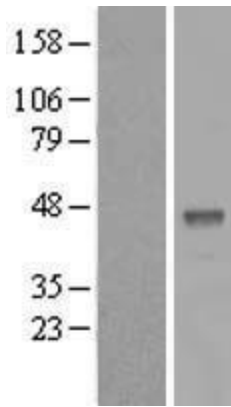
MW: 36.2 kDa

Gene Summary: This gene encodes a member of a family of membrane-bound glycoproteins. The encoded protein may synthesize type 1 Lewis antigens, which are elevated in gastrointestinal and pancreatic cancers. Alternatively spliced transcript variants using multiple alternate promoters have been observed for this gene. [provided by RefSeq, Sep 2017]

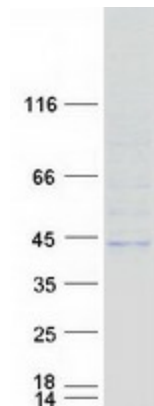
Product images:



Circular map for RC215430



Western blot validation of overexpression lysate (Cat# [LY416890]) using anti-DDK antibody (Cat# [TA50011-100]). Left: Cell lysates from untransfected HEK293T cells; Right: Cell lysates from HEK293T cells transfected with RC215430 using transfection reagent MegaTran 2.0 (Cat# [TT210002]).



Coomassie blue staining of purified B3GALT5 protein (Cat# [TP315430]). The protein was produced from HEK293T cells transfected with B3GALT5 cDNA clone (Cat# RC215430) using MegaTran 2.0 (Cat# [TT210002]).