

Product datasheet for RC215428

SLC24A1 (NM_004727) Human Tagged ORF Clone

Product data:

Product Type:	Expression Plasmids
Product Name:	SLC24A1 (NM_004727) Human Tagged ORF Clone
Tag:	Myc-DDK
Symbol:	SLC24A1
Synonyms:	CSNB1D; HsT17412; NCKX; NCKX1; RODX
Mammalian Cell Selection:	Neomycin
Vector:	pCMV6-Entry (PS100001)
E. coli Selection:	Kanamycin (25 ug/mL)
ORF Nucleotide Sequence:	>RC215428 representing NM_004727 Red=Cloning site Blue=ORF Green=Tags(s)

TTTTGTAATACGACTCACTATAGGGCGGCCGGAATTCGTCGACTGGATCCGGTACCGAGGAGATCTGCC
GCC**CGATCGCC**

ATGGGGAAATTGATCAGGATGGGGCCGCAAGAGAGGTGGTTACTCCGGACAAAGCGGTTTCATTGGAGTC
GCCTCCTCTTCTACTGGGAATGTTGATCATCGGTTCTACTTATCAGCACCTTAGGAGACCCCGGGGCT
TTCTCATTGTGGGCAGCAGTCTTCTCATCAGCCTATAAACTGGCCAGTCGGGACCTCTCCAGTGAA
GAGATGATGATGATGAGCAGCAGCCCTTCAAACCTAGCTCCGAAATGGGGGTAAGATGCTGGTACCC
AAGCCTCAGTGGGCAGTGAAGCAACTGAGCATGACAGTGGAGAATATCCCGAGTATGCCTAAAAG
AACAGCCAAGATGATCCCAACAACAACCAAGAATAATTACAGCCCAACAGCAGCAGGTACAGAAAGAAGG
AAGGAAGACCCCAACATCCAGTAGAACACTGACTTACTACACCTCAACTTCAAGCAGACAAAATAGTAA
AAAAGTATACCCCAACACCCAGGGGAGAAATGAAGAGCTACAGCCCAACTCAAGTGGGGAAAAGGTGAA
GTATACTCCTTCCCCACGTGGTGAAGAGTAGGCATTTACGTGCCGTCCACATTCATGACAATGGAAACA
AGCCATGCGATCACCCCAAGGACAACAGTGAAGACAGTGACATTACAGCAACCTATAAAATACTCGAAA
CCAACCTCTTAAAGAGAATAATGGAGGAAACCACCCCAACCACTCTCAAGGGAATGTTTGATAGCACCC
AACTTTTCTGACACATGAGGTAGAAGCAAACGTCTTGACTTCTCAAGGAGCGTCATGGAAAAAACAAC
CTGTTTCCCCCAGAAGAGTGGAAAGTAACAGCTCAGCCATCCCTGGGGTTAGTGGGAAAGAGCAACC
CGAAGACTCCCCAGGGAACAGTCTGTTGCATACCCAGCCACCTCTGAGGGGCAGGTGACAATAAGCAC
CATGACAGGCAGCAGCCAGCAGAAACCAAGCCTTCACTGCTGCCTGGAGTCTTAGGAATCCTTACCC
AGGACCAAGTGTATCAGCCATCAAAACAGCCCAAGCCTAGTCTGGAGGCTGGCAAAGAAACCTTCCACAG
CACCCAGCACCTCAACAACCCCTACGGTCAGGGCAAAGCTGACCATGCAGGTCCATCACTGTGTGGTTGT
GAAGCCAACCCAGCCATGCTCACCCTCCCTCCCAAGCCTCACAACAGCCCTGCTCCAGAGGAGCTC
AGTCTAGTCCCTCAGTGTGCTCCAGCTTCCAGACCTCCACCCCAAGGGAGAGTACCCCCAGATC
TGTTCAAGTGTGGAGGAGCGGCGGAGGGCTGGTGGTCTGCACGTTTTTGGCATGATGTATGTGTTTGT
GGCCTTGGCCATTGTTTGGCAGCAGTACTTCGTTCCAGCCCTGGGTGTCATCACAGACAAGTGCAGATC



[View online >](#)

TCCGAGGATGTGGCAGGCGCCACATTCATGGCTGCTGGAGGCTCTGCTCCTGAGCTCTTACCTCCCTCA
 TCGGTGTCTTCAATTTCCACAGCAACGTGGGCATTGGTACCATTGTGGGCTCTGCTGTGTTCAACATTCT
 CTTTGTCAATTGGCACTTGTTCCTCTTCTCCCGAGAGATCCTCAACCTCACCTGGTGGCCCTTATCCGT
 GATGTCTCCTTACATCCTTGACCTGATAATGCCTCATCTCTTCTTCTGGACAGCCTCATTGCCTGGT
 GGGAGAGCCTGCTGCTGCTGGCCTATGCCTTCTATGTGTTACCATGAAGTGAACAAGCATATCGA
 GGTCTGGTGAAGGAGCAGCTCAGCAGGAGGCCAGTGGCAAGGTCATGGCCTTAGAAGACCTCAGCAAG
 CCGGGCGATGGGGCATTGCGGTGGATGAGCTACAGGATAACAAGAAGCTGAAGCTCCCGTCTTGTCTGA
 CCCGAGGAGCAGCTCGACCTCTCTGCACAACAGCACCATCCGACGACCATCTACCAGCTCATGTCCA
 CAGCCTGGACCCCTGAGGGAAGTTCGCCCTTGCCAAGGAGAAGGAGGAGGAGCTTGAATCAAGGGGCC
 AGAGCCCAACCCAGGCCAAAGCAGAAAGCAAACCAGAAGAGGAGGAGCCAGCCAAGCTCCCTGCGGTCA
 CGGTACACACCAGCCCTGTTCCAGACATCAAGGGAGATCAGAAGGAGAATCCAGGCGGTGAGGAAGATG
 GGCTGAGGCCGAGAGCACAGGTGAAATGCCAGGCGAAGAGGGCGAAACTGCTGGTGAAGGTGAAACTGAA
 GAGAAAAGTGGAGGTGAAACTCAACCAGAAGGTGAAGGTGAAACTGAAACACAAGAAAAGGAGAAGAAT
 GTGAAGATGAAAATGAAGCAGAAGGAAAAGGAGACAATGAAGGTGAAGATGAGGGTAAAATCCACGCAGA
 AGATGGTAAAATGAAAGTAATGAAGGTGAAACTGAAAGCCAGGAACTCAGTGTGAAAATCACGGTGAA
 GCCAAAAATGATGAGAAAAGGTGTAAGAAGTGGAGGGGGAAGTGTGGAGGGGATAGCGAAGAGGAGGAAG
 AGGAGGAGGAAGAGCAGGAGGAAGAGGAGGAGGAGGAAGAGCAGGAGGAAGAGGAGGAGGAGGAGGA
 AGAGGAGGAGAAGGGAAATGAAGAGCCTCTGTCCCTGGACTGGCCTGAAACCAGGCGAGAAGCAGGCCATT
 TACCTCTTCTTCTGCCATCGTGTTCCTACTGTGGTGACAGTCCCGACGTCCGAAGGAGGAGTCTA
 GGAAGTTTTTGTTCACCTTCTGGGATCTATCATGTGGATAGCCATGTTCTCATACCTCATGGTGTG
 GTGGGCTCACCAGTTGGTGAACAATAGGGATTTCTGAAGAGATCATGGCCTGACAATCCTTGCAGCA
 GGCACATCAATCCTGACCTCATCACCAGTGTGATTGTCGCTCGAAAAGGCTGGGAGACATGGCTGTG
 CAAGCTGTGGCAGTAACATATTTGATACACTGTGGGCTTGCTGTCTTCTTGGTTGCTTTTCTCT
 TATCAATGGATTACAGCCAGTTCAGTACAGCAATGGCTTGTGTTTGTGCAATGTTTTGCTTTTTCTC
 ATGCTTCTGTTTGTATCTCTTCAATTGCGTCATGTAATGGAGAATGAACAAGATCCTGGGCTTACAA
 TGTTCTCTTTACTTTGTATTCTGATAATCAGTGTGATGTTAGAAGATCGAATCATATCCTGTCTGT
 ATCTGTC

ACGCGTACGCGGCCGCTCGAGCAGAAACTCATCTCAGAAGAGGATCTGGCAGCAATGATATCCTGGATT
 ACAAGGATGACGACGATAAGGTTTAA

Protein Sequence:

>RC215428 representing NM_004727
 Red=Cloning site Green=Tags(s)

MGKLRMGPQERWLLRTRKRLHWSRLLFLLGMLIIGSTYQHLRRPRGLSSLWAAVSSHQPIKLASRDLSS
 EMMMMSSSPKSPSEMGGKMLVPQASVGSDEATLSMTVENIPSPKRTAKMIPTTTKNNYSPTAAGTERR
 KEDTPTSSRTLTYTSTSSRQIVKKYTPTPRGEMKSYSPTQVREKVKYTPSPRGRRVGTYPSTFMTMET
 SHAITPRTTVKSDITATYKILETNSLKRIMEETPTTLKGMFDSTPTFLTHEVEANVLTSPRSVMEKNN
 LFPPRRVESNSSAHPWGLVGKSNPKTPQGTVLLHTPATSEGQVTISTMTGSSPAETKAFTAASLRNPSP
 RTSVSAIKTAPAIWVRLAKKPSTAPSTSTPTVRAKLTMQVHHCVVVKPTPAMLTPSPSLTALLPEEL
 SPSPSVLPPSLPDLHPKGEYPPDLFSVEERRQGWVVLHVFGMMYVVALAIVCDEYFVPALGVITDKLQI
 SEDVAGATFMAAGGSAPELFTSLIGVFISHSNVIGTIVGSAVFNILFVIGTCSLFSREILNLWWPLFR
 DVSFYILDILMLILFFLDLIAWESLLLLLAYAFYVFTMKWNKHIEVWVKEQLSRPVAKVMALEDLSK
 PGDGAIIVDELQDNKKLKLPSLLTRGSSSTSLHNSTIRSTIYQLMLHSLDPLREVRLAKEKEEESLNQGA
 RAQPQAKAESKPEEEPAKLPVTVTPAPVPDIKGDQKENPGGQEDVAEAEESTGEMPGEGETAGEGETE
 EKSGGETQPEGEGETETQKGEECEDENEAEKGDNEDGEDEGEIHAEDGEMKGNGETESQELSAENHGE
 AKNDEKGVEDGGSDGGDEEEEEEEEEEEEEEEEEEEEEEEEEEEEEEEEEEEEEKGNPEPLSLDWPETRQKAI
 YLFLPLIVFPLWLTVPDVRREQESRKFVFTFLGSIAMIAMFSYLMVWVAHQVGETIGISEEIMGLTILAA
 GTSIPDLITSVIVARKGLGDMVSSSVGSNIFDITVGLPVPWLLFSLINGLQVPVPVSSNGLFCAIVLLFL
 MLLFVISSIASCKWRMNKILGFTMFLLYFVFLIISVMLEDRIISCPVSV

TRTRPLEQKLI SEEDLAANDILDYKDDDDKV

Chromatograms: https://cdn.origene.com/chromatograms/mk8008_b08.zip
 Restriction Sites: SgfI-MluI
 Cloning Scheme:



ACCN: NM_004727

ORF Size: 3297 bp

OTI Disclaimer: The molecular sequence of this clone aligns with the gene accession number as a point of reference only. However, individual transcript sequences of the same gene can differ through naturally occurring variations (e.g. polymorphisms), each with its own valid existence. This clone is substantially in agreement with the reference, but a complete review of all prevailing variants is recommended prior to use. [More info](#)

OTI Annotation: This clone was engineered to express the complete ORF with an expression tag. Expression varies depending on the nature of the gene.

Components: The ORF clone is ion-exchange column purified and shipped in a 2D barcoded Matrix tube containing 10ug of transfection-ready, dried plasmid DNA (reconstitute with 100 ul of water).

- Reconstitution Method:
1. Centrifuge at 5,000xg for 5min.
 2. Carefully open the tube and add 100ul of sterile water to dissolve the DNA.
 3. Close the tube and incubate for 10 minutes at room temperature.
 4. Briefly vortex the tube and then do a quick spin (less than 5000xg) to concentrate the liquid at the bottom.
 5. Store the suspended plasmid at -20°C. The DNA is stable for at least one year from date of shipping when stored at -20°C.

RefSeq: [NM_004727.3](#)

RefSeq Size: 5374 bp

RefSeq ORF: 3300 bp

Locus ID: 9187

UniProt ID: [O60721](#)

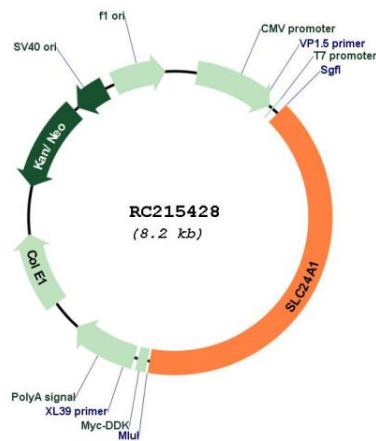
Cytogenetics: 15q22.31

Protein Families: Druggable Genome, Transmembrane

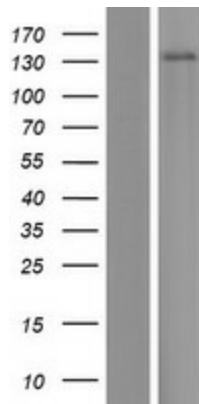
MW: 121.2 kDa

Gene Summary: This gene encodes a member of the potassium-dependent sodium/calcium exchanger protein family. The encoded protein plays an important role in sodium/calcium exchange in retinal rod and cone photoreceptors by mediating the extrusion of one calcium ion and one potassium ion in exchange for four sodium ions. Mutations in this gene may play a role in congenital stationary night blindness. Alternatively spliced transcript variants encoding multiple isoforms have been observed for this gene. [provided by RefSeq, Dec 2011]

Product images:



Circular map for RC215428



Western blot validation of overexpression lysate (Cat# [LY417797]) using anti-DDK antibody (Cat# [TA50011-100]). Left: Cell lysates from untransfected HEK293T cells; Right: Cell lysates from HEK293T cells transfected with RC215428 using transfection reagent MegaTran 2.0 (Cat# [TT210002]).