

Product datasheet for RC215425

NR2E3 (NM_014249) Human Tagged ORF Clone

Product data:

Product Type:	Expression Plasmids
Product Name:	NR2E3 (NM_014249) Human Tagged ORF Clone
Tag:	Myc-DDK
Symbol:	NR2E3
Synonyms:	ESCS; PNR; rd7; RNR; RP37
Vector:	pCMV6-Entry (PS100001)
E. coli Selection:	Kanamycin (25 ug/mL)
Cell Selection:	Neomycin
ORF Nucleotide Sequence:	>RC215425 representing NM_014249 Red=Cloning site Blue=ORF Green=Tags(s)

TTTTGTAATACGACTCACTATAGGGCGGCCGGAATTCGTCGACTGGATCCGGTACCGAGGAGATCTGCC
GCC**GCGATCGCC**

ATGGAGACCAGACCAACAGCTCTGATGAGCTCCACAGTGGCTGCAGCTGCGCCTGCAGCTGGGGCTGCCT
CCAGGAAGGAGTCTCCAGGCAGATGGGGCTGGGGGAGGATCCCACAGGCGTGAGCCCTCGCTCCAGTG
CCGCGTGTGCGGAGACAGCAGCAGCGGGAAGCACTATGGCATCTATGCCTGCAACGGCTGCAGCGGCTTC
TTCAAGAGGAGCGTACGGCGGAGGCTCATCTACAGGTGCCAGGTGGGGGAGGGATGTGCCCCGTGGACA
AGGCCACCGCAACCAAGTCCAGGCCTGCCGGTGAAGAAGTGCCTGCAGCGGGGATGAACCAGGACGC
CGTGCAGAACGAGCGCCAGCCGGAAGCACAGCCAGGTCCACCTGGACAGCATGGAGTCCAACACTGAG
TCCCGGCCGGAGTCCCTGGTGGCTCCCCCGGCCCGGCAGGGCGCAGCCACGGGGCCCCACACCCATGT
CTGCAGCCAGAGCCCTGGGCCACCACTTCATGGCCAGCCTTATAACAGCTGAAACCTGTGCTAAGCTGGA
GCCAGAGGATGCTGATGAGAATATTGATGTCACCAGCAATGACCCTGAGTTCCCTCCTCCTCCATACTCC
TCTTCTCCCCCTGCGGCCTGGACAGCATCCATGAGACCTCGGCTCGCCTACTCTTCATGGCCGTCAAGT
GGGCAAGAACCCTGCCTGTGTTCTCCAGCCTGCCCTCCGGGATCAGGTGATCCTGCTGGAAGAGCGGTG
GAGTGAACCTTTTCTCCTCGGGCCATCCAGTGGTCTCTGCCTCTGGACAGCTGTCTCTGCTGGCACCG
CCCGAGGCCTCTGCTGCCGGTGGTGCCAGGGCCGGCTCACGCTGGCCAGCATGGAGACGCGTGTCTGTC
AGGAAACTATCTCTCGGTTCCGGGCATTGGCGGTGGACCCACGGAGTTTGCCTGCATGAAGGCCTTGGT
CCTCTTCAAGCCAGAGACGCGGGCCTGAAGGATCCTGAGCACGTAGAGGCCTTGCAGGACCAGTCCCAA
GTGATGCTGAGCCAGCACAGCAAGGCCACCACCCAGCCAGCCCGTGGGTTTGGGAAATTGCTCTGTC
TCCTCCGCTCTTTGAGGTTTACTACTGCGGAACGCATCGAGCTCCTCTTTTCCGCAAGACCATAGGGAA
TACTCAAATGGAGAAGCTCCTTTGTGATATGTTCAAAAAC

AG**CGGACCG**ACGCGTACGCGGCCGCTCGAGCAGAACTCATCTCAGAAGAGGATCTGGCAGCAAATGATATCC
TGGATTACAAGGATGACGACGATAAGGTTTAA



[View online »](#)

Protein Sequence: >RC215425 representing NM_014249
Red=Cloning site Green=Tags(s)

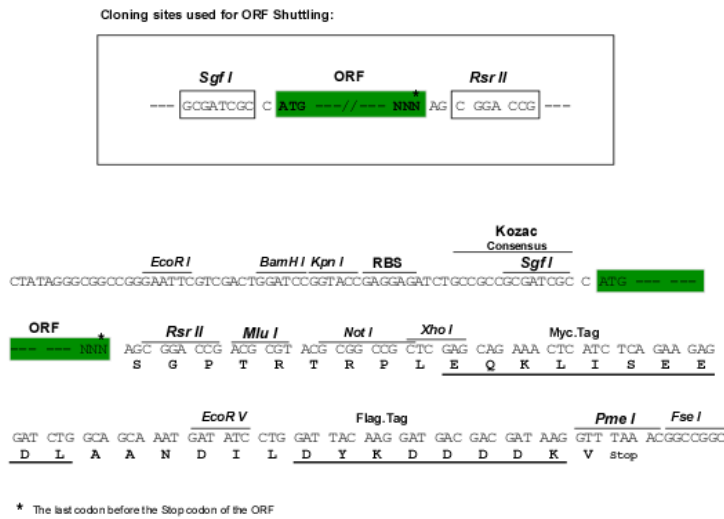
METRPTALMSSTVAAAAPAAGAASRKESPGRWGLGEDPTGVSPSLQCRVCGDSSSGKHYGIYACNGCSGF
 FKRSVRRRLIYRCQVAGMCPVDKAHRNQCQACRLKKCLQAGMNQDAVQNERQPRSTAQVHLDMSMESNTE
 SRPELVAPPAPAGRSRPGPTPMSAARALGHHFMSLITAECAKLEPEDADENIDVTSNDPEFPSSPYS
 SSSPCGLDSIHETSARLLFMVAVKAKNLPVFSSLPFRDQVILLEEAWSELFLGAIQWSLPLDSCPLLAP
 PEASAAGGAQGRLLTASMETRVLQETISRFRALAVDPTFEACMKALVLFKPTRGLKDPEHVEALQDQSQ
 VMLSQHSKAHHPVRFVFGKLLLLLPSLRFITAERIELLFFRKTIGNTPMEKLLCDMFKN

SGPTRTRRLEQKLISEEDLAANDILDYKDDDDKV

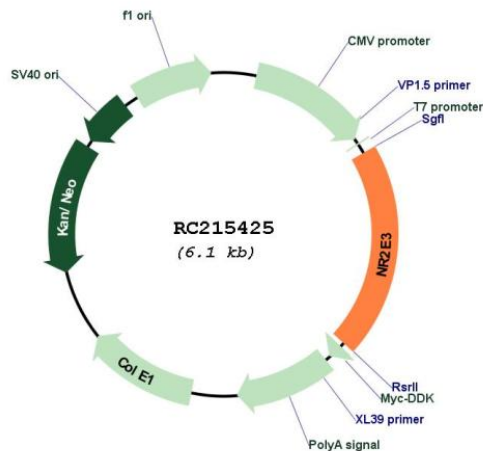
Chromatograms: https://cdn.origene.com/chromatograms/mk6187_b09.zip

Restriction Sites: SgfI-RsrII

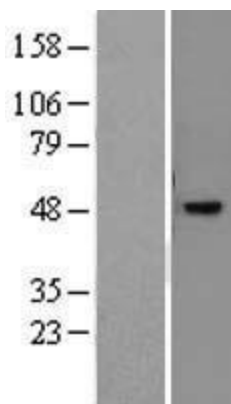
Cloning Scheme:



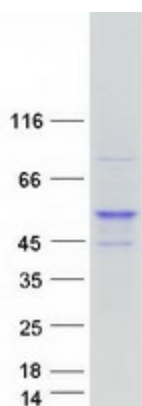
Plasmid Map:



ACCN:	NM_014249
ORF Size:	1230 bp
OTI Disclaimer:	The molecular sequence of this clone aligns with the gene accession number as a point of reference only. However, individual transcript sequences of the same gene can differ through naturally occurring variations (e.g. polymorphisms), each with its own valid existence. This clone is substantially in agreement with the reference, but a complete review of all prevailing variants is recommended prior to use. More info
OTI Annotation:	This clone was engineered to express the complete ORF with an expression tag. Expression varies depending on the nature of the gene.
Components:	The ORF clone is ion-exchange column purified and shipped in a 2D barcoded Matrix tube containing 10ug of transfection-ready, dried plasmid DNA (reconstitute with 100 ul of water).
Reconstitution Method:	<ol style="list-style-type: none">1. Centrifuge at 5,000xg for 5min.2. Carefully open the tube and add 100ul of sterile water to dissolve the DNA.3. Close the tube and incubate for 10 minutes at room temperature.4. Briefly vortex the tube and then do a quick spin (less than 5000xg) to concentrate the liquid at the bottom.5. Store the suspended plasmid at -20°C. The DNA is stable for at least one year from date of shipping when stored at -20°C.
RefSeq:	NM_014249.4
RefSeq Size:	1999 bp
RefSeq ORF:	1233 bp
Locus ID:	10002
UniProt ID:	Q9Y5X4
Cytogenetics:	15q23
Protein Families:	Druggable Genome, Nuclear Hormone Receptor, Transcription Factors
MW:	44.5 kDa
Gene Summary:	This protein is part of a large family of nuclear receptor transcription factors involved in signaling pathways. Nuclear receptors have been shown to regulate pathways involved in embryonic development, as well as in maintenance of proper cell function in adults. Members of this family are characterized by discrete domains that function in DNA and ligand binding. This gene encodes a retinal nuclear receptor that is a ligand-dependent transcription factor. Defects in this gene are a cause of enhanced S cone syndrome. Alternatively spliced transcript variants encoding different isoforms have been identified. [provided by RefSeq, Jul 2008]

Product images:

Western blot validation of overexpression lysate (Cat# [LY402296]) using anti-DDK antibody (Cat# [TA50011-100]). Left: Cell lysates from untransfected HEK293T cells; Right: Cell lysates from HEK293T cells transfected with RC215425 using transfection reagent MegaTran 2.0 (Cat# [TT210002]).



Coomassie blue staining of purified NR2E3 protein (Cat# [TP315425]). The protein was produced from HEK293T cells transfected with NR2E3 cDNA clone (Cat# RC215425) using MegaTran 2.0 (Cat# [TT210002]).